

## Excellent Homeplace with Row Crop Land near Guin



### Property Details:

Price : \$148,500  
County : Marion  
Acreage : 50.00  
Address : Guin AL  
MOPLS ID : 44353

### Location :



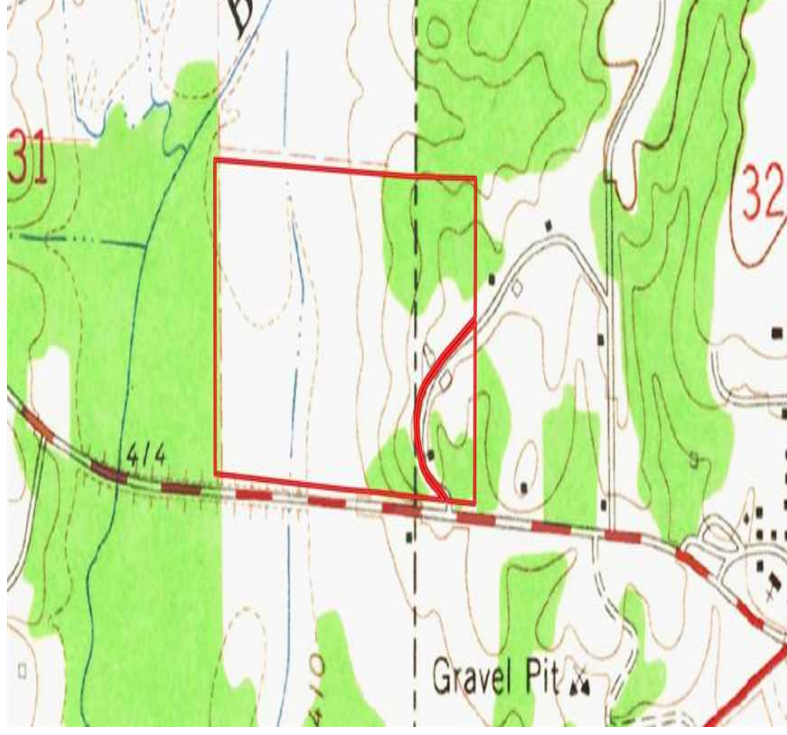
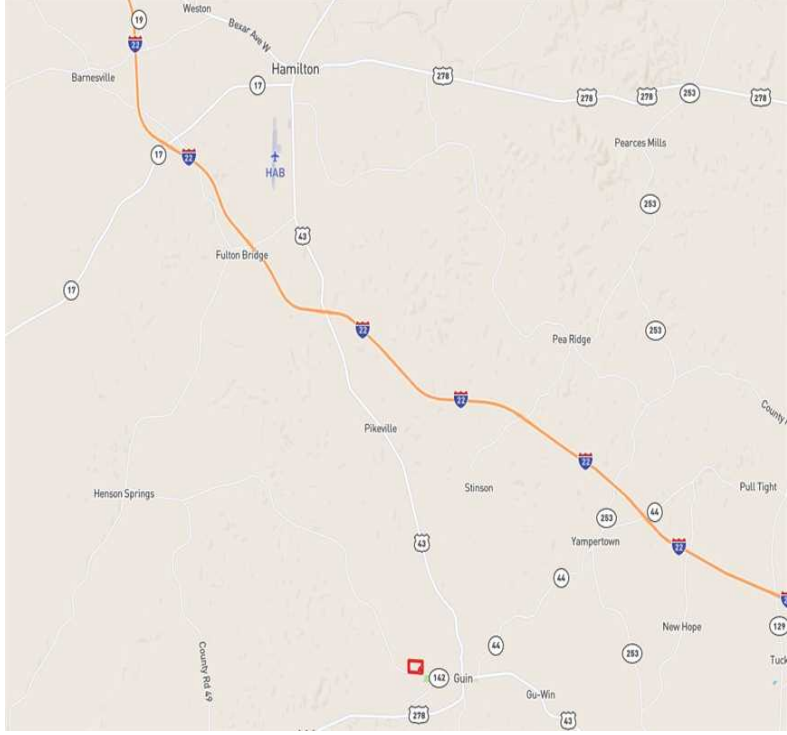
Located 1 mile west of Guin, Alabama on County Road 16, the property comprises 28± acres of row cropland, 17.5± acres of pasture, 4± acres of wet ground, and a 0.5± acre pond. New owners will want to consider building a home place and watching picturesque sunrises and sunsets over the pond. Utilities are available. Asking \$148,500 / \$2,970 per acre For more information or to schedule an appointment to view the property, call Nathan McCollum at (256) 345-0074 or email [nmccollum@mossyoakproperties.com](mailto:nmccollum@mossyoakproperties.com).



Scan the code above with your mobile device or click it to go directly to the Mossy Oak Properties website for Excellent Homeplace with Row Crop Land near Guin

50.00 Acres  
Marion County  
GPS 33.9657 X -87.9147

Mossy Oak Properties Southeast Land & Wildlife  
[www.selandandwildlife.com](http://www.selandandwildlife.com)



50.00 Acres  
Marion County  
GPS 33.9657 X -87.9147

Mossy Oak Properties Southeast Land & Wildlife  
[www.selandandwildlife.com](http://www.selandandwildlife.com)



50.00 Acres  
Marion County  
GPS 33.9657 X -87.9147

Mossy Oak Properties Southeast Land & Wildlife  
[www.selandandwildlife.com](http://www.selandandwildlife.com)