

155 Acres Overlooking Country Side Near Huntsville



Property Details:

Price : \$524,000

County : Madison

Acreage : 155.00

Address :

MOPLS ID : 38420

This beautiful homesite/farm overlooking the countryside is located at the end of a quiet country road. There is a good internal road system through the pasture and woodlots. Approximately 103 acres is in hardwood timber and 52 acres of open land. A small branch bisects the eastern property line. Less than 20 minutes to Huntsville, this property located in an upscale area is perfect for farm living and working in town. Deer, turkey and other wildlife are plentiful! This tract can be combined with an additional 51.80-acre tract located across the road (see MOP#38418).

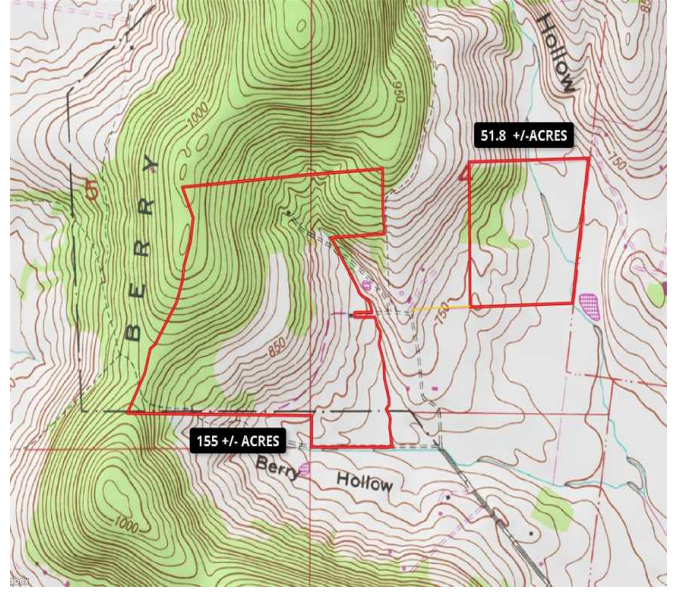
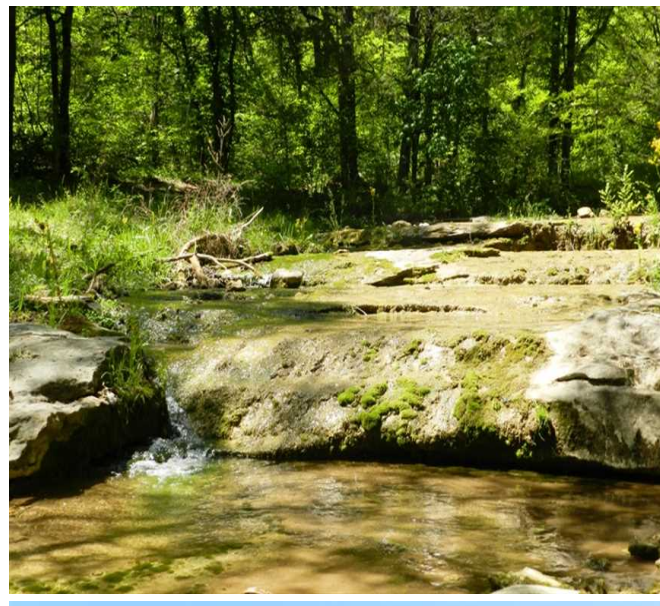
Asking \$524,000/ \$3,381 per acre

Purchase the additional 51.8 (MOP#38418) for \$199,000

For more information or to schedule an appointment to view the property, call Nathan McCollum at (256) 345-0074 or e-mail nmccollum@mossyoakproperties.com. We look forward to speaking with you.

155.00 Acres
Madison County
GPS 34.8031 X -86.4275

Mossy Oak Properties Southeast Land & Wildlife
www.selandandwildlife.com



155.00 Acres
 Madison County
 GPS 34.8031 X -86.4275

Mossy Oak Properties Southeast Land & Wildlife
www.selandandwildlife.com



155.00 Acres
Madison County
GPS 34.8031 X -86.4275

Mossy Oak Properties Southeast Land & Wildlife
www.selandandwildlife.com