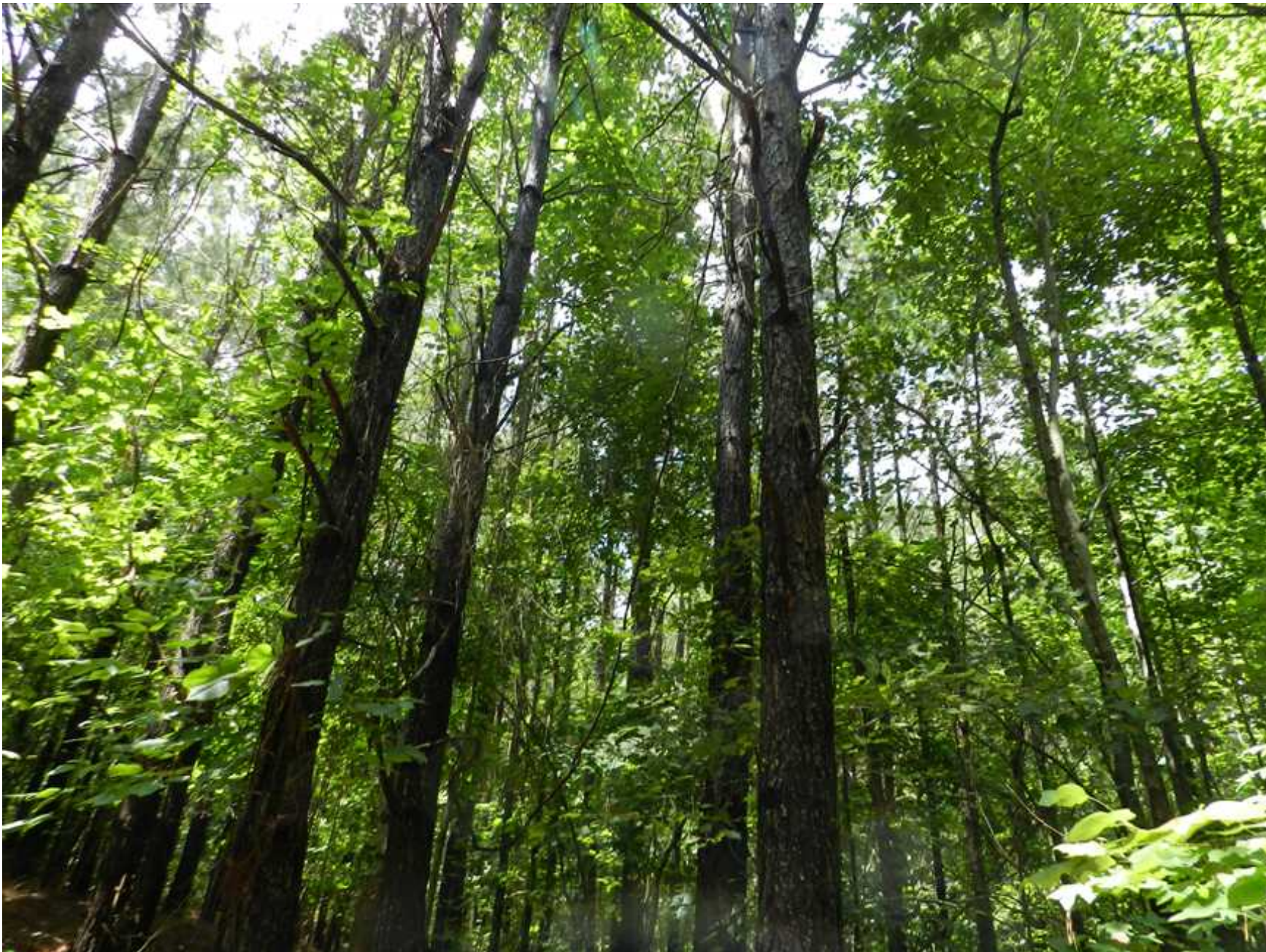


163 Acres Near Natchez Trace Parkway, Tishomingo County



Property Details:

Price : \$175,000

County : Tishomingo

Acreage : 163.64

Address : Tishomingo, MS

MOPLS ID : 40248

163 Acres Near Natchez Trace Parkway, Tishomingo County

ID: 7763

Tishomingo County, MS

163.64 Acres

Asking \$239,000 (\$1,460 per acre)

Secluded, yet only minutes away from a number of small rural towns and the big cities of Booneville, Corinth, or Tupelo. This tract offers world-class hunting for deer and turkeys in addition to beautiful pine and the serene McDougal Creek. Not to mention, the enjoyment of the nostalgic Natchez Trace Parkway and Bay Springs Lake. This is a great tract of timber with phenomenal recreational opportunities as well.

Summary

125.67 acres of loblolly pine

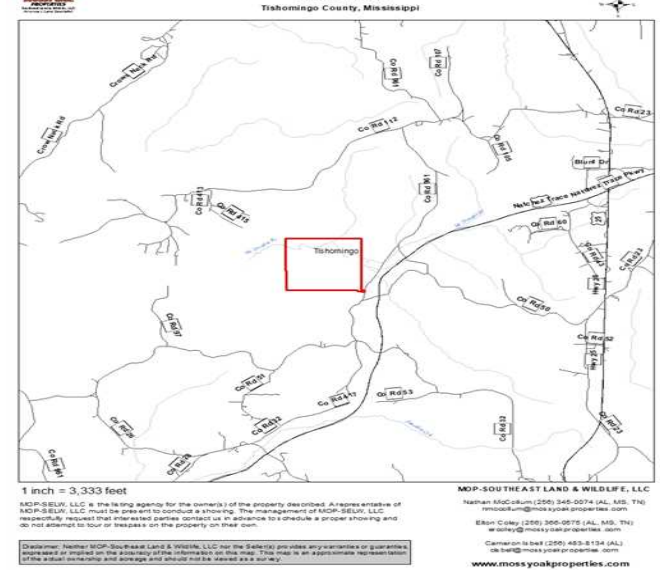
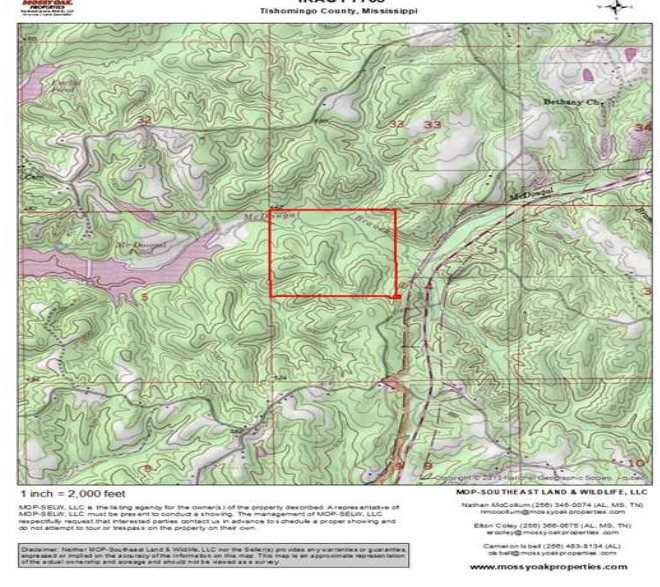
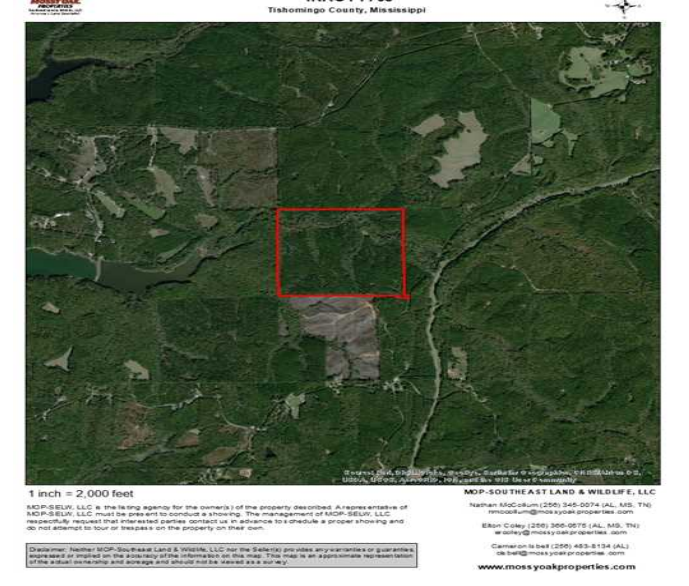
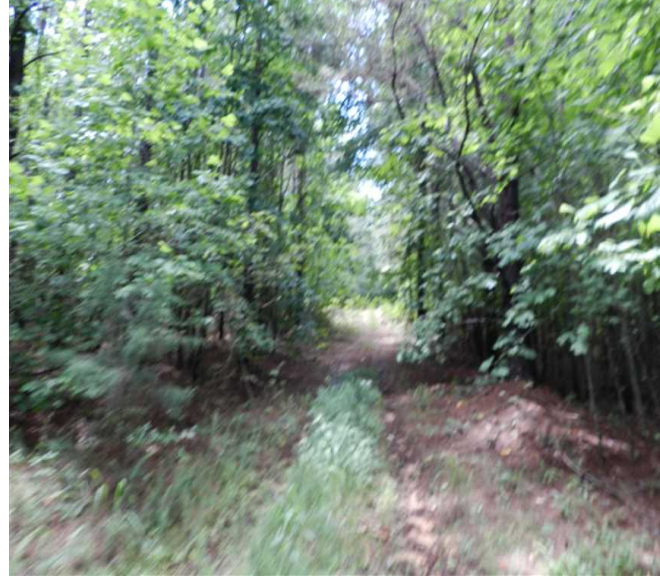
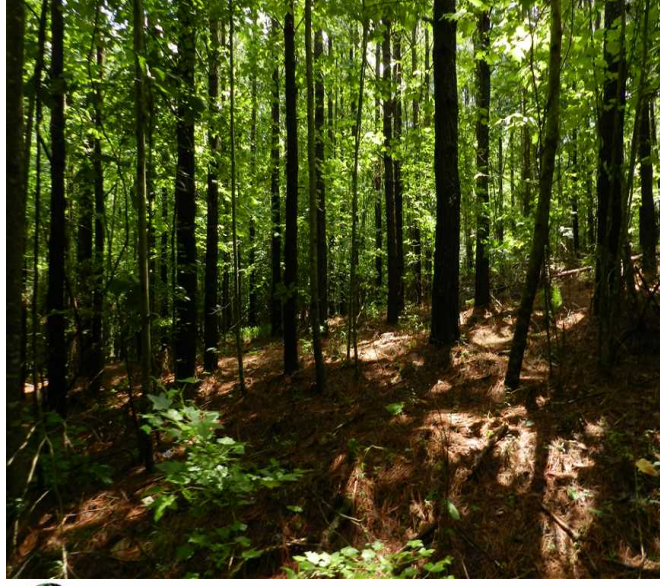
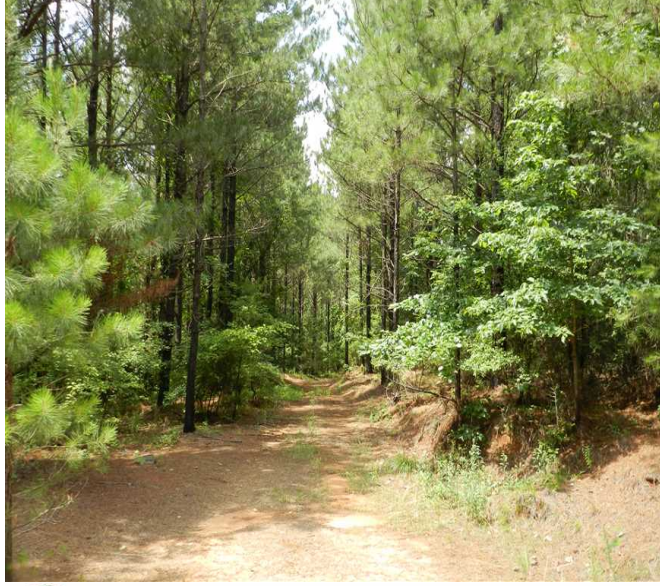
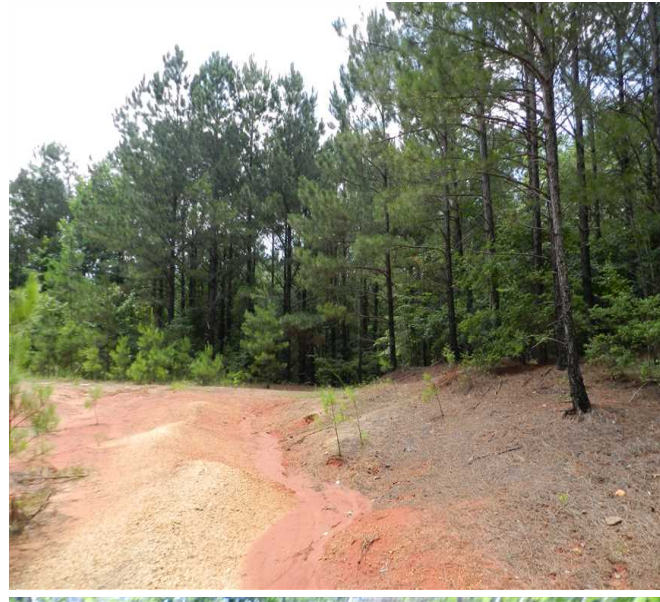
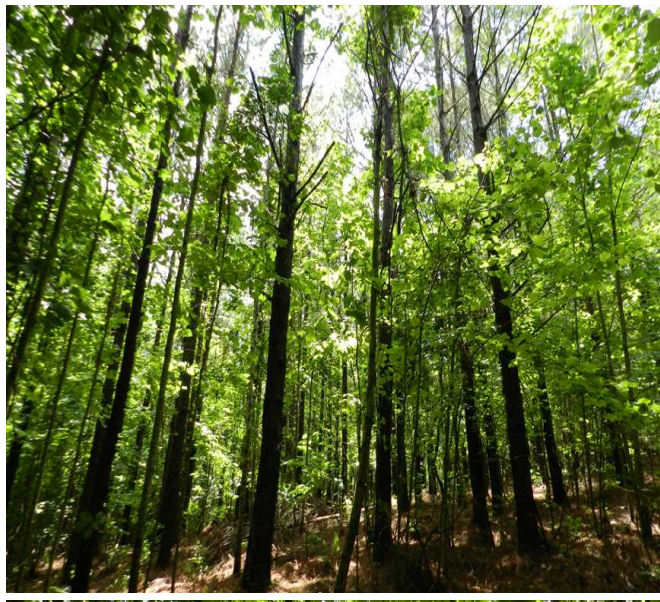
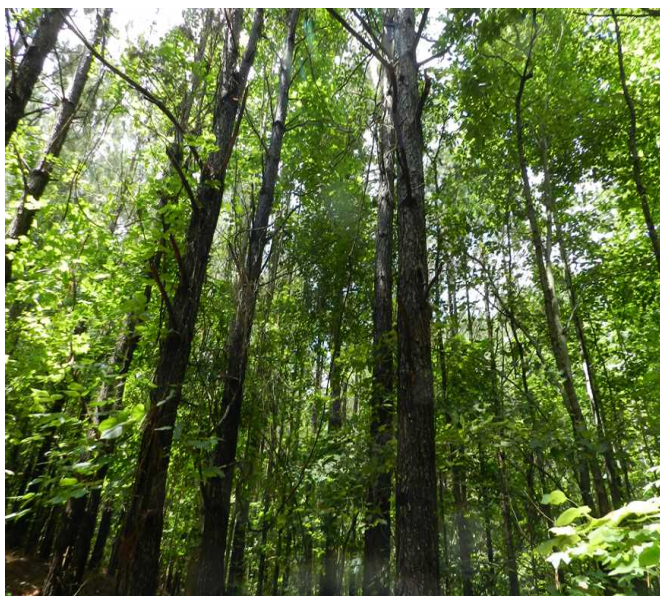
35.86 acres of hardwood

Remaining acreage in roads, fields, and utility right-of-ways

For more information or to schedule an appointment to view the property, call Nathan McCollum at (256) 345-0074 or email nmccollum@mossyoakproperties.com. We also have other tracts that are not yet on-line that might fit what you are looking for. Give us a call and well help you find something that meets your needs!

163.64 Acres
Tishomingo County
GPS 34.5886 X -88.2520

Mossy Oak Properties Southeast Land & Wildlife
www.selandandwildlife.com



163.64 Acres
 Tishomingo County
 GPS 34.5886 X -88.2520

Mossy Oak Properties Southeast Land & Wildlife
www.selandandwildlife.com



163.64 Acres
Tishomingo County
GPS 34.5886 X -88.2520

Mossy Oak Properties Southeast Land & Wildlife
www.selandandwildlife.com