

## SOLD!! 373 Acre Farm With Development Opportunity



**Property Details:**

Price : \$5,580,000

County : Colbert

Acreage : 373.52

Address : Gargis Lane

MOPLS ID : 19297

Here is a rare and unique opportunity to own a 373 acre farm that has all the attractions of income producing row crop and offers residential and commercial development potential. Located just minutes from Muscle Shoals, AL and less than a mile off Hwy 157/20 this is a rare find for the Shoals area.

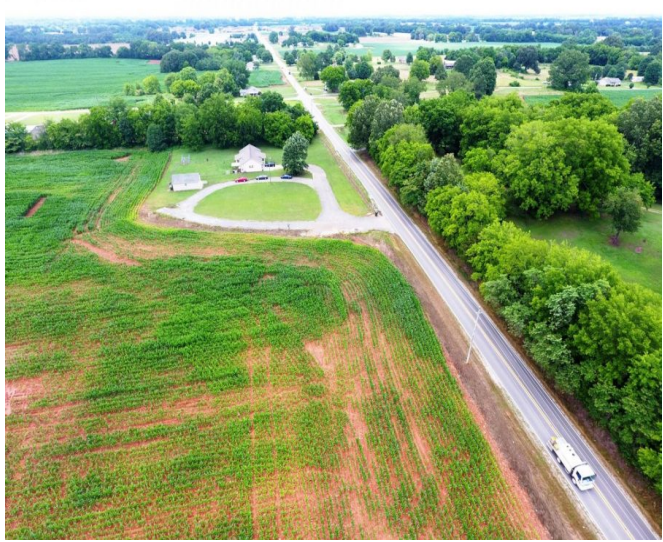
Whether you are looking for a proven agricultural farm or an opportunity for development this farm offers great income potential!

Call/Text Cameron Isbell at 256-483-8134 for a private showing.

373.52 Acres  
Colbert County  
GPS 34.6789328 X -87.6168758

Mossy Oak Properties Southeast Land & Wildlife  
[www.selandandwildlife.com](http://www.selandandwildlife.com)





373.52 Acres  
Colbert County  
GPS 34.6789328 X -87.6168758

Mossy Oak Properties Southeast Land & Wildlife  
[www.selandandwildlife.com](http://www.selandandwildlife.com)





373.52 Acres  
Colbert County  
GPS 34.6789328 X -87.6168758

Mossy Oak Properties Southeast Land & Wildlife  
[www.selandandwildlife.com](http://www.selandandwildlife.com)