

40 +/- acres of Hunting Land in Lawrence County, Alabama



Property Details:

Price : \$199,900

County : Lawrence

Acreage : 40.00

Address : Moulton, AL

MOPLS ID : 56708

This is a unique opportunity to own a recreational tract of real estate nestled inside the Bankhead National Forest. This tract consists of 40 +/- acres of mature hardwoods and two food plots. Wildlife is abundant on this property and the surrounding national forest, making this a great recreational tract. Brushy Creek is also an easy 200 yard hike. The opportunity for first class recreational experiences are endless on this tract.

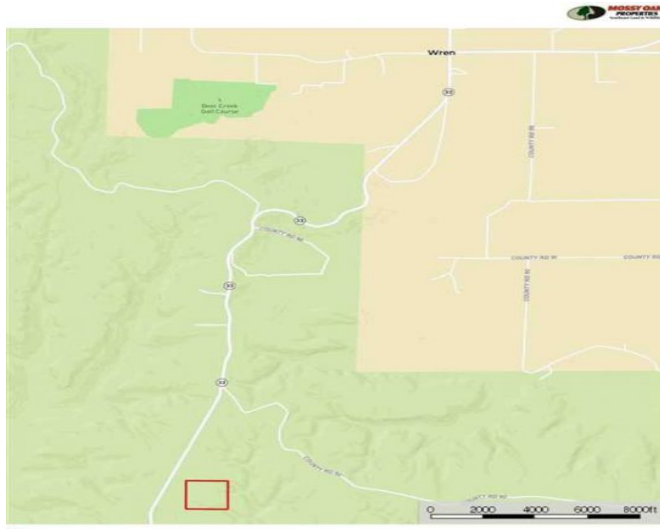
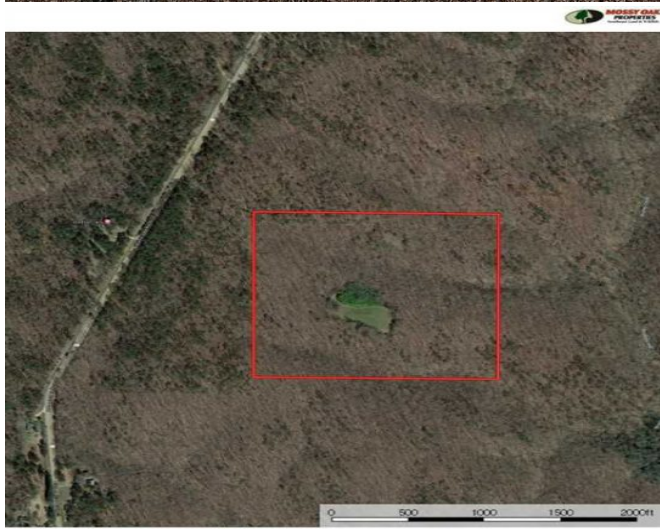
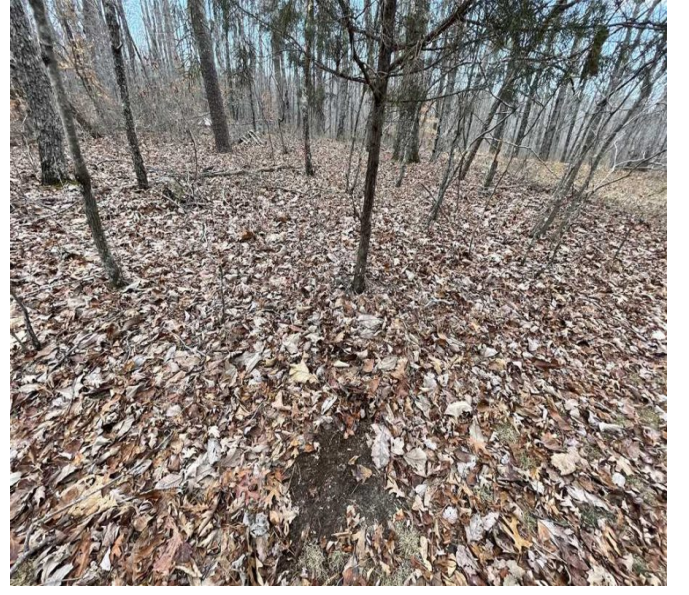
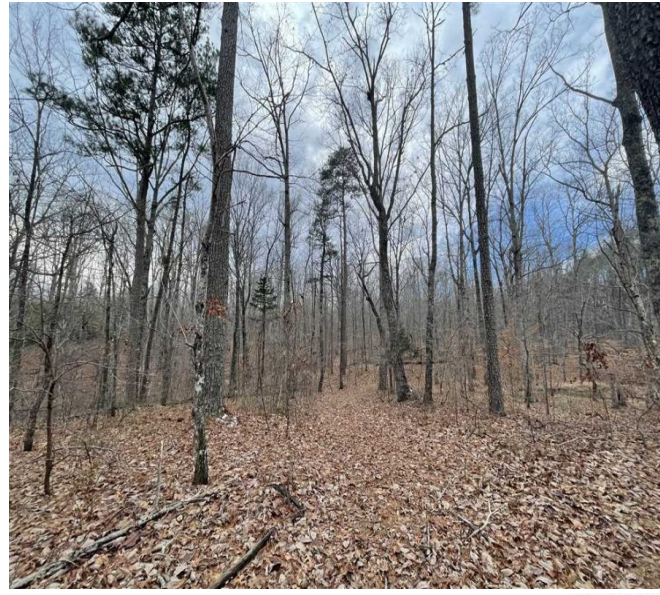
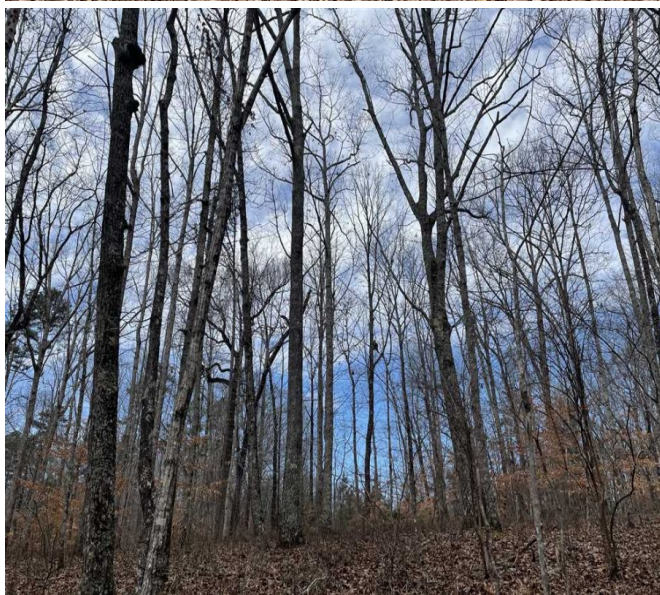
The tract sits less than two hundred yards off of Highway 33 and is easy to access. Conveniently located 10 miles south of Moulton, 30 miles from Decatur, 40 miles from Cullman and 55 miles from Huntsville, day trips will be made with ease.

If you are looking for an off-the-grid recreational retreat, with quality deer and turkey, you do not want to miss this opportunity! Call Jim Greene at 256-227-4869 or email jgreene@mossyoakproperties.com.

Contact Mossy Oak Properties Southeast Land & Wildlife LLC to view this terrific property with exceptional recreation and hunting opportunities. Our team has a unique team of professionals with 70 plus years of combined experience in land brokerage and timber management. We offer a unique perspective in cost effective techniques to market property to prospective buyers. By investing in our clients and their properties, we are not just selling property we are building lifelong friendships. Let us help you "Find Your Favorite Place."

40.00 Acres
Lawrence County
GPS 34.3782 X -87.3187

Mossy Oak Properties Southeast Land & Wildlife
www.selandandwildlife.com



40.00 Acres
Lawrence County
GPS 34.3782 X -87.3187

Mossy Oak Properties Southeast Land & Wildlife
www.selandandwildlife.com



40.00 Acres
Lawrence County
GPS 34.3782 X -87.3187

Mossy Oak Properties Southeast Land & Wildlife
www.selandandwildlife.com