

**SOLD!! 45 ACRES FOR DEVELOPMENT FOR SALE  
IN LAWRENCE CO., AL**



**Property Details:**

Price : \$157,500

County : Lawrence

Acreage : 45.00

Address : Moulton Danville Road

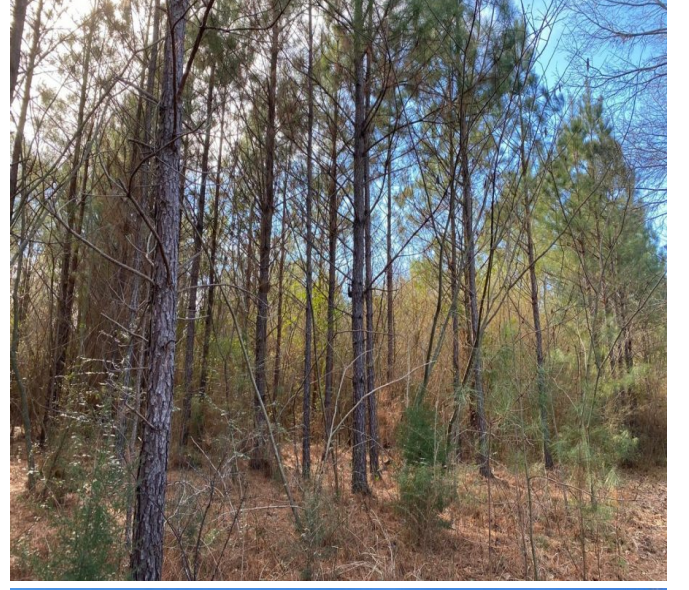
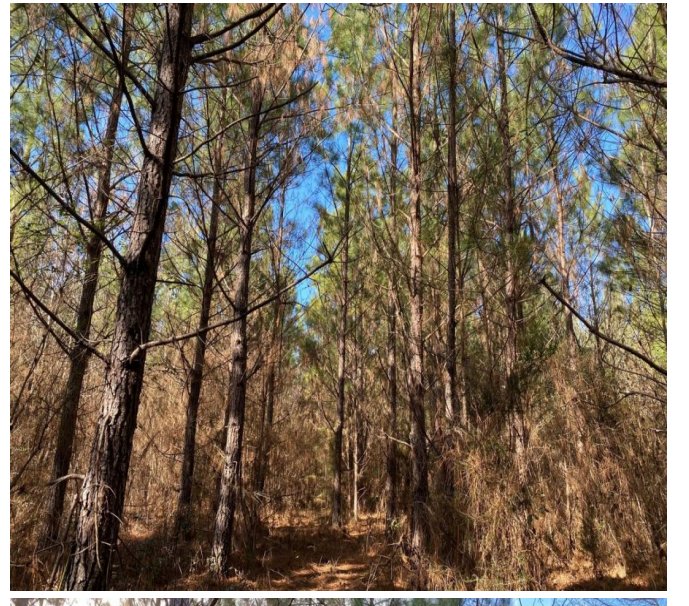
MOPLS ID : 26719

Downing Subdivision 45 acres with great access from Old Moulton-Danville Road (Co Rd 180). This property was a planned subdivision that has yet to be developed. Currently, the property consists of mixed hardwood and planted 12-15-year-old pine plantation. With possible subdivision access from Byler Road, Moulton-Danville Road, and Rosenwald Street, this property provides a unique investment opportunity. This tract would also serve as a great single-family homesite with plenty of room for hiking and ATV trails all while being centrally located near downtown Moulton. This property has access to power, water, and sewer.

Call or text Austin Littrell at 256-460-1875 for more details or to schedule a private showing.

45.00 Acres  
Lawrence County  
GPS 34.470418 X -87.277523

Mossy Oak Properties Southeast Land & Wildlife  
[www.selandandwildlife.com](http://www.selandandwildlife.com)



45.00 Acres  
Lawrence County  
GPS 34.470418 X -87.277523

Mossy Oak Properties Southeast Land & Wildlife  
[www.selandandwildlife.com](http://www.selandandwildlife.com)



45.00 Acres  
Lawrence County  
GPS 34.470418 X -87.277523

Mossy Oak Properties Southeast Land & Wildlife  
[www.selandandwildlife.com](http://www.selandandwildlife.com)