

## 73 Acres Mature Hardwood and Pine Timber near Florence, Alabama



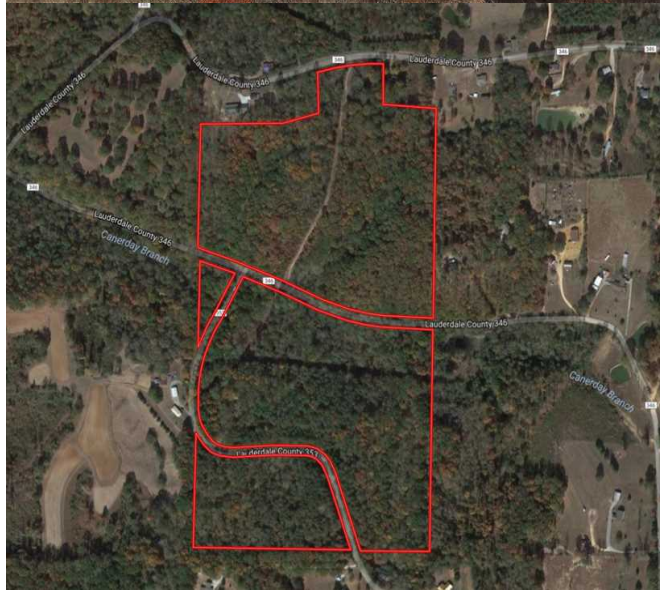
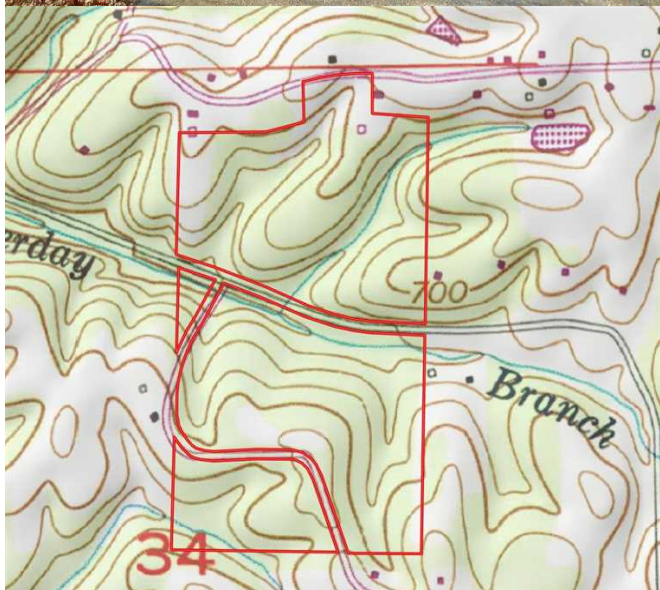
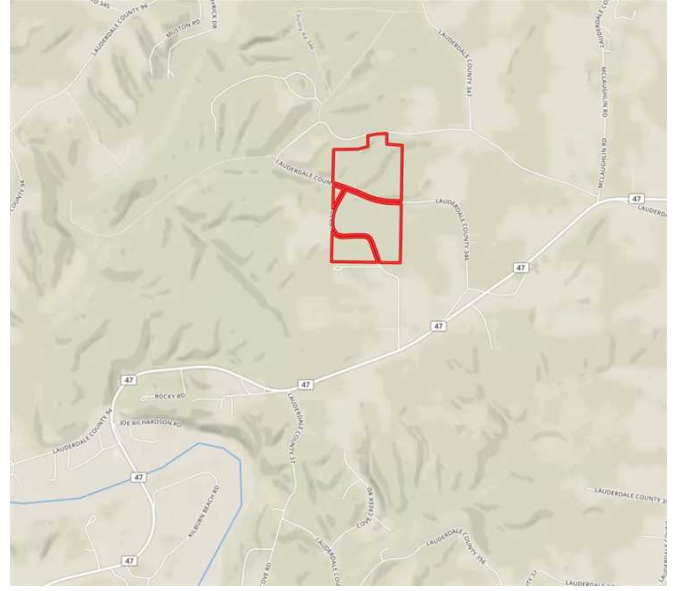
**Property Details:**

Price : \$219,000  
County : Lauderdale  
Acreage : 73.10  
Address :  
MOPLS ID : 34956

Located north of the Happy Hollow area and Shoal Creek, this 73± acres is a must see! Boasting with deer, upland game, and its mature hardwood and pine timber, this property offers an excellent opportunity for wildlife viewing and/or hunting. Located just north of Florence, Alabama in Lauderdale County, this is a perfect place to get away from the hustle and bustle of busy life. Ample road frontage is available along County Roads 353 and 346. Canderday Branch runs through the property. For more information or to schedule an appointment to view the property, call Mark Palmer at (256) 345-0074 or email [mpalmer@mossyoakproperties.com](mailto:mpalmer@mossyoakproperties.com). We look forward to speaking with you.

73.10 Acres  
Lauderdale County  
GPS 34.9280 X -87.5741

Mossy Oak Properties Southeast Land & Wildlife  
[www.selandandwildlife.com](http://www.selandandwildlife.com)



73.10 Acres  
Lauderdale County  
GPS 34.9280 X -87.5741

Mossy Oak Properties Southeast Land & Wildlife  
[www.selandandwildlife.com](http://www.selandandwildlife.com)



73.10 Acres  
Lauderdale County  
GPS 34.9280 X -87.5741

Mossy Oak Properties Southeast Land & Wildlife  
[www.selandandwildlife.com](http://www.selandandwildlife.com)