

## 89 Acres Land For Sale County Road 3501 Prentiss County, Alabama



**Property Details:**

Price : \$108,000  
County : Prentiss  
Acreage : 89.53  
Address : County Road 3501  
MOPLS ID : 50476

Located in Prentiss County, Mississippi, Tract 7712 is 89.53 acres of a good mix of timber types including 14 +/- acres of mature hardwood and 78.43 acres of 3 year old Loblolly pine located less than 1 mile from Bay Springs Lake. This property located near the Bay Springs Marina and the historic Natchez Trace Parkway is a terrific property with potential for recreation and hunting, to use as a weekend getaway, or to build your dream home. Located on County Road 3501 near the New Site Community.

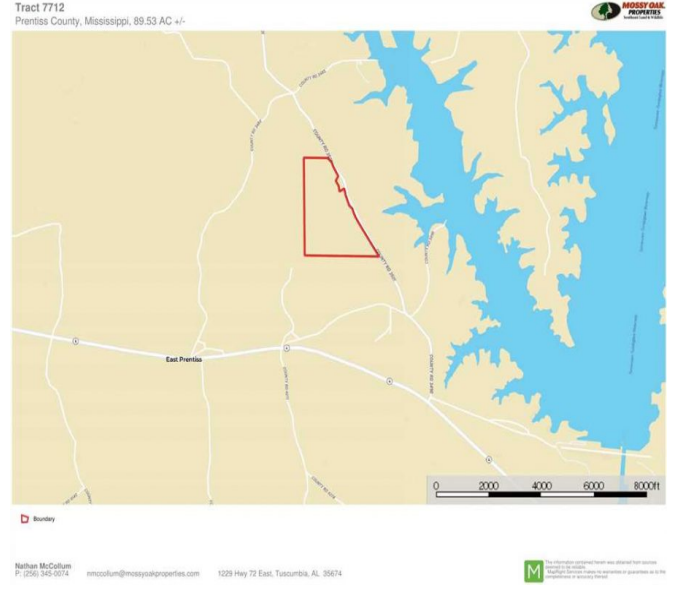
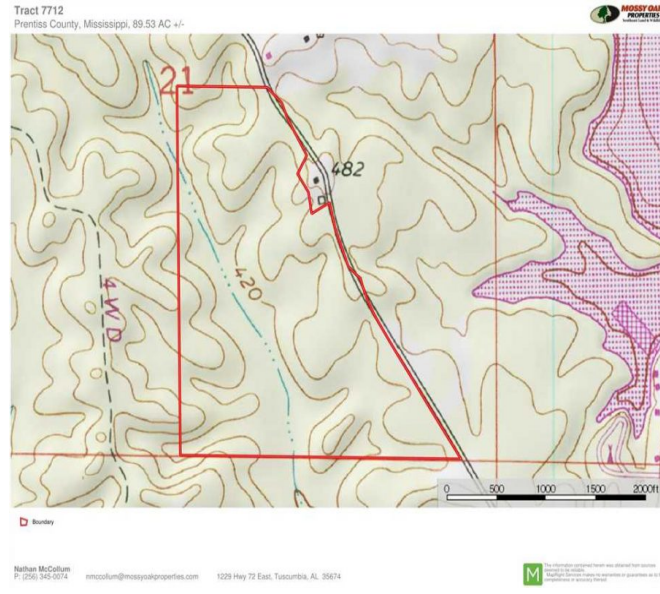
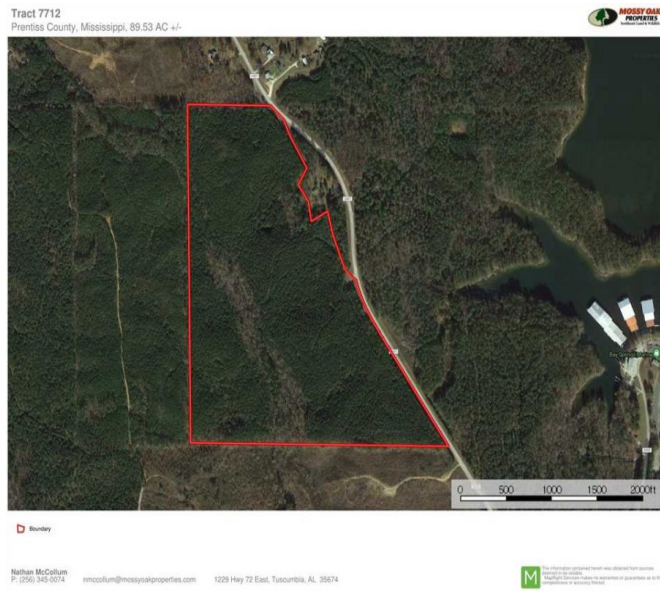
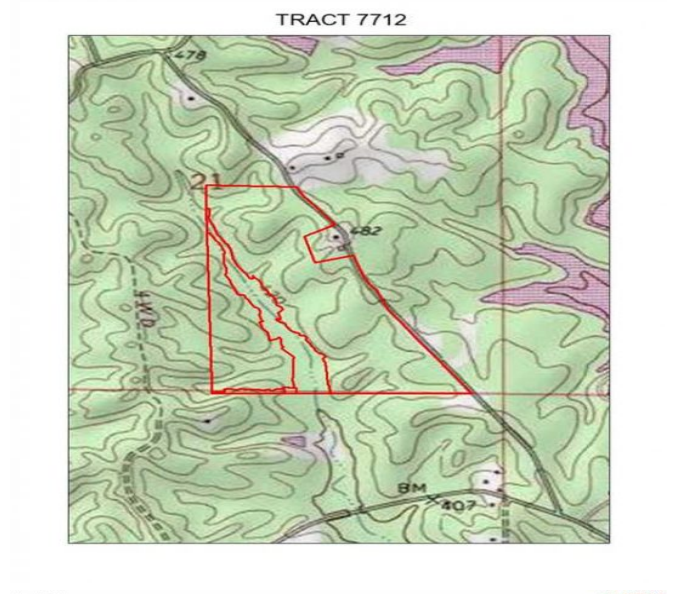
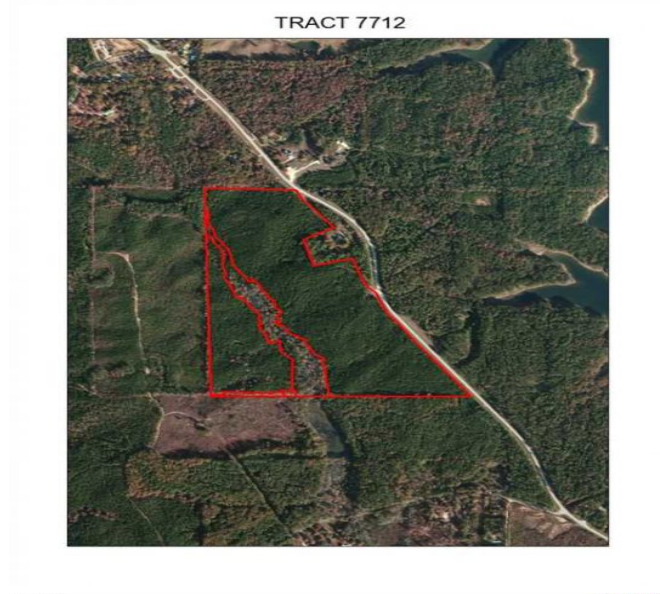
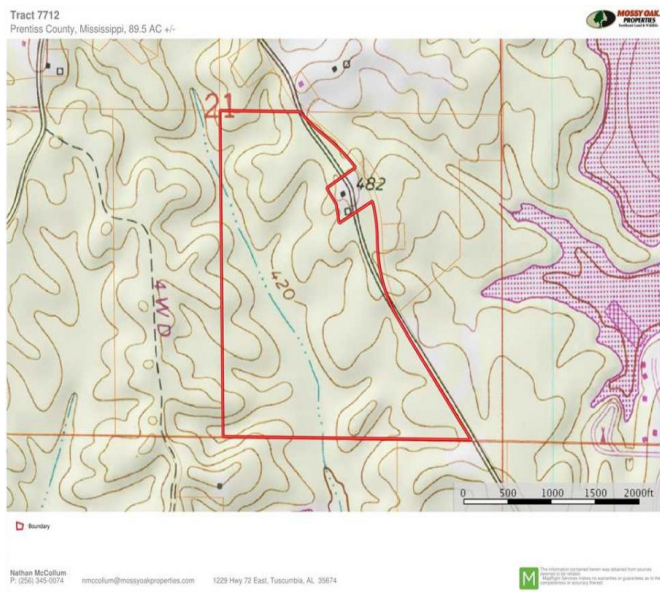
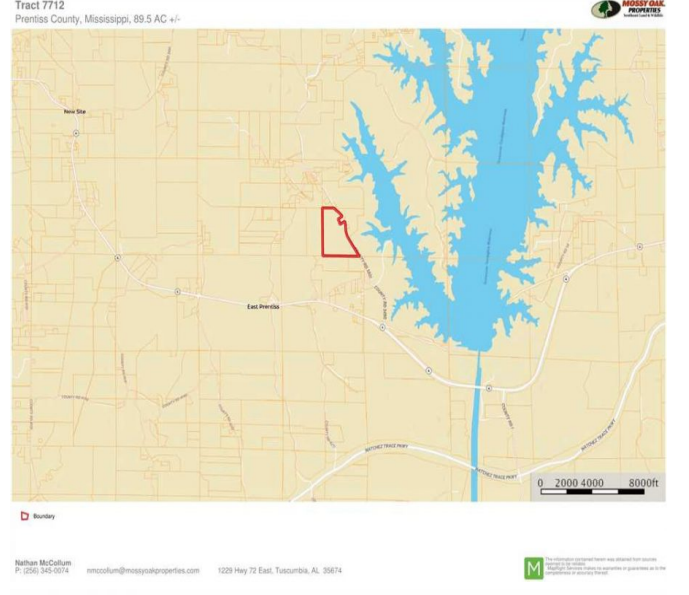
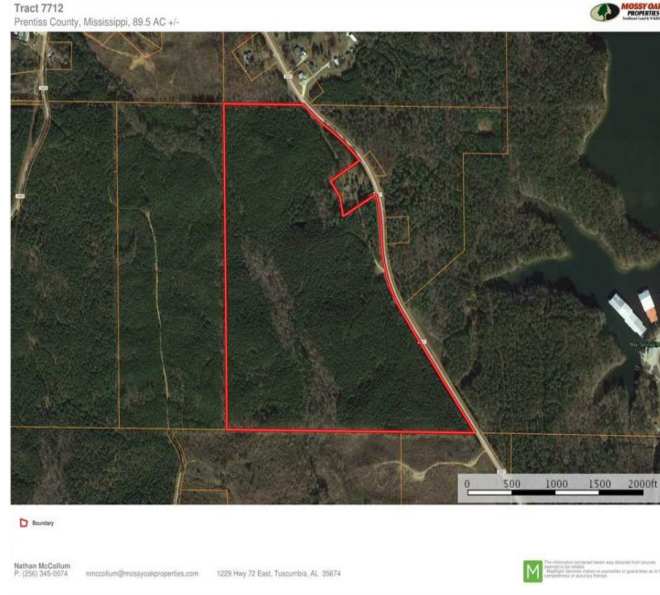
Contact Mossy Oak Properties Southeast Land & Wildlife LLC to view this property with exceptional recreation and hunting opportunities. Our team has a unique team of professionals with 70 years of combined experience in land brokerage and timber management. By investing in our clients and their properties, we are not just selling property we are building lifelong friendships. Let us help you "Find Your Favorite Place."

Serious buyers should contact call Nathan McCollum at (256) 345-0074 or email [nmccollum@mossyoakproperties.com](mailto:nmccollum@mossyoakproperties.com).

89.53 Acres  
Prentiss County  
GPS 34.5650 X -88.3578

Mossy Oak Properties Southeast Land & Wildlife  
[www.selandandwildlife.com](http://www.selandandwildlife.com)





89.53 Acres  
 Prentiss County  
 GPS 34.5650 X -88.3578

Mossy Oak Properties Southeast Land & Wildlife  
[www.selandandwildlife.com](http://www.selandandwildlife.com)





89.53 Acres  
Prentiss County  
GPS 34.5650 X -88.3578

Mossy Oak Properties Southeast Land & Wildlife  
[www.selandandwildlife.com](http://www.selandandwildlife.com)