

## Antebellum home with rural living, close to town



### Property Details:

Price : \$335,000

County : Colbert

Acreage : 21.00

Address :

MOPLS ID : 31606

Located 15 minutes west of the Shoals area, this is the perfect property for the family looking to get out of town but still be close enough for work, shopping, and other everyday necessities. The property's main feature is the 6,400 sq. ft. home built with the traditional antebellum style. The home sits at the base of the famous "Red Rock" with just enough acreage to call home. Overlooking a manicured pond with ducks and geese as well as the surrounding farmland you will have no problem calling this home. Wake up every morning to turkey's gobbling in the hills behind the house and deer grazing in the pastures then head into town (if you want to).

Asking \$335,000 for the home and 16+/- acres

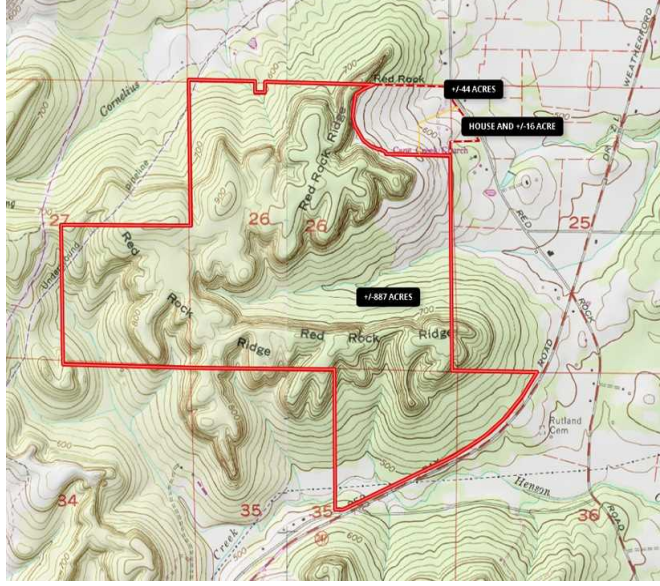
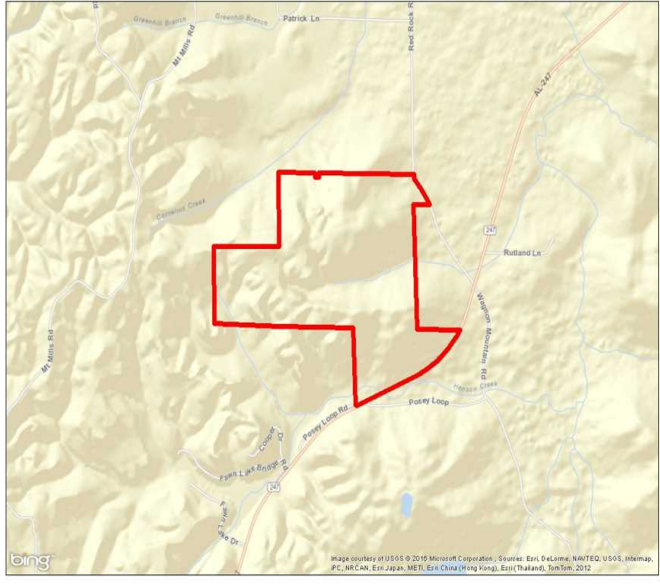
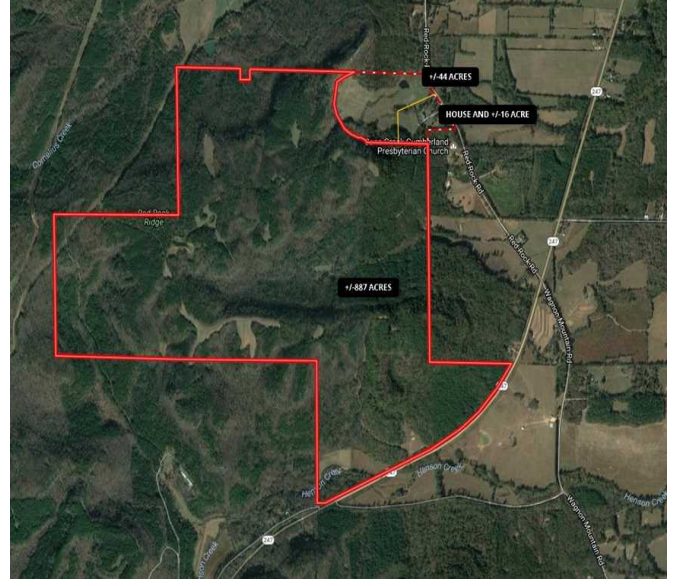
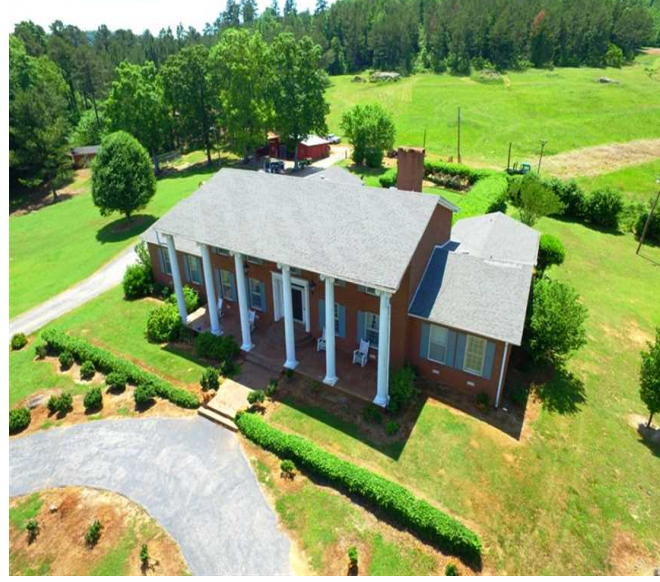
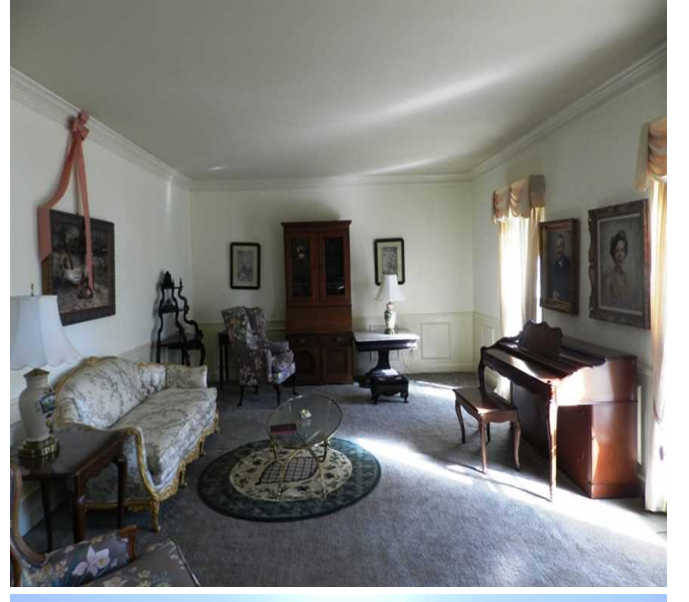
Additional acres available as follows:

44+/- acres pastureland: \$120,200 (\$2,800 per acre)

up to 877+/- acres timberland: \$1,096,250 (\$1,250 per acre)

21.00 Acres  
Colbert County  
GPS 34.6884 X -87.8629

Mossy Oak Properties Southeast Land & Wildlife  
[www.selandandwildlife.com](http://www.selandandwildlife.com)



21.00 Acres  
 Colbert County  
 GPS 34.6884 X -87.8629

Mossy Oak Properties Southeast Land & Wildlife  
[www.selandandwildlife.com](http://www.selandandwildlife.com)



21.00 Acres  
Colbert County  
GPS 34.6884 X -87.8629

Mossy Oak Properties Southeast Land & Wildlife  
[www.selandandwildlife.com](http://www.selandandwildlife.com)