



**Property Details:**

Price : \$461,000

County : Winston

Acreage : 245.97

Address : County Road 4

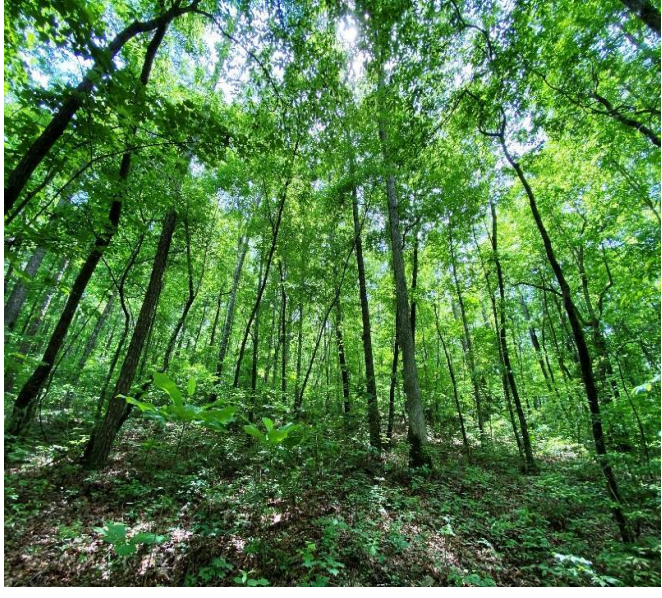
MOPLS ID : 19359

Beautiful tract located 5 miles south of Double Springs, AL. The property is predominantly thinned pine plantation with a hardwood creek bottom that meanders from west to east through the entire tract. County road access with power.

245.97 Acres  
Winston County  
GPS 34.0977 X -87.437

Mossy Oak Properties Southeast Land & Wildlife  
[www.selandandwildlife.com](http://www.selandandwildlife.com)





245.97 Acres  
Winston County  
GPS 34.0977 X -87.437

Mossy Oak Properties Southeast Land & Wildlife  
[www.selandandwildlife.com](http://www.selandandwildlife.com)





245.97 Acres  
Winston County  
GPS 34.0977 X -87.437

Mossy Oak Properties Southeast Land & Wildlife  
[www.selandandwildlife.com](http://www.selandandwildlife.com)