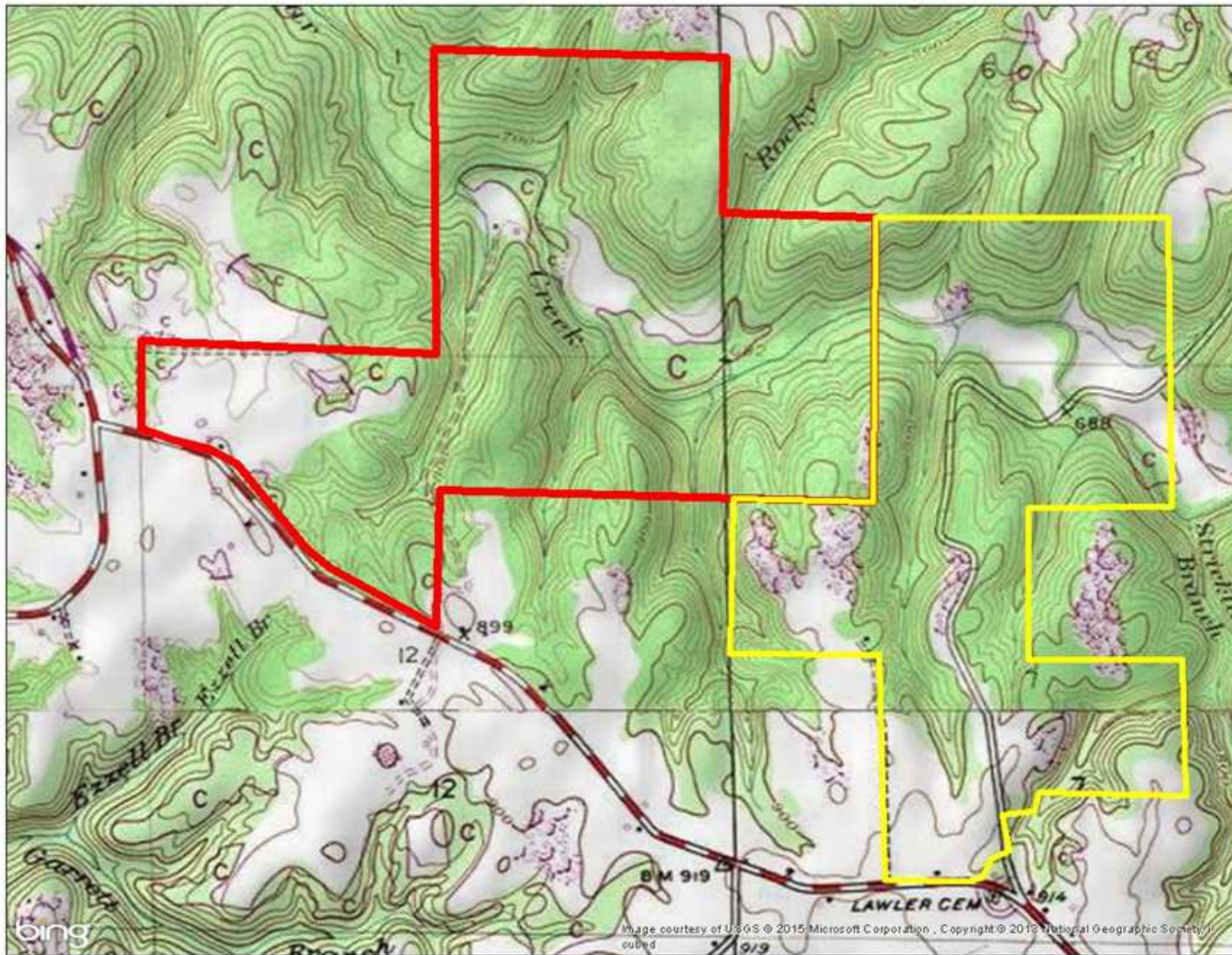


Beautiful Pastureland, Timberland, and Creeks



Property Details:

Price : \$585,000
County : Franklin
Acreage : 335.00
Address :
MOPLS ID : 21929

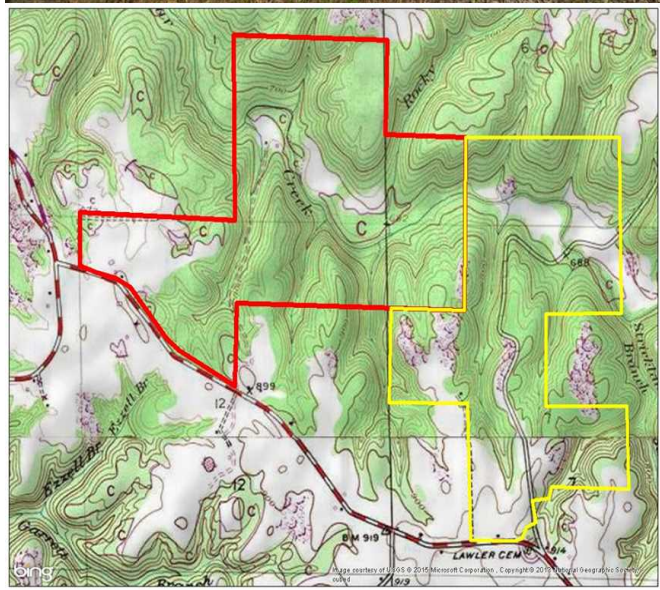
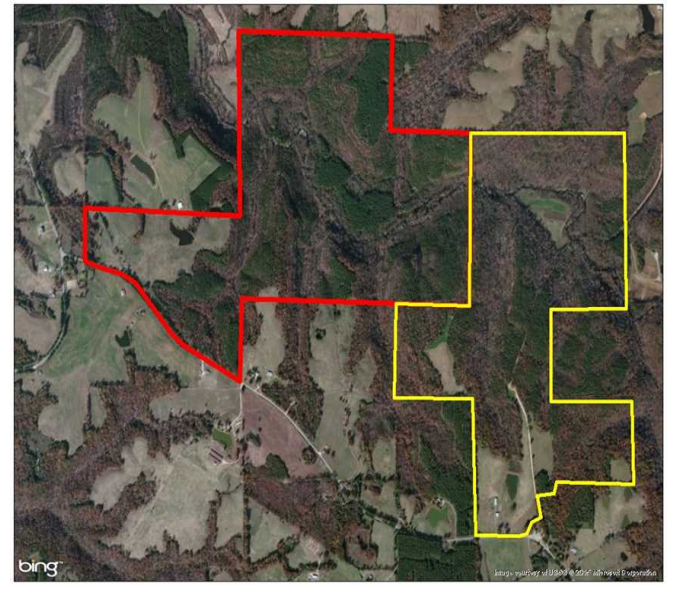
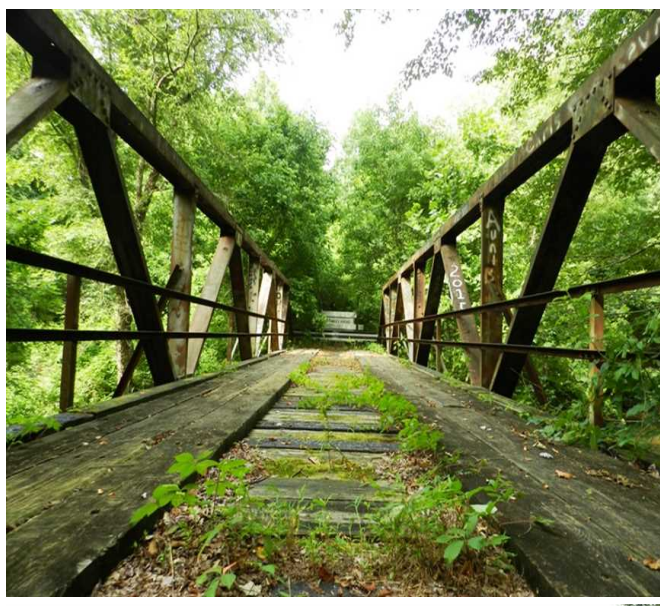
This beautiful property is located along Little Bear Creek with over 1 mile of access. There is a wonderful mix of open fields, hardwood timber and pine plantation. The small house is ideal for overnight trips underneath the shade tree oaks. The farmhouse overlooks the pond and the well manicured Bermuda grass pastures with well maintained fencing.

The property has an abundant population of deer and turkey. Especially turkey. Convenient to the Muscle Shoals area.

Showing by Appointment Only. For a private showing or additional information, please contact Nathan McCollum at 256-345-0074 or email at nmccollum@mossyoakproperties.com. We look forward to speaking with you.
creek whitetail deer Franklin County

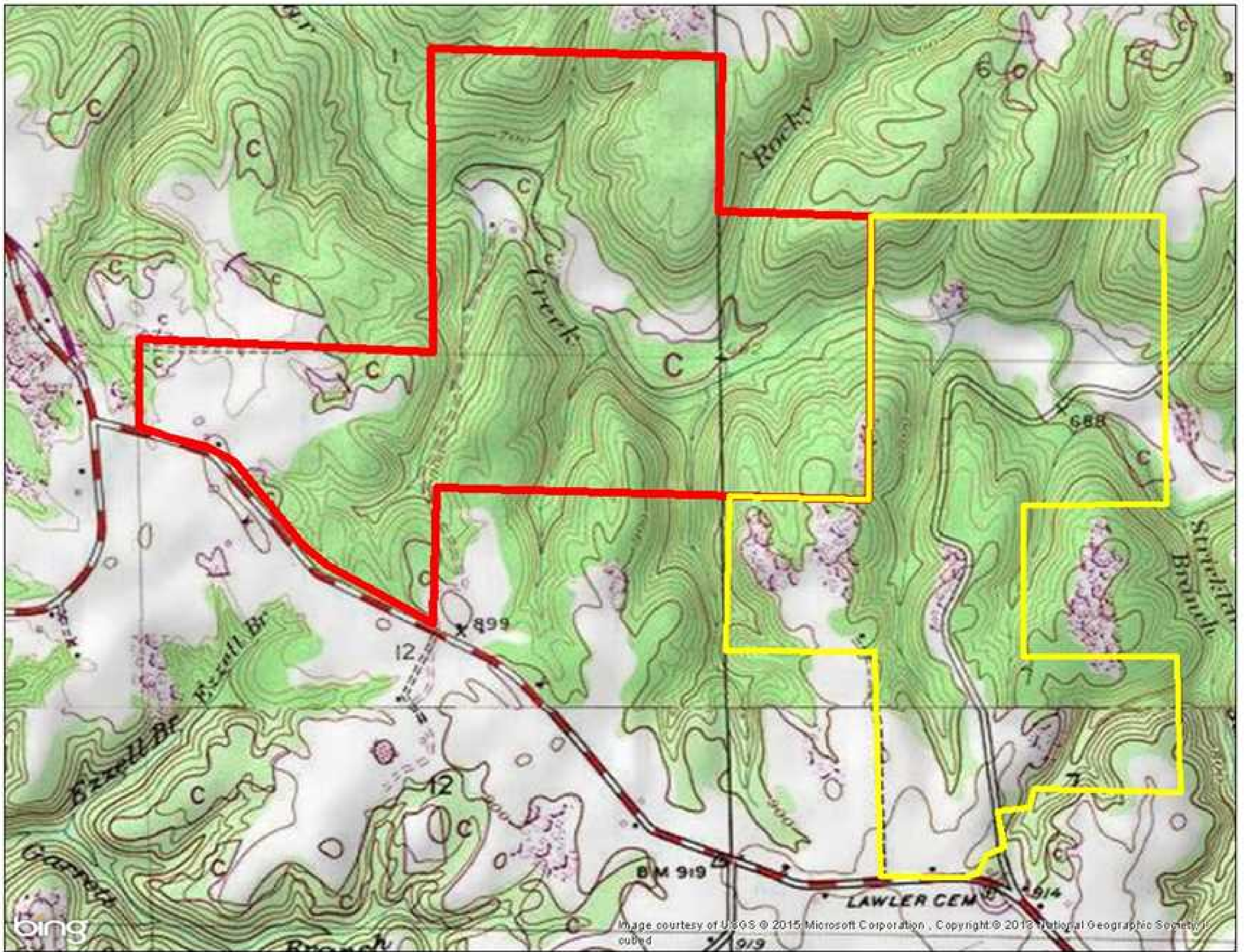
335.00 Acres
Franklin County
GPS 34.3719 X -87.8406

Mossy Oak Properties Southeast Land & Wildlife
www.selandandwildlife.com



335.00 Acres
Franklin County
GPS 34.3719 X -87.8406

Mossy Oak Properties Southeast Land & Wildlife
www.selandandwildlife.com



335.00 Acres
Franklin County
GPS 34.3719 X -87.8406

Mossy Oak Properties Southeast Land & Wildlife
www.selandandwildlife.com