



**Property Details:**

Price : \$140,000

County : Lamar

Acreage : 110.00

Address :

MOPLS ID : 26158

Don't miss an opportunity to own 110 +/- acres of mixed use recreational, timberland, commercial property located in the heart of Big Buck Country! Located approximately 10 miles southwest of Guin, AL and just a stone throw from Fayette County, this property has many fine attributes.

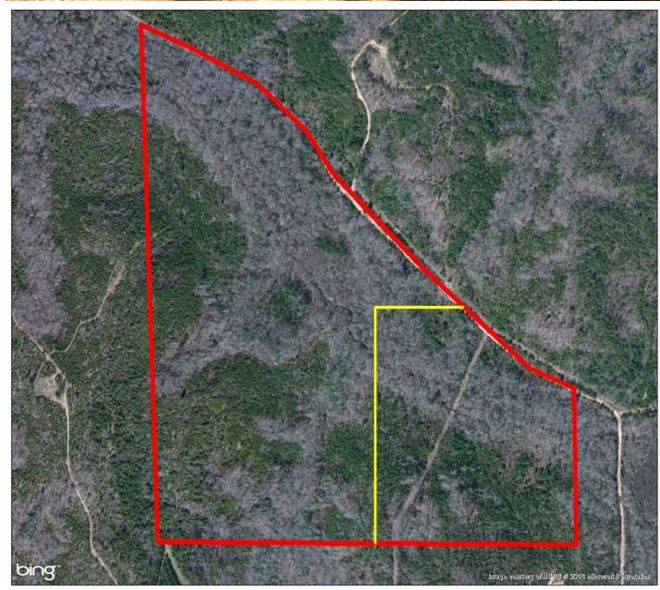
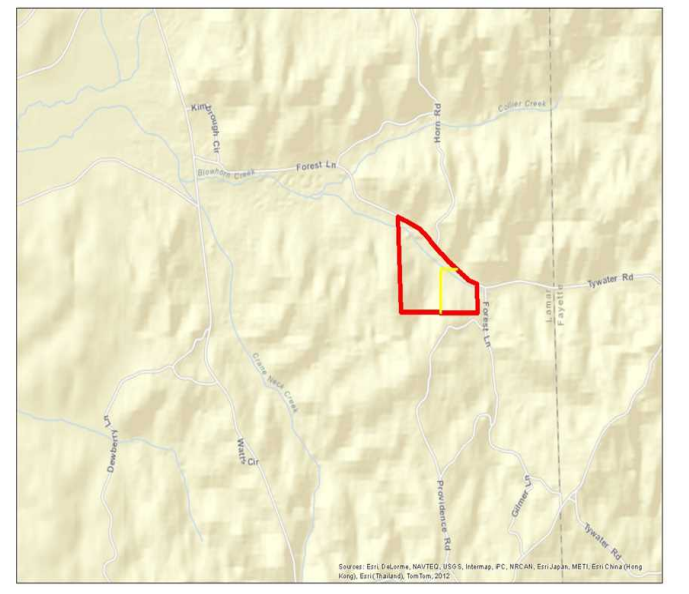
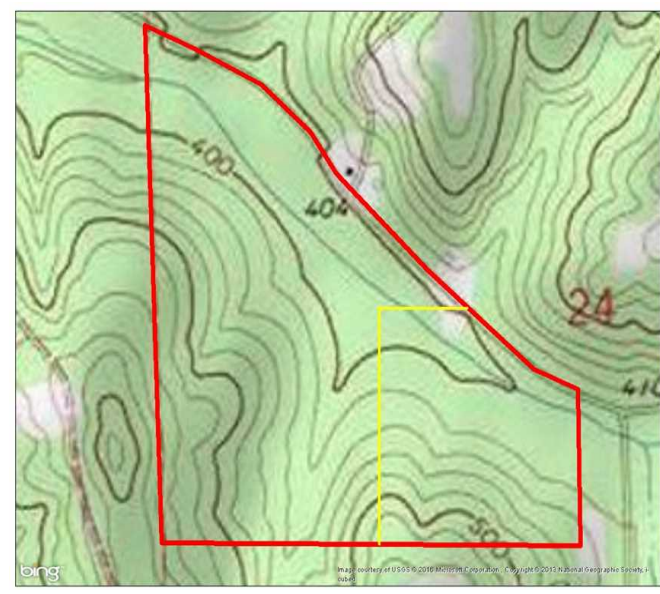
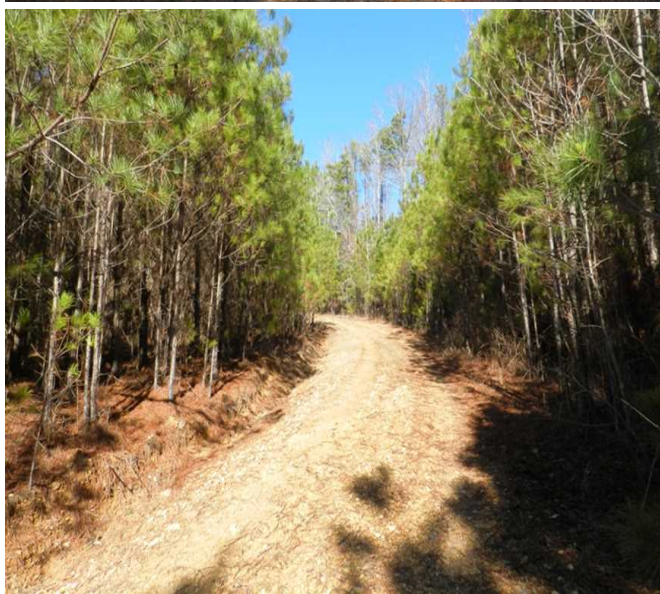
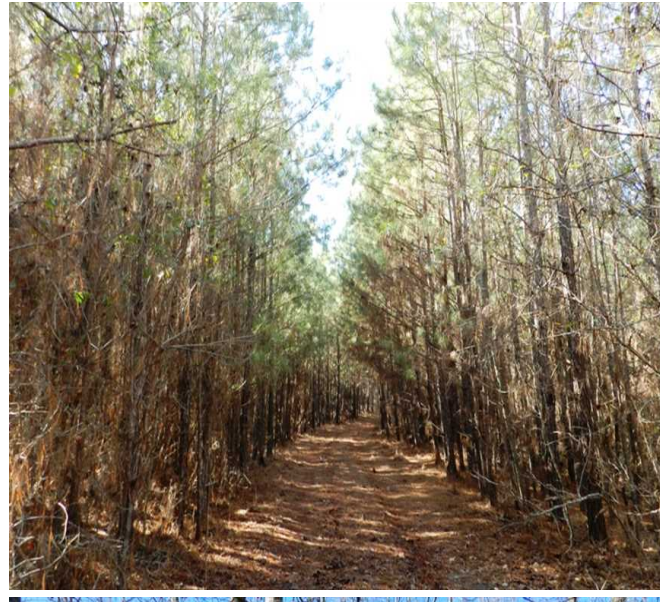
Recently gaining notoriety as the "go to spot" in Alabama for high scoring whitetails, this particular area has an established history of producing true wall hangers. The property not only has the right location but has the timber, adjoining neighbors, and a fantastic layout to back it up.

The land itself has a nice gravel road transecting the property which provides easy access to the farm. The majority of the property consists of a heavily stocked stand of 11-12-year-old loblolly pines with the hardwood drains composed primarily of mature white oak. The adjoining landowners participate in sound game management principles, harvesting only mature bucks.

For a private showing please contact Nathan McCollum at 256-345-0074 or email at [nmccollum@mossyoakproperties.com](mailto:nmccollum@mossyoakproperties.com). I look forward to speaking with you.

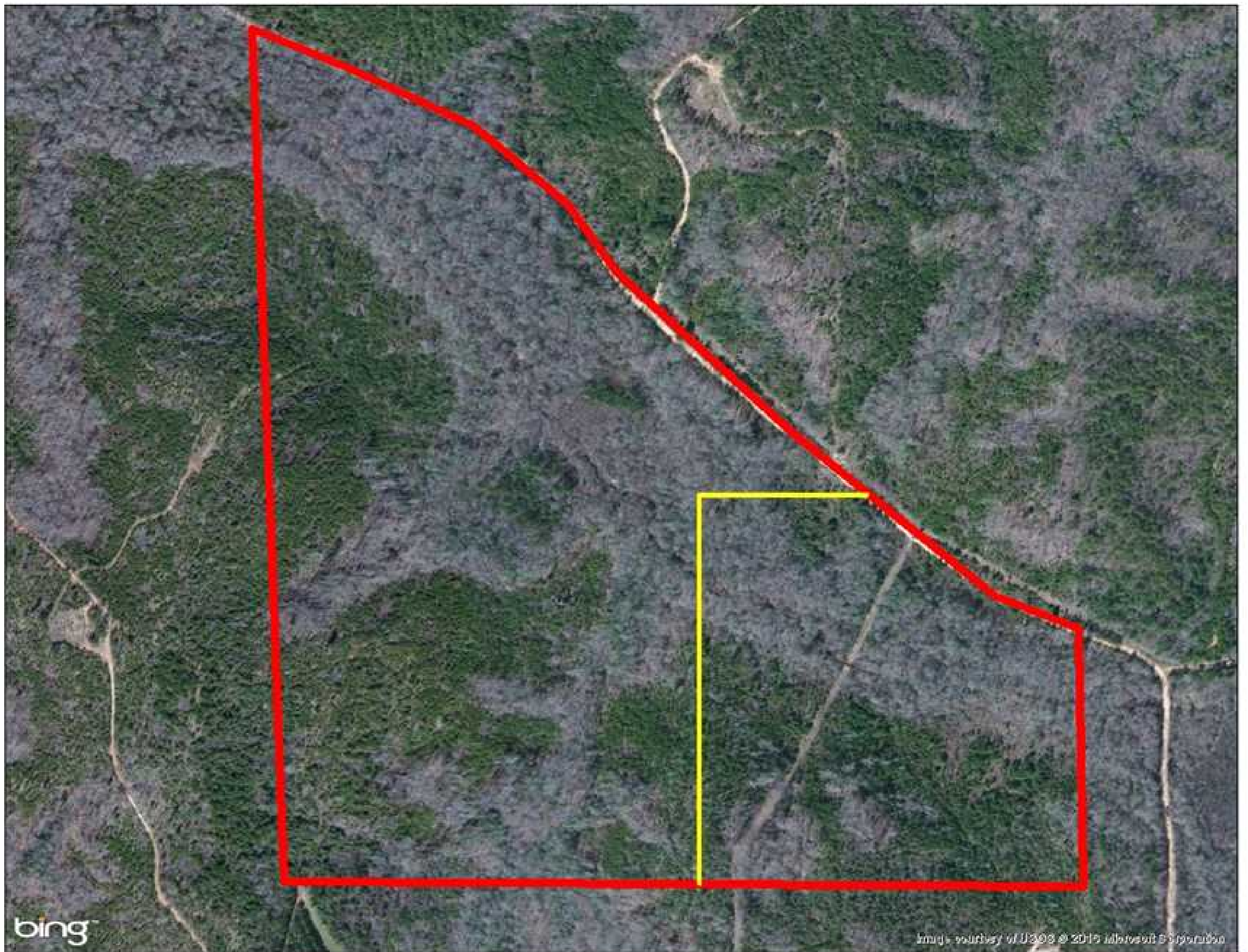
110.00 Acres  
Lamar County  
GPS 33.8273 X -87.9655

Mossy Oak Properties Southeast Land & Wildlife  
[www.selandandwildlife.com](http://www.selandandwildlife.com)



110.00 Acres  
Lamar County  
GPS 33.8273 X -87.9655

Mossy Oak Properties Southeast Land & Wildlife  
[www.selandandwildlife.com](http://www.selandandwildlife.com)



110.00 Acres  
Lamar County  
GPS 33.8273 X -87.9655

Mossy Oak Properties Southeast Land & Wildlife  
[www.selandandwildlife.com](http://www.selandandwildlife.com)