

Property Details:

Price : \$94,000
County : Lauderdale
Acreage : 52.00
Address :
MOPLS ID : 33831

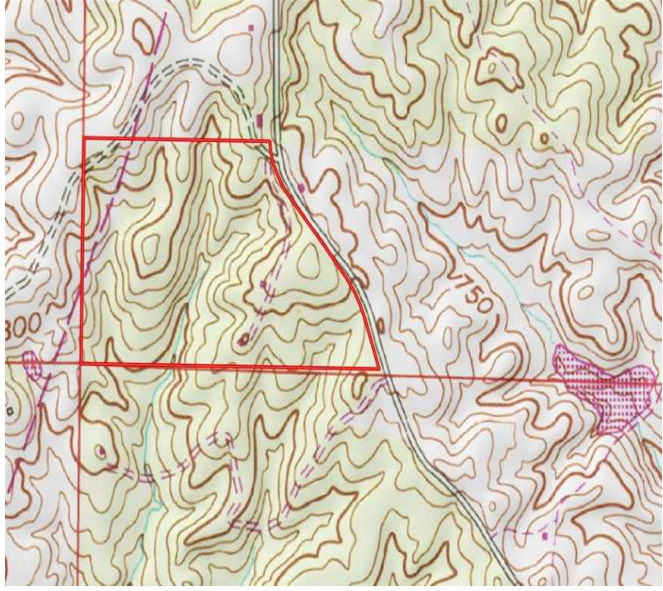
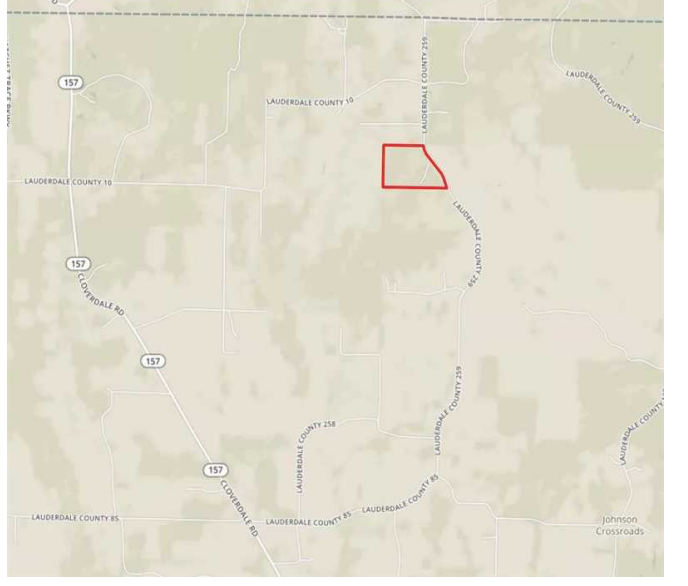
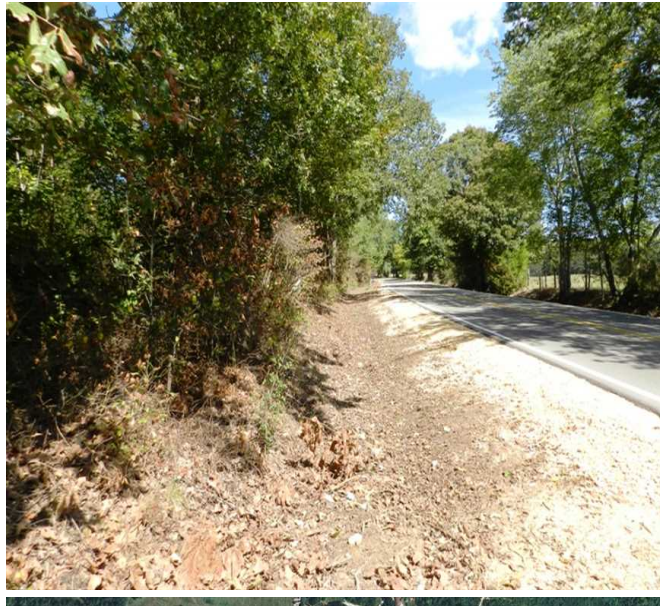
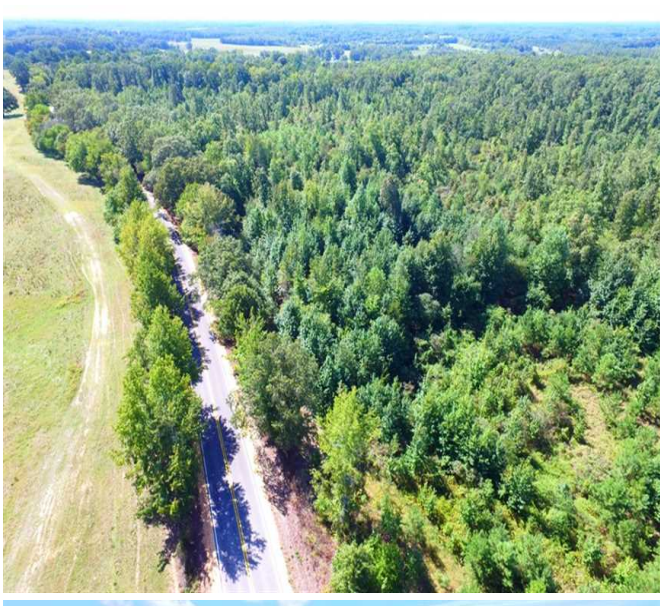
Located on a quiet county road less than 15 minutes to Florence, AL. This +/-54 acres would make for a great building site or a weekend getaway to the countryside. The property has over 1/4 mile of paved county road frontage with utilities available.

Asking \$94,000 or \$1807 per acre

Showing by Appointment Only. For a private showing or additional information, please contact Nathan McCollum at 256-345-0074 or email at nmccollum@mossyoakproperties.com. We look forward to speaking with you.

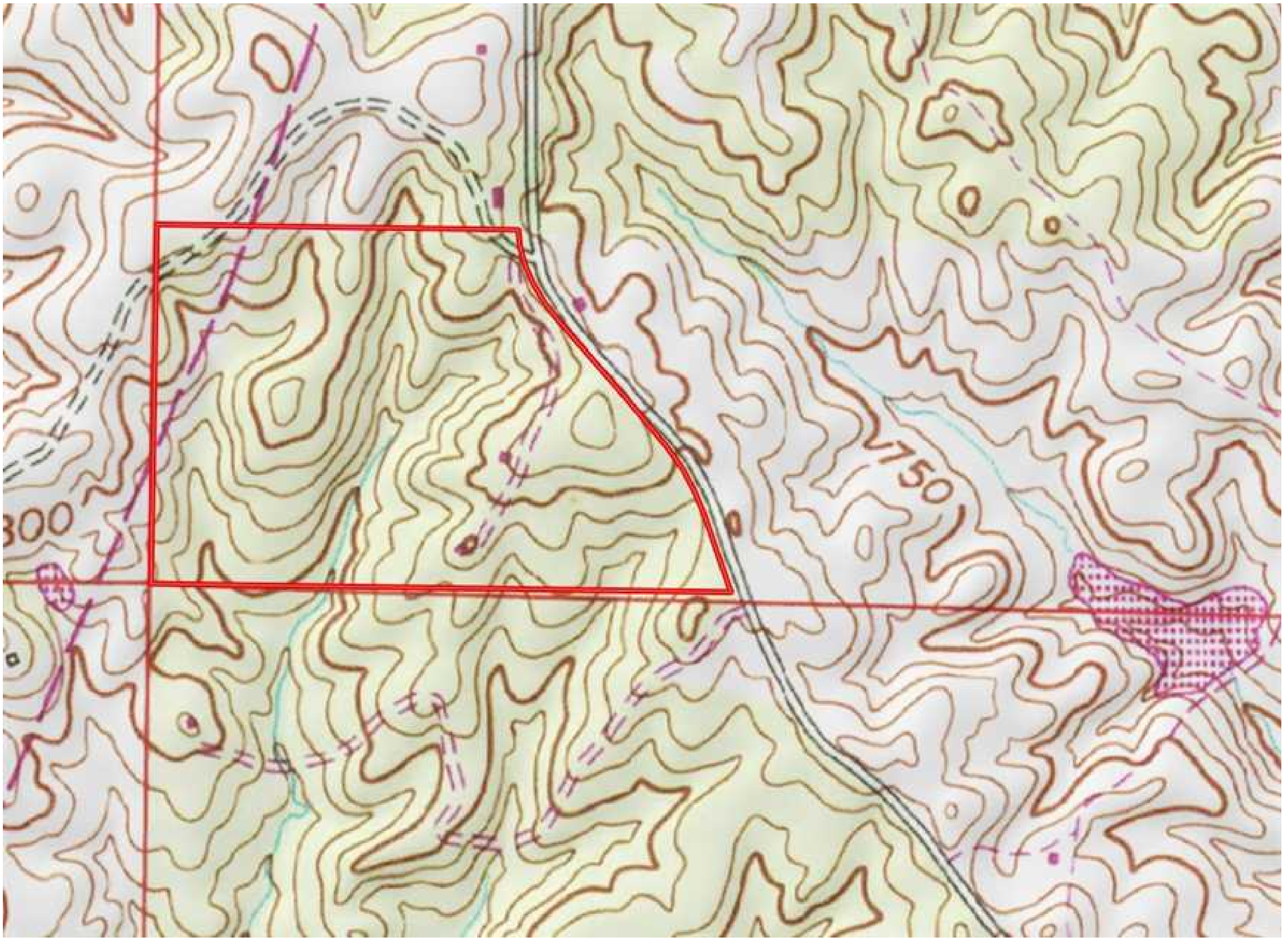
52.00 Acres
Lauderdale County
GPS 34.9925 X -87.7731

Mossy Oak Properties Southeast Land & Wildlife
www.selandandwildlife.com



52.00 Acres
Lauderdale County
GPS 34.9925 X -87.7731

Mossy Oak Properties Southeast Land & Wildlife
www.selandandwildlife.com



52.00 Acres
Lauderdale County
GPS 34.9925 X -87.7731

Mossy Oak Properties Southeast Land & Wildlife
www.selandandwildlife.com