

**Property Details:**

Price : \$219,000  
County : Etowah  
Acreage : 178.00  
Address :  
MOPLS ID : 28014

This property with beautiful Coosa River views awaits you less than 15 minutes from north of Gadsden in the "Ballplay" area! This is a 178+/- acre retreat with bottomland timber composed primarily of hardwood and offers significant value. Ballplay Creek transects the property and this is a perfect location for duck, turkey, whitetail deer and watersports.

Asking Price: \$219,000 or \$1,230 per acre

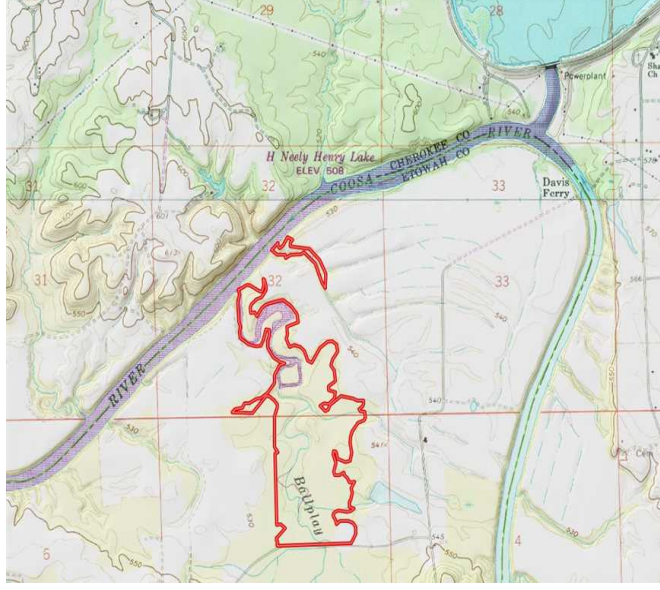
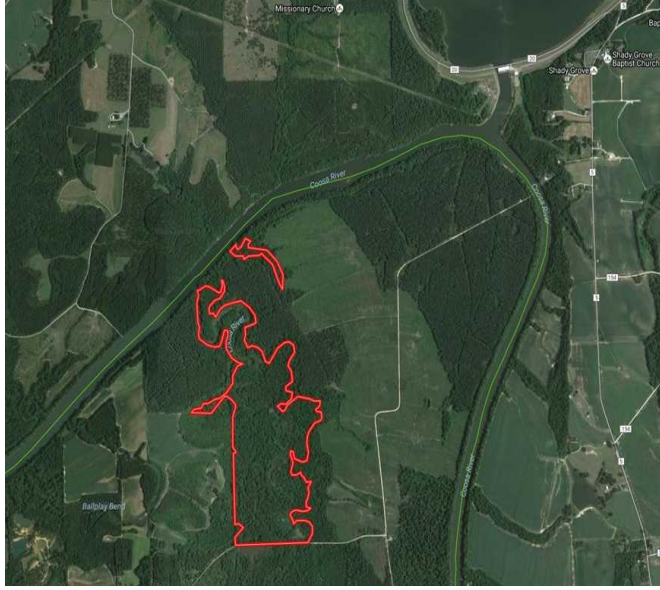
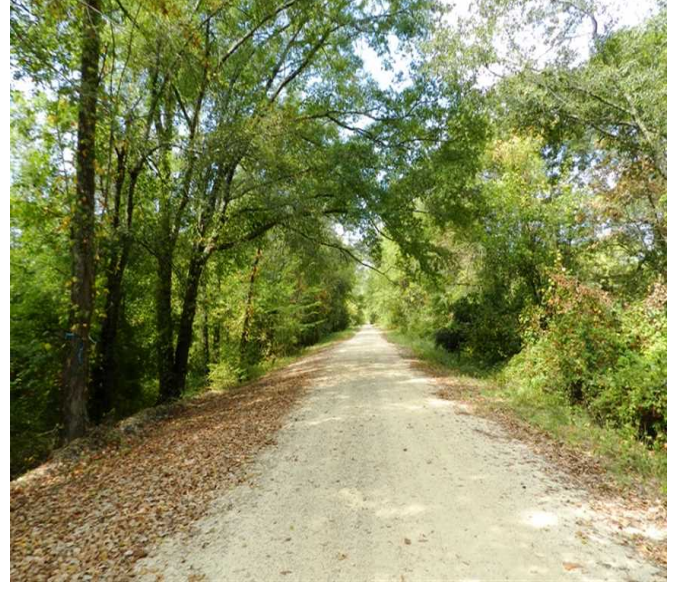
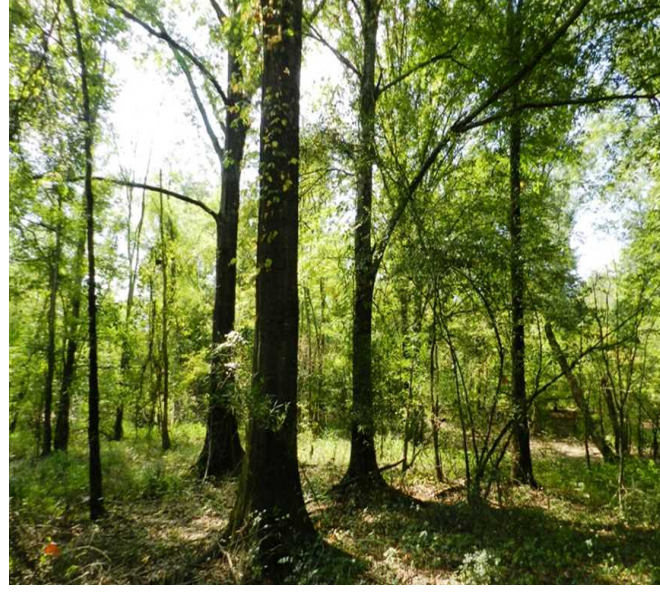
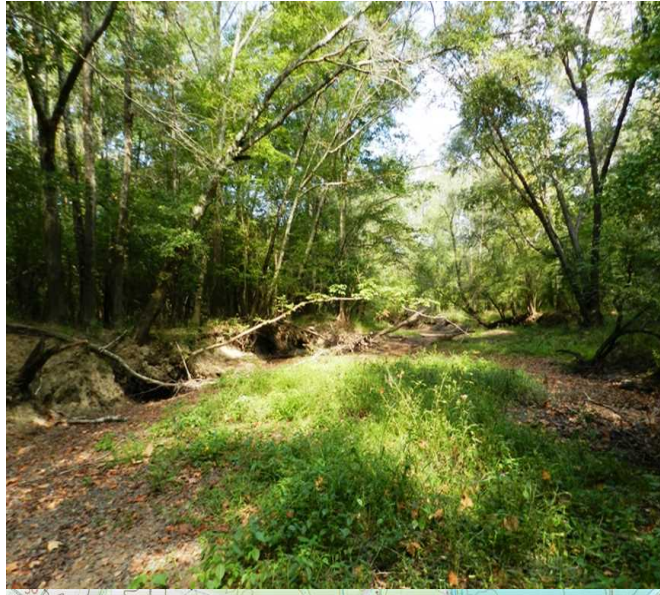
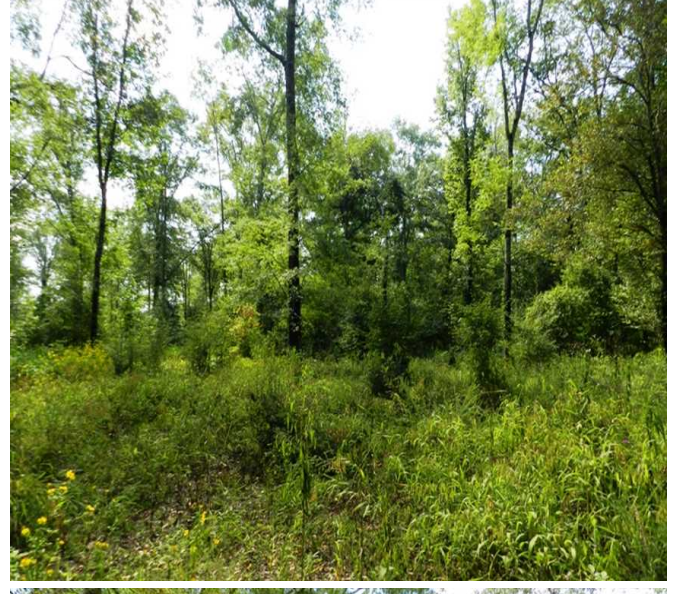
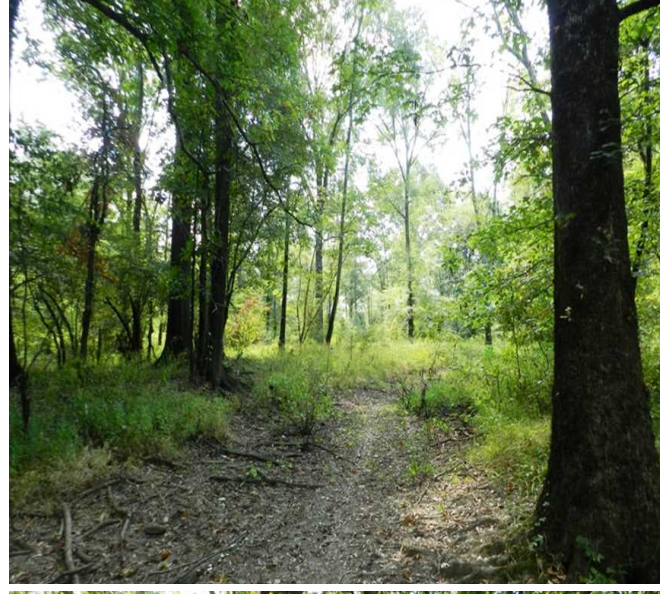
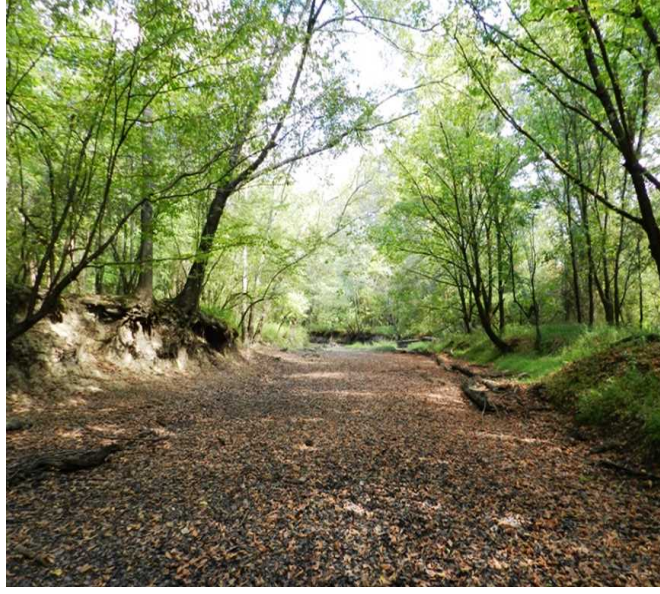
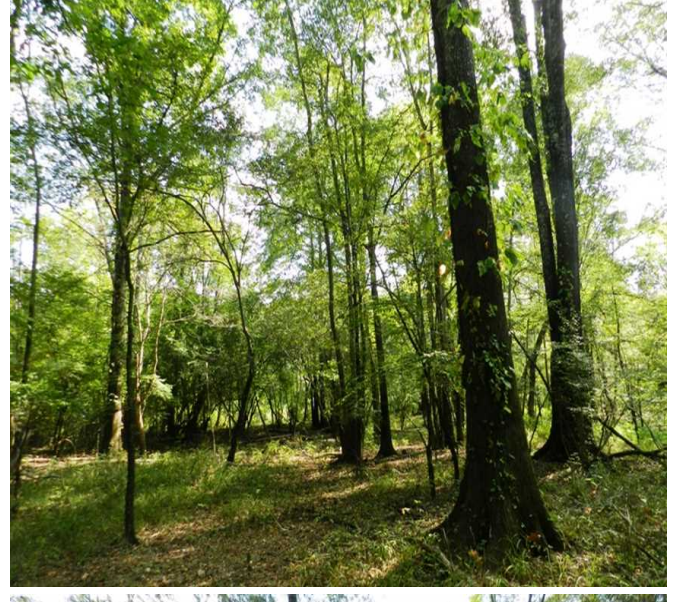
Showing by Appointment Only. For a private showing or additional information, please contact Nathan McCollum at 256-345-0074 or email at [nmccollum@mossyoakproperties.com](mailto:nmccollum@mossyoakproperties.com). We look forward to speaking with you.

178 acre propertywater sports

178.00 Acres  
Etowah County  
GPS 34.1073 X -85.8106

Mossy Oak Properties Southeast Land & Wildlife  
[www.selandandwildlife.com](http://www.selandandwildlife.com)

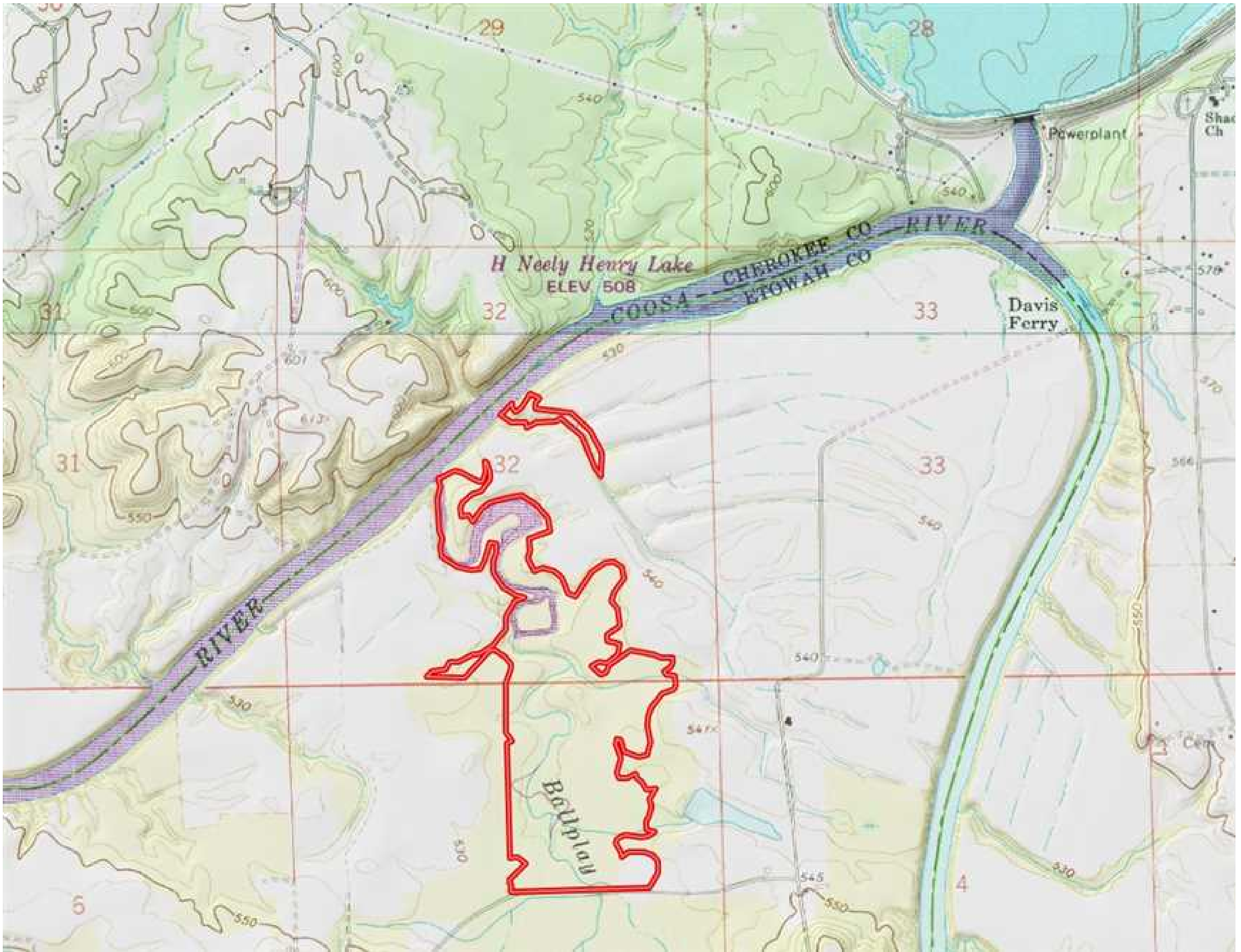




178.00 Acres  
Etowah County  
GPS 34.1073 X -85.8106

Mossy Oak Properties Southeast Land & Wildlife  
[www.selandandwildlife.com](http://www.selandandwildlife.com)





178.00 Acres  
Etowah County  
GPS 34.1073 X -85.8106

Mossy Oak Properties Southeast Land & Wildlife  
[www.selandandwildlife.com](http://www.selandandwildlife.com)