



Property Details:

Price : \$149,000

County : Tippah

Acreage : 139.54

Address : County Road 7501

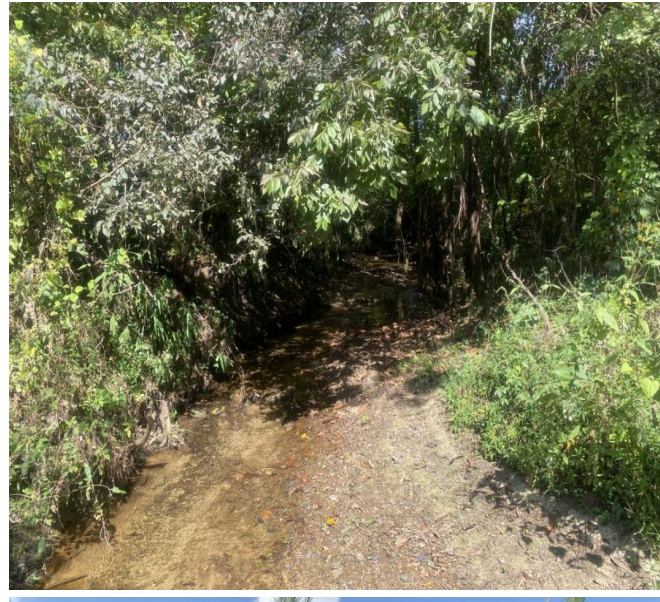
MOPLS ID : 20013

This tract would make for a very nice hunting tract. Two branches connect on the property to form Twentymile Creek. There is good flat bottomland along the creek. Gravel county road with 1/2 mile road frontage. Utilities available. Approximately 124.95 acres are in 3 year old pine and 14.59 acres hardwood. 30 minutes to Tupelo.

Shown by appointment only. Text/Call Nathan McCollum at 256-345-0074 to schedule an appointment or for additional information.

139.54 Acres
Tippah County
GPS 34.6794085 X -88.5583978

Mossy Oak Properties Southeast Land & Wildlife
www.selandandwildlife.com



139.54 Acres
Tippah County
GPS 34.6794085 X -88.5583978

Mossy Oak Properties Southeast Land & Wildlife
www.selandandwildlife.com



139.54 Acres
Tippah County
GPS 34.6794085 X -88.5583978

Mossy Oak Properties Southeast Land & Wildlife
www.selandandwildlife.com