

**Property Details:**

Price : \$167,195  
County : Marion  
Acreage : 85.00  
Address :  
MOPLS ID : 33473

This property is located inside the city limits of Hamilton, AL along Highway 17. Excellent hardwood timberland. A great opportunity to enjoy the outdoors yet still being close to town. Plenty of deer, turkey, and small game located on the property. This property would make for a great homesite as well.

Utilities available.

Asking \$167,195 or \$1967 per acre.

Mapright link: <http://mapright.com/ranching/maps/eddb44608550b7bd55cace922ac2ee62/share>

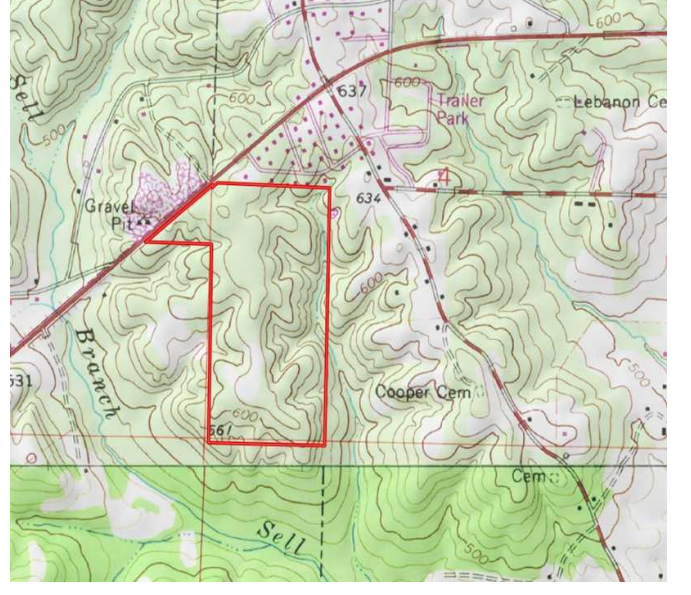
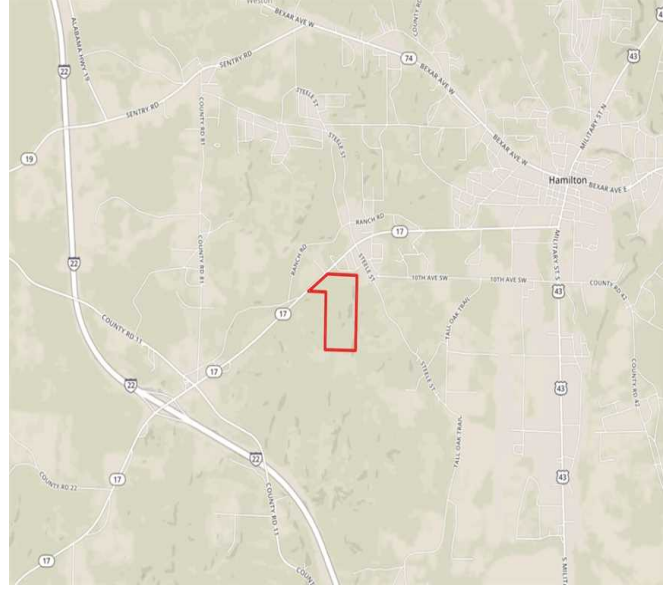
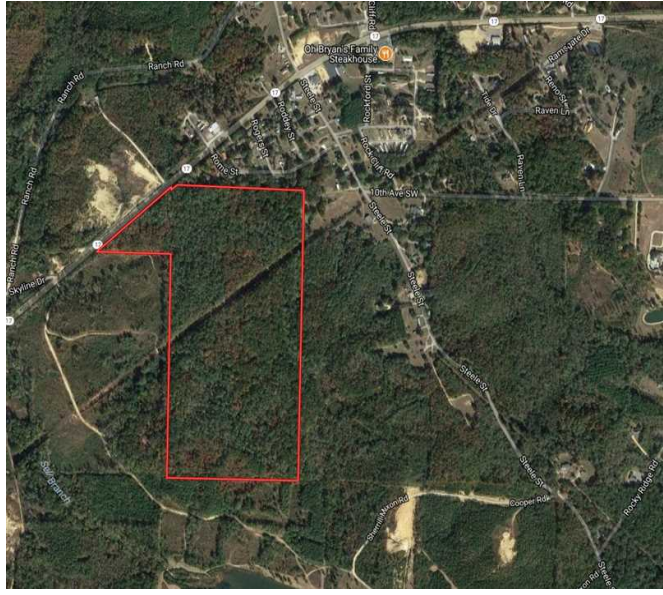
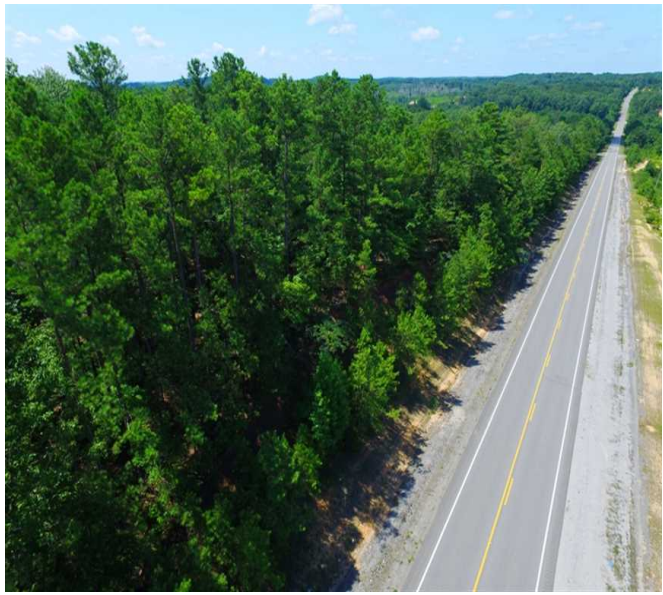
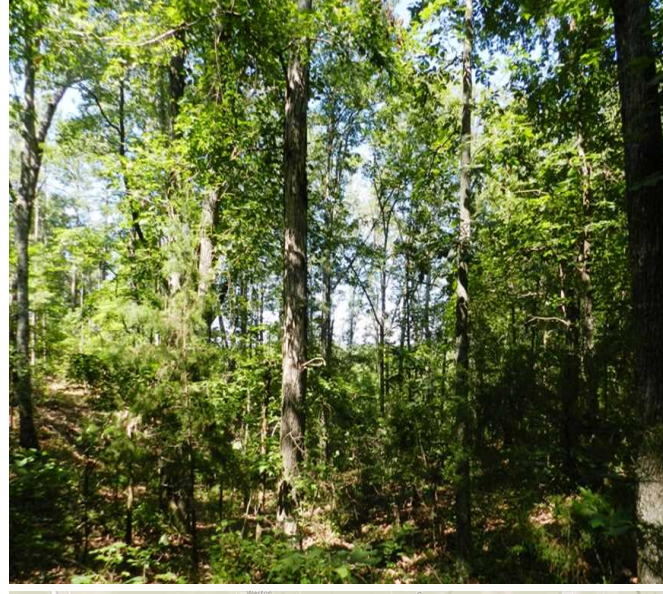
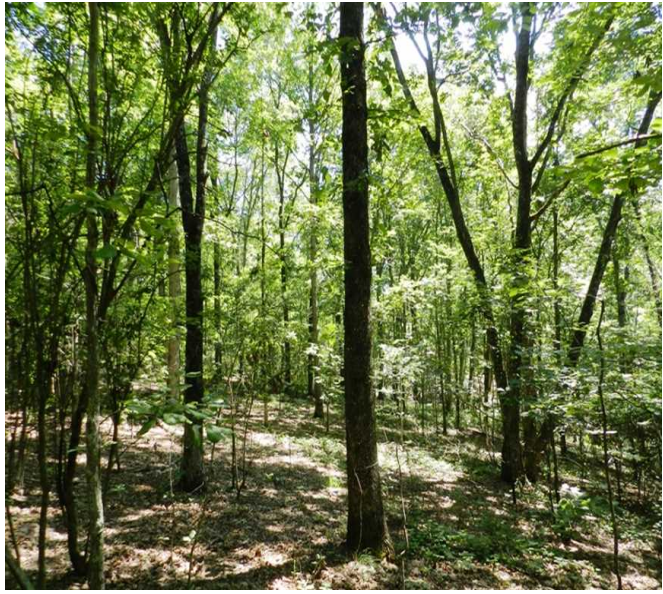
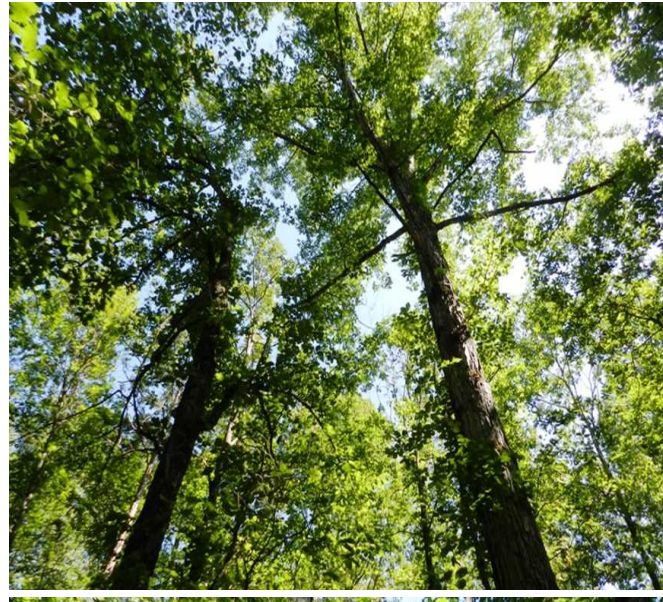
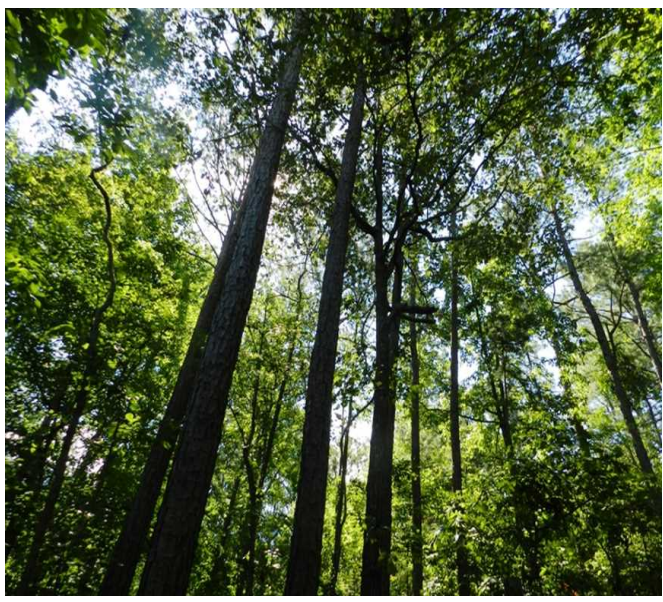
Youtube link: <http://www.youtube.com/watch?v=P5MX3SG0zHc&t=16s>

Shown by Appointment Only.

For a private showing or additional information, please contact Nathan McCollum at 256-345-0074 or email at [nmccollum@mossyoakproperties.com](mailto:nmccollum@mossyoakproperties.com). We look forward to speaking with you.

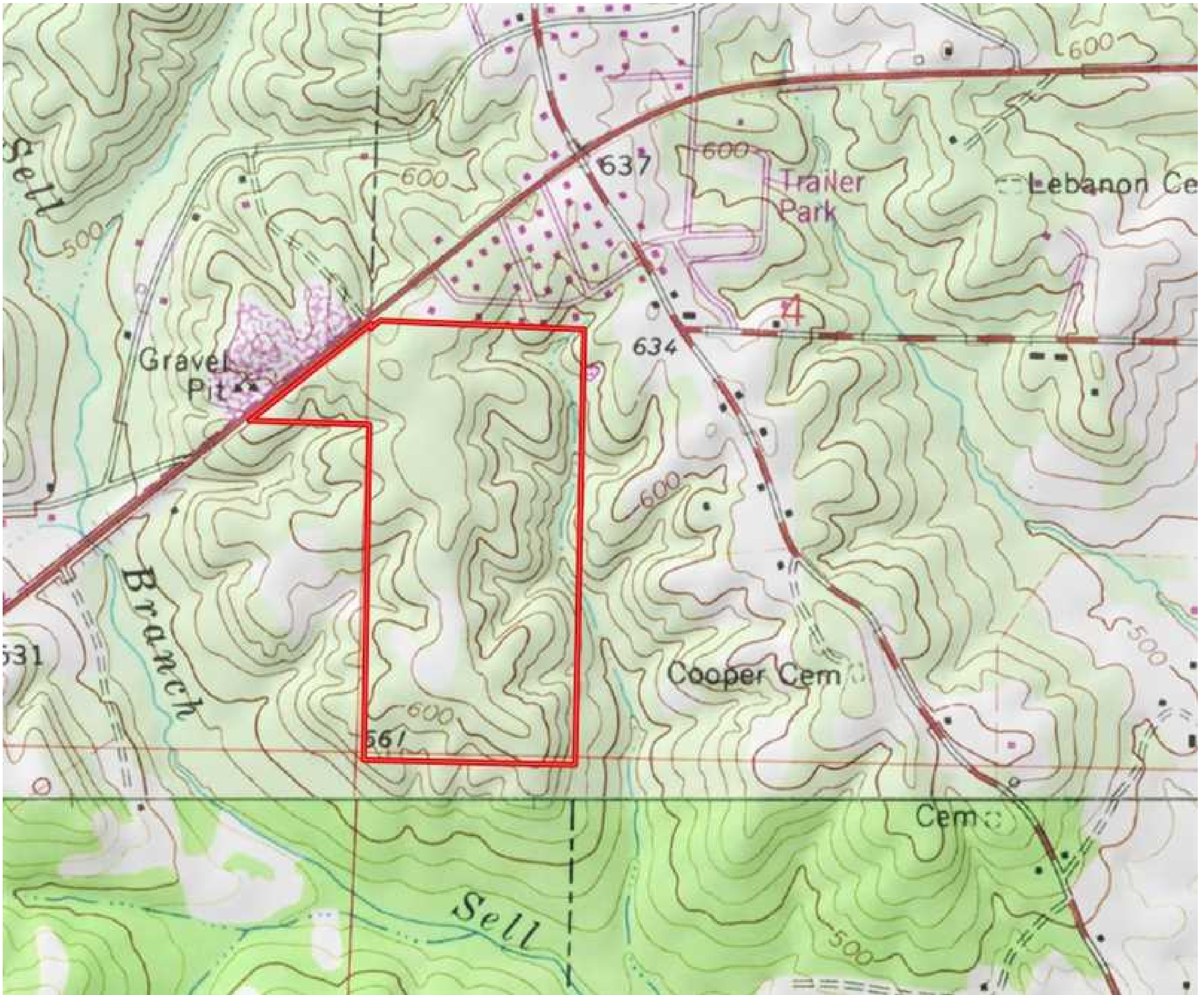
85.00 Acres  
Marion County  
GPS 34.1329 X -88.0228

Mossy Oak Properties Southeast Land & Wildlife  
[www.selandandwildlife.com](http://www.selandandwildlife.com)



85.00 Acres  
 Marion County  
 GPS 34.1329 X -88.0228

Mossy Oak Properties Southeast Land & Wildlife  
[www.selandandwildlife.com](http://www.selandandwildlife.com)



85.00 Acres  
Marion County  
GPS 34.1329 X -88.0228

Mossy Oak Properties Southeast Land & Wildlife  
[www.selandandwildlife.com](http://www.selandandwildlife.com)