

Property Details:

Price : \$1
County : Lawrence
Acreage : 23.60
Address :
MOPLS ID : 33486

TRACT 2

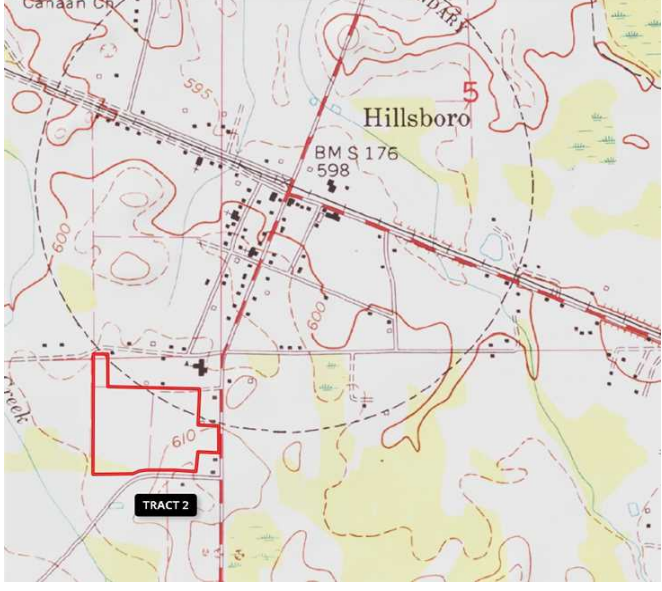
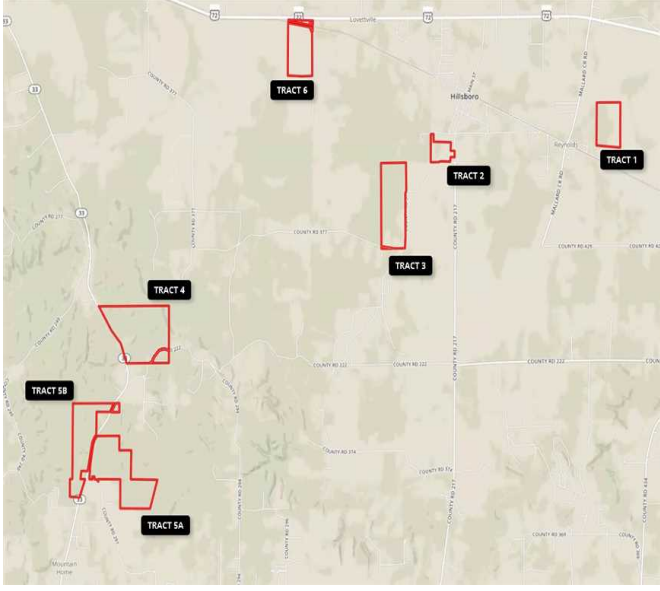
+/-23.6 Acres located in Hillsboro, AL

The property will be sold by SEALED BID on OCTOBER 3, 2017

For additional information, see the attached Bid Package document or call Elton Coley at 256-366-0575 or email ercoley@bellsouth.net

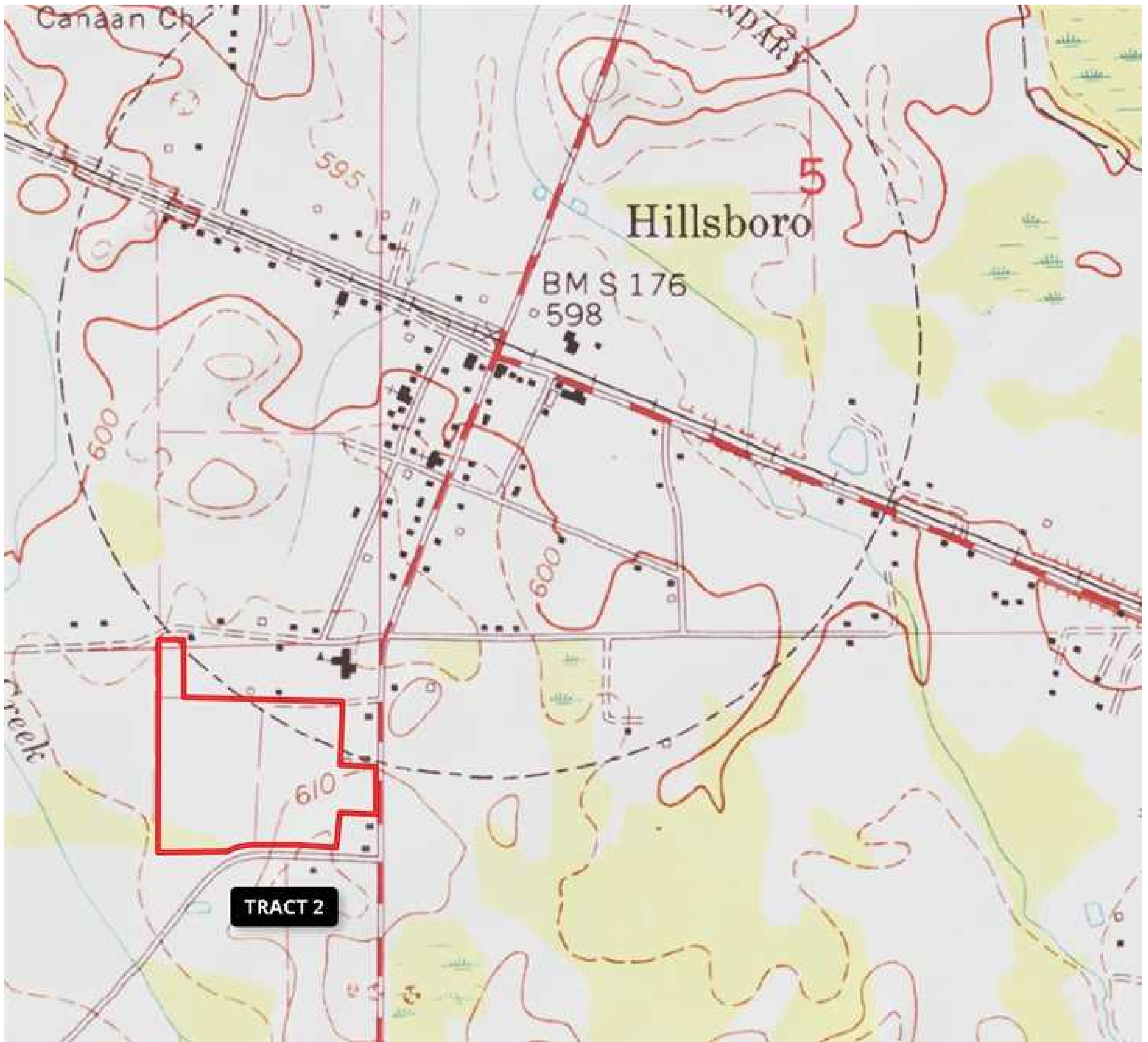
23.60 Acres
Lawrence County
GPS 34.6323 X -87.1953

Mossy Oak Properties Southeast Land & Wildlife
www.selandandwildlife.com



23.60 Acres
Lawrence County
GPS 34.6323 X -87.1953

Mossy Oak Properties Southeast Land & Wildlife
www.selandandwildlife.com



23.60 Acres
Lawrence County
GPS 34.6323 X -87.1953

Mossy Oak Properties Southeast Land & Wildlife
www.selandandwildlife.com