

Property Details:

Price : \$1
County : Lawrence
Acreage : 120.00
Address :
MOPLS ID : 33487

TRACT 3

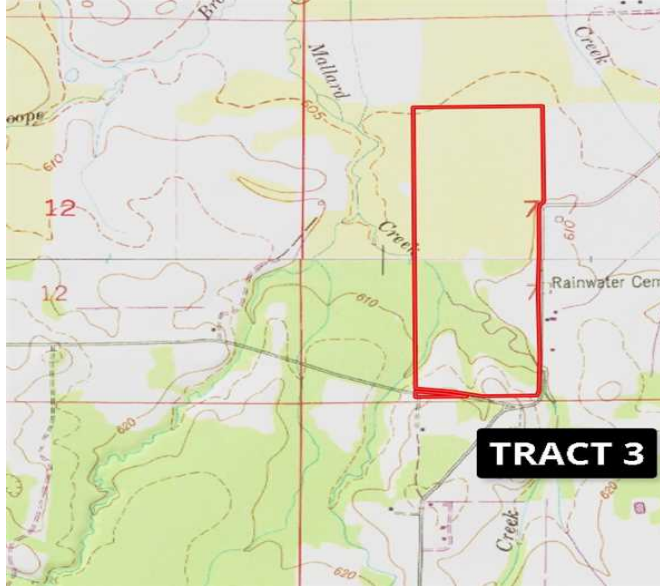
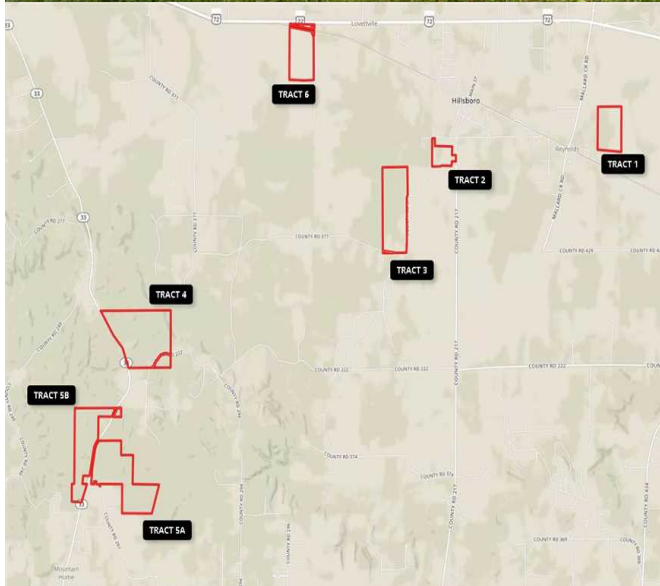
+/-120 acres located in Hillsboro, AL

The property will be sold by SEALED BID on OCTOBER 3, 2017

For additional information, see the attached Bid Package document or call Elton Coley at 256-366-0575 or email ercoley@bellsouth.net

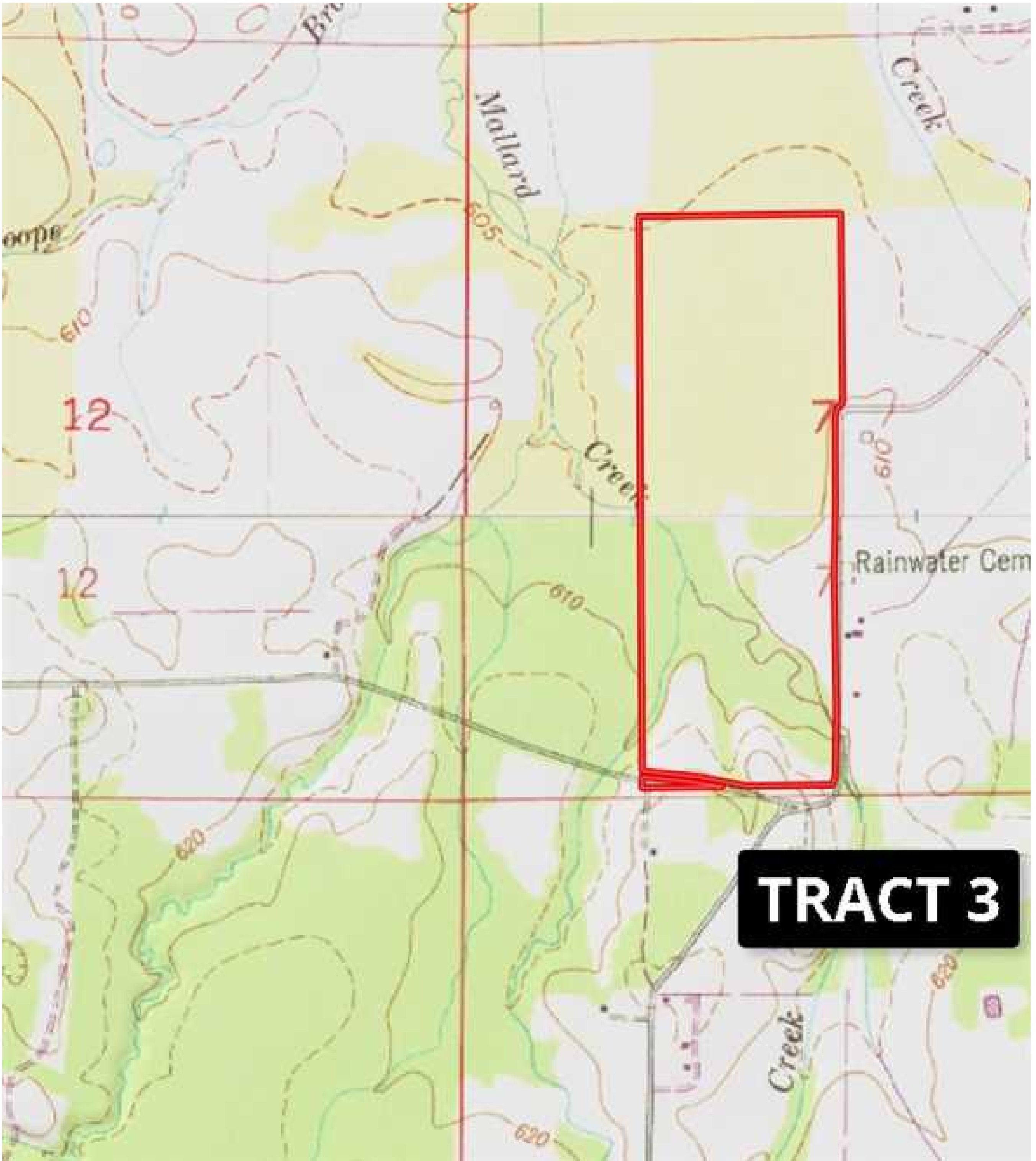
120.00 Acres
Lawrence County
GPS 34.6205 X -87.2040

Mossy Oak Properties Southeast Land & Wildlife
www.selandandwildlife.com



120.00 Acres
Lawrence County
GPS 34.6205 X -87.2040

Mossy Oak Properties Southeast Land & Wildlife
www.selandandwildlife.com



120.00 Acres
Lawrence County
GPS 34.6205 X -87.2040

Mossy Oak Properties Southeast Land & Wildlife
www.selandandwildlife.com