

Property Details:

Price : \$1
County : Lawrence
Acreage : 143.40
Address :
MOPLS ID : 33489

TRACT 5A

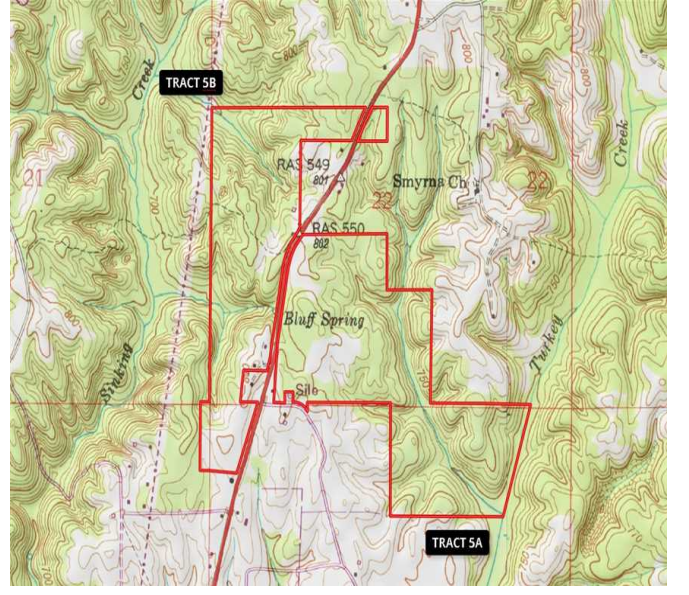
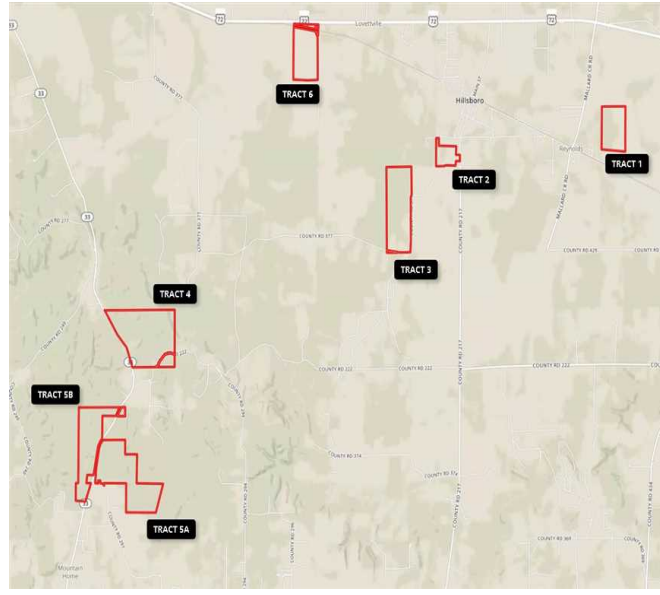
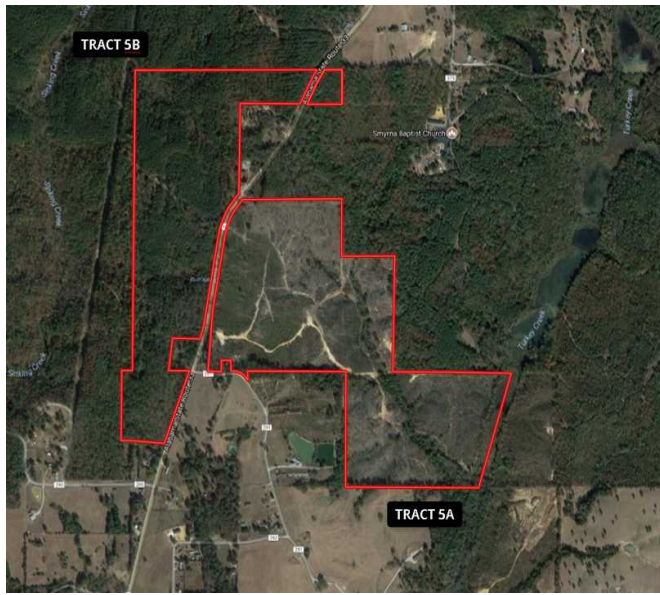
+/-143.4 acres located 4 miles south of Courtland, AL on Highway 33

The property will be sold by SEALED BID on OCTOBER 3, 2017

For additional information, see the attached Bid Package document or call Elton Coley at 256-366-0575 or email ercoley@bellsouth.net

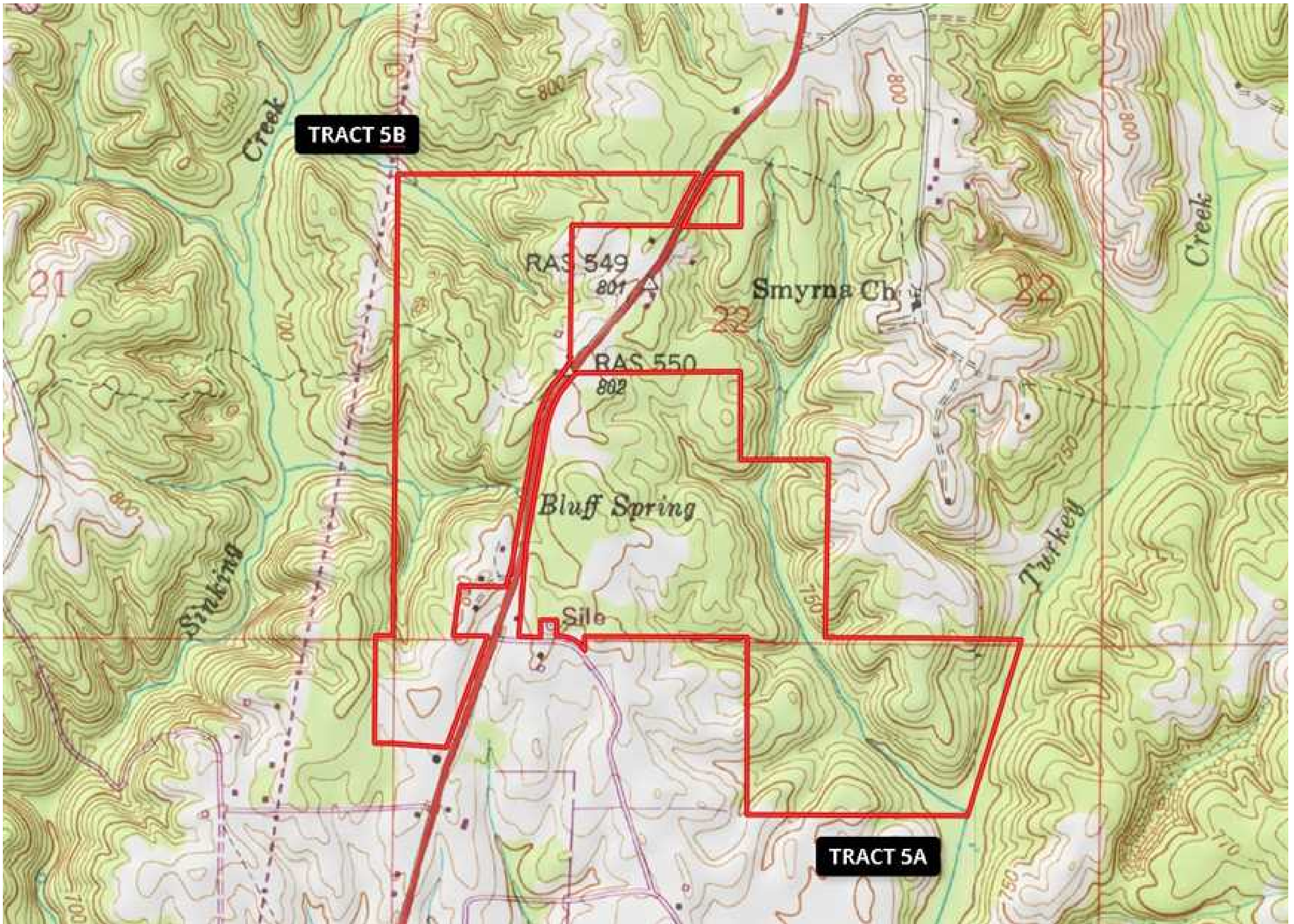
143.40 Acres
Lawrence County
GPS 34.5929 X -87.2600

Mossy Oak Properties Southeast Land & Wildlife
www.selandandwildlife.com



143.40 Acres
Lawrence County
GPS 34.5929 X -87.2600

Mossy Oak Properties Southeast Land & Wildlife
www.selandandwildlife.com



143.40 Acres
Lawrence County
GPS 34.5929 X -87.2600

Mossy Oak Properties Southeast Land & Wildlife
www.selandandwildlife.com