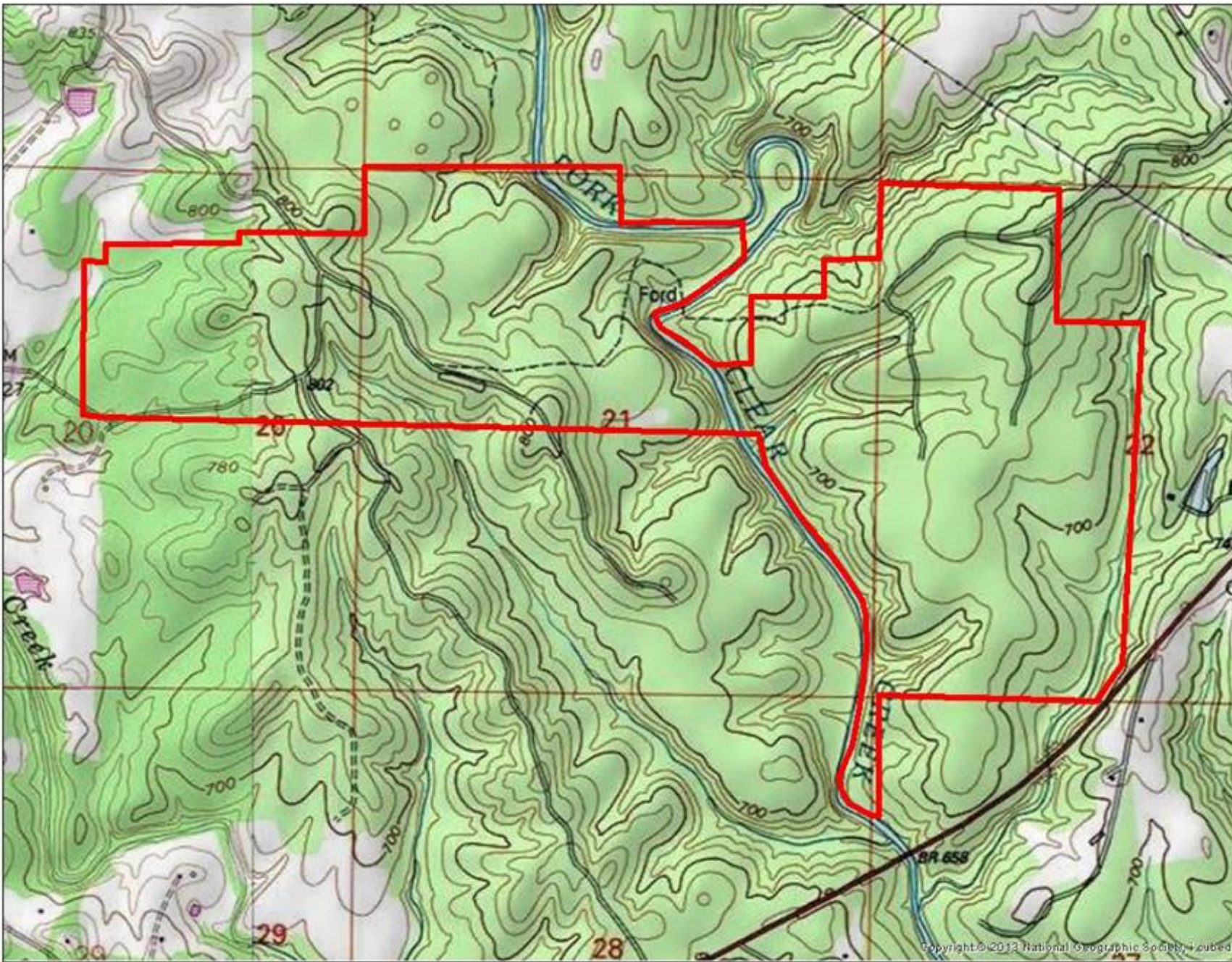


Large Recreational Tract at Timberland Price



Property Details:

Price : \$931,920
County : Winston
Acreage : 706.00
Address :
MOPLS ID : 21060

706 acres of beautifully thinned pine plantation and hardwood bottoms located 3 miles west of Double Springs, AL on Hwy 278. Clear Creek runs through the property for over 1 mile. This is a year round, crystal clear, sandy bottom creek with unbelievable rock features. There are numerous green fields on the property with great internal roads. This is not typical topography of Winston County. The terrain is gently rolling and a large portion of the property would be conducive for pastureland. These highly productive soils are showcased by the quality timber that is currently standing on the property. There are several pine sawmills less than 30 miles from this property.

Additional Information:

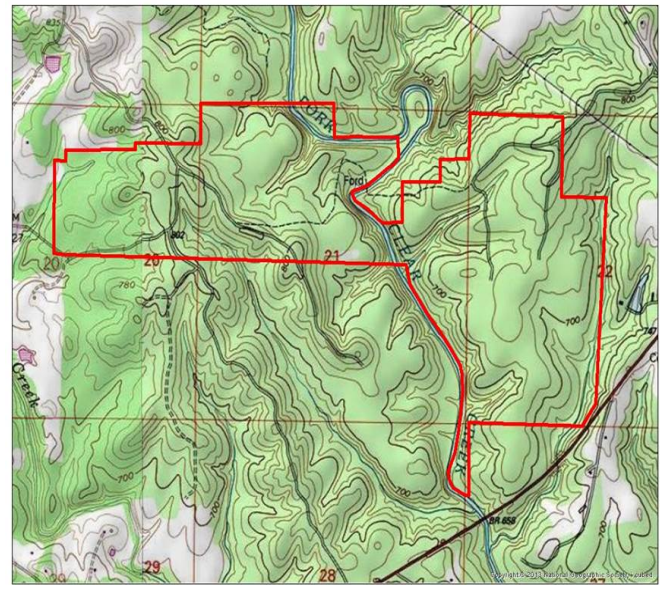
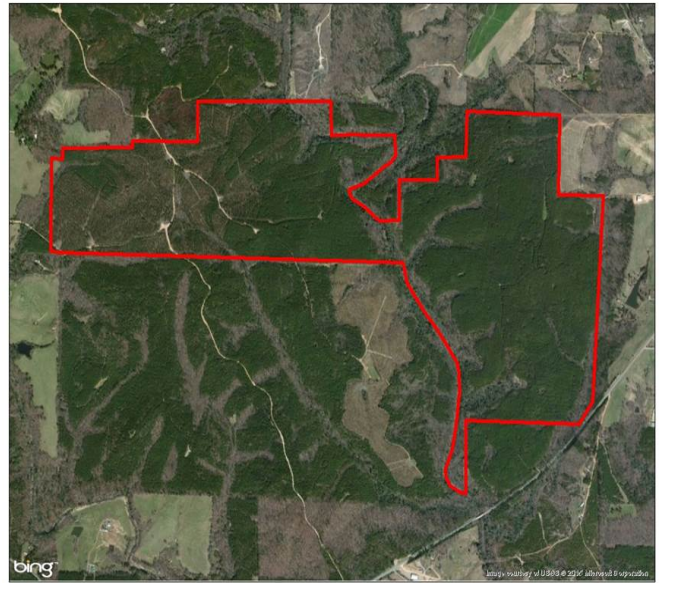
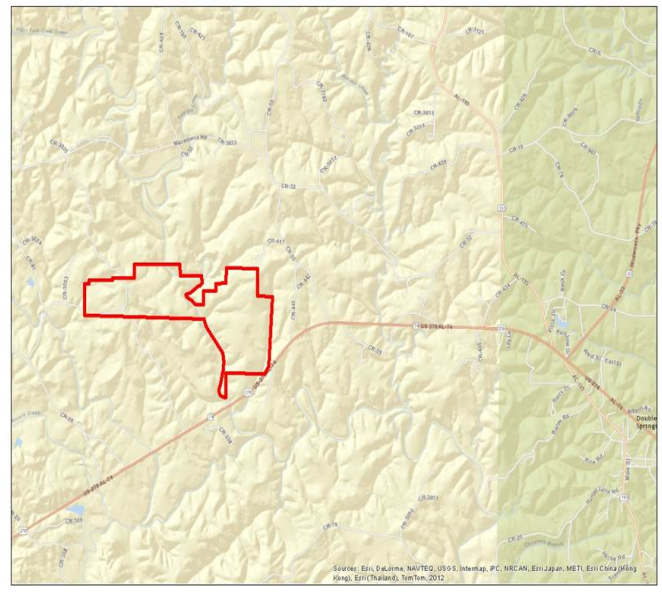
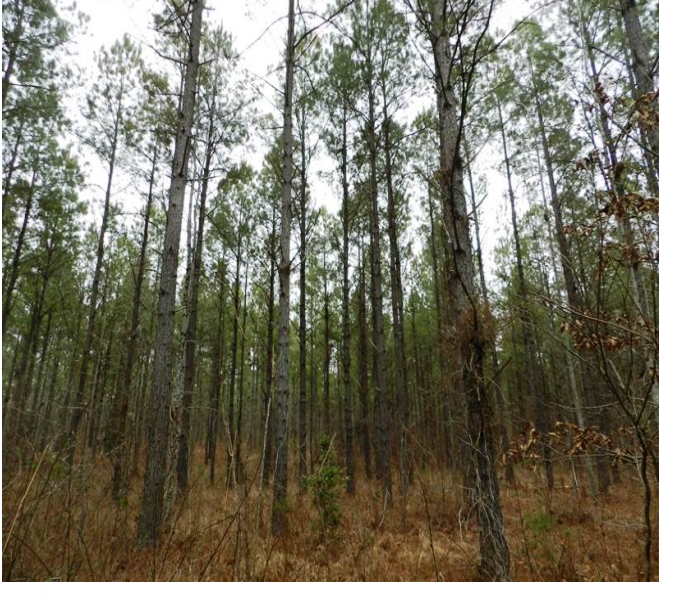
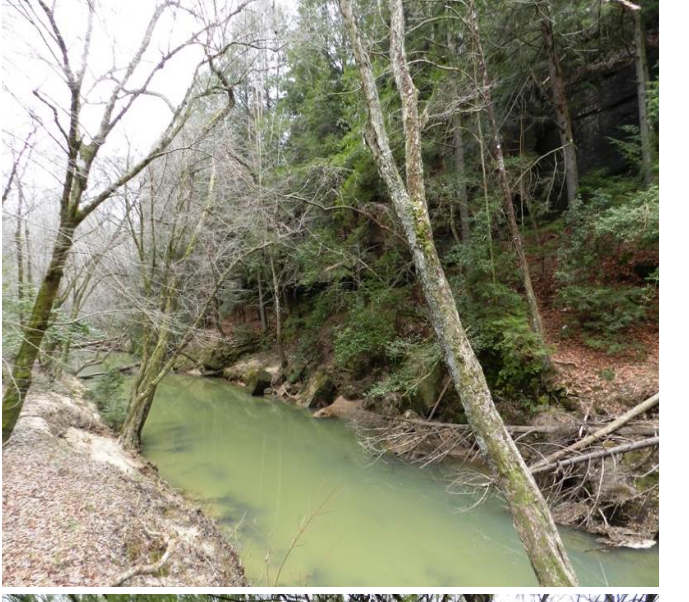
- Taxes are approximately \$1000 annually
- Less than 15 minutes to Lewis-Smith Lake
- Convenient to Bankhead National Forest (canoeing, hiking, hunting, etc)
- 1 hr to Huntsville
- 1 hr to Birmingham

Showing by Appointment Only. For a private showing or additional information, please contact Nathan McCollum at 256-345-0074 or email at nmccollum@mossyoakproperties.com. We look forward to speaking with you.

timberland whitetail deer creek road frontage Winston County

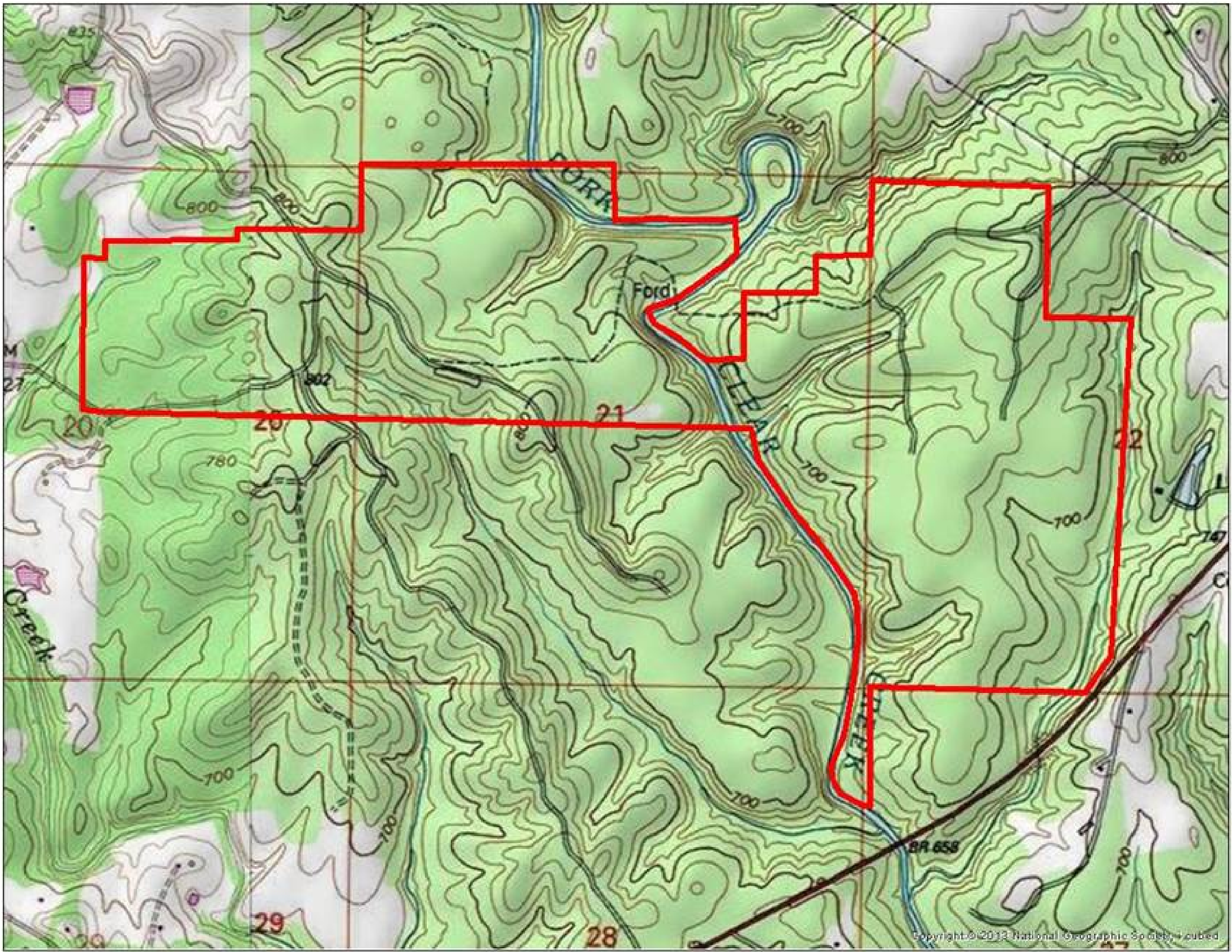
706.00 Acres
Winston County
GPS 34.1595 X -87.4753

Mossy Oak Properties Southeast Land & Wildlife
www.selandandwildlife.com



706.00 Acres
Winston County
GPS 34.1595 X -87.4753

Mossy Oak Properties Southeast Land & Wildlife
www.selandandwildlife.com



706.00 Acres
Winston County
GPS 34.1595 X -87.4753

Mossy Oak Properties Southeast Land & Wildlife
www.selandandwildlife.com