



**Property Details:**

Price : \$225,000

County : Colbert

Acreage : 82.00

Address : 384 Pennywinkle Creek  
Lane

MOPLS ID : 22597

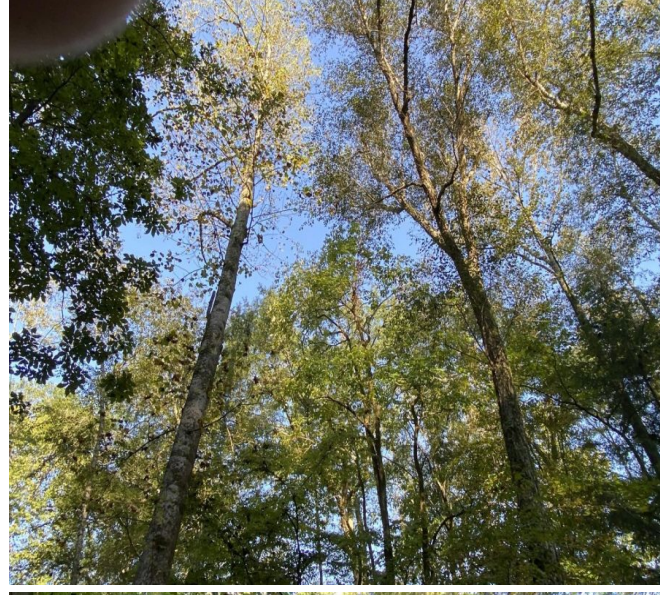
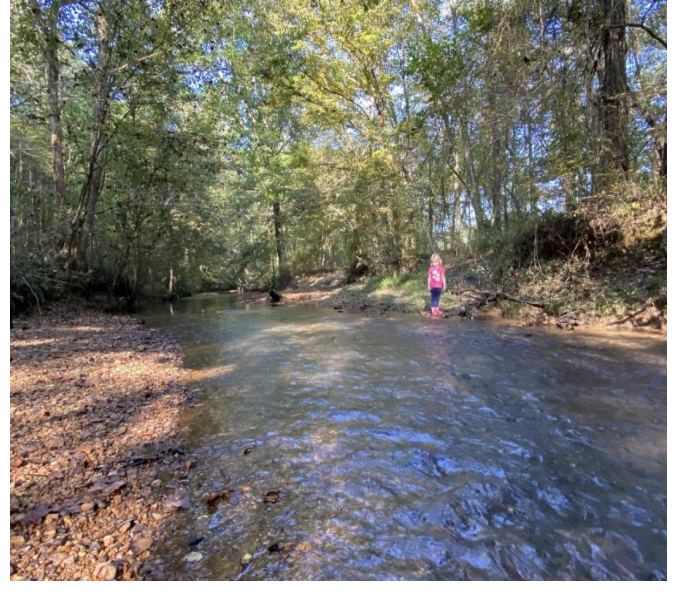
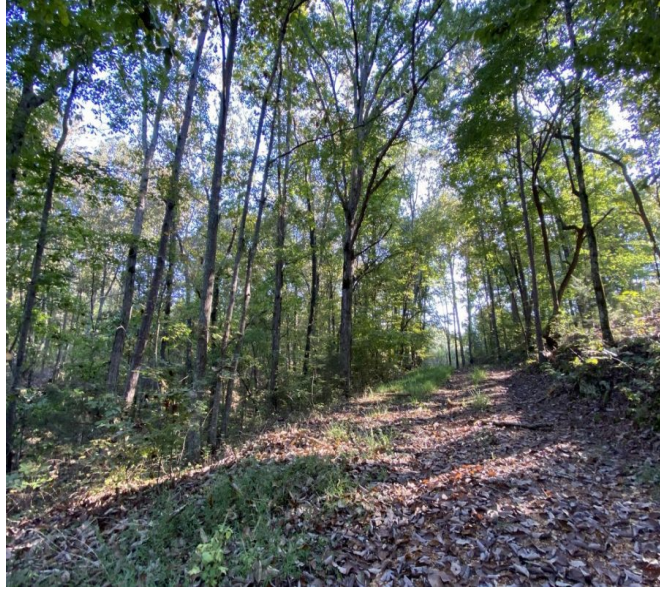
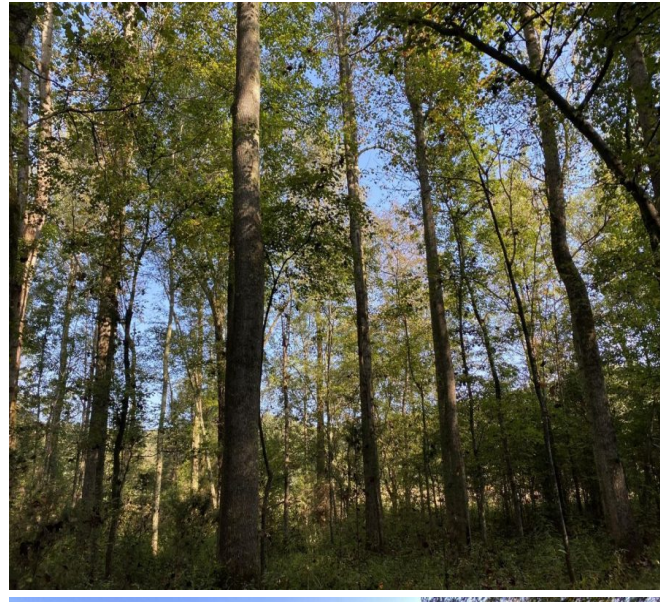
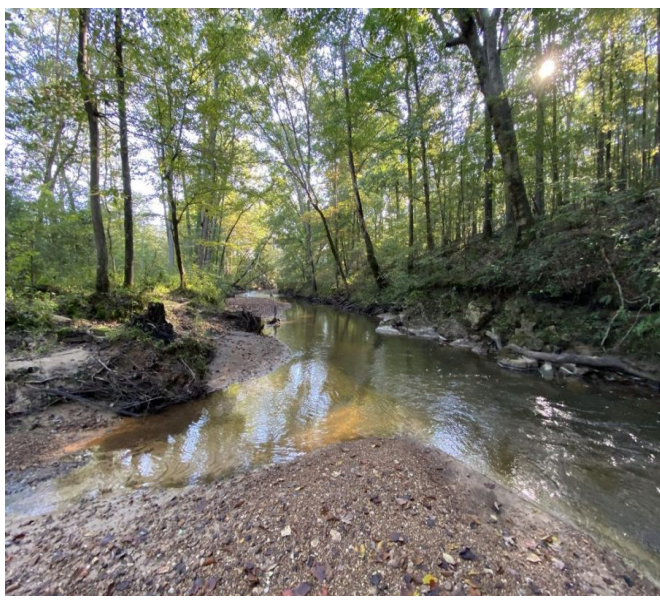
This rural property is conveniently located just 1/2 mile off US Highway 72 near the Mississippi / Alabama state line, however its seclusion and privacy feel like you are in the middle of nowhere. If peace and quiet is one of your goals for a rural property this might just be the property you are looking for! Boasting of over 2,700 feet along Pennywinkle Creek on a dead end county road the property is great for recreational activities, such as hiking, trail riding, hunting for deer, turkey, and small game, or just getting away from the hustle and bustle of town. The land is primarily mature hardwood timberland with gently rolling topography and flat pastureland. There is an old house located on the property with utilities present.

Launch your boat on the beautiful Tennessee River and enjoy other recreational activities on TVA land less than 2 minutes from this property. 30 minutes to Muscle Shoals, AL or Corinth, MS.

Shown by appointment only. Call/Text Nathan McCollum at 256-345-0074 for additional information.

82.00 Acres  
Colbert County  
GPS 34.754 X -88.0995

Mossy Oak Properties Southeast Land & Wildlife  
[www.selandandwildlife.com](http://www.selandandwildlife.com)



82.00 Acres  
Colbert County  
GPS 34.754 X -88.0995

Mossy Oak Properties Southeast Land & Wildlife  
[www.selandandwildlife.com](http://www.selandandwildlife.com)



82.00 Acres  
Colbert County  
GPS 34.754 X -88.0995

Mossy Oak Properties Southeast Land & Wildlife  
[www.selandandwildlife.com](http://www.selandandwildlife.com)