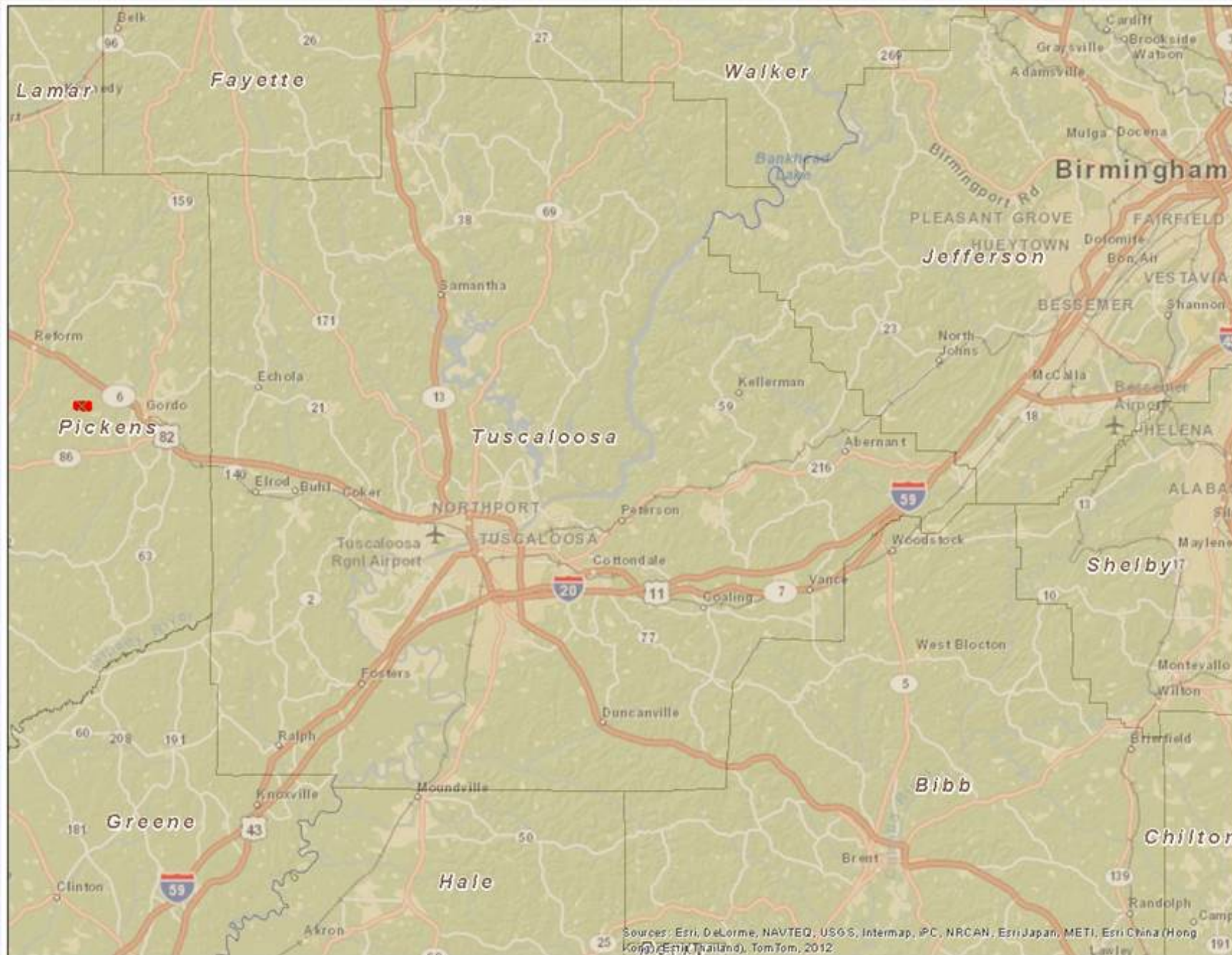




Timberland Close to Tuscaloosa



Property Details:

Price : \$229,800

County : Pickens

Acreage : 120.00

Address :

MOPLS ID : 19710

Located less than 20 minutes from Tuscaloosa this property is the perfect timberland investment and recreational tract if you live in the Tuscaloosa area. Pickens County is known for producing some of the top bucks in the state. With several green fields, this place is sure not to disappoint.

The pine timber has been recently thinned by a professional thinning crew and looks fantastic. Upon exiting the property, they improved the main road system; elevating the road, laying gravel where needed, and providing plenty of water turnouts.

Get the best of both worlds with this tract.

Other Important Information:

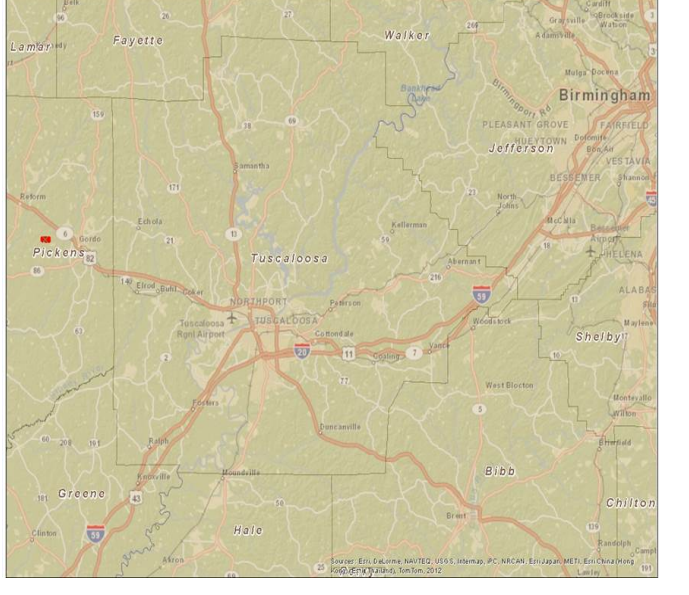
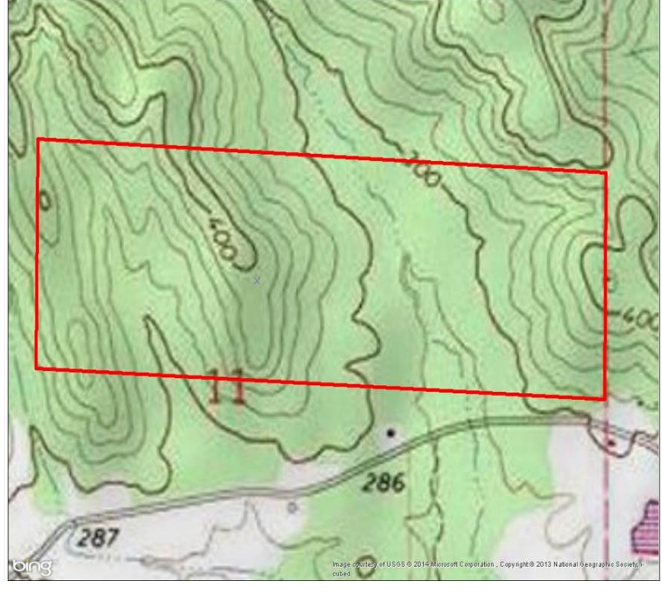
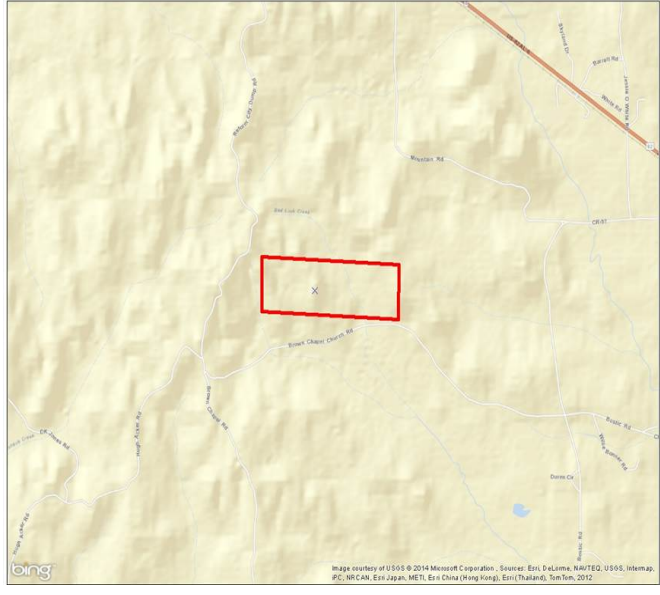
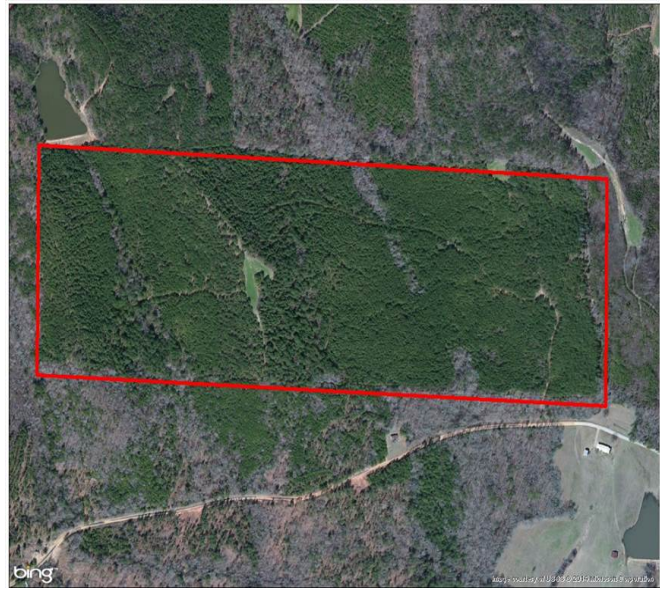
Taxes are approximately \$233.00 annually

Showing by Appointment Only. For a private showing or additional information, please contact Nathan McCollum at 256-345-0074 or email at nmccollum@mossyoakproperties.com. We look forward to speaking with you.

mixed use recreational, timberland, turkey, whitetail deer,

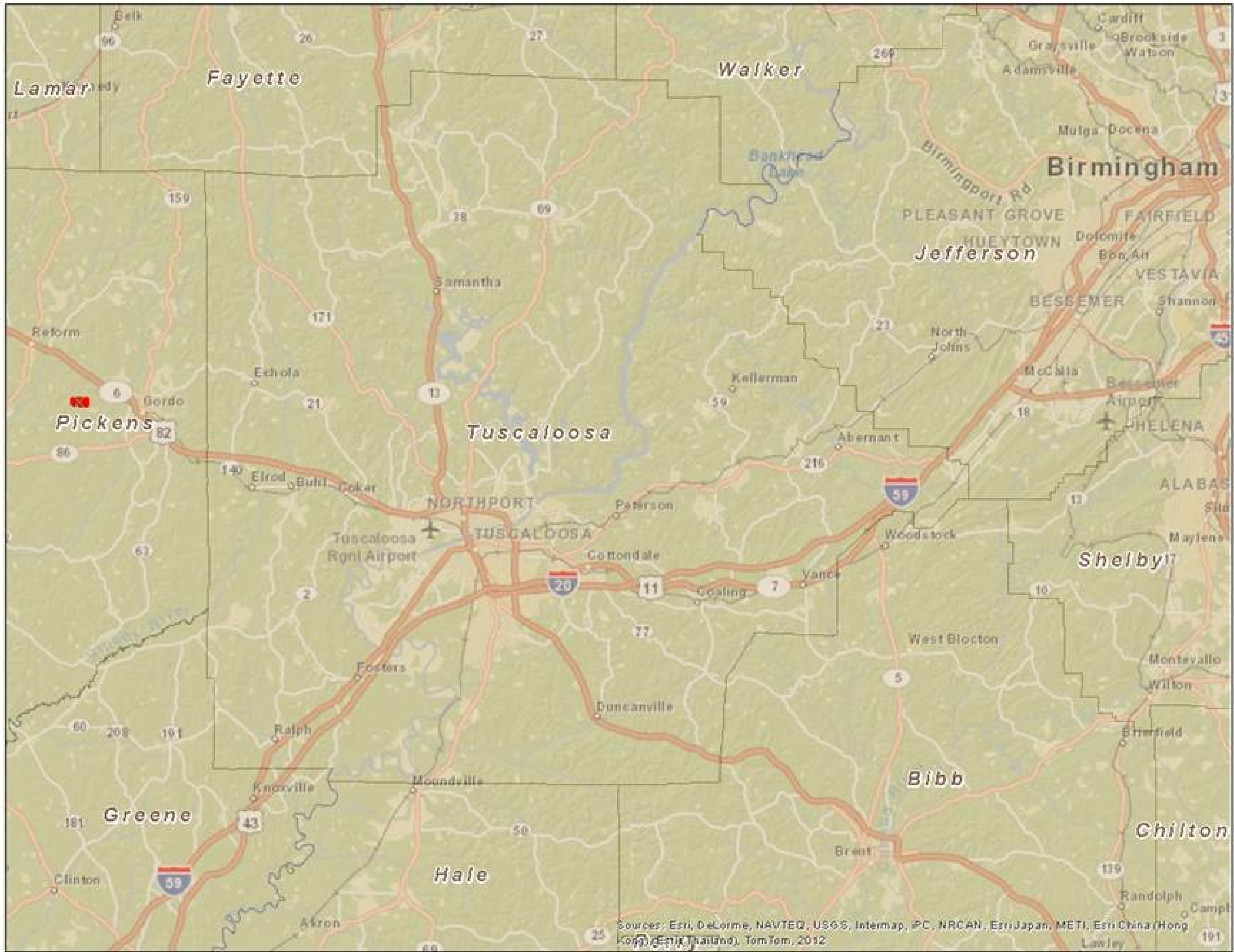
120.00 Acres
Pickens County
GPS 33.3273 X -87.9620

Mossy Oak Properties Southeast Land & Wildlife
www.selandandwildlife.com



120.00 Acres
Pickens County
GPS 33.3273 X -87.9620

Mossy Oak Properties Southeast Land & Wildlife
www.selandandwildlife.com



120.00 Acres	Mossy Oak Properties Southeast Land & Wildlife
Pickens County	www.selandandwildlife.com
GPS 33.3273 X -87.9620	