



**Property Details:**

Price : \$330,000

County : Winston

Acreage : 232.53

Address :

MOPLS ID : 39164

ID: 8029

Winston County, AL

232.53 Acres

Asking \$330,000 (\$1,419 per acre)

Looking for an end-of-the-road setting? This timberland/recreational tract is surrounded on three sides by hard to access Bankhead National Forest land and offers very good road service. Brush Creek meanders through the northwest corner. The timber is ready to be thinned and it is convenient to Decatur and Cullman, Alabama!

**Summary**

122 acres of unthinned loblolly pine

52 acres of 11-year-old loblolly pine

30 acres of hardwood

Remaining acreage in roads, fields, and utility right-of-ways

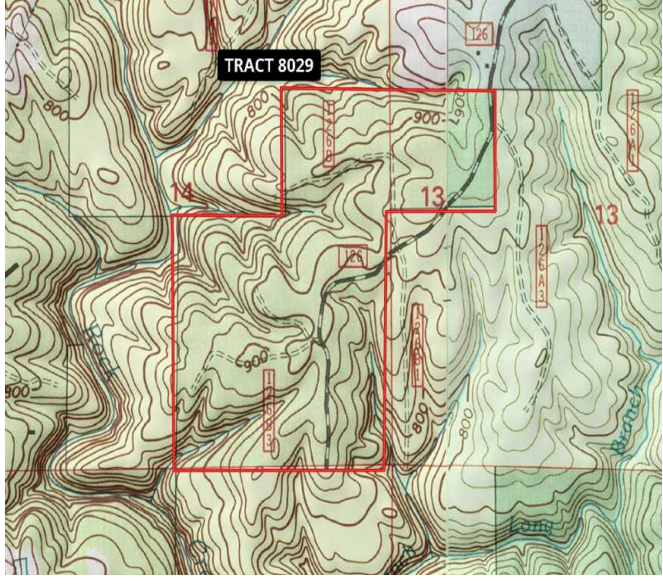
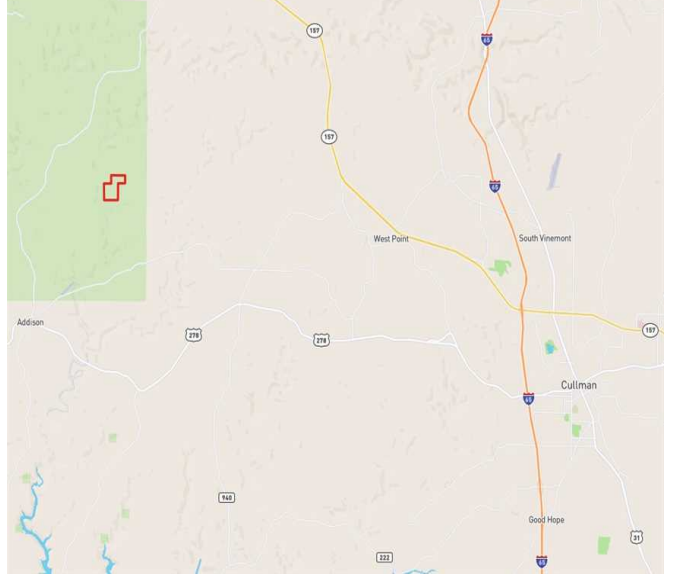
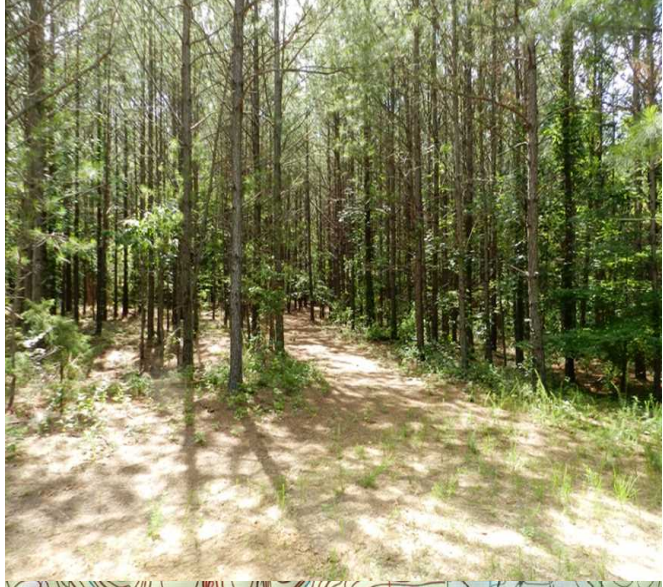
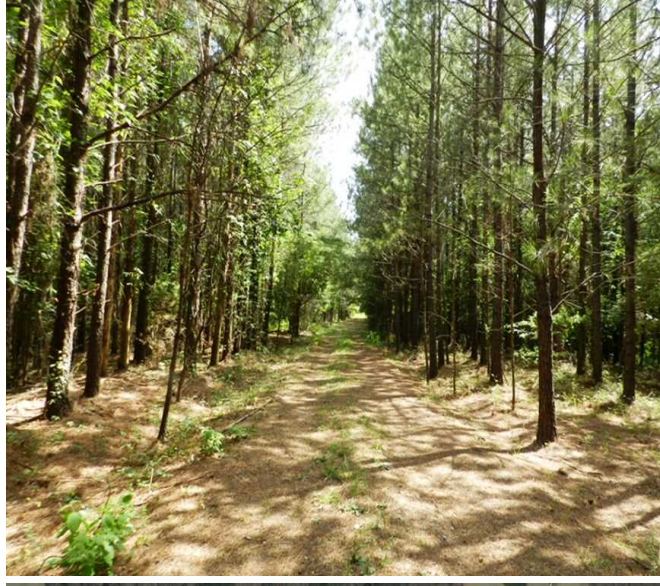
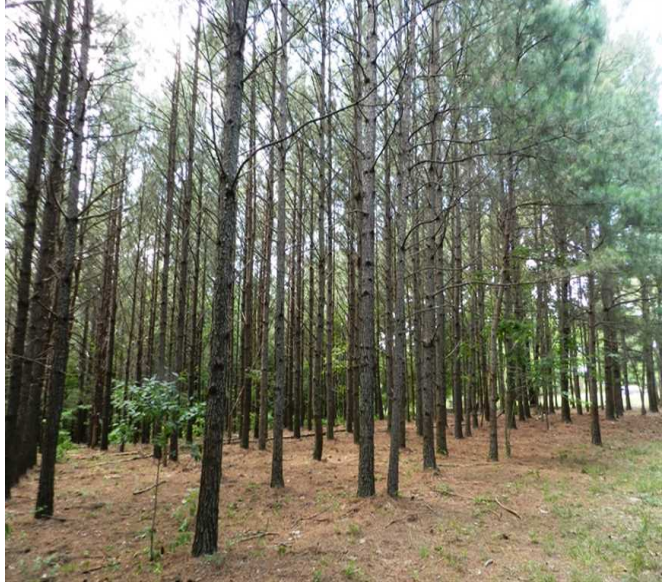
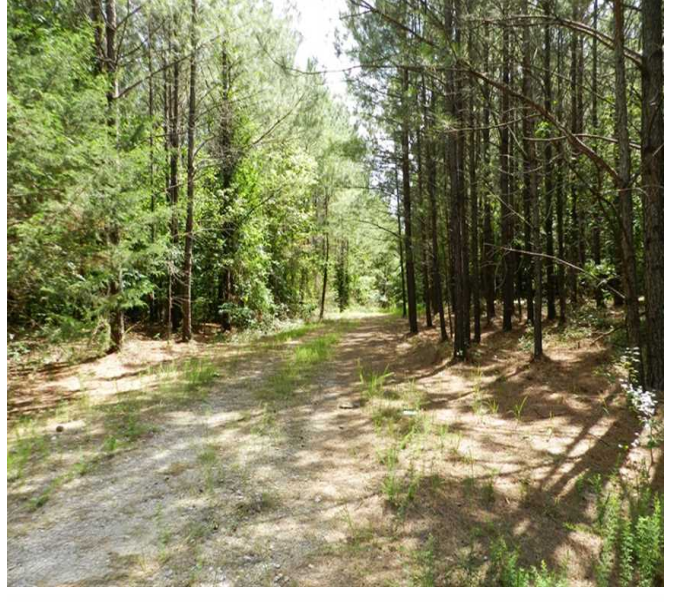
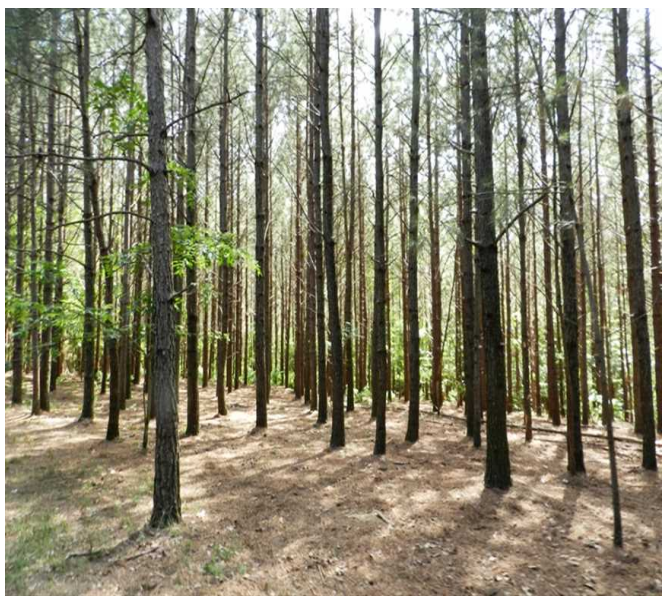
Neither MOP-Southeast Land & Wildlife LLC nor the Seller(s) provide any warranties or guaranties, expressed or implied as to the accuracy of the information provided. The maps and property description are an approximate representation of the property and should not be viewed as a survey or timber appraisal.

For more information or to schedule an appointment to view the property, call Nathan McCollum at (256) 345-0074 or email [nmccollum@mossyoakproperties.com](mailto:nmccollum@mossyoakproperties.com). We look forward to speaking with you.

232.53 Acres  
Winston County  
GPS 34.2660 X -87.1241

Mossy Oak Properties Southeast Land & Wildlife  
[www.selandandwildlife.com](http://www.selandandwildlife.com)





232.53 Acres  
Winston County  
GPS 34.2660 X -87.1241

Mossy Oak Properties Southeast Land & Wildlife  
[www.selandandwildlife.com](http://www.selandandwildlife.com)





232.53 Acres  
Winston County  
GPS 34.2660 X -87.1241

Mossy Oak Properties Southeast Land & Wildlife  
[www.selandandwildlife.com](http://www.selandandwildlife.com)