



**Property Details:**

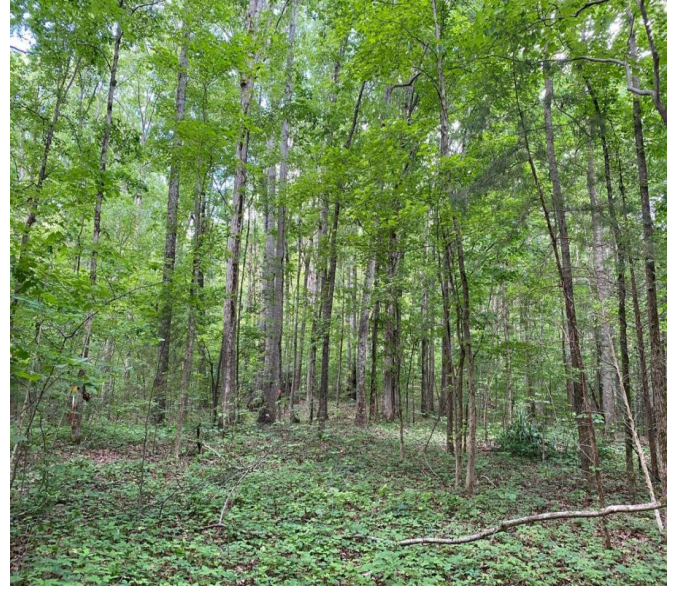
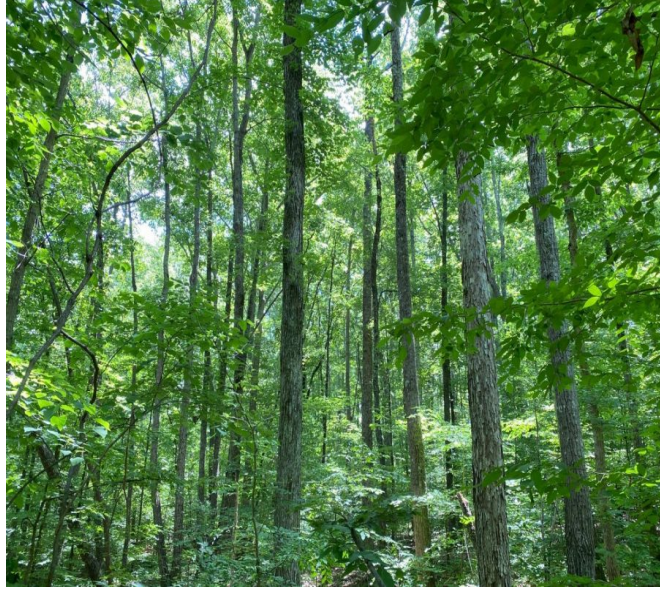
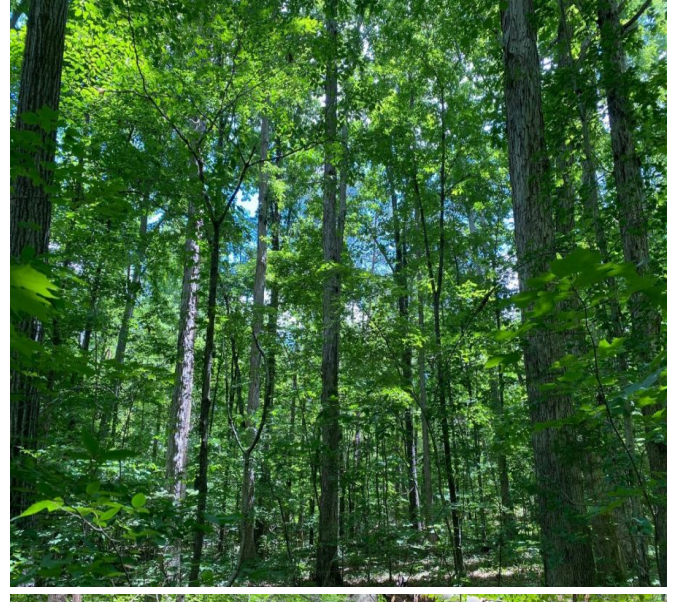
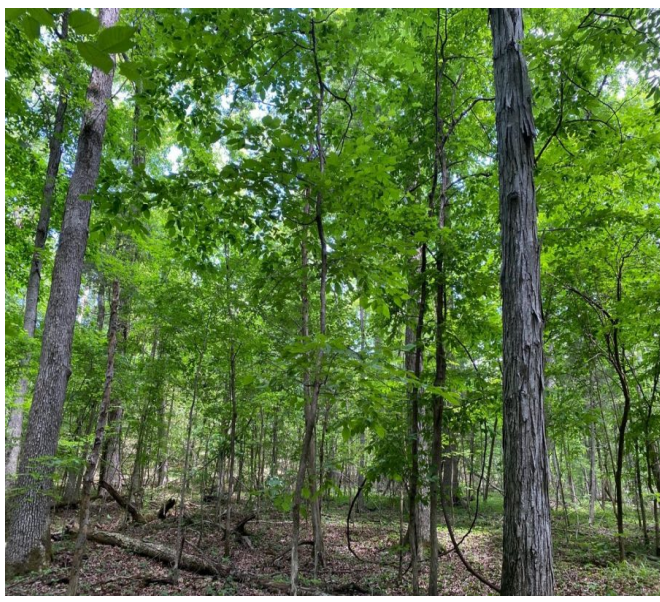
Price : \$59,900  
County : Lawrence  
Acreage : 10.00  
Address : CR 303  
MOPLS ID : 29231

Ten acres of mature hardwood timber joining Bankhead National Forest. This property has deeded access from a 30 foot wide easement into the southeast corner from County Road 303 and is located just south of Mount Hope, Alabama. The east side of the property is generally flat providing a great location for a future home or cabin, power is available at the road. Heading west across the property you rise in elevation leading up to the headwaters of a small creek that flows into this tract. Joining Bankhead National Forest on both the southern and western borders this property provides great access to tens of thousands of acres of renown hunting, hiking, and horseback riding that Bankhead is known for. This tract is made up entirely of mature hardwood timber, heavy to white oak, and could be a great small timber investment.

This one won't last long. Call or text Austin Littrell today at 256-460-1875 for more information or to schedule a private showing.

10.00 Acres  
Lawrence County  
GPS 34.4096 X -87.4906

Mossy Oak Properties Southeast Land & Wildlife  
[www.selandandwildlife.com](http://www.selandandwildlife.com)



10.00 Acres  
Lawrence County  
GPS 34.4096 X -87.4906

Mossy Oak Properties Southeast Land & Wildlife  
[www.selandandwildlife.com](http://www.selandandwildlife.com)



10.00 Acres  
Lawrence County  
GPS 34.4096 X -87.4906

Mossy Oak Properties Southeast Land & Wildlife  
[www.selandandwildlife.com](http://www.selandandwildlife.com)