



**Property Details:**

Price : \$334,650

County : Lawrence

Acreage : 133.86

Address : Wren, AL

MOPLS ID : 43941

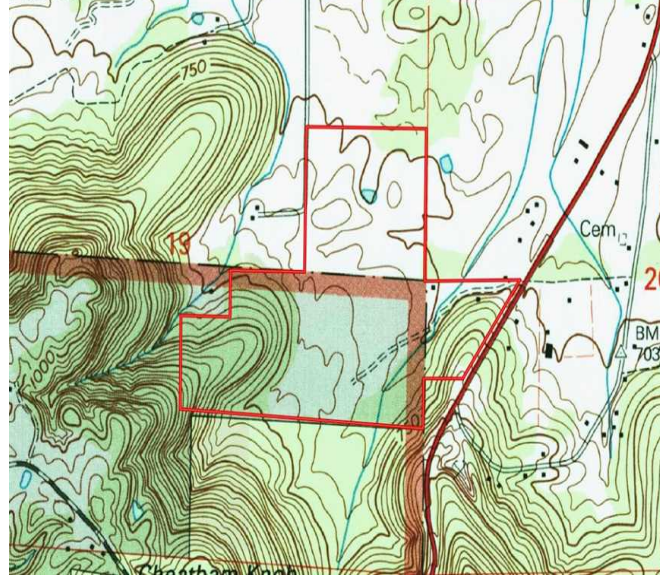
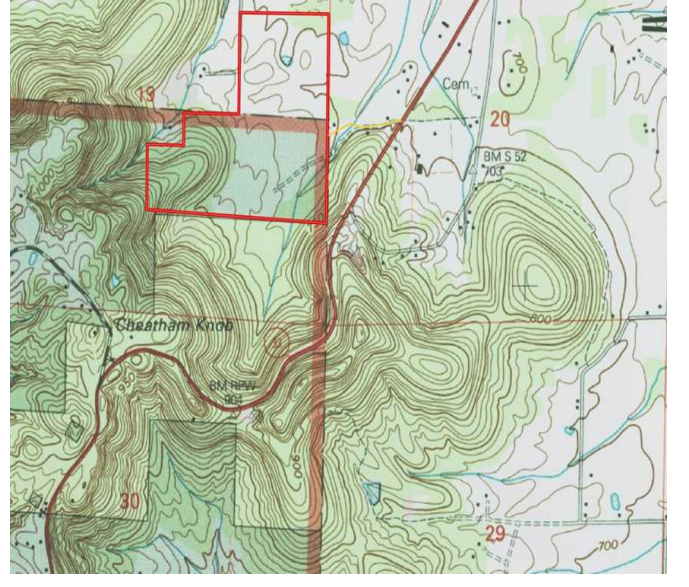
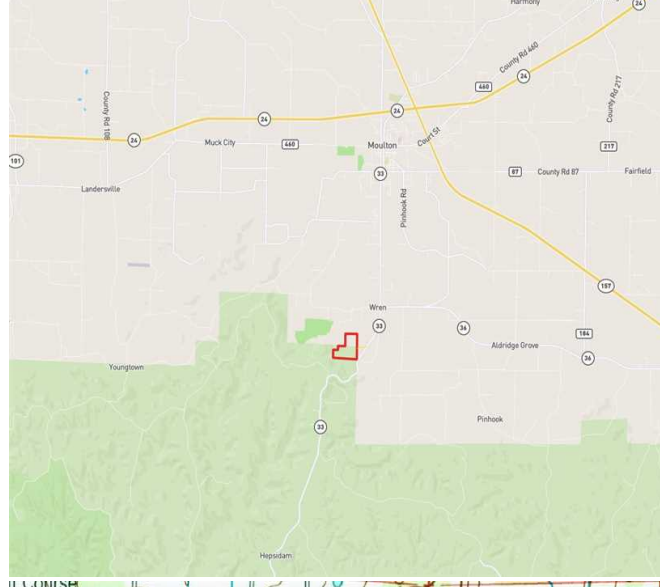
Located just 5 minutes from Moulton and 20 minutes from Decatur, Alabama, this 119 acre tract has 46 acres of good timber with the balance in pasture land that has been fenced and cross fenced. The property joins the historical Bankhead National Forest for 1/2 mile. It is secluded, affords opportunities for great home sites, and is a very attractive tract with utilities present. Located in Sections 19 & 20, T7S, R7W. Access is via a 30 foot easement leading to Highway 33. A Timber Inventory is in process and will be made available to prospective buyers by request. This is a beautiful property with a small pond and utilities.

Asking \$334,650 or \$2,500 per acre

For more information or to schedule an appointment to view the property, call Nathan McCollum at (256) 345-0074 or email [nmccollum@mossyoakproperties.com](mailto:nmccollum@mossyoakproperties.com).

133.86 Acres  
Lawrence County  
GPS 34.4224 X -87.2983

Mossy Oak Properties Southeast Land & Wildlife  
[www.selandandwildlife.com](http://www.selandandwildlife.com)



133.86 Acres  
Lawrence County  
GPS 34.4224 X -87.2983

Mossy Oak Properties Southeast Land & Wildlife  
[www.selandandwildlife.com](http://www.selandandwildlife.com)



133.86 Acres  
Lawrence County  
GPS 34.4224 X -87.2983

Mossy Oak Properties Southeast Land & Wildlife  
[www.selandandwildlife.com](http://www.selandandwildlife.com)