

## SOLD!! 15+/- Acres Bordering Bankhead with Cabin



### Property Details:

Price : \$99,900

County : Lawrence

Acreage : 15.00

Address : 3399 County Road 81

MOPLS ID : 24598

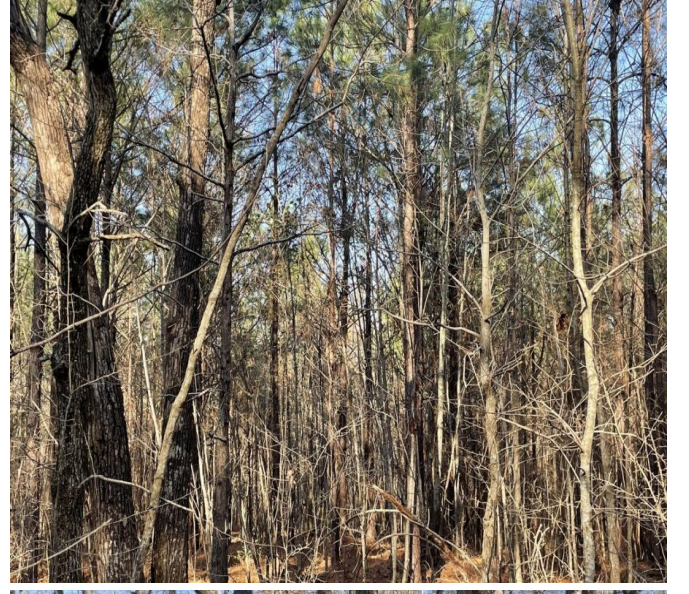
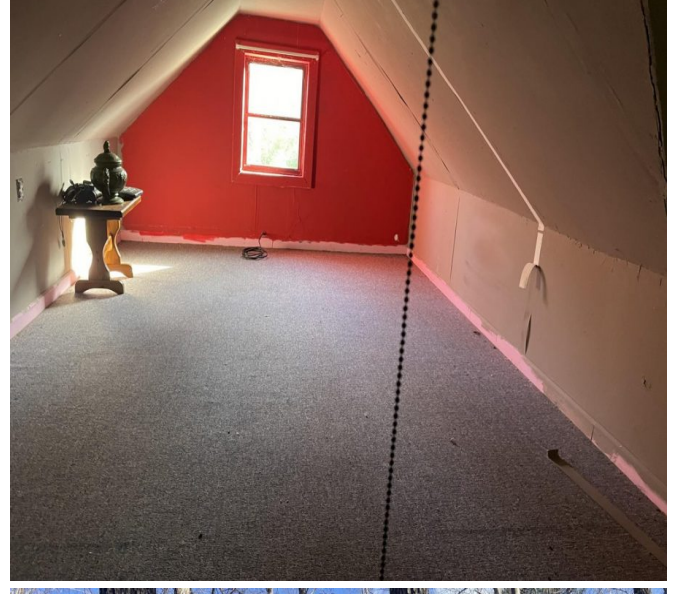
Here is a perfect opportunity for horse riders and hunting enthusiasts with an option for generating income by establishing an Airbnb or if you prefer, make it your very own private weekend retreat. You will find this awesome chance bordering the historic Bankhead National Forest in Lawrence County, Alabama.

These 15 acres are comprised of wooded areas, with a mix of flat and rolling terrain. A 1,024 SF log cabin with power, water, and septic is included. The log cabin was built in 1996. With a little refreshing, the cabin would make a nice equestrian operation as an Airbnb, or a perfect private recreational retreat complimented by the horse stable situated nicely near horse trails with access to thousands of acres of public hunting. Excellent access via County Road 81.

Located 20 min to Moulton and Hartselle, 30 min to Decatur and Cullman, and 50 min to Huntsville. Do not let this rare opportunity pass you by! Contact Jim Greene at 256-227-4869.

15.00 Acres  
Lawrence County  
GPS 34.3878 X -87.1848

Mossy Oak Properties Southeast Land & Wildlife  
[www.selandandwildlife.com](http://www.selandandwildlife.com)



15.00 Acres  
Lawrence County  
GPS 34.3878 X -87.1848

Mossy Oak Properties Southeast Land & Wildlife  
[www.selandandwildlife.com](http://www.selandandwildlife.com)



15.00 Acres  
Lawrence County  
GPS 34.3878 X -87.1848

Mossy Oak Properties Southeast Land & Wildlife  
[www.selandandwildlife.com](http://www.selandandwildlife.com)