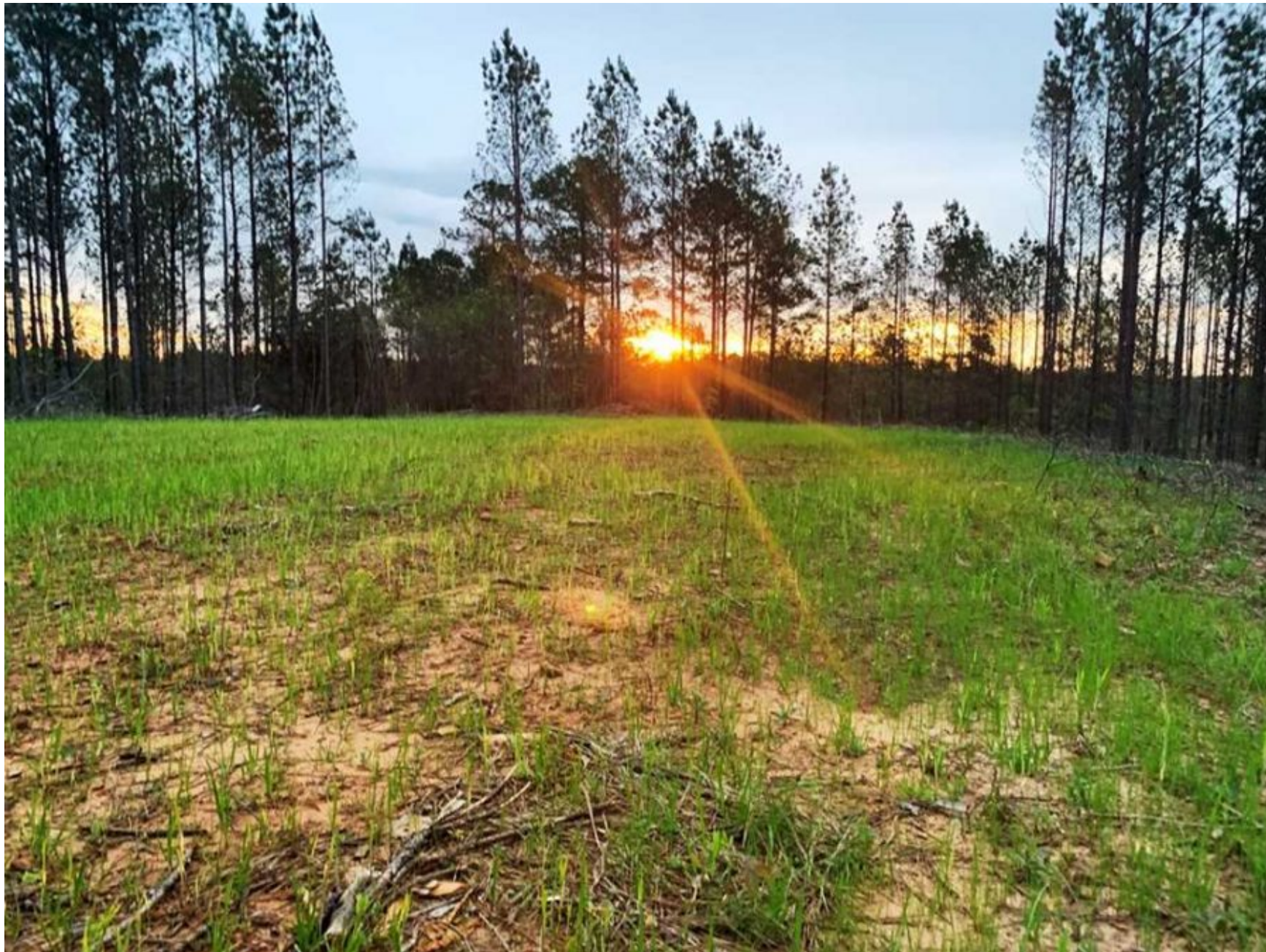


198 Acres Hunting Land Joining Bankhead National Forest in Winston County, AL



Property Details:

Price : \$299,000

County : Winston

Acreage : 198.00

Address : Hickory Grove Rd.

MOPLS ID : 53407

This is a unique opportunity to own an excellent recreational tract of timber bordering the Bankhead National Forest. This tract is conveniently located less than an hour from Decatur and Cullman, and less than 5 miles to the Grayson Lumber Mill. It also sits right outside the Black Warrior Management Area, which is known for trophy whitetail deer and a healthy population of turkey. With four green fields, several hardwood draws, and a powerline clearing, there are multiple opportunities to hunt deer and turkey. There is also municipal water and electricity available, as well as several potential building sites, allowing the buyer multiple opportunities to build.

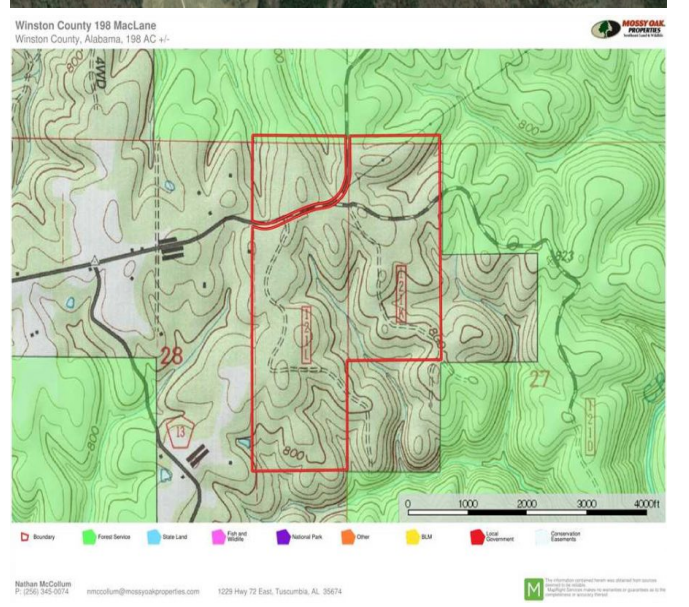
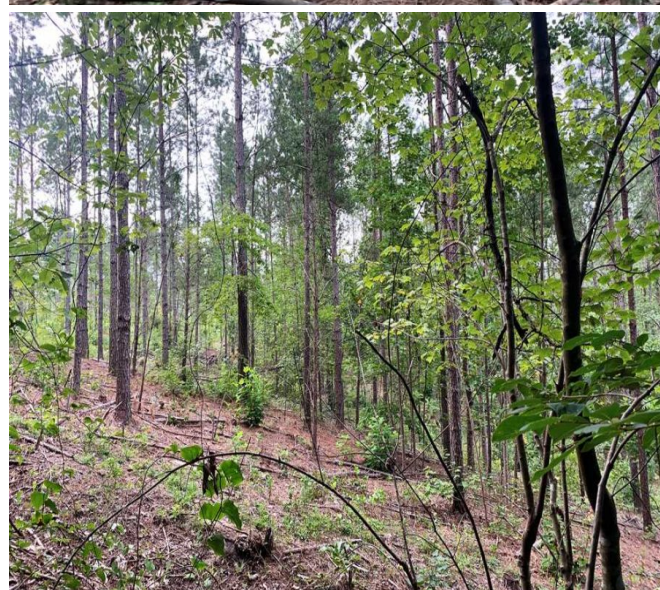
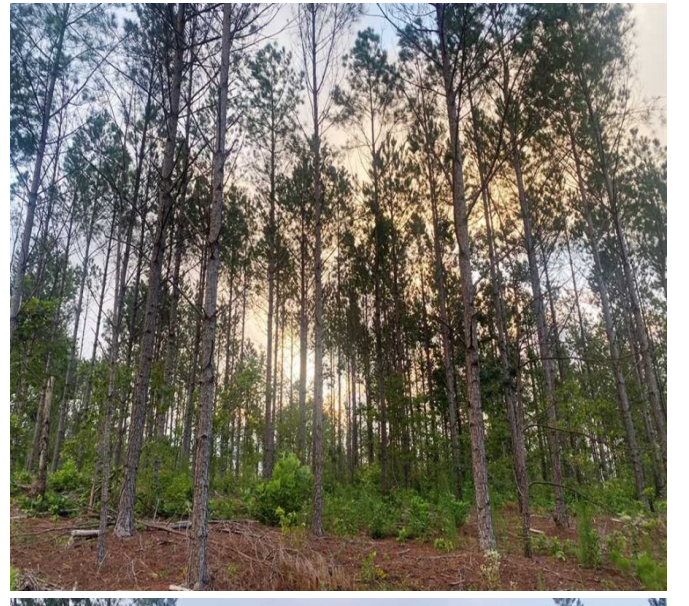
This tract is also a great timber investment. The plantation pine on this tract has been professionally managed over the years. With 138 acres of 17 year old thinned pines, 51 acres of 26 year old thinned pines, this tract will give the buyer a good stream of income.

Shown by APPOINTMENT ONLY. For additional information or to set up a time to view the property, call Jim Greene at (256) 227-4869 or email jgreene@mossyoakproperties.com.

It gives us great pleasure at Mossy Oak Properties Southeast Land & Wildlife LLC to work with outdoor enthusiasts who understand and value the beauty of one of God's creations—the land—an asset it takes a lifetime to develop. Our team has a unique team of professionals with 70 years of combined experience in land brokerage and timber management. By investing in our clients and their properties, we are not just selling property, we are building lifelong friendships. Let us help you "Find Your Favorite Place."

198.00 Acres
Winston County
GPS 34.2385 X -87.2704

Mossy Oak Properties Southeast Land & Wildlife
www.selandandwildlife.com



198.00 Acres
Winston County
GPS 34.2385 X -87.2704

Mossy Oak Properties Southeast Land & Wildlife
www.selandandwildlife.com



198.00 Acres
Winston County
GPS 34.2385 X -87.2704

Mossy Oak Properties Southeast Land & Wildlife
www.selandandwildlife.com