



Property Details:

Price : \$375,200

County : Colbert

Acreage : 268.00

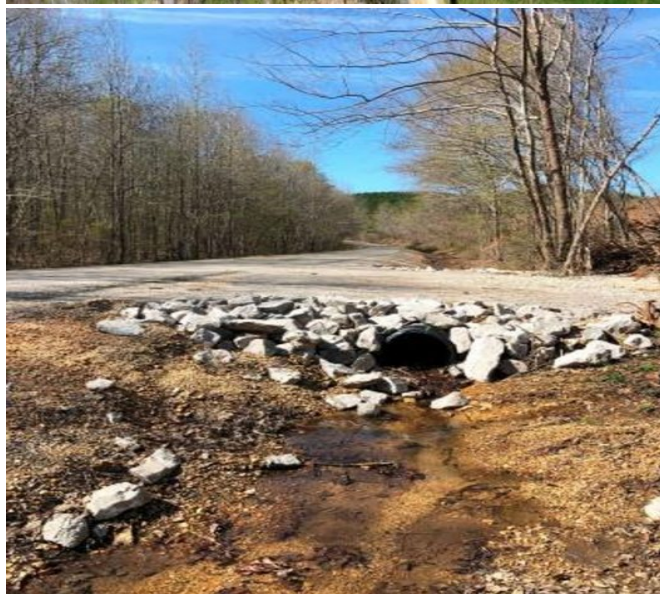
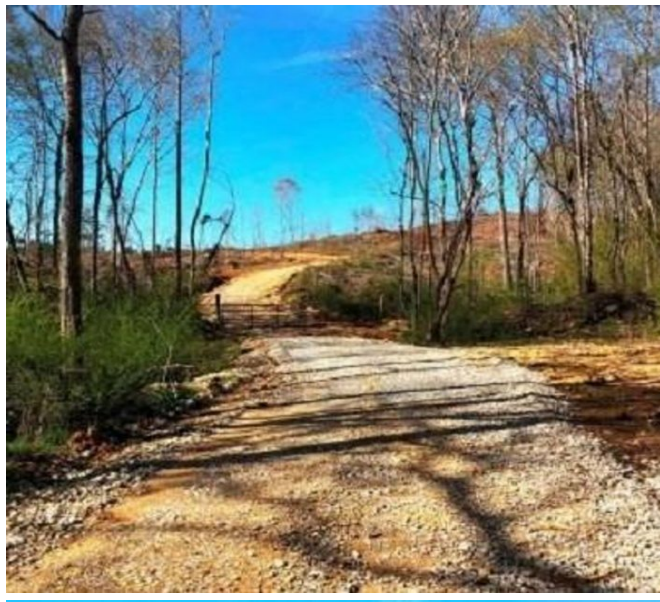
Address :

MOPLS ID : 20614

A very unique tract just North of Cherokee Alabama and South of the banks of the Tennessee River in Colbert County, AL. With over 6,200 feet of road frontage on Riverton Rose Trail Road, the opportunities are wide open to make your own recreational getaway. The timber was recently harvested on the ridges but there is plenty of timber left along the hollows and streams for the wildlife to migrate in and through. If you are looking for a gravel/chert pit, then this tract will have all of it you will ever need. The gravel on this tract was used to construct a network of roads throughout and it is some of the best there is for building roads and foundations. For more information or to schedule an onsite visit, call /text Cameron Isbell at 256-483-8134.

268.00 Acres
Colbert County
GPS 34.834892 X -87.986677

Mossy Oak Properties Southeast Land & Wildlife
www.selandandwildlife.com



268.00 Acres
Colbert County
GPS 34.834892 X -87.986677

Mossy Oak Properties Southeast Land & Wildlife
www.selandandwildlife.com



268.00 Acres
Colbert County
GPS 34.834892 X -87.986677

Mossy Oak Properties Southeast Land & Wildlife
www.selandandwildlife.com