

356 Acres of Land for Sale near Bankhead Forest in Winston County, Alabama



Property Details:

Price : \$499,999

County : Winston

Acreage : 175.00

Address : Double Springs, AL

MOPLS ID : 42896

Bankhead National Forest Timber and Hunting Tract
Winston County, AL | 356 +/- Acres | \$499,000

Exceptional residential, hunting or recreational tract in beautiful Winston County, AL.

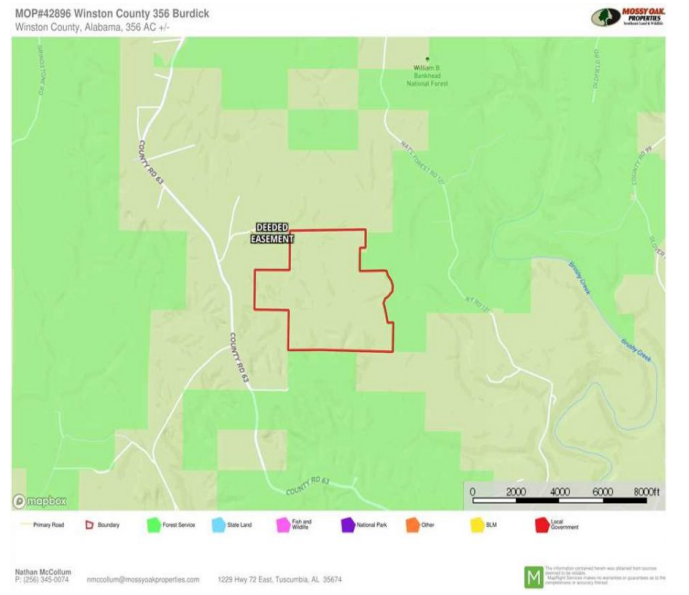
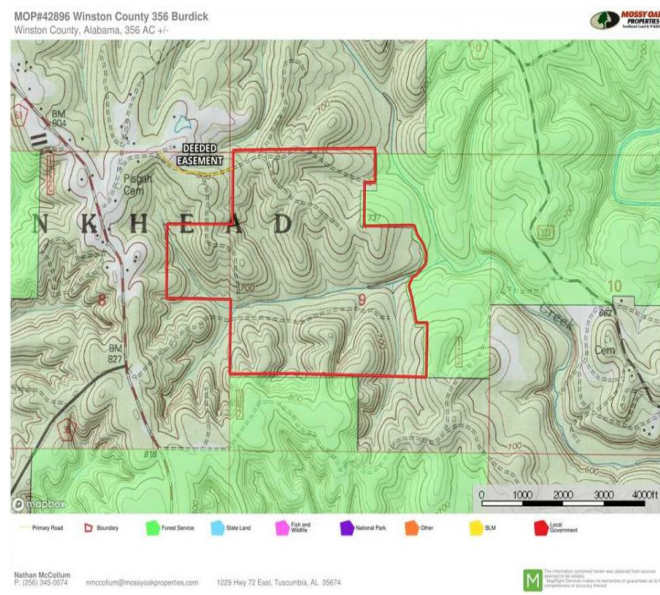
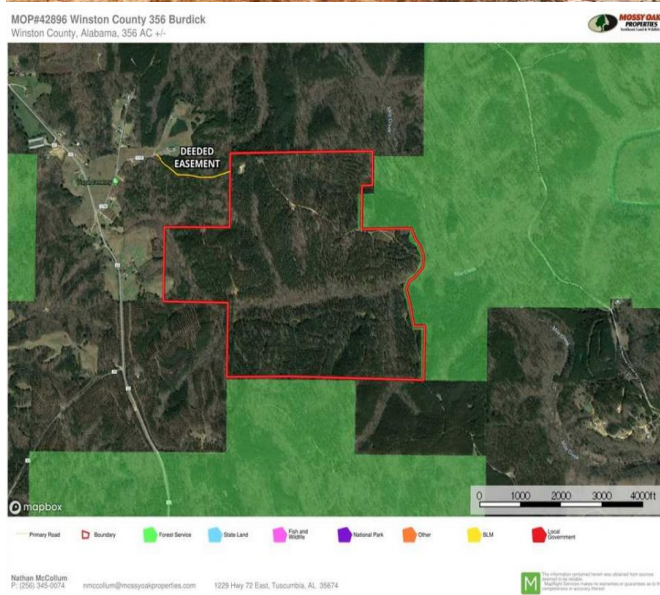
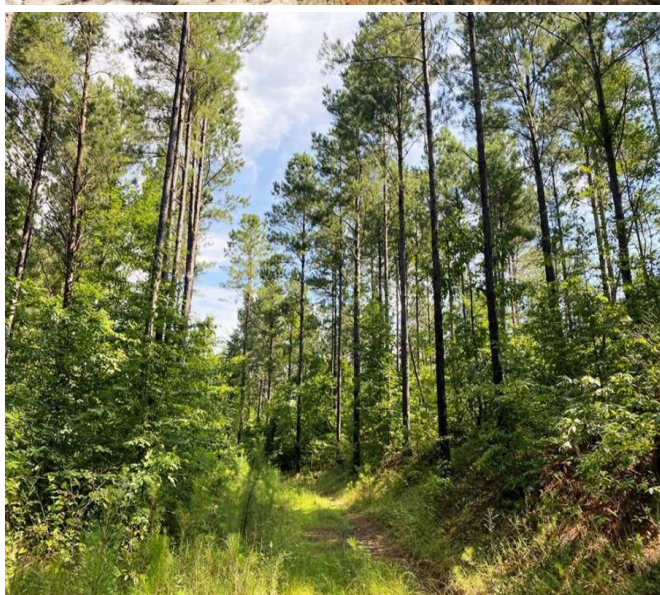
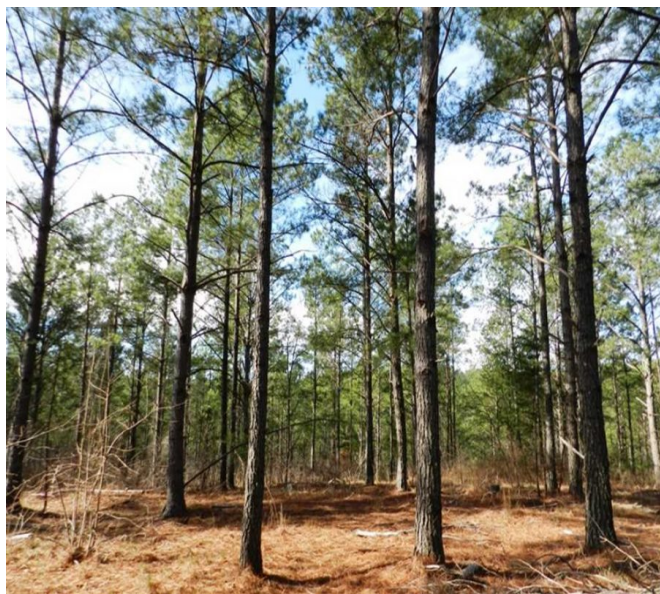
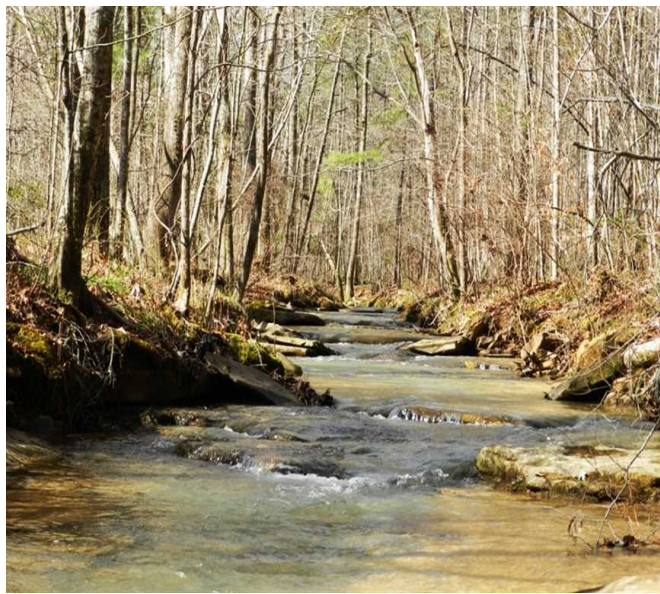
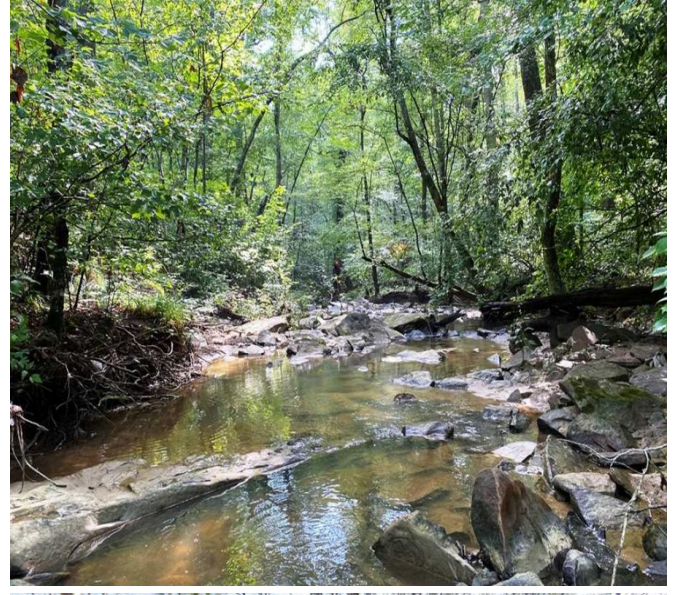
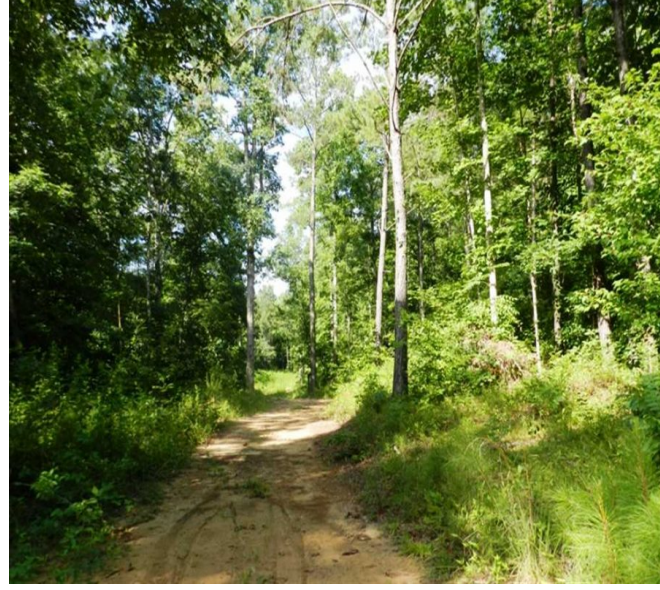
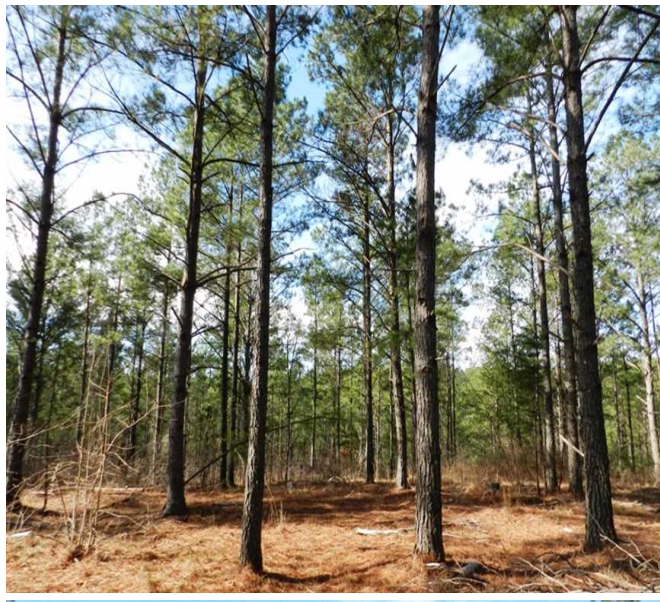
- Short distance to major cities
- Abundant Wildlife, Deer, Turkey, and Small Game hunting
- Excellent trail system

Convenient to County Road 63 with easy access to Cullman and Decatur. This large acreage property is truly one of a kind. The tract is characterized by thinned pine plantations with approximately 30 acres of mature hardwood timber, including white oaks and other hardwood species. Over 1.25 miles of common boundary with Bankhead National Forest that connects with two large national forest tracts. Food plots, five green fields, an established trail system, rolling topography, numerous year round creeks and branches fashion this excellent recreational place. The roads and trails further enhance hunting opportunities and provide ease of access to every corner of this property. Located approximately 30 minutes west of Cullman, 40 minutes southwest of Decatur and in close proximity to Smith Lake. Shown by appointment only! Call Nathan McCollum at (256) 345-0074 or email nmccollum@mossyoakproperties.com.

Bankhead National Forest is one of Alabamas four National Forests, covering 181,230 acres. It is home to Alabamas only National Wild and Scenic River, the Sipsey Fork. There are six recreation areas scattered about the Bankhead National Forest, each offering a unique experience of its own.

Smith Lake is among the top three cleanest lakes in the country and is the deepest lake in the state of Alabama with a max depth of over 260 feet. Across the landscape of this lake are mammoth rock embankments, ledges, marinas and much more.

Mossy Oak Properties Southeast Land & Wildlife LLC has a unique team of professionals with 70 years of combined experience in land brokerage and timber management. By investing in our clients and their properties, we are not just selling property, we are building lifelong friendships. Let us help you "Find Your Favorite Place."



175.00 Acres
Winston County
GPS 34.1969 X -87.2842

Mossy Oak Properties Southeast Land & Wildlife
www.selandandwildlife.com



175.00 Acres
Winston County
GPS 34.1969 X -87.2842

Mossy Oak Properties Southeast Land & Wildlife
www.selandandwildlife.com