

Just Reduced! 420 Acres of Timberland near Tuscumbia, Alabama



Property Details:

Price : \$499,000
County : Colbert
Acreage : 420.00
Address : Tuscumbia, AL
MOPLS ID : 28184

Just Reduced! This 420 acre timbered tract on top of the mountain is located just west of Colbert Heights in Colbert County, Alabama. There are stands of mature pine and hardwood throughout. Current owners have used the power line that crosses the property for food plots and stand locations. Excellent deer, turkey, and small game hunting opportunities, in addition to ATV trails, make this a great recreational/ timberland investment opportunity. Properties like this don't come along often so call Mark Palmer today at (256) 810-0902 or email mpalmer@mossyoakproperties.com. We look forward to speaking with you.

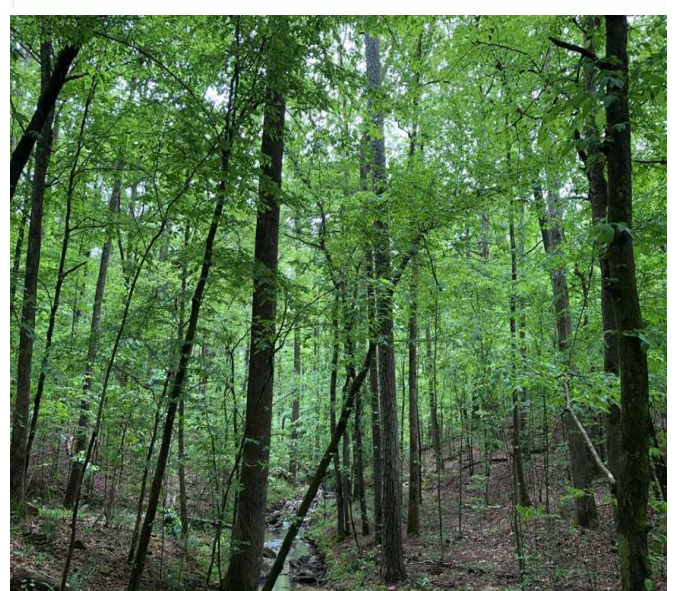
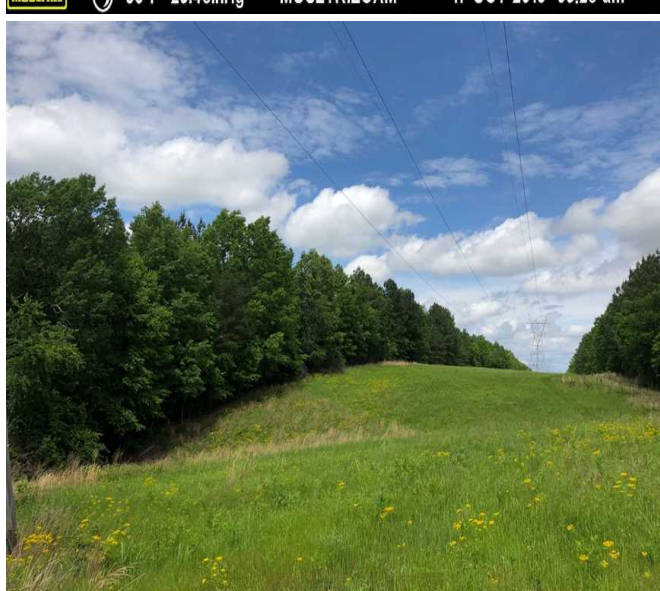
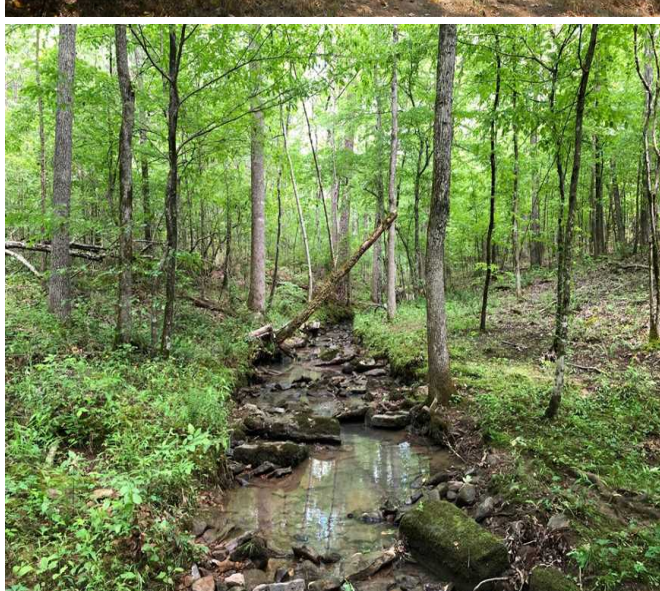
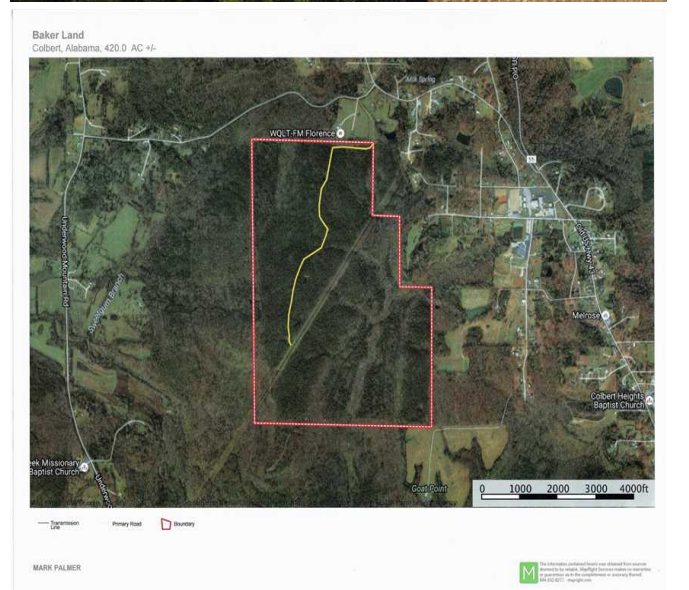
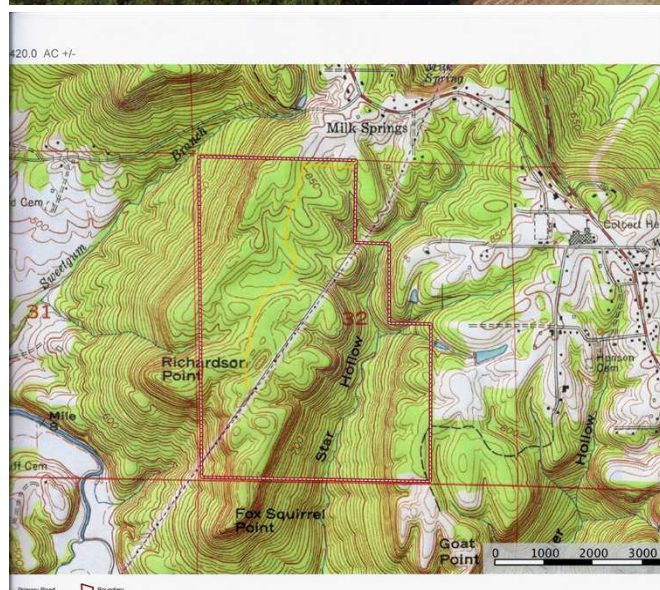
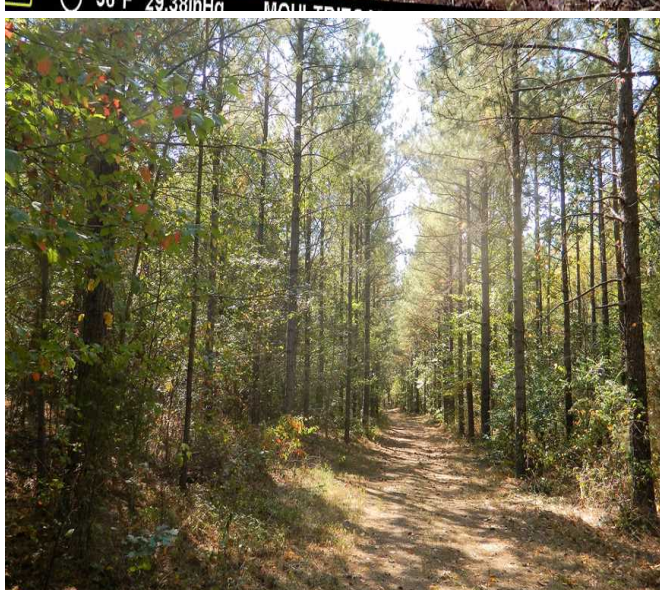
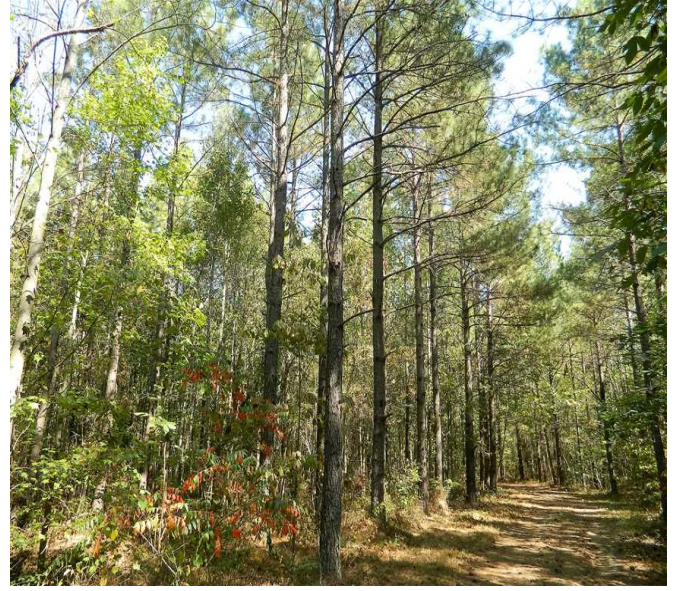
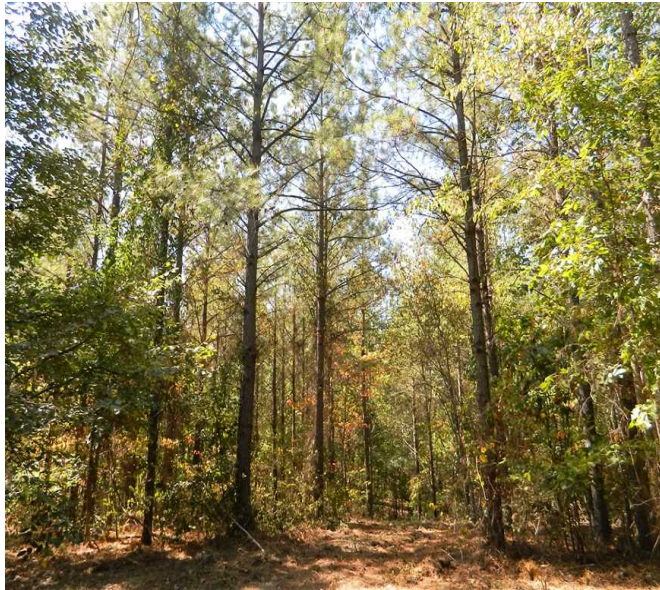
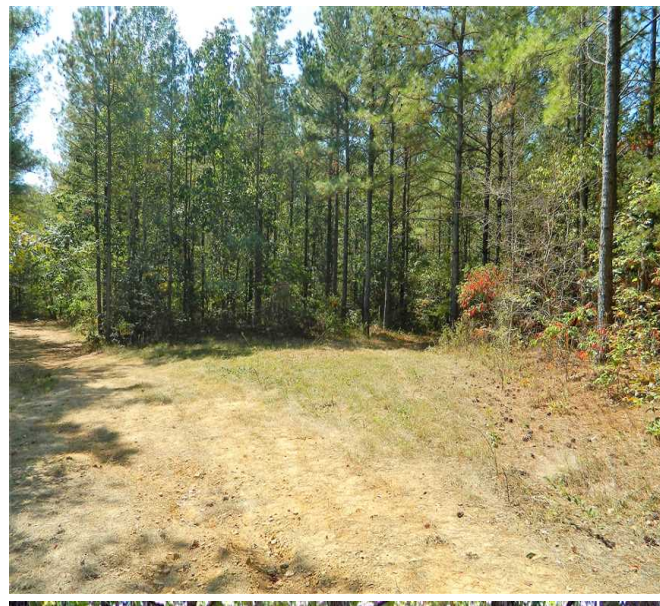
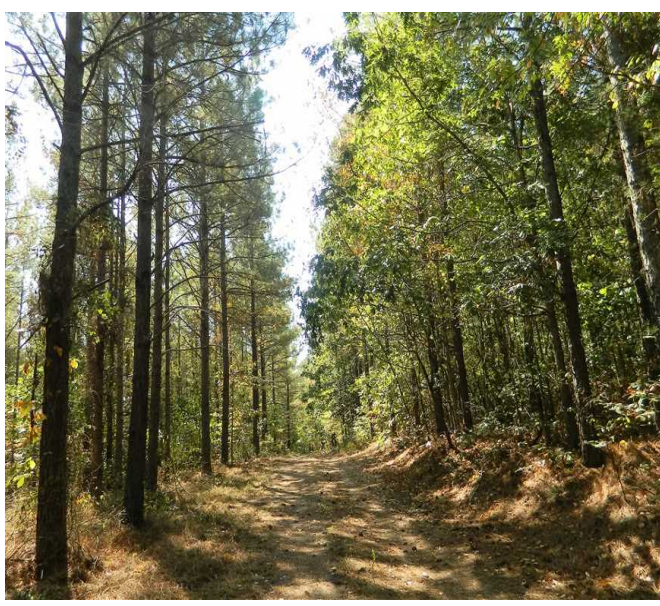
Additional information:

Video URL: <https://www.youtube.com/watch?v=owPqtkp8-58>

Map URL: <http://mapright.com/ranching/maps/3ebfla5668473fffa0200ba496631fbf/share>

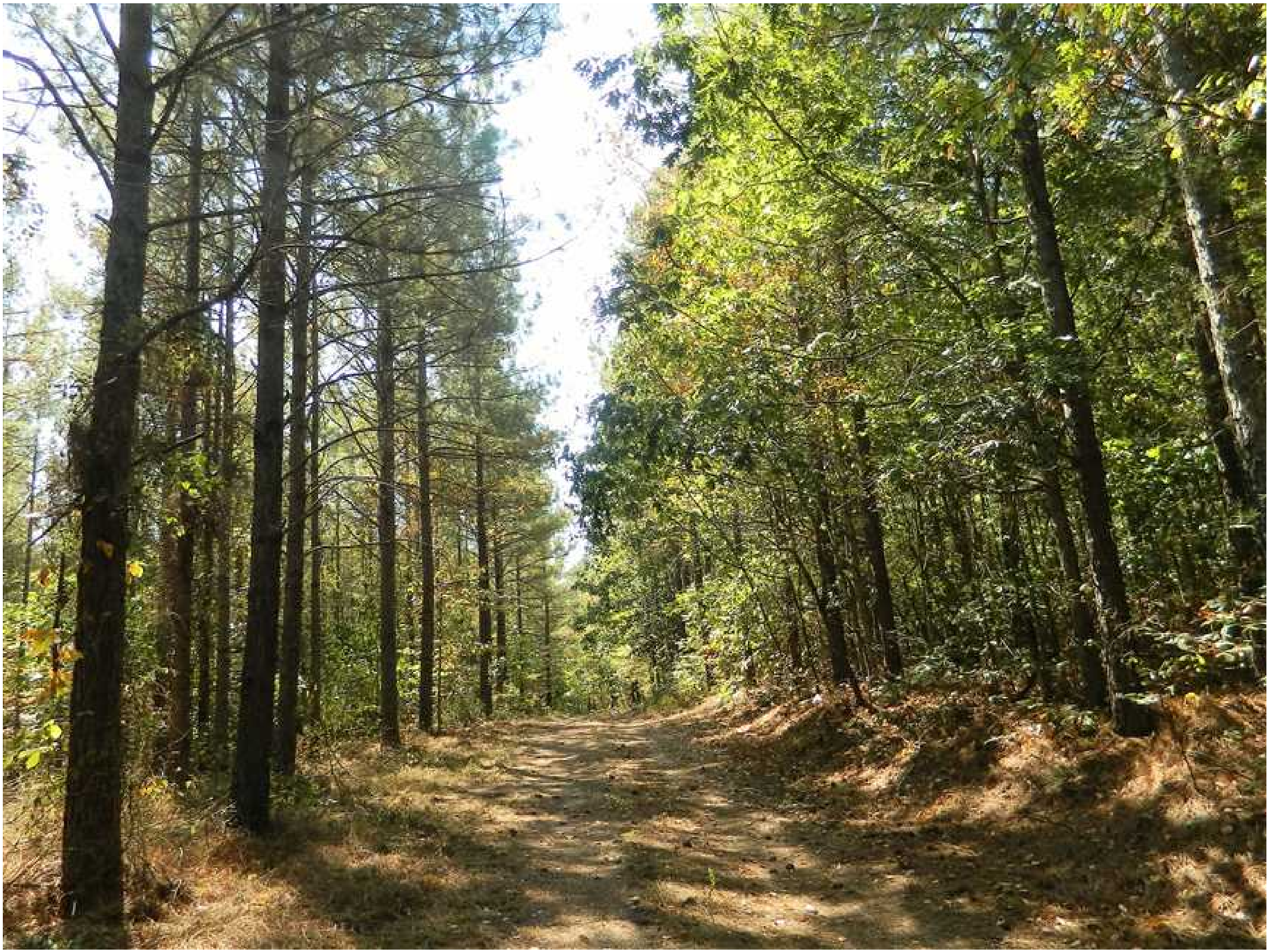
420.00 Acres
Colbert County
GPS 34.6728 X -87.7132

Mossy Oak Properties Southeast Land & Wildlife
www.selandandwildlife.com



420.00 Acres
Colbert County
GPS 34.6728 X -87.7132

Mossy Oak Properties Southeast Land & Wildlife
www.selandandwildlife.com



420.00 Acres
Colbert County
GPS 34.6728 X -87.7132

Mossy Oak Properties Southeast Land & Wildlife
www.selandandwildlife.com