

51.80 Acres Overlooking Country Side Near Huntsville



Property Details:

Price : \$199,000

County : Madison

Acreage : 51.80

Address :

MOPLS ID : 38418

This beautiful homesite/farm overlooking the countryside is located at the end of a quiet country road. 21.5 acres is in hardwood timber and the remaining 30 acres is open. There is county water to this tract as well as a small branch running through the property. Less than 20 minutes to Huntsville this property located in an upscale area is perfect for farm living and working in town. Deer, turkey, and other wildlife are plentiful! This tract can be combined with an additional 155-acre tract located across the road (see MOP#38420).

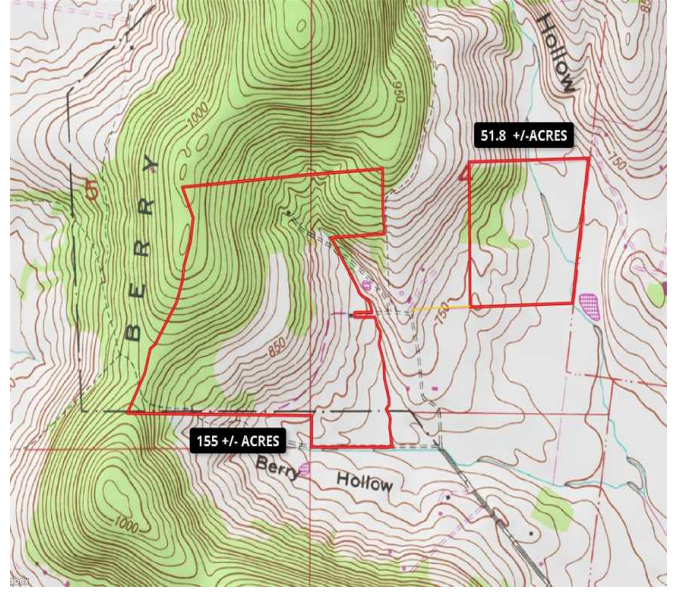
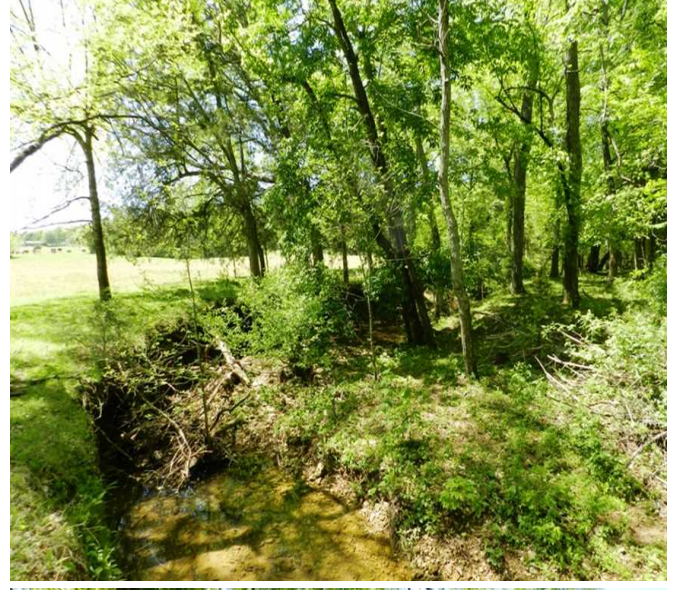
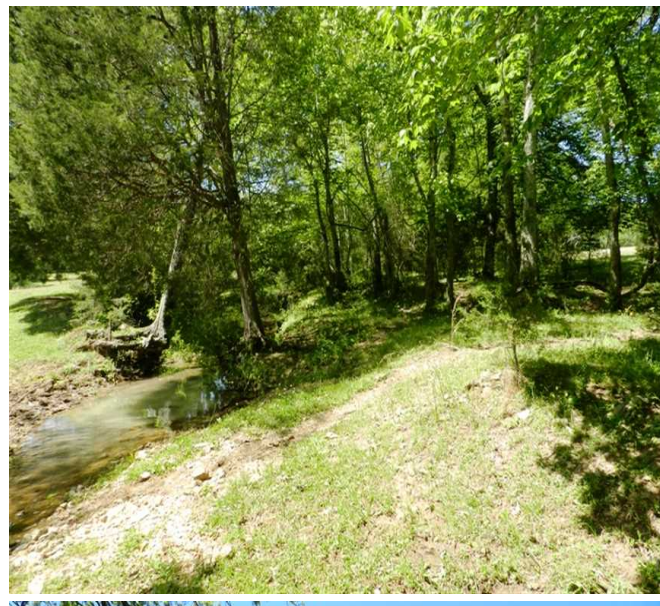
Asking \$199,000/ \$3,841 per acre for 51.80 acres

Purchase the additional 155 acres (MOP#38420) for \$524,000

For more information or to schedule an appointment to view the property, call Nathan McCollum at (256) 345-0074 or e-mail nmccollum@mossyoakproperties.com. We look forward to speaking with you.

51.80 Acres
Madison County
GPS 34.8045 X -86.4208

Mossy Oak Properties Southeast Land & Wildlife
www.selandandwildlife.com



51.80 Acres
Madison County
GPS 34.8045 X -86.4208

Mossy Oak Properties Southeast Land & Wildlife
www.selandandwildlife.com



51.80 Acres
Madison County
GPS 34.8045 X -86.4208

Mossy Oak Properties Southeast Land & Wildlife
www.selandandwildlife.com