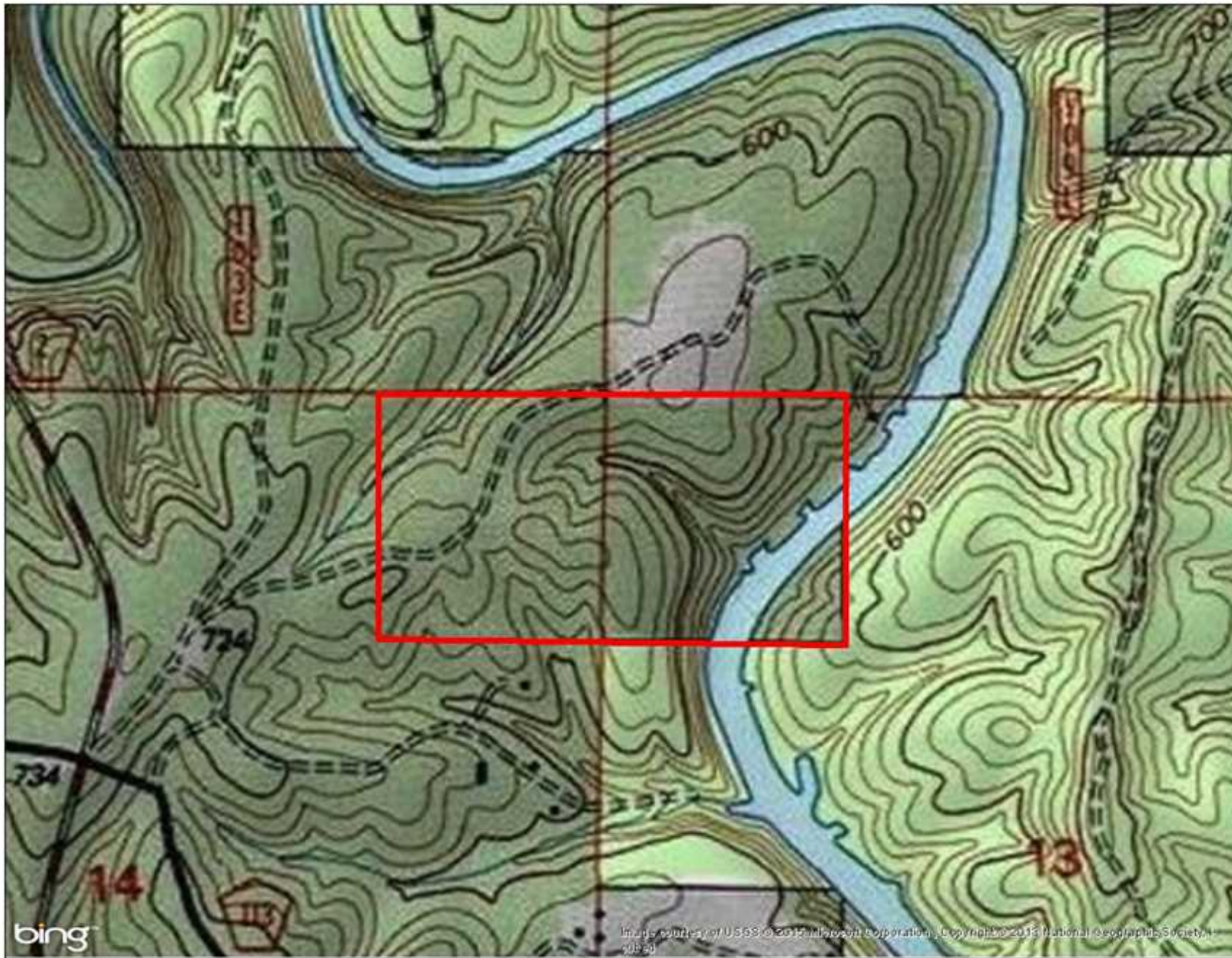


74+/- secluded tract near Double Springs, Alabama



Property Details:

Price : \$259,000
County : Winston
Acreage : 74.00
Address :
MOPLS ID : 33706

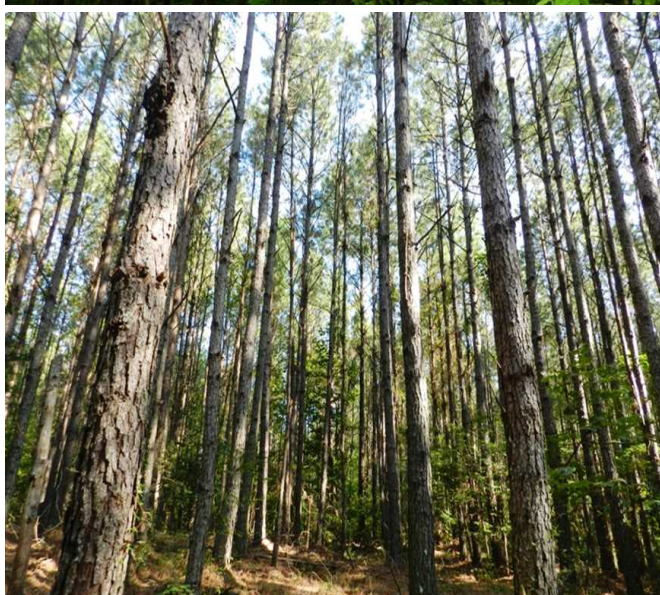
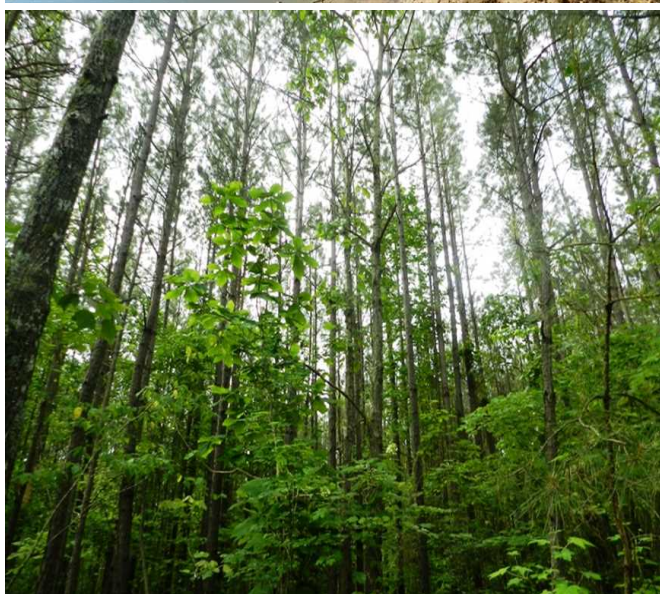
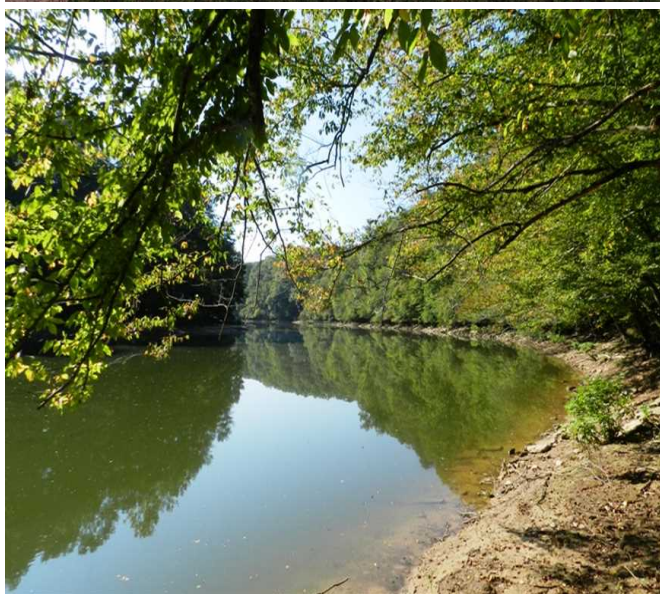
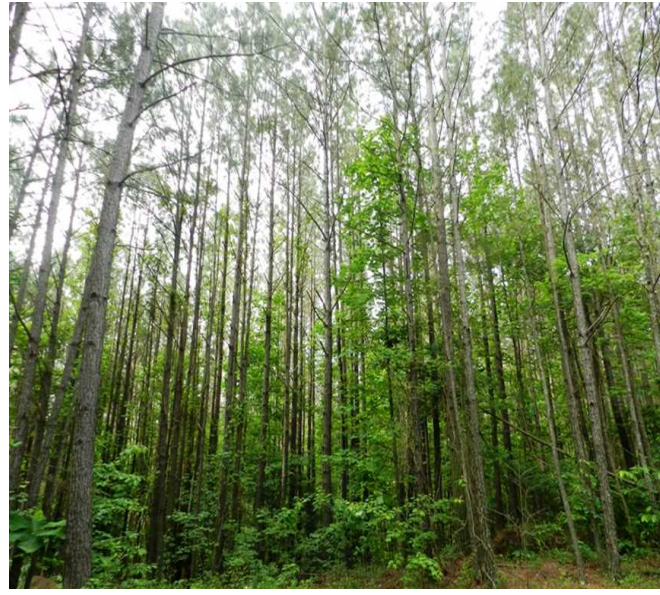
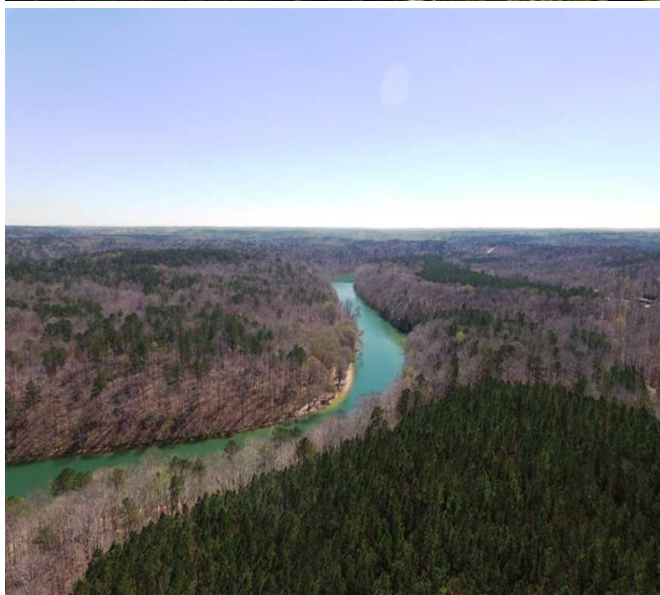
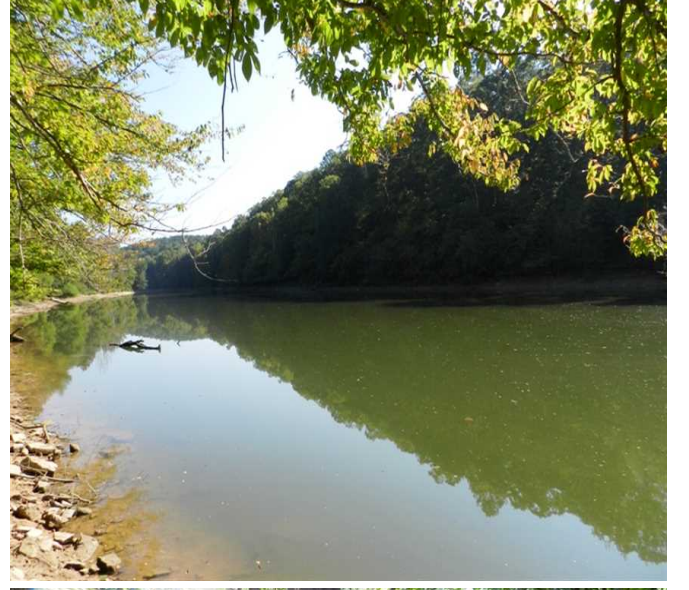
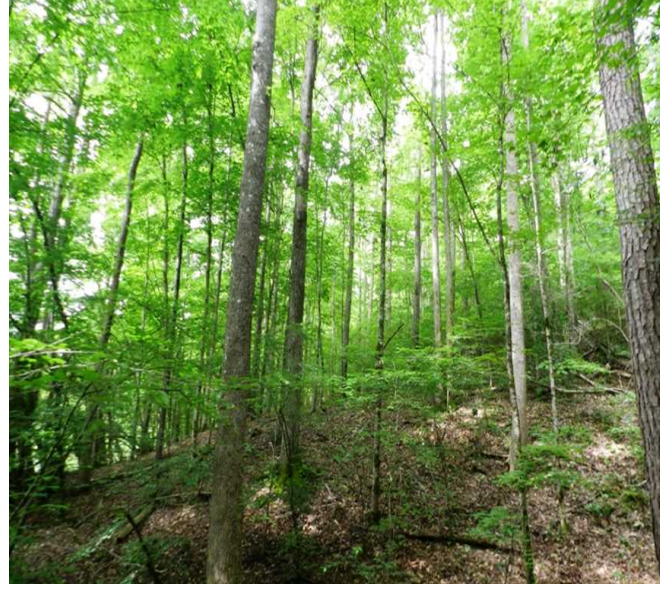
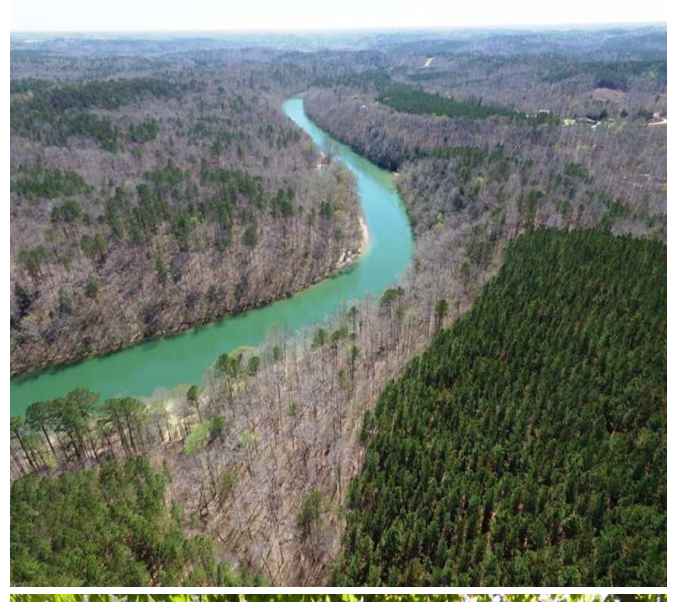
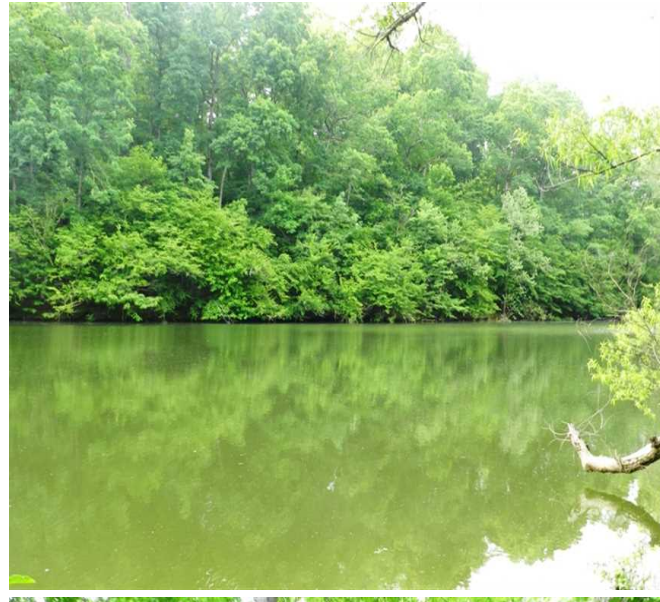
This 74+/- acre, secluded (end of the road feel), tract of land near Double Springs, Alabama, has over one quarter mile of frontage along Smith Lake and the Sipsey River. There is a fantastic stand of approximately 60 acres of unthinned pine stand with the remaining acreage in mature hardwood timber. Lake front property, hunting and recreation opportunities, and access to the more than 100,000 acres of Bankhead National Forest land, including many amenities, make this an abundant piece of land to call home or use as a recreational retreat. This could be used for multiple purposes including residential or commercial development. Utilities are available.

The thriving towns of Birmingham and Decatur are just one hour away and Huntsville, Alabama is only 1.5 hours away.

For more information or to schedule an appointment to view the property, call Nathan McCollum at (256) 345-0074 or e-mail nmccollum@mossyoakproperties.com. We look forward to speaking with you.

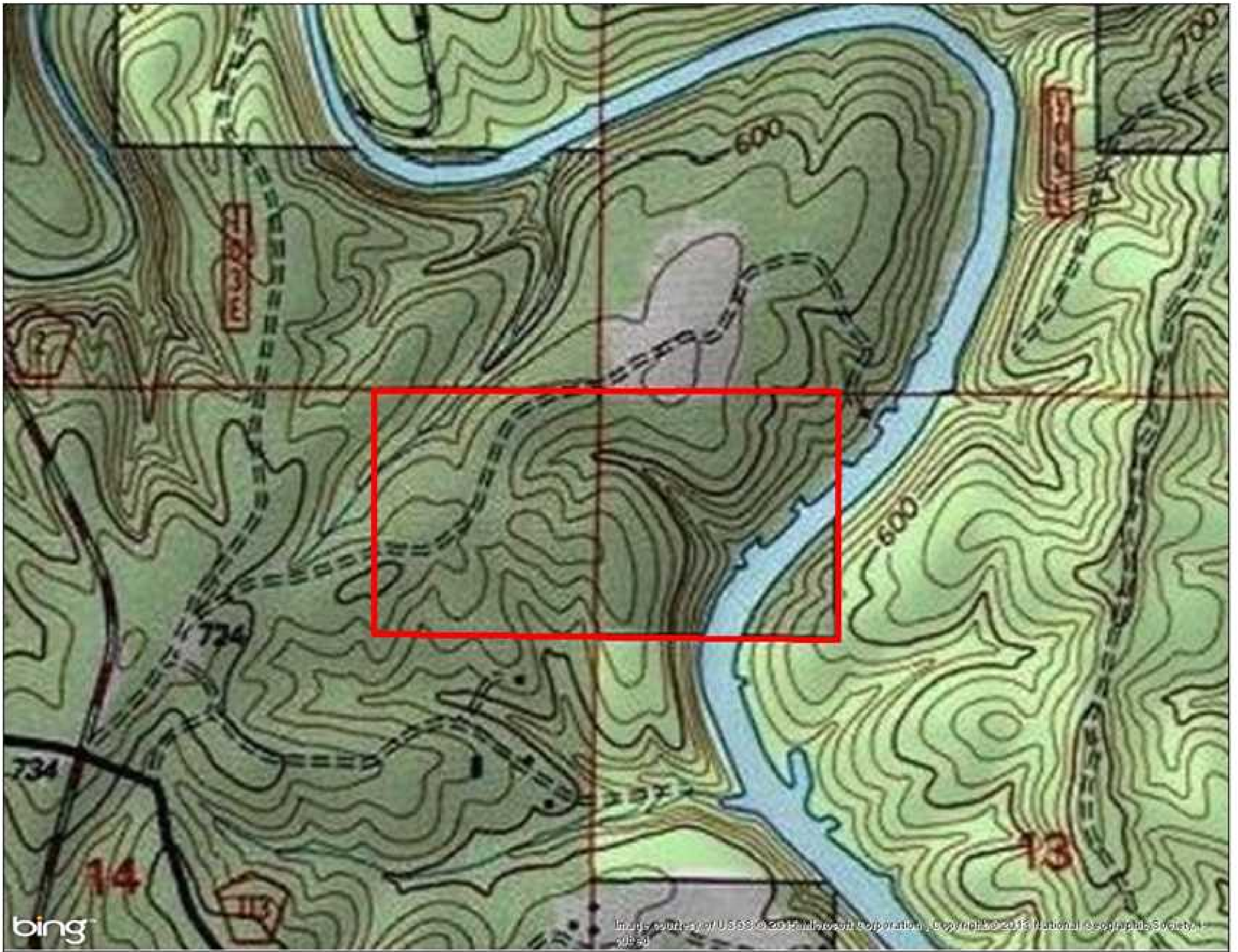
74.00 Acres
Winston County
GPS 34.1823 X -87.3410

Mossy Oak Properties Southeast Land & Wildlife
www.selandandwildlife.com



74.00 Acres
Winston County
GPS 34.1823 X -87.3410

Mossy Oak Properties Southeast Land & Wildlife
www.selandandwildlife.com



74.00 Acres
Winston County
GPS 34.1823 X -87.3410

Mossy Oak Properties Southeast Land & Wildlife
www.selandandwildlife.com