

**Property Details:**

Price : \$102,600  
County : Lamar  
Acreage : 76.00  
Address :  
MOPLS ID : 25652

Beautiful pastureland mixed use residential, recreational, timberland property. The property boasts plantation pines and a large creek. Game to harvest includes white tailed deer, turkey, and small game species including squirrel and rabbit. Conveniently located near Millport, Alabama.

- 18+/- acres of pastureland
- Gravel county road frontage
- Power is available
- Nice lake site

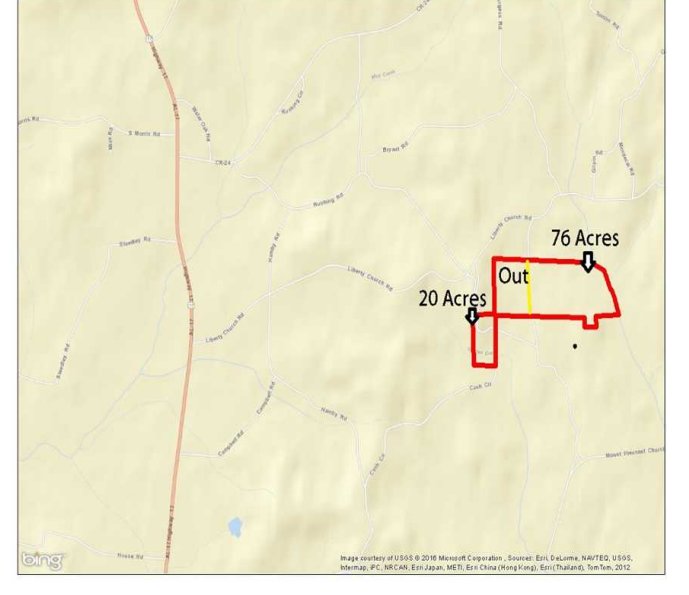
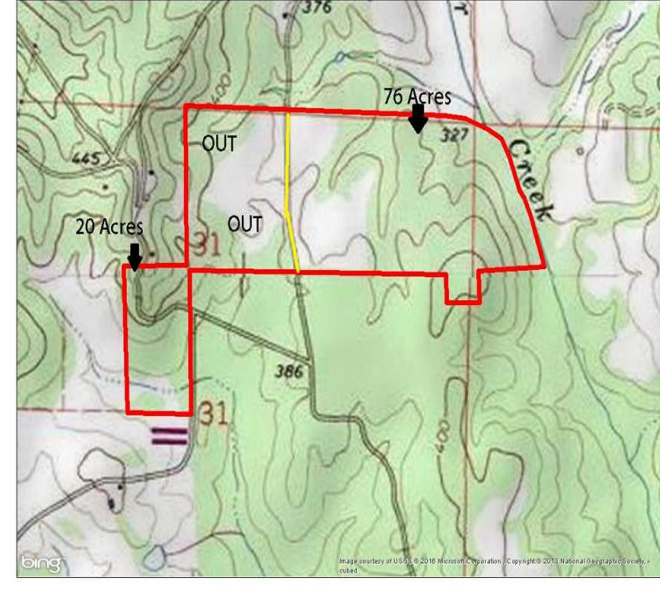
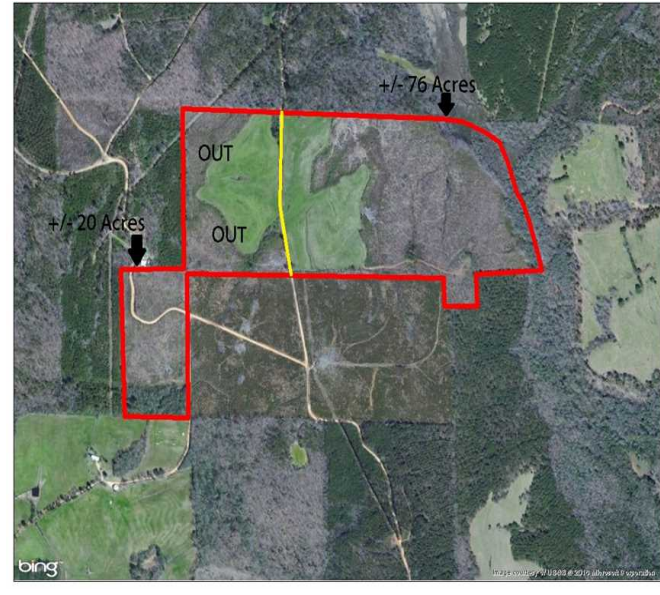
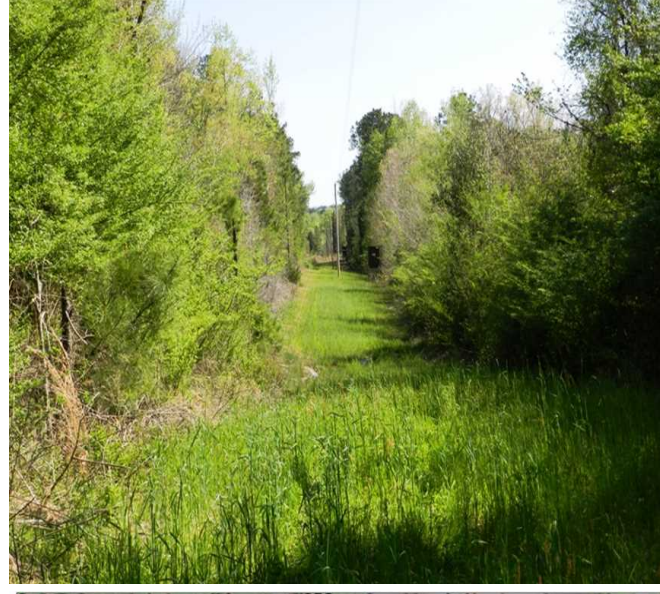
Asking Price: \$102,600 or \$1,350 per acre

Showing by Appointment Only. For a private showing or additional information, please contact Nathan McCollum at 256-345-0074 or email at [nmccollum@mossyoakproperties.com](mailto:nmccollum@mossyoakproperties.com). We look forward to speaking with you.

Lamar County ,road frontage, mixed use recreational, farmland, timberland

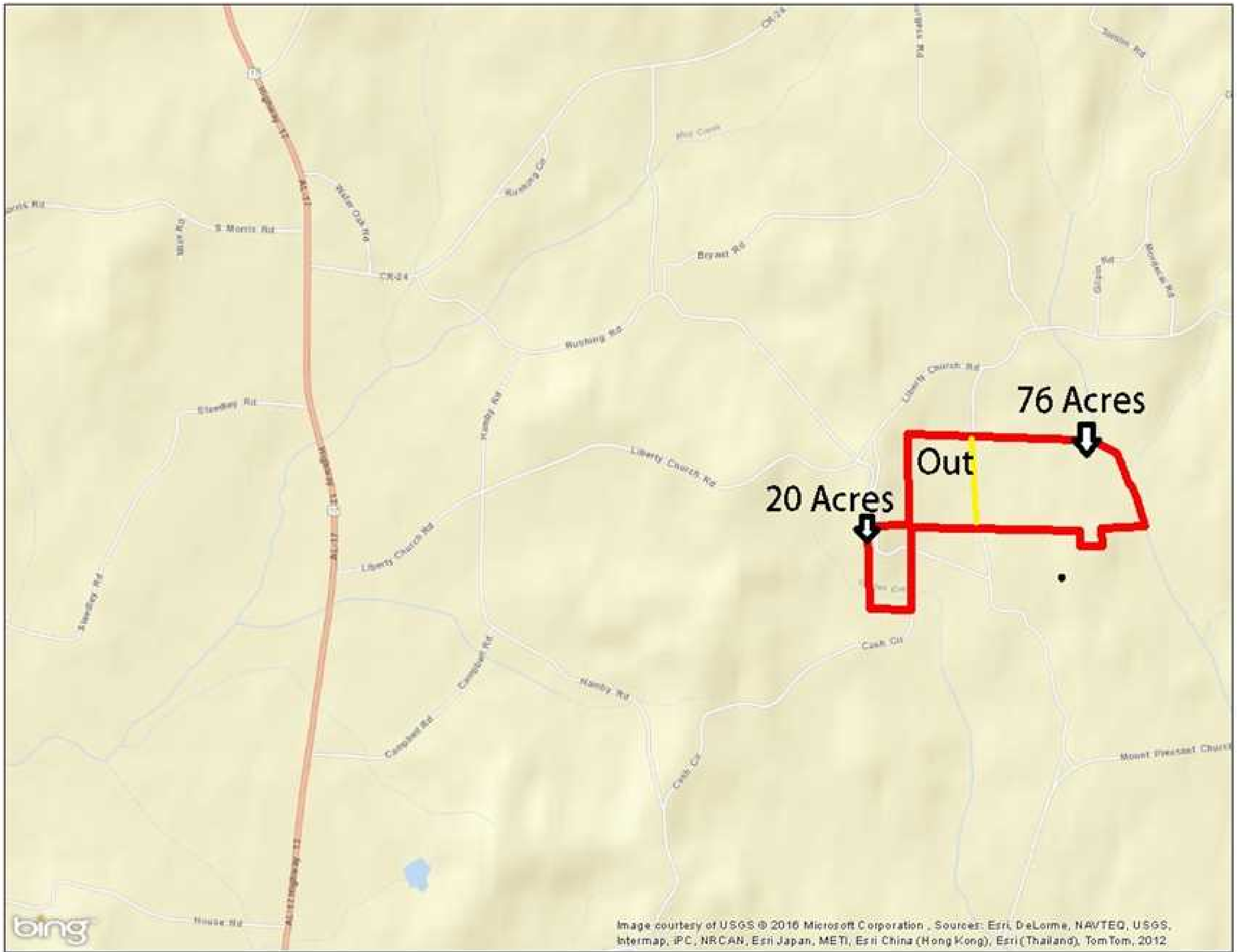
76.00 Acres  
Lamar County  
GPS 33.6272 X -88.0399

Mossy Oak Properties Southeast Land & Wildlife  
[www.selandandwildlife.com](http://www.selandandwildlife.com)



76.00 Acres  
Lamar County  
GPS 33.6272 X -88.0399

Mossy Oak Properties Southeast Land & Wildlife  
[www.selandandwildlife.com](http://www.selandandwildlife.com)



76.00 Acres  
Lamar County  
GPS 33.6272 X -88.0399

Mossy Oak Properties Southeast Land & Wildlife  
[www.selandandwildlife.com](http://www.selandandwildlife.com)