

776 Acres Land for Sale in Lewis County, Tennessee



Property Details:

Price : \$999,000

County : Lewis

Acreage : 776.00

Address : Big Swan Creek Rd

MOPLS ID : 47998

RECREATIONAL AND INVESTMENT TRACT IN NASHVILLE AREA

776 ACRES | LEWIS COUNTY, TENNESSEE | \$999,000

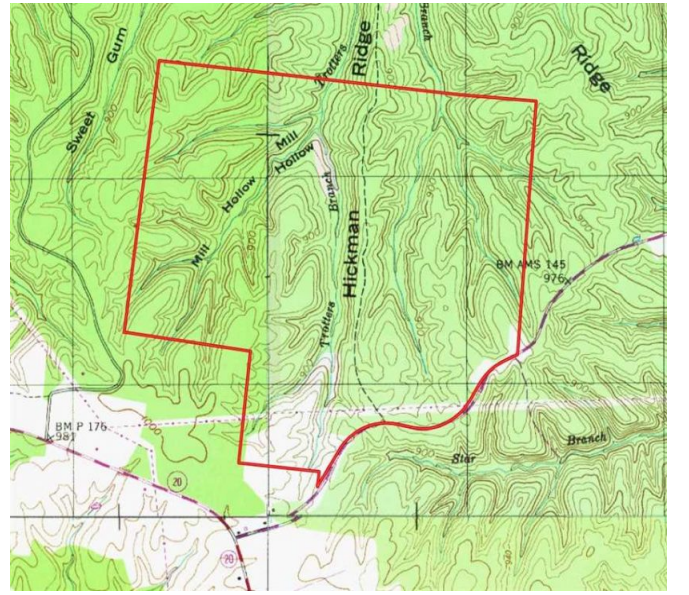
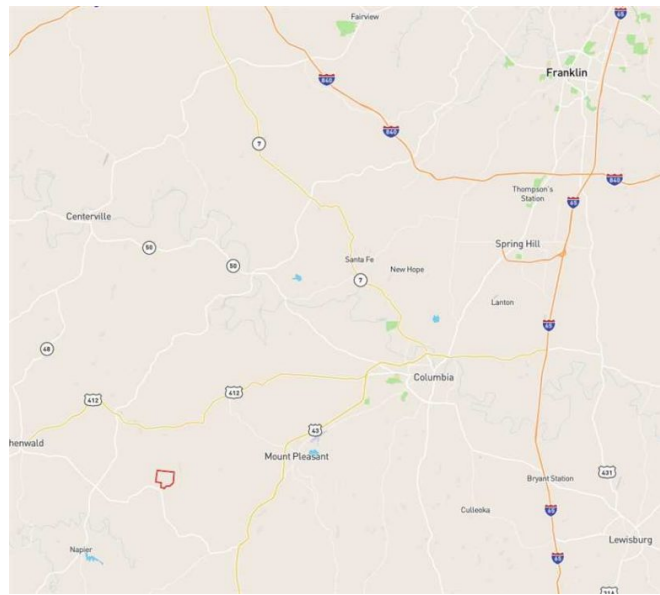
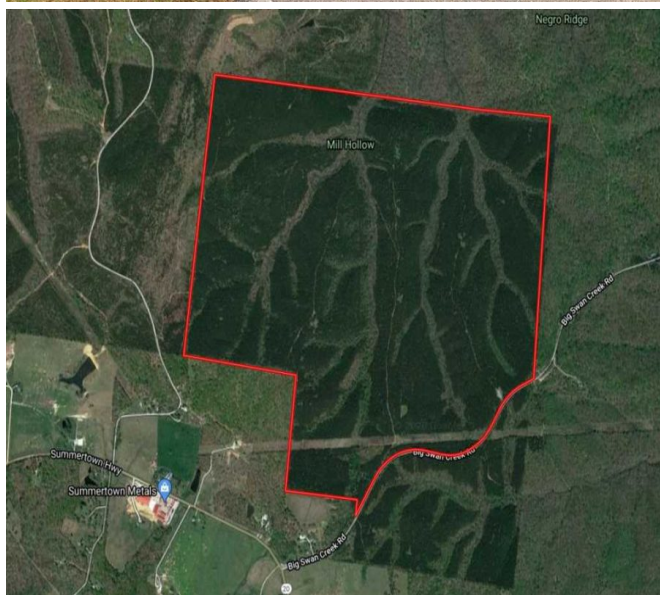
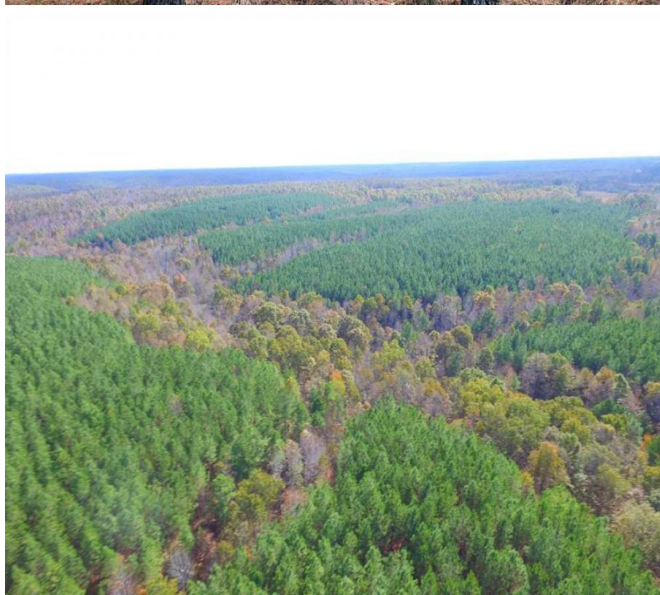
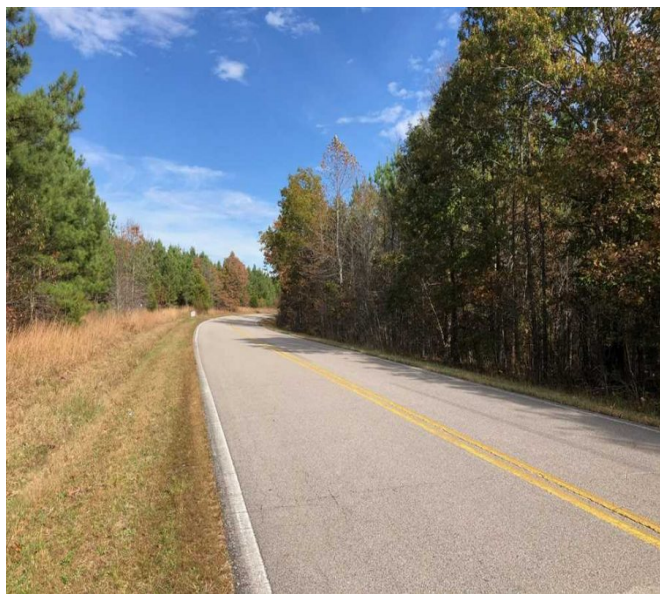
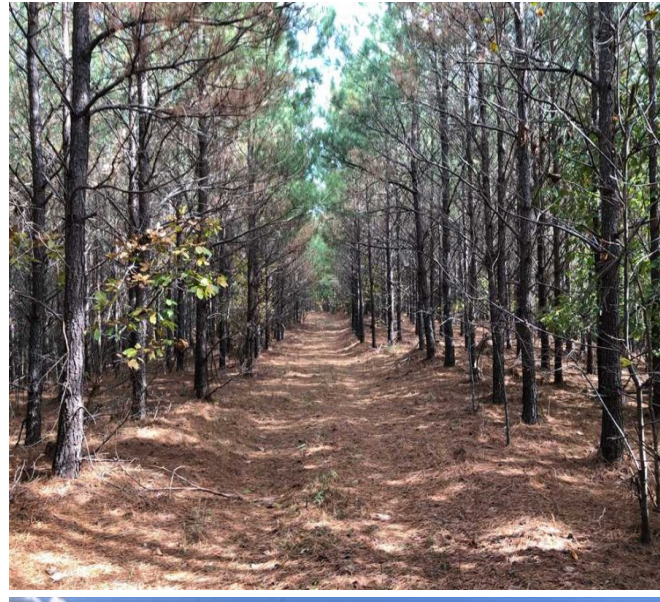
Lewis County, which lies in the Appalachian Region, was named for explorer Meriwether Lewis of the Lewis and Clark expedition and this large-acreage tract boasts an unbeatable location in the Summertown area. The seller has invested years of hard work in managing this tract. As a result, this property holds quality pine timber, great deer and turkey hunting, two creeks, good rolling topography, and plenty of roads and trails. If you are looking for a property with outstanding investment potential surrounded by history and opportunity, you will not want to miss out on this one. Located just one hour from the Nashville Metro Area! Asking \$999,000/ \$1,287 per acre.

Contact Mossy Oak Properties Southeast Land & Wildlife LLC to view this terrific property with exceptional recreation and hunting opportunities. Our team has a unique team of professionals with 70 years of combined experience in land brokerage and timber management. By investing in our clients and their properties, we are not just selling property, we are building lifelong friendships. Let us help you "Find Your Favorite Place."

Call Nathan McCollum at (256) 345-0074 or email nmccollum@mossyoakproperties.com.

776.00 Acres
Lewis County
GPS 35.5035 X -87.3702

Mossy Oak Properties Southeast Land & Wildlife
www.selandandwildlife.com



776.00 Acres
Lewis County
GPS 35.5035 X -87.3702

Mossy Oak Properties Southeast Land & Wildlife
www.selandandwildlife.com



776.00 Acres
Lewis County
GPS 35.5035 X -87.3702

Mossy Oak Properties Southeast Land & Wildlife
www.selandandwildlife.com