



**Property Details:**

Price : \$115,112

County : Lawrence

Acreage : 82.50

Address : County Road 508

MOPLS ID : 21617

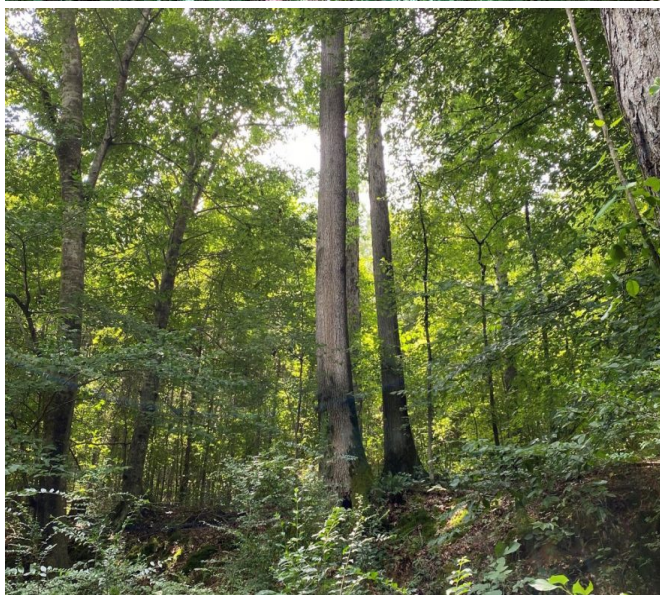
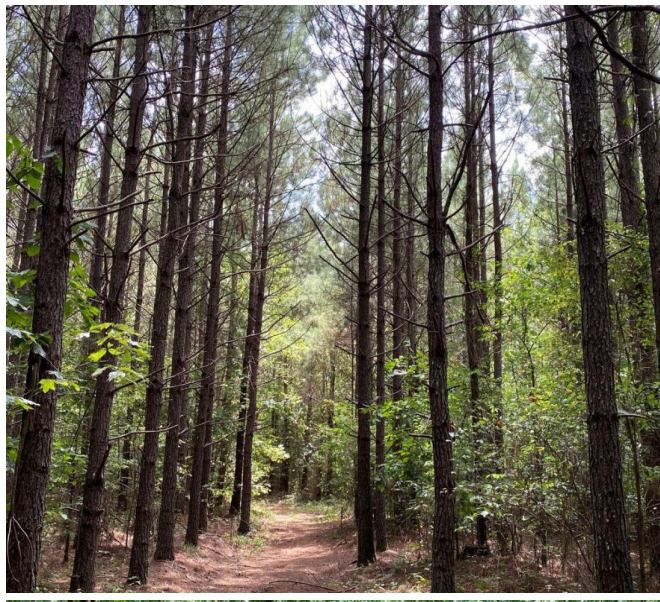
Located on County Road 508 in Moulton, Alabama, the property consists of 82.5 acres in Section 2, T6S, R8W. The land is comprised of ridge tops planted in 18 year old pine plantation and creek bottoms consisting of natural hardwood timber. The tract boasts over a half mile of Big Nance Creek frontage. This is a large creek with year round flowing water perfect for recreational activities such as kayaking, rafting, fishing, or hiking. The property also has creek frontage along Rutherford creek on the northeast side.

Conveniently located off Alabama Highway 157 in Moulton, less than 30 minutes from both Decatur and Florence, and less than one hour to Huntsville, Alabama.

Call/ Text Austin Littrell 256-460-1875.

82.50 Acres  
Lawrence County  
GPS 34.5537 X -87.3481

Mossy Oak Properties Southeast Land & Wildlife  
[www.selandandwildlife.com](http://www.selandandwildlife.com)



82.50 Acres  
 Lawrence County  
 GPS 34.5537 X -87.3481

Mossy Oak Properties Southeast Land & Wildlife  
[www.selandandwildlife.com](http://www.selandandwildlife.com)



82.50 Acres  
Lawrence County  
GPS 34.5537 X -87.3481

Mossy Oak Properties Southeast Land & Wildlife  
[www.selandandwildlife.com](http://www.selandandwildlife.com)