

**Property Details:**

Price : \$599,000  
County : Humphreys  
Acreage : 217.80  
Address :  
MOPLS ID : 20265

There are not too many places around with over 1/2 mile of Duck River frontage, accessibility and views like this farm has to offer.

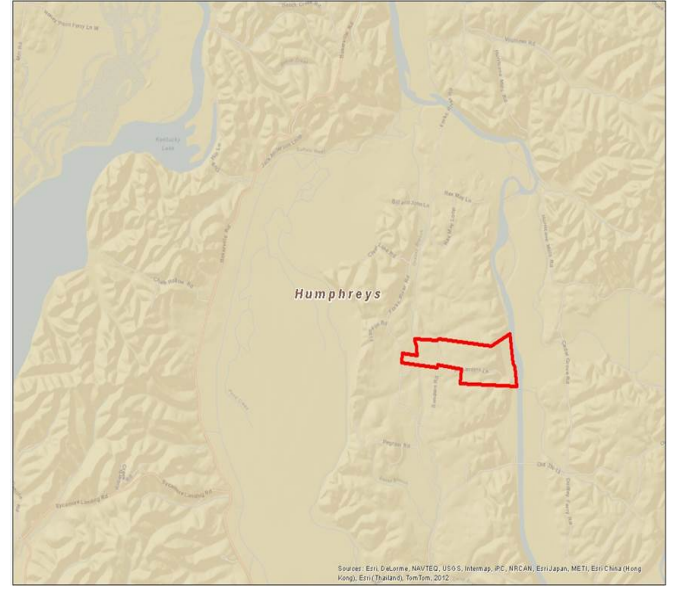
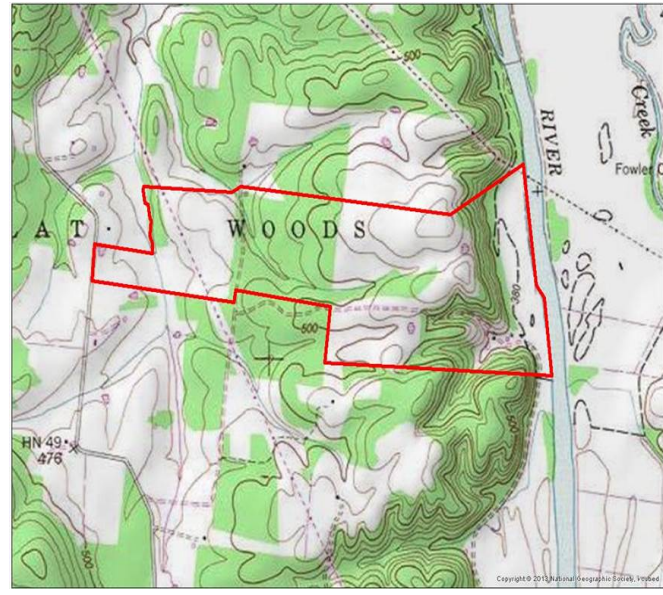
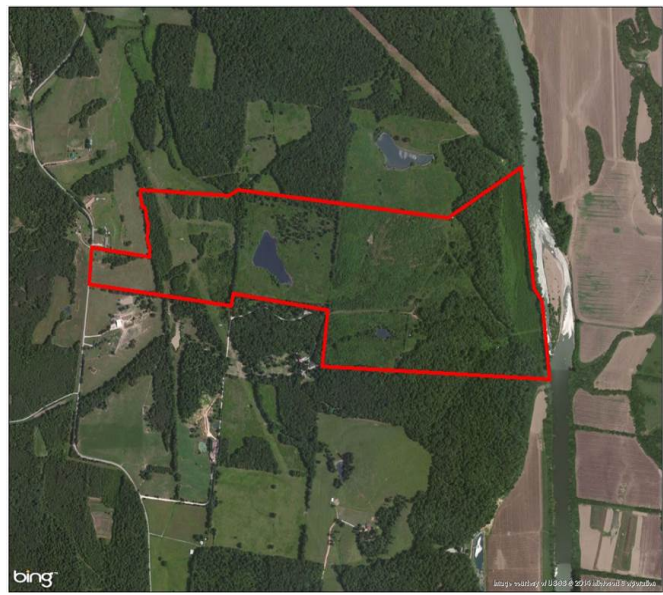
- 2 ponds, one of which is close to 3 acres
- Mix woods and pastureland
- Great Deer, Duck and Turkey Hunting
- Power all the way to the river

Showing by Appointment Only. For a private showing or additional information, please contact Nathan McCollum at 256-345-0074 or email at [nmccollum@mossyoakproperties.com](mailto:nmccollum@mossyoakproperties.com). We look forward to speaking with you.

road frontage, Humphreys County, whitetail deer, freshwater fishing

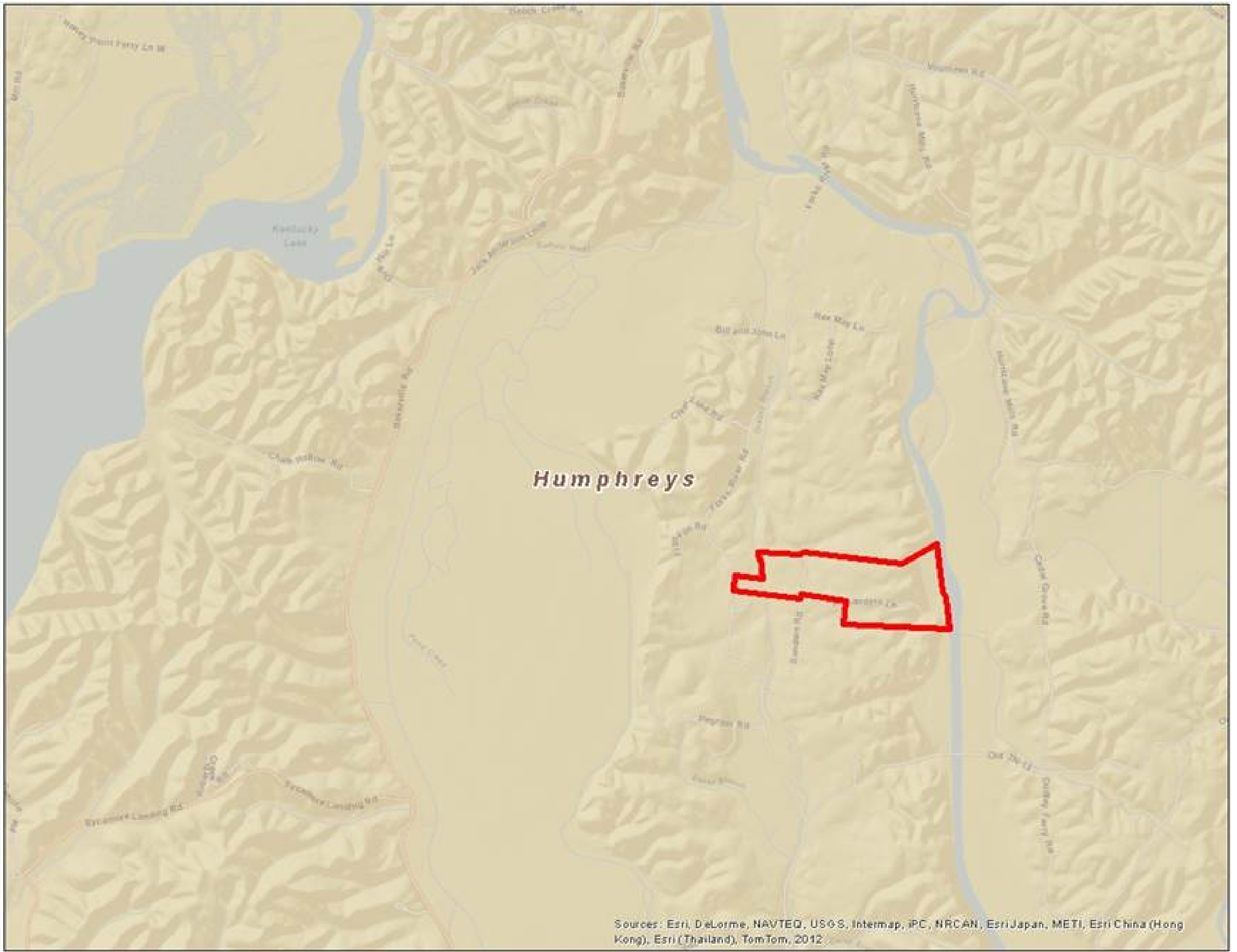
217.80 Acres  
Humphreys County  
GPS 35.9616 X -87.8416

Mossy Oak Properties Southeast Land & Wildlife  
[www.selandandwildlife.com](http://www.selandandwildlife.com)



217.80 Acres  
Humphreys County  
GPS 35.9616 X -87.8416

Mossy Oak Properties Southeast Land & Wildlife  
[www.selandandwildlife.com](http://www.selandandwildlife.com)



Sources: Esri, DeLorme, NAVTEQ, USGS, Intermap, iPC, NRCAN, EsriJapan, METI, Esri China (Hong Kong), Esri (Thailand), TomTom, 2012

217.80 Acres  
Humphreys County  
GPS 35.9616 X -87.8416

Mossy Oak Properties Southeast Land & Wildlife  
[www.selandandwildlife.com](http://www.selandandwildlife.com)