

54.50 Acres Land for Sale County Road 110 Tishomingo County, Mississippi



Property Details:

Price : \$75,000

County : Tishomingo

Acreage : 54.50

Address : County Road 110

MOPLS ID : 50072

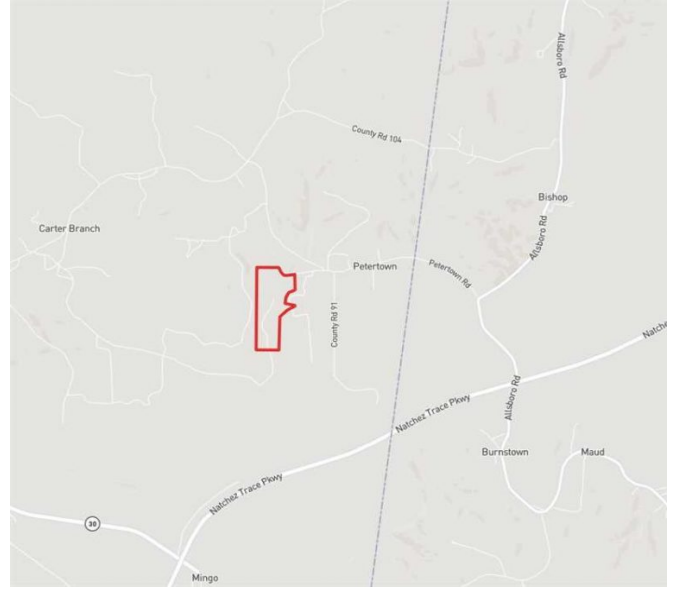
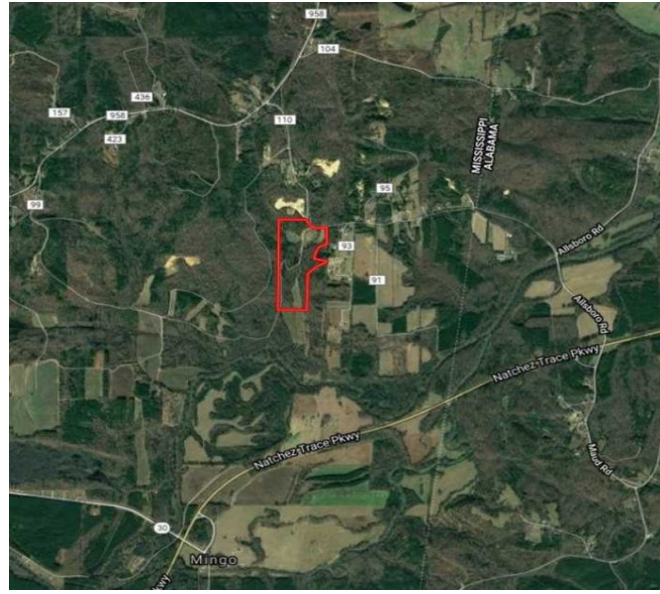
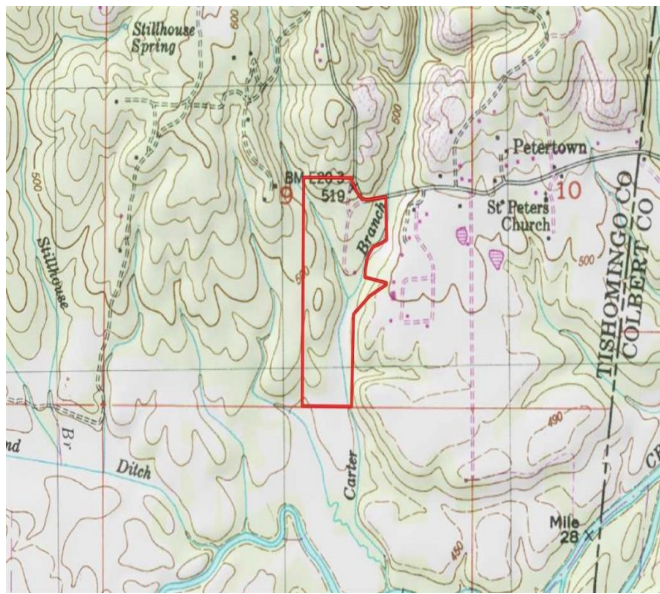
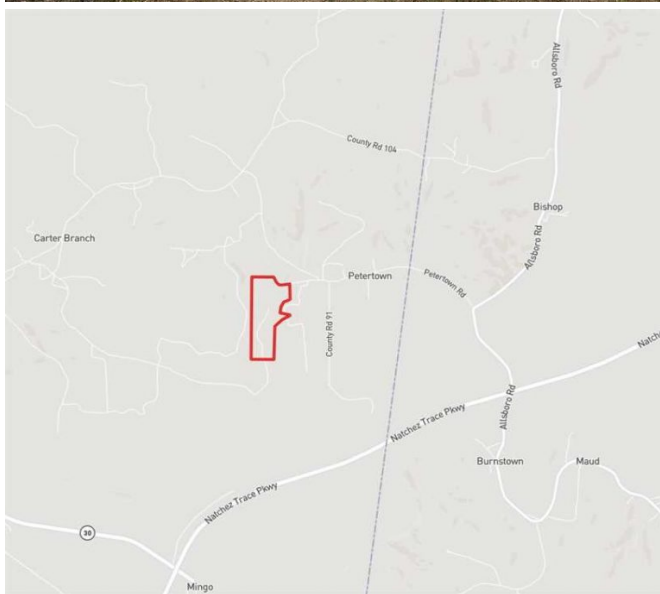
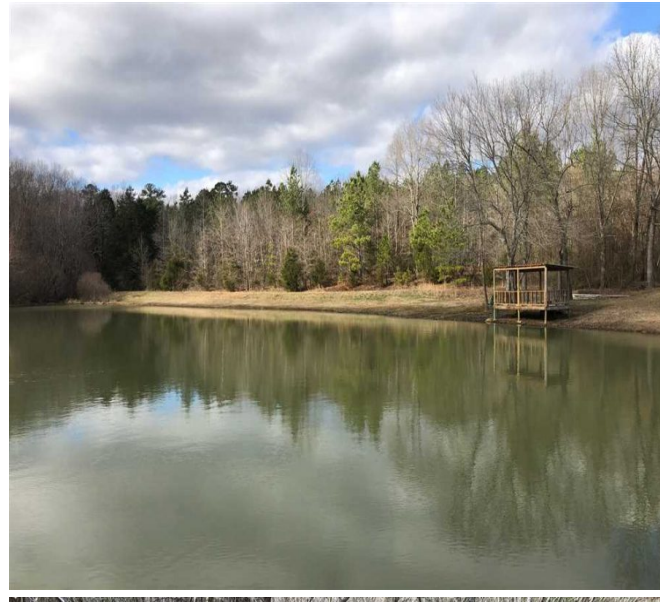
This beautiful 54.50 acre house site overlooking a .05 acre lake comes with multiple recreational benefits! Located on County Road 110 in the Carters Branch community, not only does this property have a small creek transecting it, but utilities are also present. Conveniently located just off the Natchez Trace Parkway and one half mile from Cedar Creek where canoeing, kayaking, and fishing are accessible. This property boasts of plenty of wildlife and about 5 acres of open land. Convenient to the historic Town of Tishomingo and the historic Natchez Trace Parkway.

Contact Mossy Oak Properties Southeast Land & Wildlife LLC to view this terrific property with exceptional recreation and hunting opportunities. Our team has a unique team of professionals with 70 years of combined experience in land brokerage and timber management. By investing in our clients and their properties, we are not just selling property, we are building lifelong friendships. Let us help you "Find Your Favorite Place."

Call Nathan McCollum at (256) 345-0074 or email nmccollum@mossyoakproperties.com.

54.50 Acres
Tishomingo County
GPS 34.6589 X -88.1422

Mossy Oak Properties Southeast Land & Wildlife
www.selandandwildlife.com



54.50 Acres
Tishomingo County
GPS 34.6589 X -88.1422

Mossy Oak Properties Southeast Land & Wildlife
www.selandandwildlife.com



54.50 Acres
Tishomingo County
GPS 34.6589 X -88.1422

Mossy Oak Properties Southeast Land & Wildlife
www.selandandwildlife.com