

Property Details:

Price : \$50,000
County : DeKalb
Acreage : 40.00
Address :
MOPLS ID : 32533

40 +/- acres of mature hardwood timber located south of Ft. Payne, AL. Topography is rolling to steep.

A nice piece of property offering mixed use recreational, timberland opportunities.

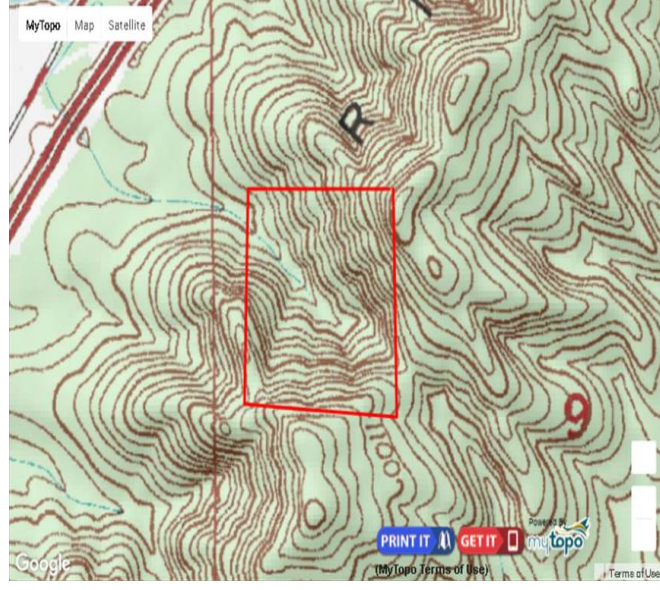
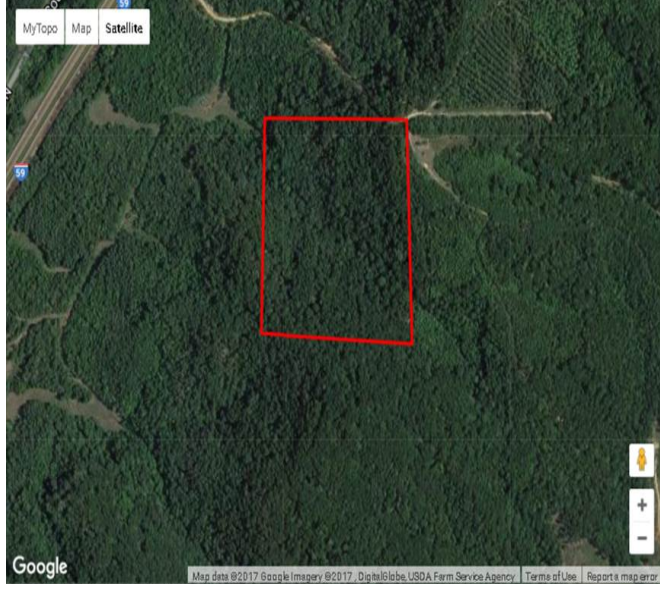
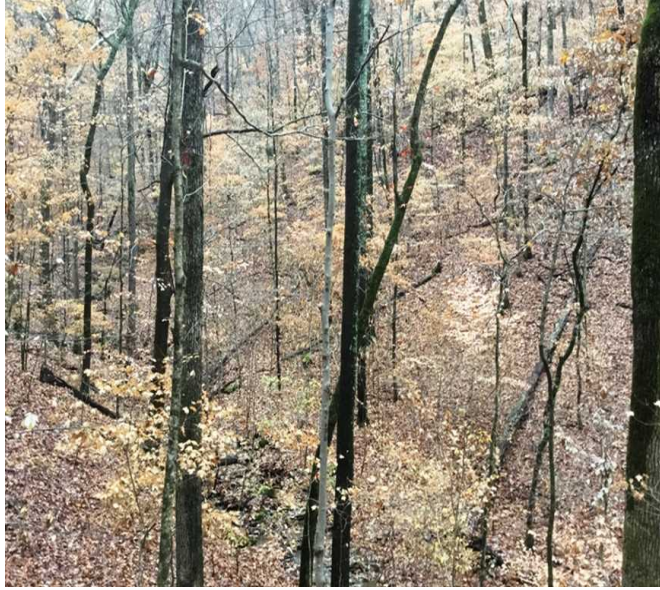
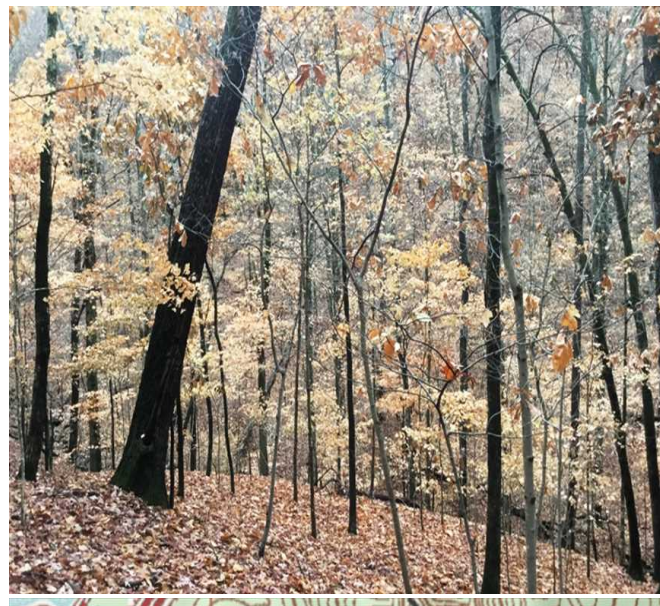
Mapright Link: <https://mapright.com/ranching/maps/174f672238943996dbea06d97028c60f/share>

Asking \$50,000 or \$1,250/acre

Showing by Appointment Only. For a private showing or additional information, please contact Nathan McCollum at 256-345-0074 or email at nmccollum@mossyoakproperties.com. We look forward to speaking with you.

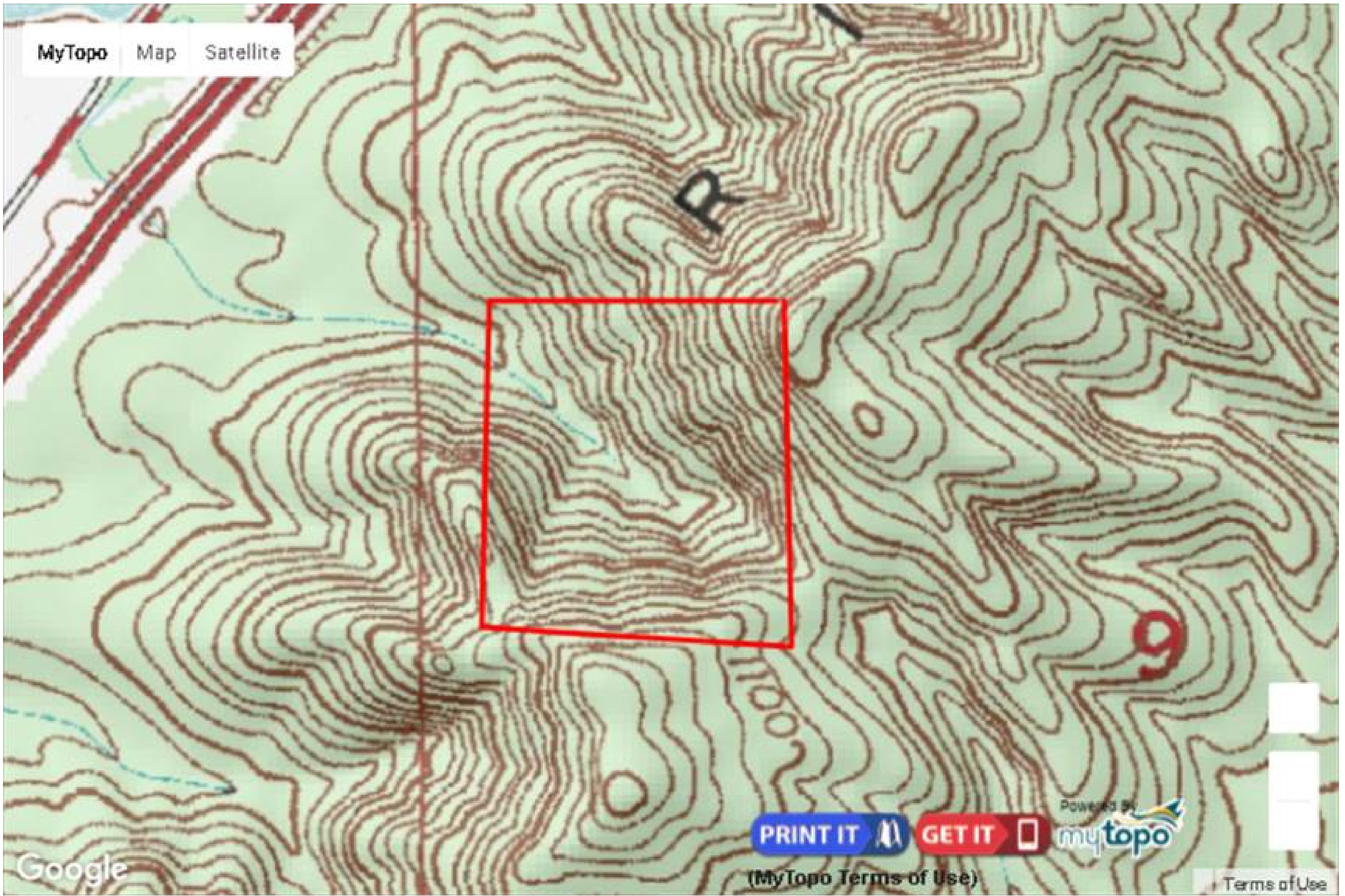
40.00 Acres
DeKalb County
GPS 34.3564 X -85.8072

Mossy Oak Properties Southeast Land & Wildlife
www.selandandwildlife.com



40.00 Acres
 DeKalb County
 GPS 34.3564 X -85.8072

Mossy Oak Properties Southeast Land & Wildlife
www.selandandwildlife.com



40.00 Acres
DeKalb County
GPS 34.3564 X -85.8072

Mossy Oak Properties Southeast Land & Wildlife
www.selandandwildlife.com