

Property Details:

Price : \$34,369
County : Franklin
Acreage : 20.83
Address :
MOPLS ID : 23123

Don't miss out on this 20.83 acres of Bottomland Pine. Hurricane Creek meanders along the southern boundary to the property.

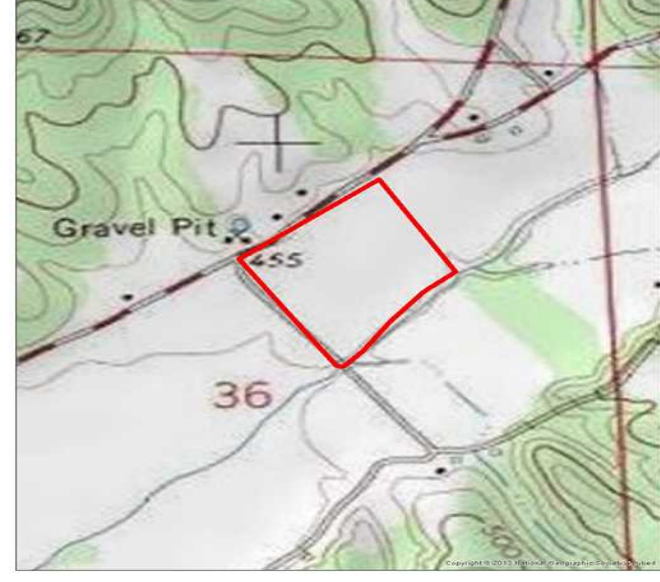
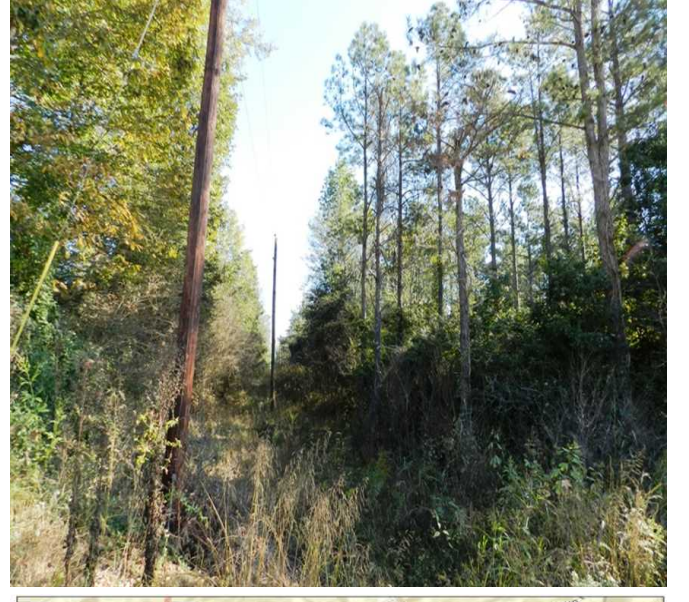
Key Features:

- Power and water available
- 20 year old bottomland pine
- Creek
- Road frontage
- Hunting opportunities

Showing by Appointment Only. For a private showing or additional information, please contact Nathan McCollum at 256-345-0074 or email at nmccollum@mossyoakproperties.com. We look forward to speaking with you.

20.83 Acres
Franklin County
GPS 34.3318 X -88.1658

Mossy Oak Properties Southeast Land & Wildlife
www.selandandwildlife.com



20.83 Acres
Franklin County
GPS 34.3318 X -88.1658

Mossy Oak Properties Southeast Land & Wildlife
www.selandandwildlife.com



20.83 Acres
Franklin County
GPS 34.3318 X -88.1658

Mossy Oak Properties Southeast Land & Wildlife
www.selandandwildlife.com