

Property Details:

Price : \$219,000
County : Etowah
Acreage : 178.00
Address :
MOPLS ID : 28014

This property with beautiful Coosa River views awaits you less than 15 minutes from north of Gadsden in the "Ballplay" area! This is a 178+/- acre retreat with bottomland timber composed primarily of hardwood and offers significant value. Ballplay Creek transects the property and this is a perfect location for duck, turkey, whitetail deer and watersports.

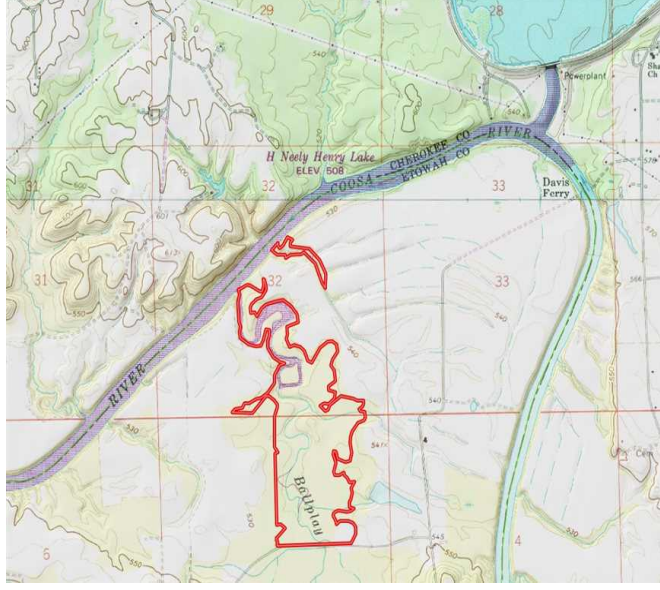
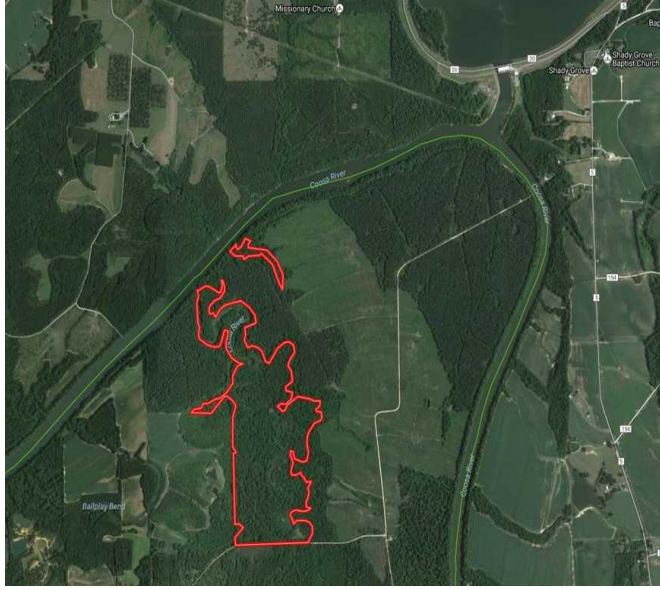
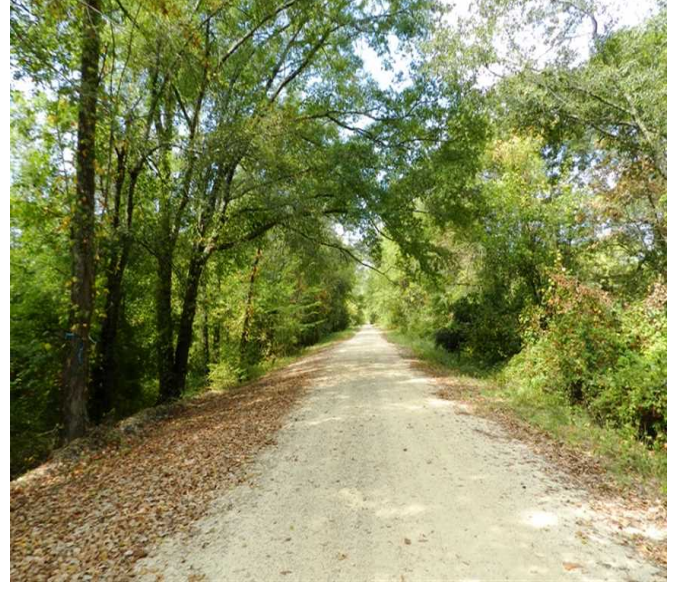
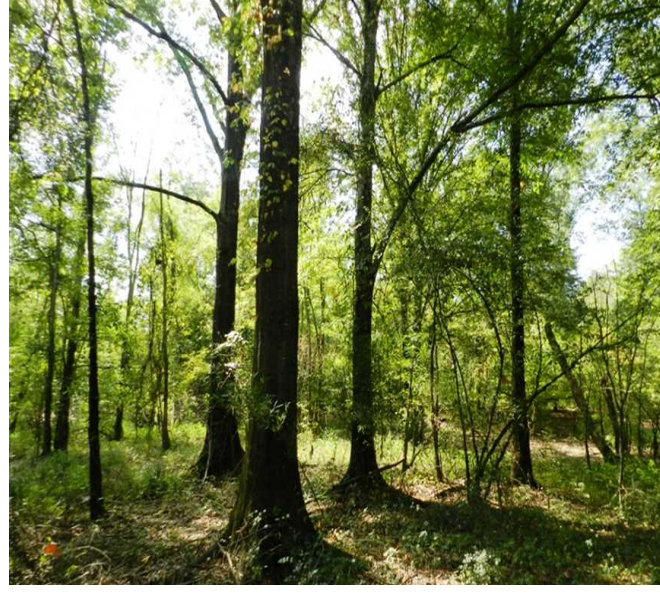
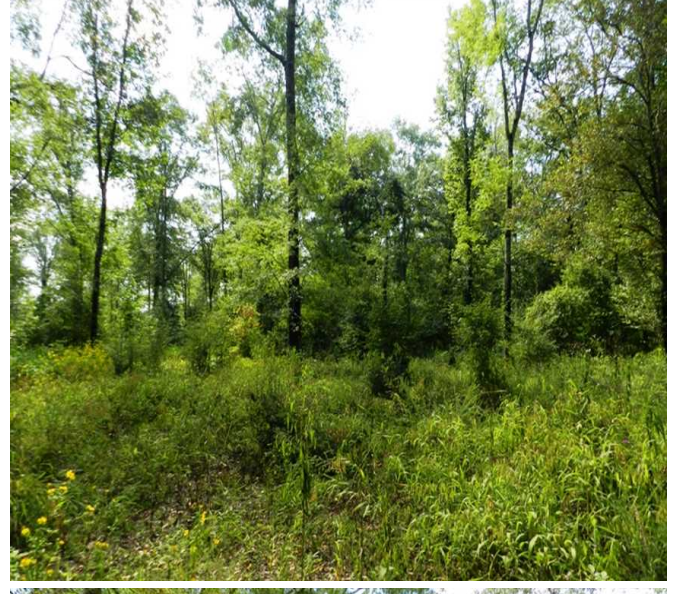
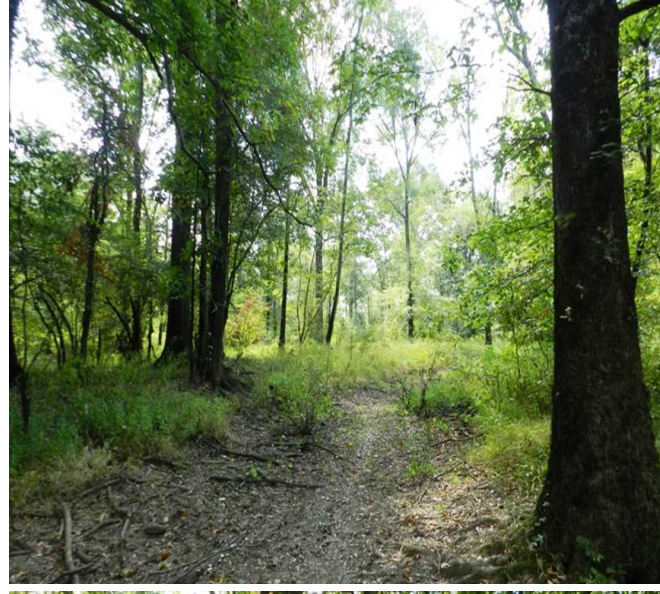
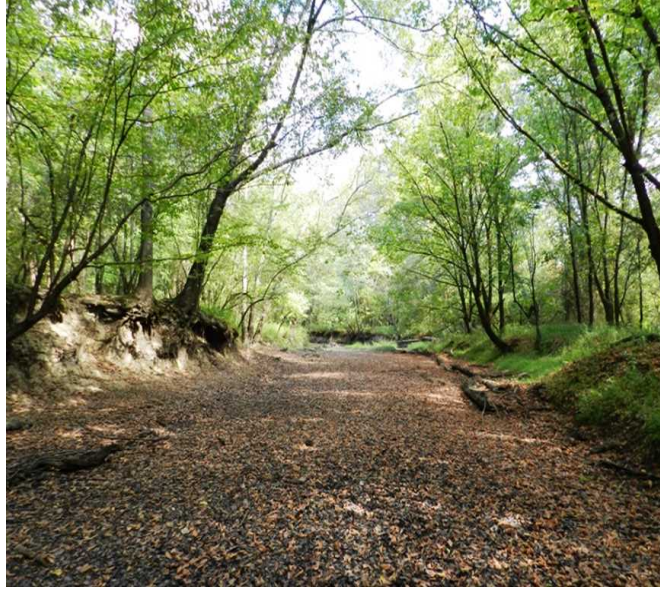
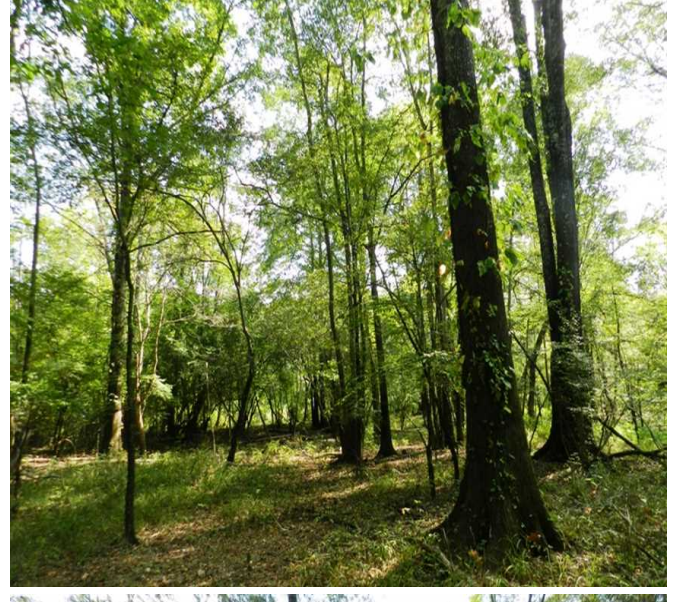
Asking Price: \$219,000 or \$1,230 per acre

Showing by Appointment Only. For a private showing or additional information, please contact Nathan McCollum at 256-345-0074 or email at nmccollum@mossyoakproperties.com. We look forward to speaking with you.

178 acre propertywater sports

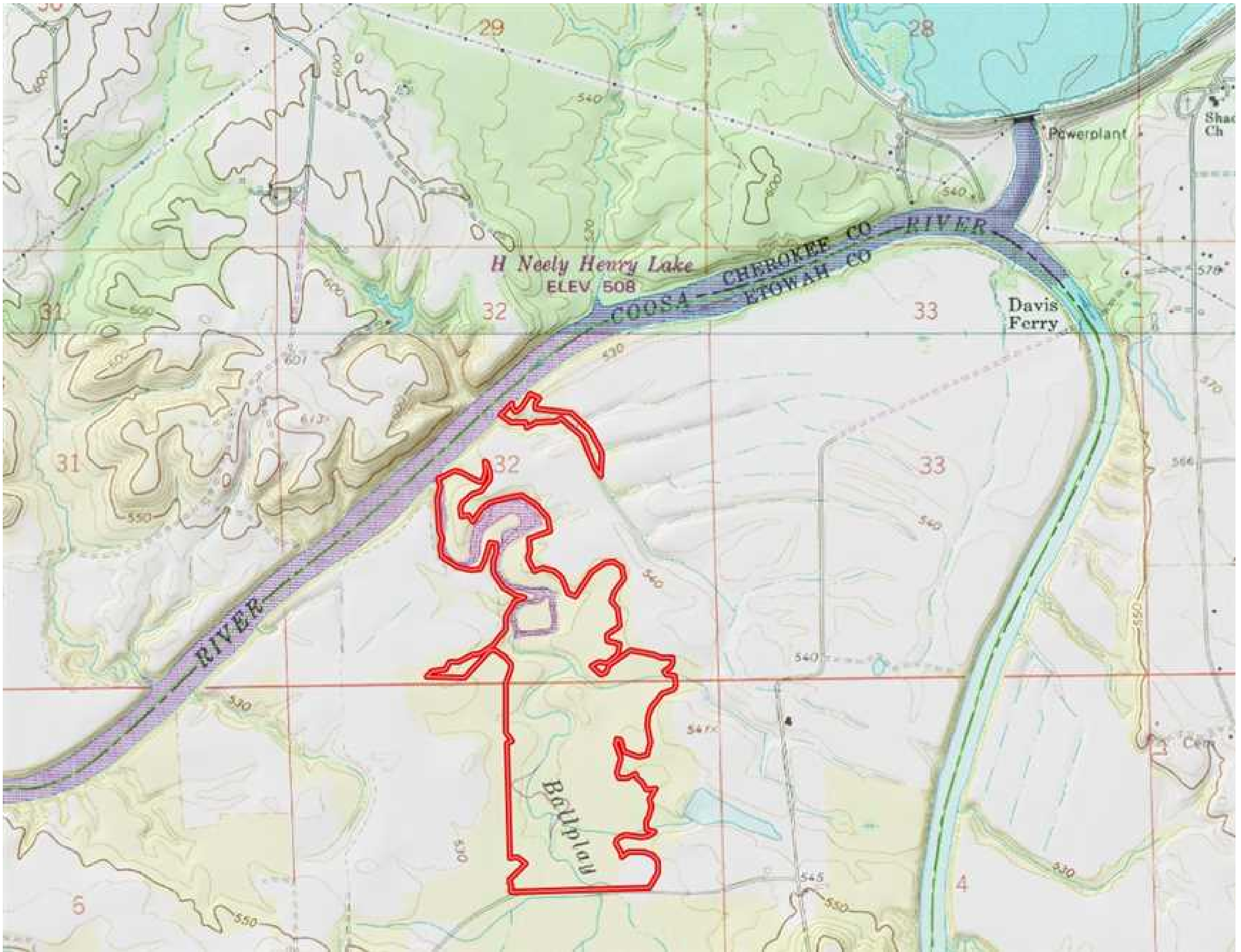
178.00 Acres
Etowah County
GPS 34.1073 X -85.8106

Mossy Oak Properties Southeast Land & Wildlife
www.selandandwildlife.com



178.00 Acres
Etowah County
GPS 34.1073 X -85.8106

Mossy Oak Properties Southeast Land & Wildlife
www.selandandwildlife.com



178.00 Acres
Etowah County
GPS 34.1073 X -85.8106

Mossy Oak Properties Southeast Land & Wildlife
www.selandandwildlife.com