

Property Details:

Price : \$1,479,500
 County : Lawrence
 Acreage : 283.00
 Address :
 MOPLS ID : 21764

First time offered in over 100 years, there's nothing else like it in Tennessee!

This gorgeous property shares a 1.5 mile boundary with the historic Davy Crockett State Park (<http://tnstateparks.com/parks/about/david-crockett>). Crowson Creek traverses one mile along the property. Deer and turkey are plentiful. and practically tame, as they (and you) enjoy everything that the state park has to offer.

Definitely a sportsman's parade with a great mix of open land for cattle or horses and woods for the wildlife. Beautiful views of the surrounding countryside entertain and encourage an imaginary home site offering seclusion, yet still only minutes from town. The Lawrenceburg Country Club and Golf Course are located across the street and Lawrenceburg city schools are less than one mile away.

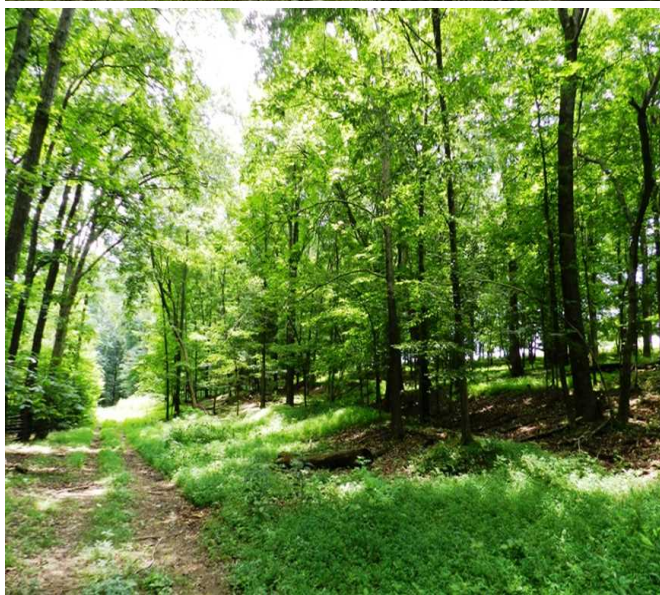
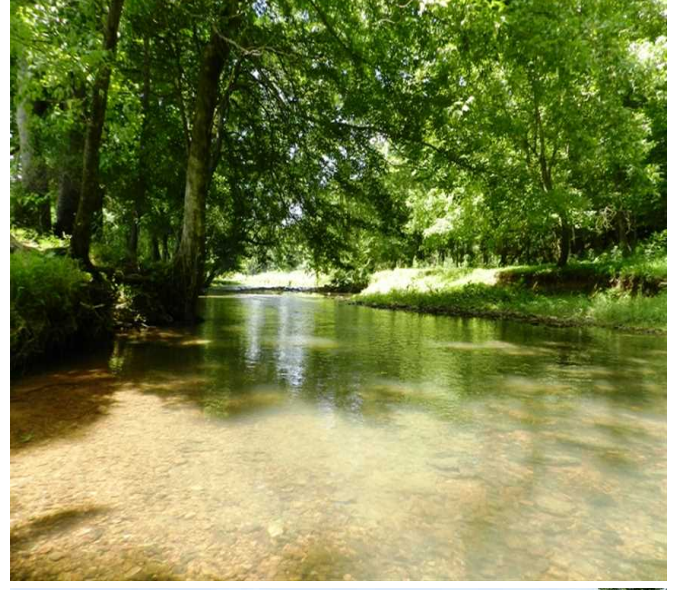
Additional Information:

- Power, water and sewer available
- Owner will divide

Showing by Appointment Only. For a private showing or additional information, please contact Nathan McCollum at 256-345-0074 or email at nmccollum@mossyoakproperties.com. We look forward to speaking with you.

283.00 Acres
 Lawrence County
 GPS 35.2526 X -87.3706

Mossy Oak Properties Southeast Land & Wildlife
www.selandandwildlife.com



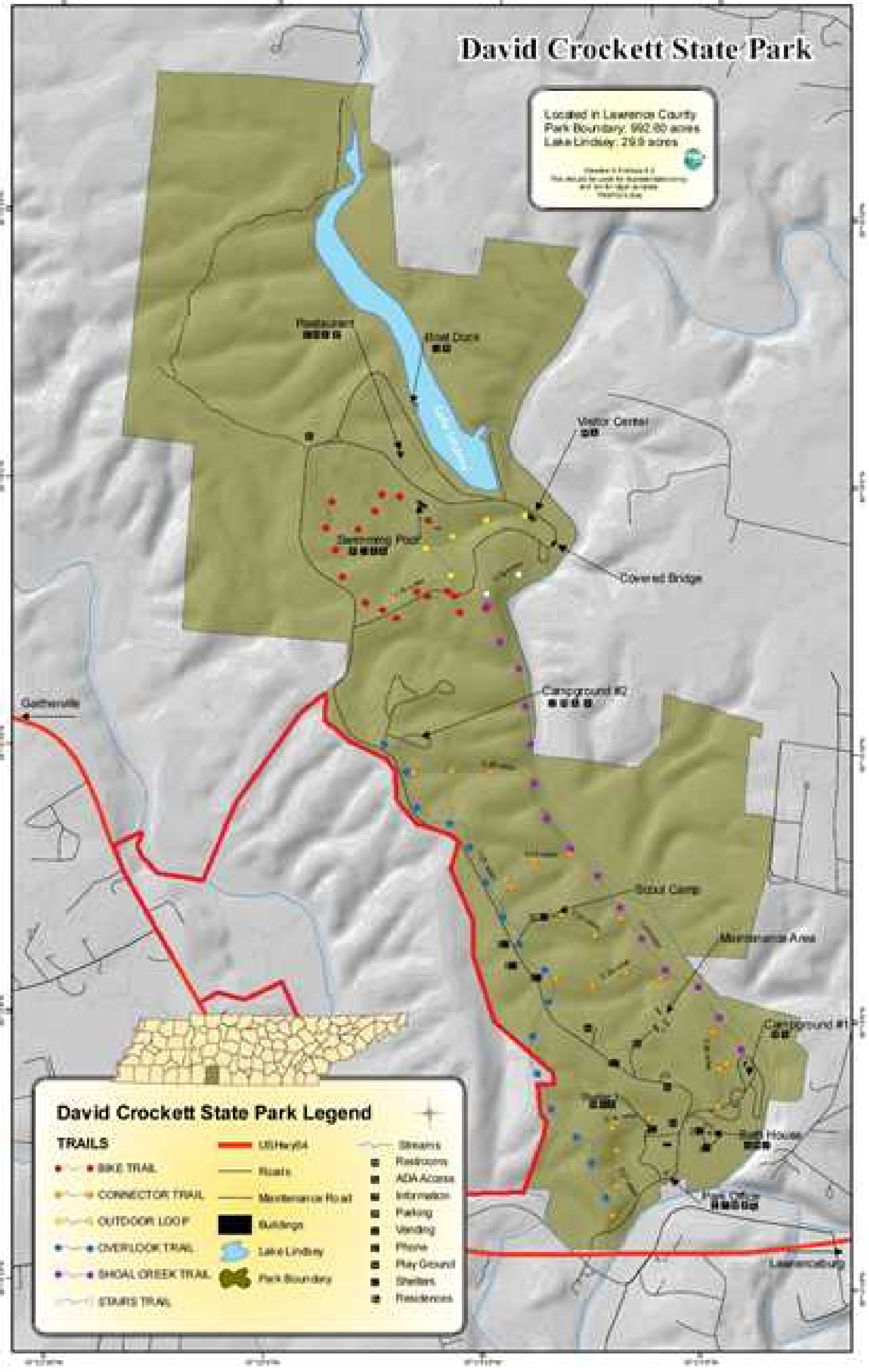
283.00 Acres
Lawrence County
GPS 35.2526 X -87.3706

Mossy Oak Properties Southeast Land & Wildlife
www.selandandwildlife.com

David Crockett State Park

Located in Lawrence County
 Park Boundary: 962.00 acres
 Lake Lindsey: 21.9 acres

Member of a network of
 100+ parks for recreation
 and environmental
 education



David Crockett State Park Legend

- | | | |
|-------------------|------------------|-------------|
| TRAILS | US Hwy 64 | Streams |
| BIKE TRAIL | Roads | Restrooms |
| CONNECTOR TRAIL | Maintenance Road | ADA Access |
| OUTDOOR LOOP | Buildings | Information |
| OVERLOOK TRAIL | Lake Lindsey | Parking |
| SHOAL CREEK TRAIL | Park Boundary | Vending |
| STAIRS TRAIL | | Phone |
| | | Play Ground |
| | | Shelters |
| | | Residrooms |

283.00 Acres
 Lawrence County
 GPS 35.2526 X -87.3706

Mossy Oak Properties Southeast Land & Wildlife
www.selandandwildlife.com