

**Property Details:**

Price : \$132,000

County : Colbert

Acreage : 91.00

Address :

MOPLS ID : 28775

This 91 +/- acre mixed-use recreational, timberland property has a great stand of pine timber and nice creek. Convenient to Shoals area

Maps:

<http://mapright.com/ranching/maps/ed371ce3ac1d51e53ccbab4f7ab58a84/share>

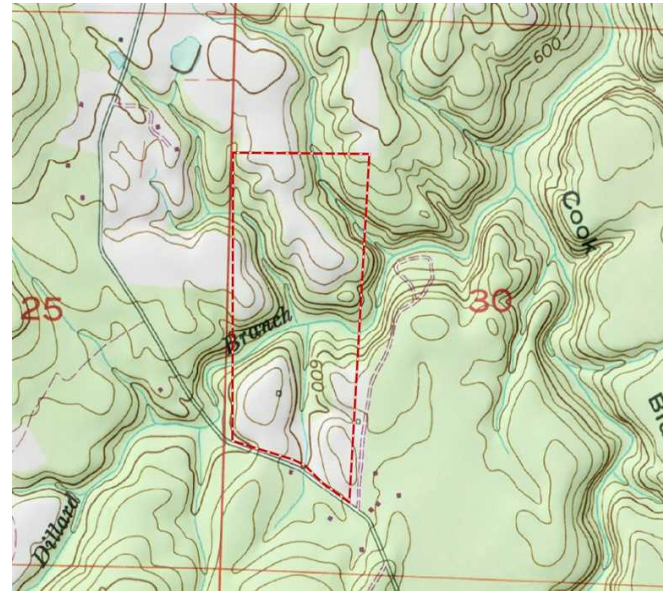
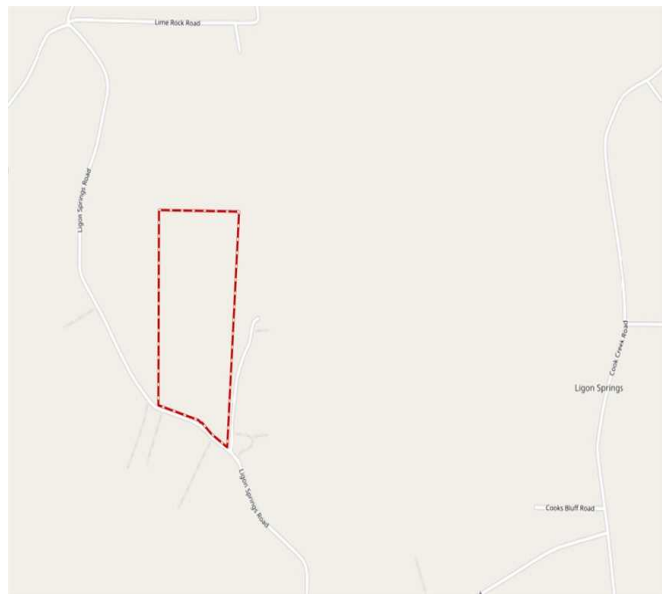
Asking \$132,000

Showing by Appointment Only. For a private showing or additional information, please contact Nathan McCollum at 256-345-0074 or email at [nmccollum@mossyoakproperties.com](mailto:nmccollum@mossyoakproperties.com). We look forward to speaking with you.

91.00 Acres  
Colbert County  
GPS 34.5897 X -87.7389

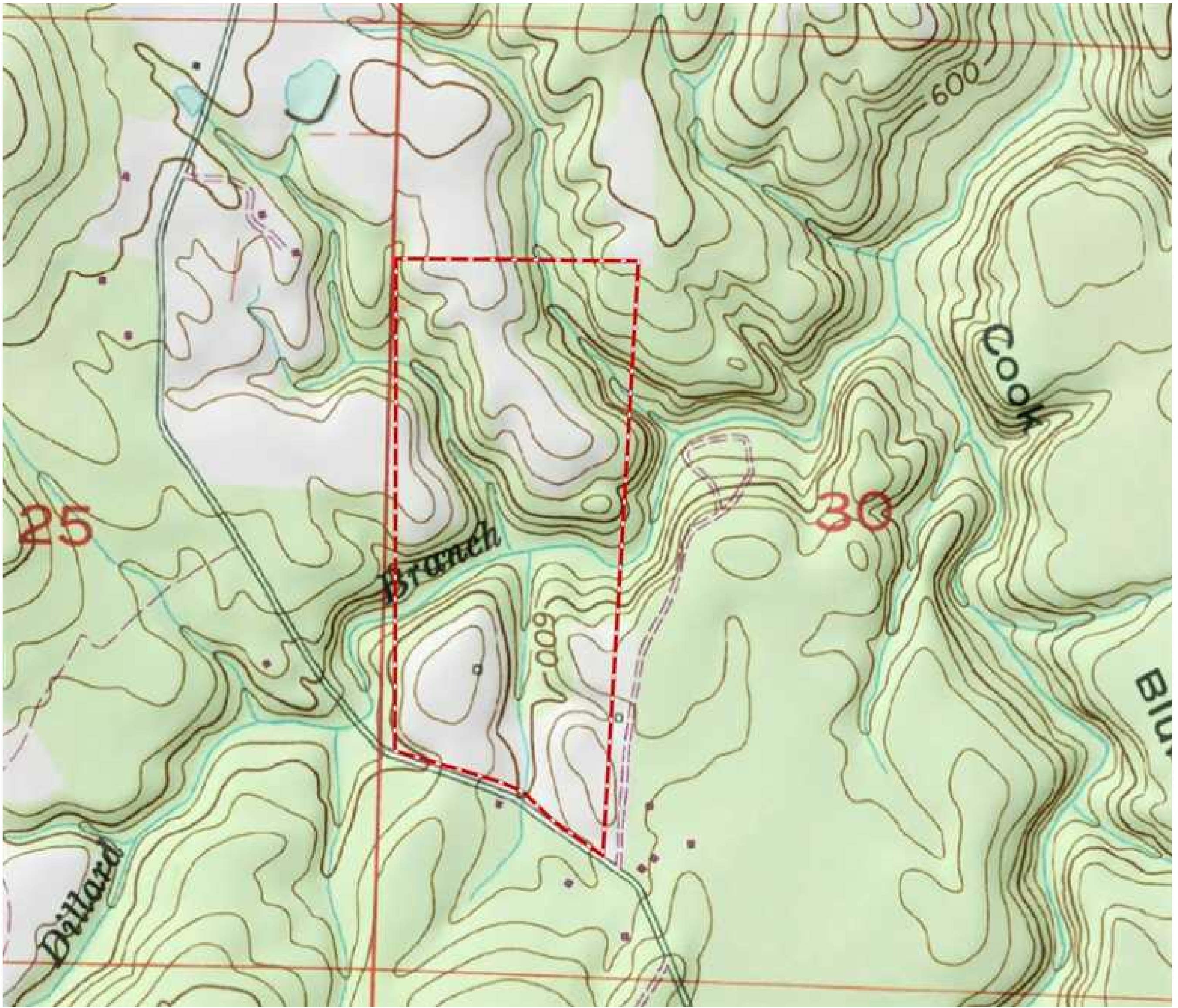
Mossy Oak Properties Southeast Land & Wildlife  
[www.selandandwildlife.com](http://www.selandandwildlife.com)





91.00 Acres  
Colbert County  
GPS 34.5897 X -87.7389

Mossy Oak Properties Southeast Land & Wildlife  
[www.selandandwildlife.com](http://www.selandandwildlife.com)



91.00 Acres  
Colbert County  
GPS 34.5897 X -87.7389

Mossy Oak Properties Southeast Land & Wildlife  
[www.selandandwildlife.com](http://www.selandandwildlife.com)