

**Property Details:**

Price : \$645,600  
County : Lawrence  
Acreage : 269.00  
Address :  
MOPLS ID : 21994

This is a great recreational tract, cattle/horse farm at the confluence of Factory and Chisholm Creek near the quiet country town of West Point, TN. The Blair property is offered for sale in the first time in well over 100 years. The property is predominately fenced pastureland with interspersed areas of hardwood timber. Approximately 70 acres of the farm is mature hardwood timber.

There is over 1/2 mile of frontage along Factory Creek and an additional 1/4 mile along Chisholm Creek. An old farmhouse sits atop the hill just a short walk from the creek overlooking the property.

**Additional Information**

Owner Will divide

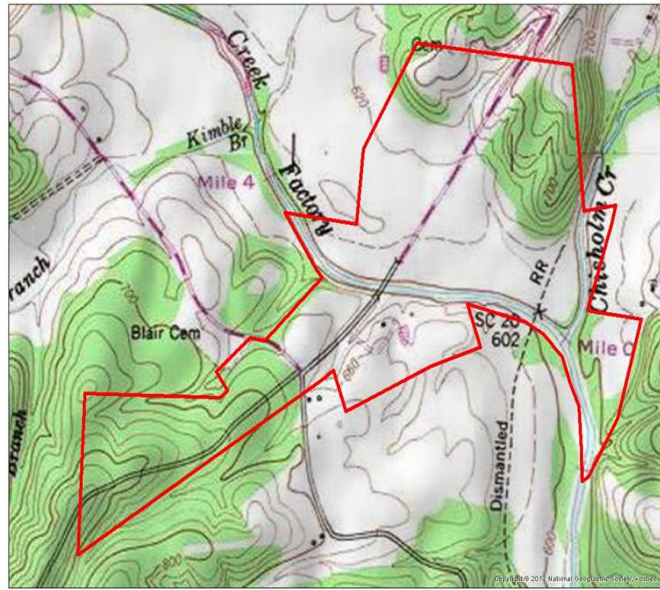
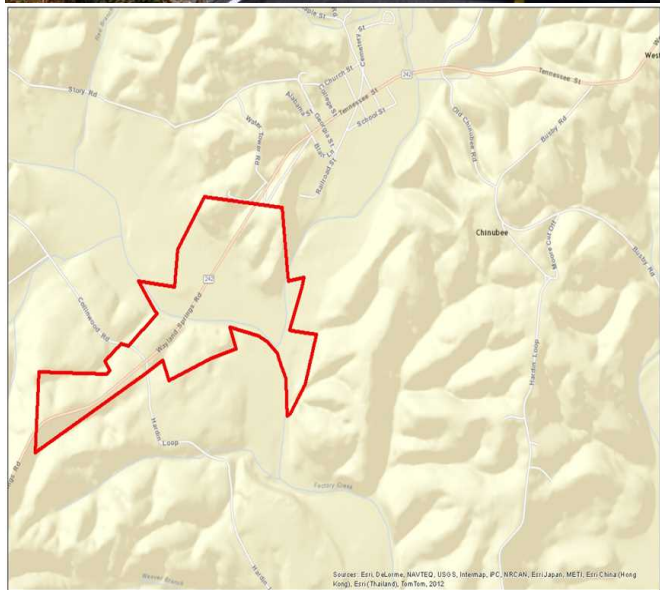
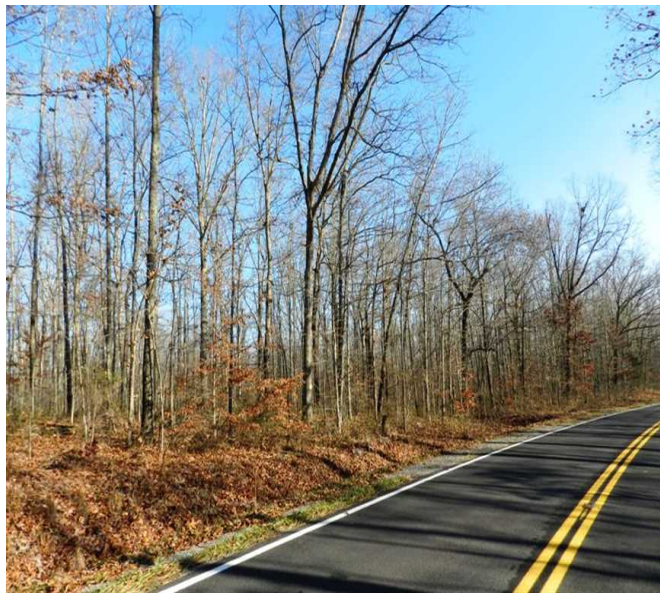
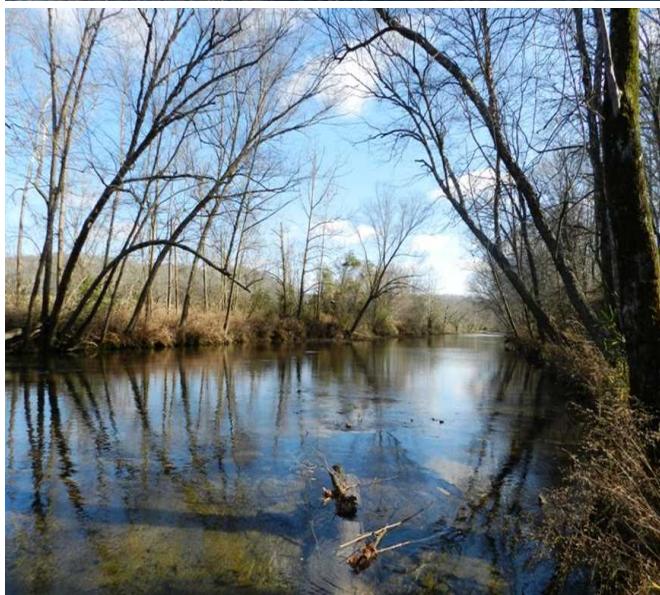
Showing by Appointment Only. For a private showing or additional information, please contact Nathan McCollum at 256-345-0074 or email at nmccollum@mossyoakproperties.com. We look forward to speaking with you.

whitetail deer Lawrence County road frontage freshwater fishing mixed use recreational, farmland, timberland, ranchland

269.00 Acres  
Lawrence County  
GPS 35.1215 X -87.5468

Mossy Oak Properties Southeast Land & Wildlife  
[www.selandandwildlife.com](http://www.selandandwildlife.com)

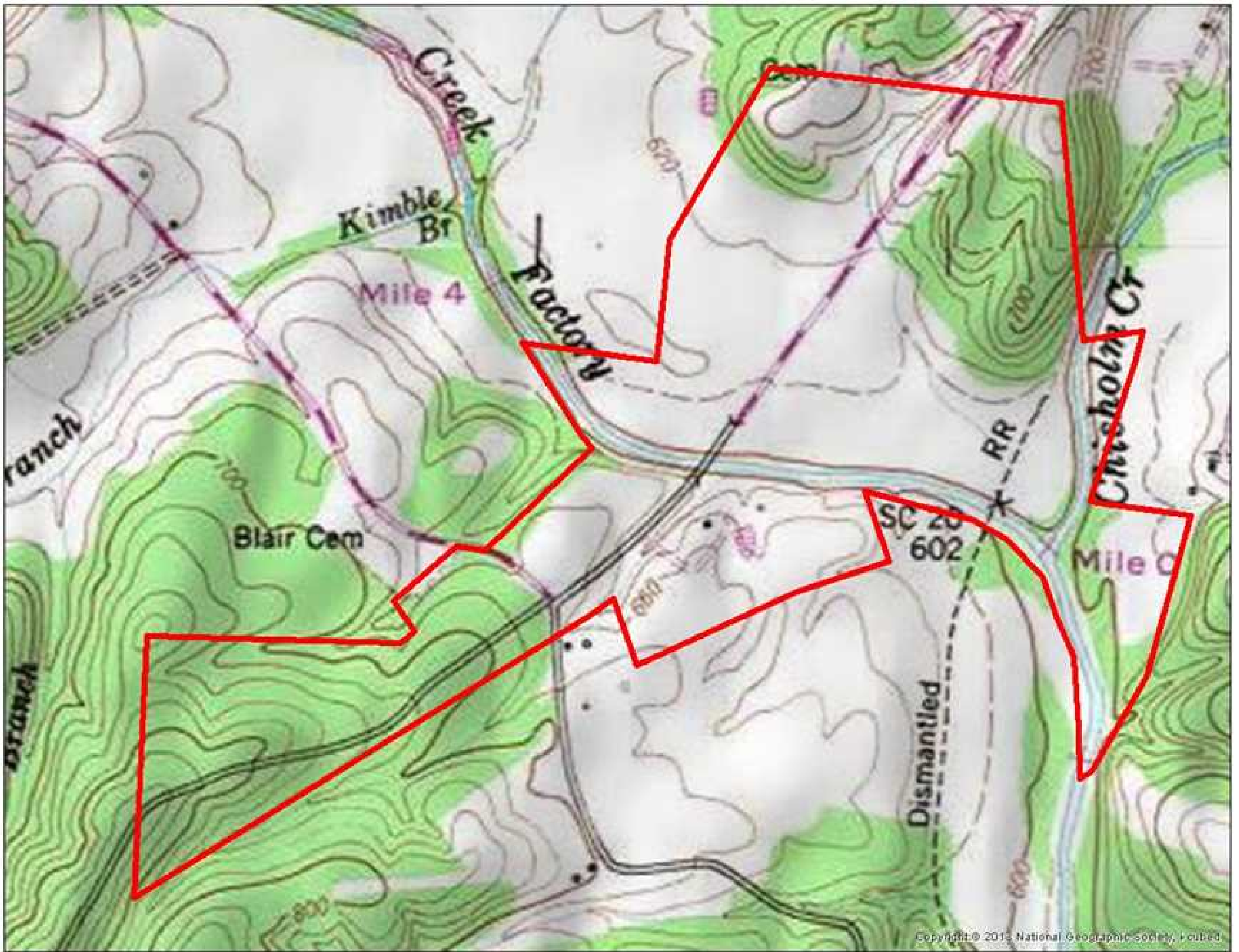




269.00 Acres  
Lawrence County  
GPS 35.1215 X -87.5468

Mossy Oak Properties Southeast Land & Wildlife  
[www.selandandwildlife.com](http://www.selandandwildlife.com)





269.00 Acres  
Lawrence County  
GPS 35.1215 X -87.5468

Mossy Oak Properties Southeast Land & Wildlife  
[www.selandandwildlife.com](http://www.selandandwildlife.com)