

**Property Details:**

Price : \$32,565  
County : Marion  
Acreage : 33.40  
Address :  
MOPLS ID : 30147

+/- 33.4 acres located less than 1 mile from Exit 7 on I-22 and less than 5 minutes to Hamilton, AL. The property has county water and power and approximately 1400 ft of Highway 19 frontage. The land is gently rolling with a small branch feeding into a small pond. Would make for a great building site convenient to town.

Asking \$32,565 or \$975 per acre

Mapright link: <http://mapright.com/ranching/maps/5f659e4a98b7f82f98e9618f1ebda92c/share>

Youtube link:

Showing by Appointment Only.

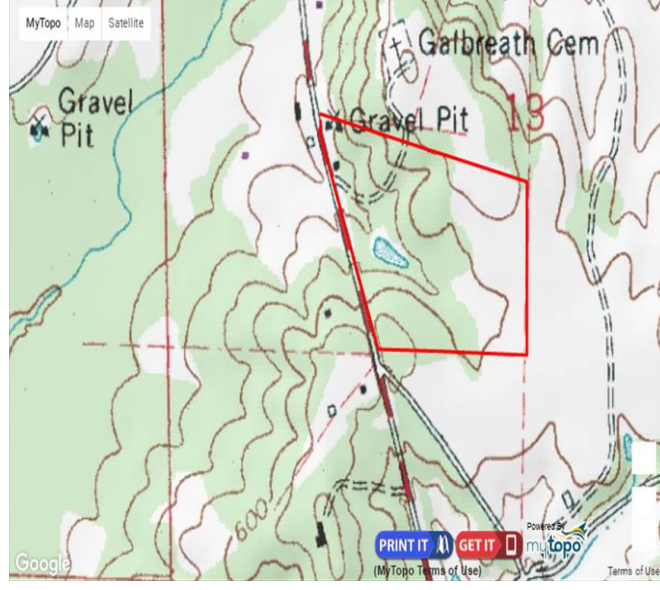
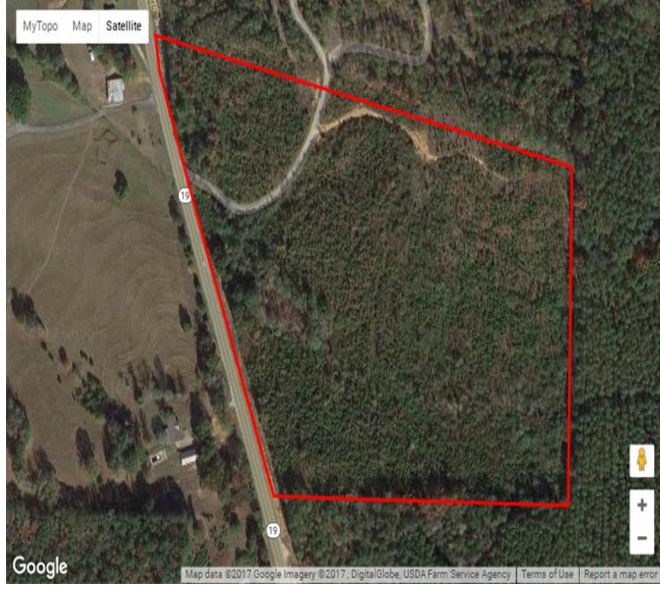
For a private showing or additional information, please contact Nathan McCollum at 256-345-0074 or email at [nmccollum@mossyoakproperties.com](mailto:nmccollum@mossyoakproperties.com).

We look forward to speaking with you.

33.40 Acres  
Marion County  
GPS 34.1908 X -88.0683

Mossy Oak Properties Southeast Land & Wildlife  
[www.selandandwildlife.com](http://www.selandandwildlife.com)

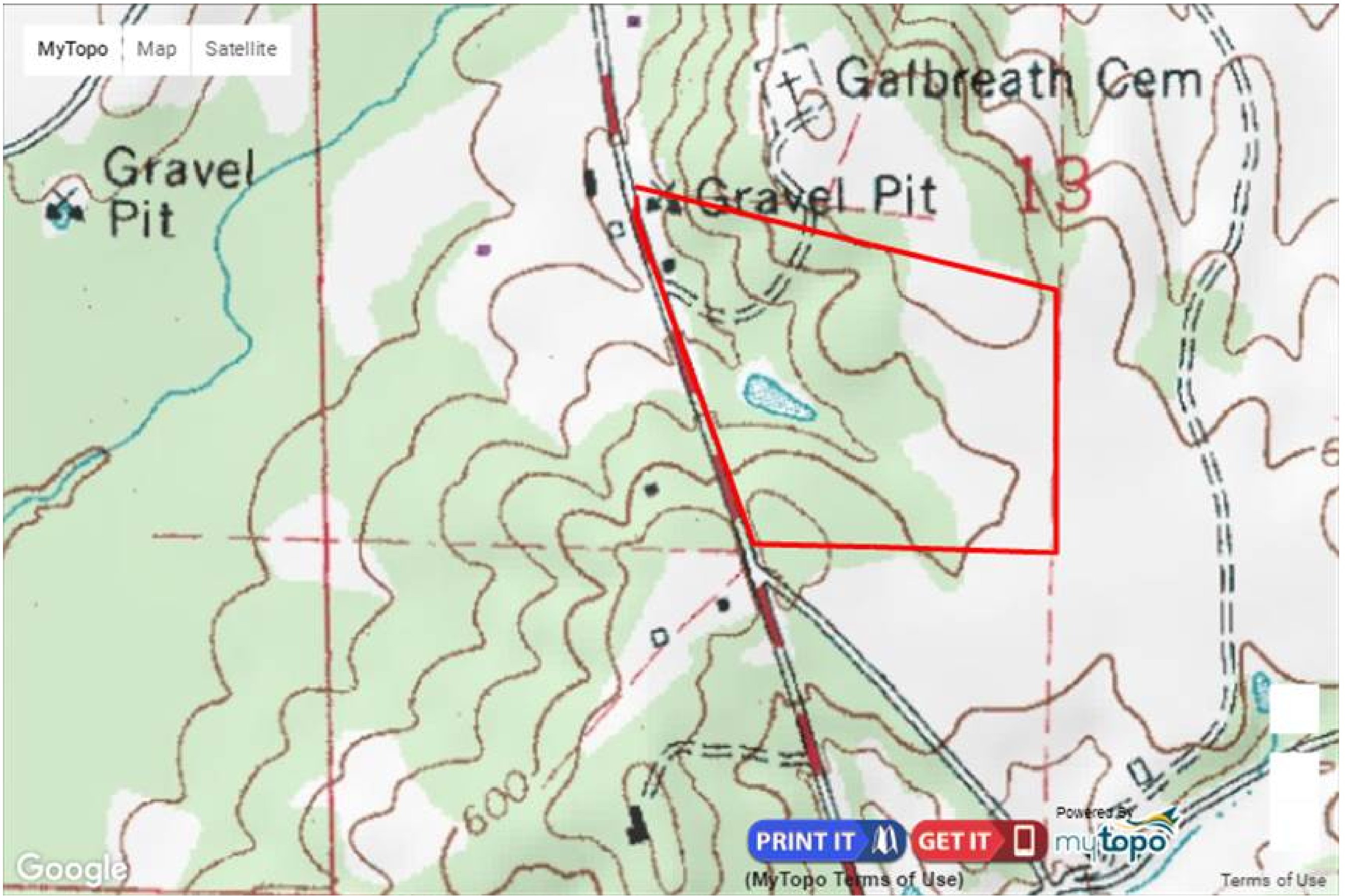




33.40 Acres  
 Marion County  
 GPS 34.1908 X -88.0683

Mossy Oak Properties Southeast Land & Wildlife  
[www.selandandwildlife.com](http://www.selandandwildlife.com)





33.40 Acres  
Marion County  
GPS 34.1908 X -88.0683

Mossy Oak Properties Southeast Land & Wildlife  
[www.selandandwildlife.com](http://www.selandandwildlife.com)