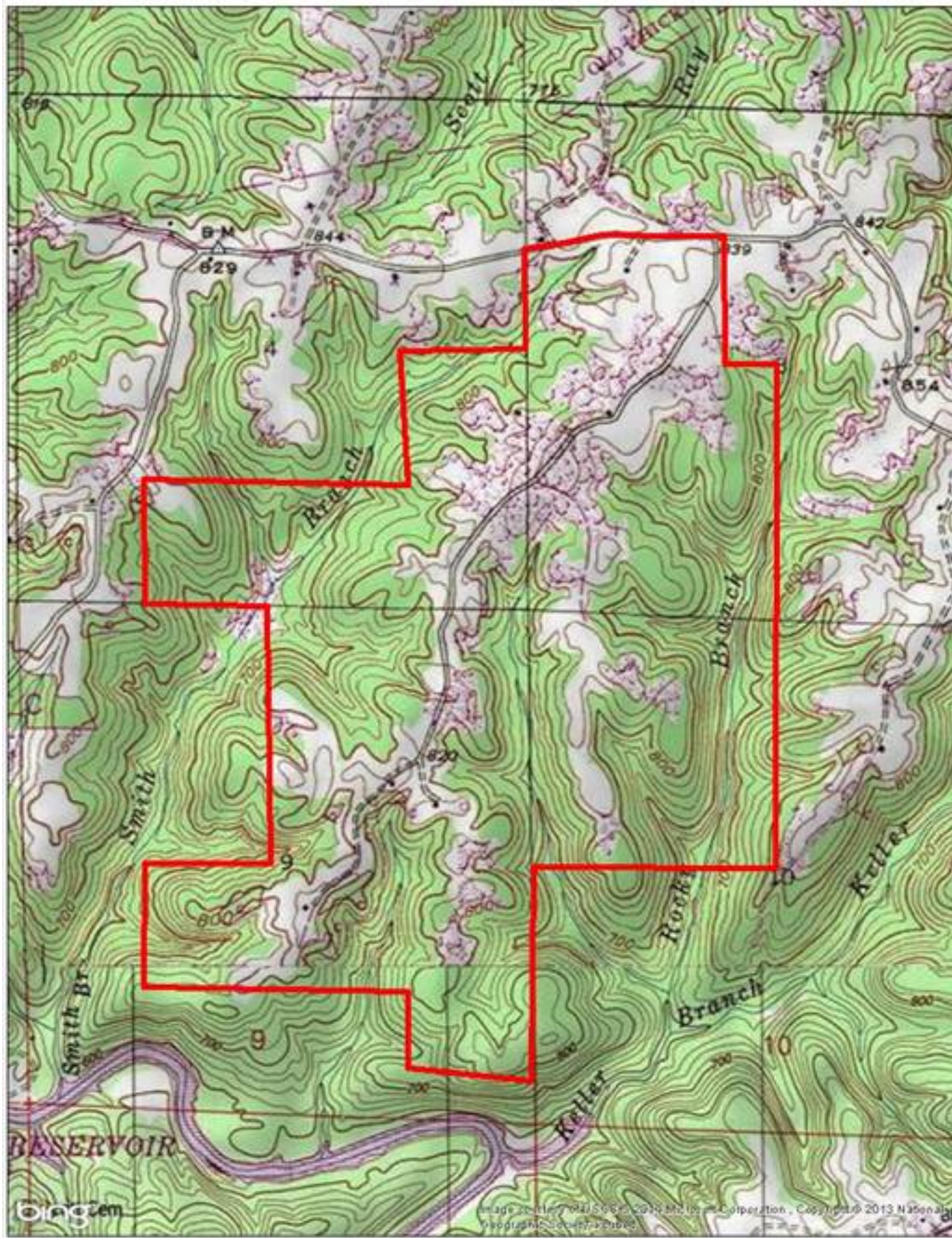


Hardwood Timber with Some Pastureland on Bear Creek



Property Details:

Price : \$1,300,000
County : Franklin
Acreage : 849.00
Address :
MOPLS ID : 19861

Rolling timberland mixed with pastures, ponds, food plots, and creeks, make this a dream property. This 849 acres has a wonderful road system throughout the property. The ridges are sowed in pasture grasses and the slopes have a great stand of hardwood timber. Several small branches flow through the property as well as spring fed ponds. Great diversity for all types of wildlife. Another added bonus is the TVA land just to the south of this property along the scenic Bear Creek. Its like having your own sanctuary for wildlife. There are several beautiful building sites around shade tree oaks. Water and Power are available. This is one of the nicest properties that we have seen in years. It is a must see for the outdoor enthusiast.

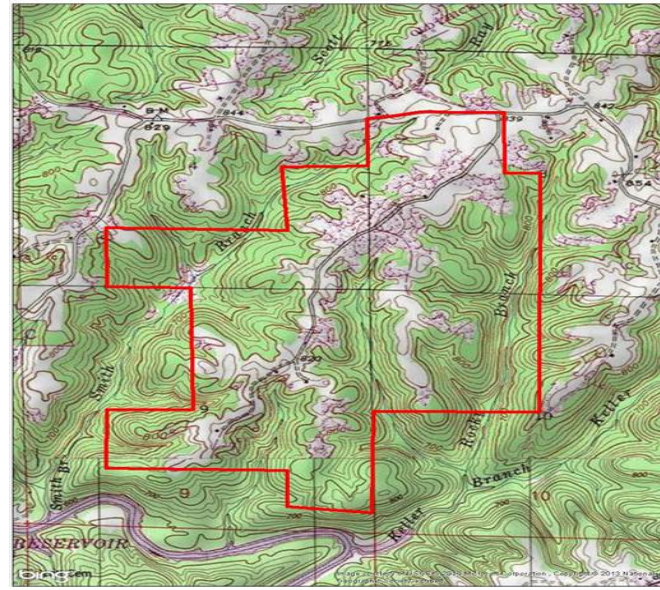
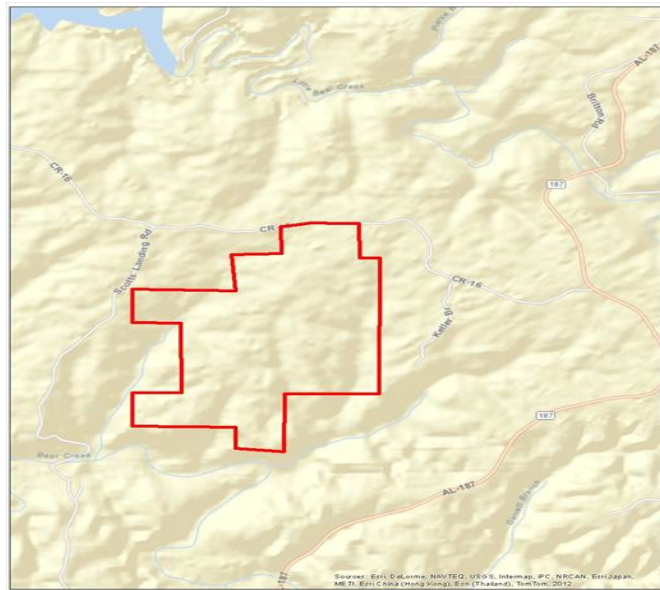
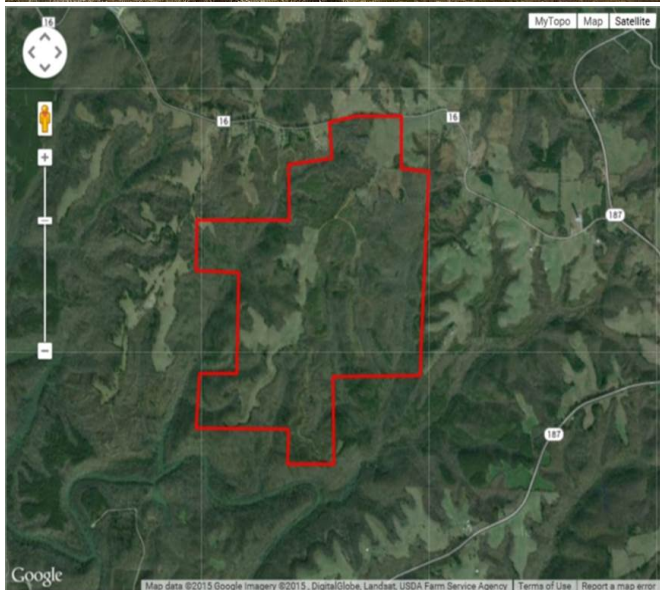
Key features:

- 550 +/- acres of Hardwood Timber
- 160 +/- acres of pastureland
- 40 +/- acres of unimproved pastureland
- 100 +/- acres of 4-5 yr old pine
- Taxes are approximately \$1,540.00 annually

Showing by Appointment Only. For a private showing or additional information, please contact Nathan McCollum at 256-345-0074 or email at nmccollum@mossyoakproperties.com. We look forward to speaking with you. mixed use recreational, farmland, timberland, ranchland, Franklin County, turkey, whitetail deer, public land access, road frontage

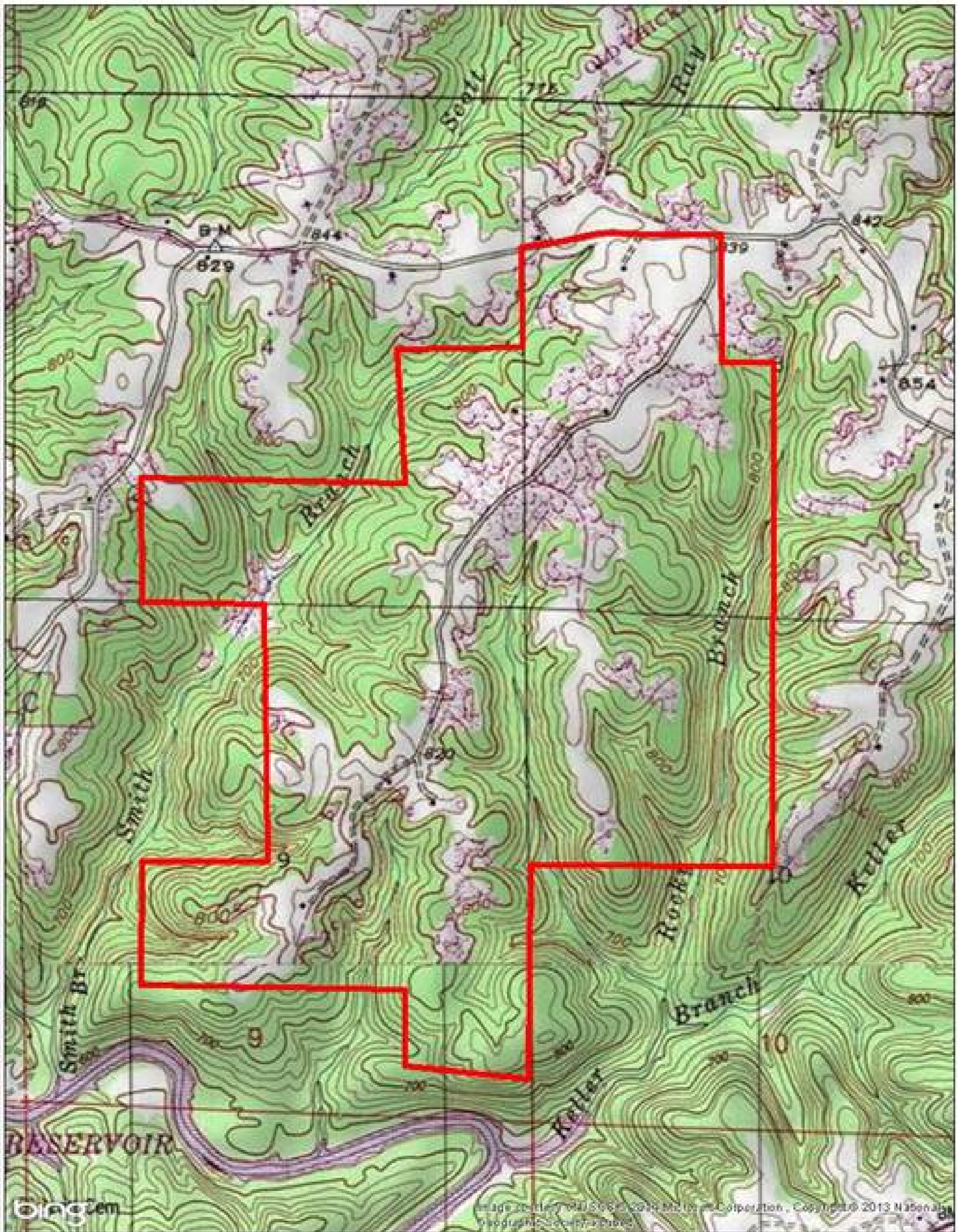
849.00 Acres
Franklin County
GPS 34.3959 X -87.8937

Mossy Oak Properties Southeast Land & Wildlife
www.selandandwildlife.com



849.00 Acres
Franklin County
GPS 34.3959 X -87.8937

Mossy Oak Properties Southeast Land & Wildlife
www.selandandwildlife.com



849.00 Acres
Franklin County
GPS 34.3959 X -87.8937

Mossy Oak Properties Southeast Land & Wildlife
www.selandandwildlife.com