

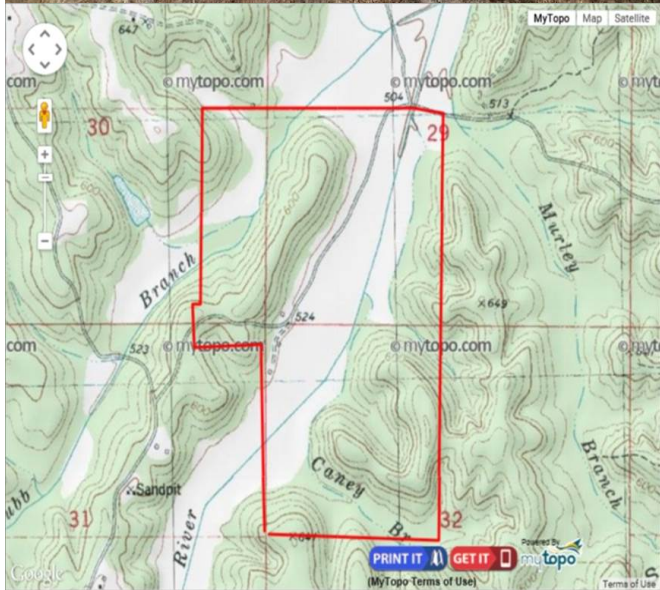
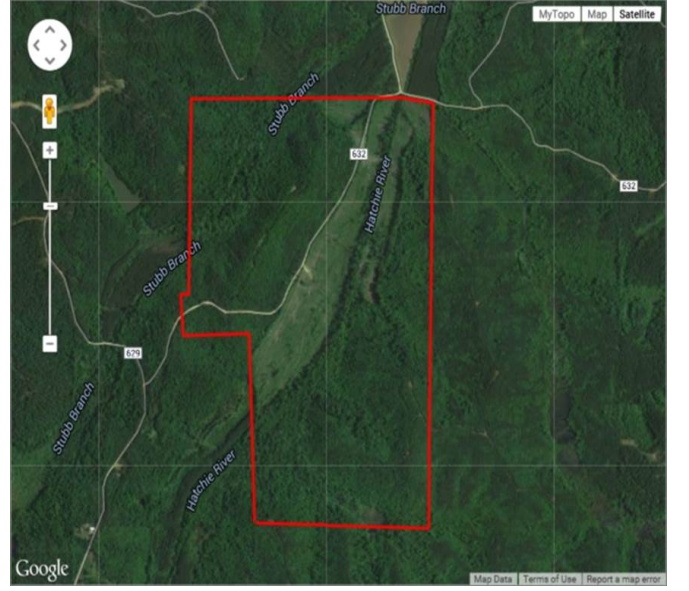
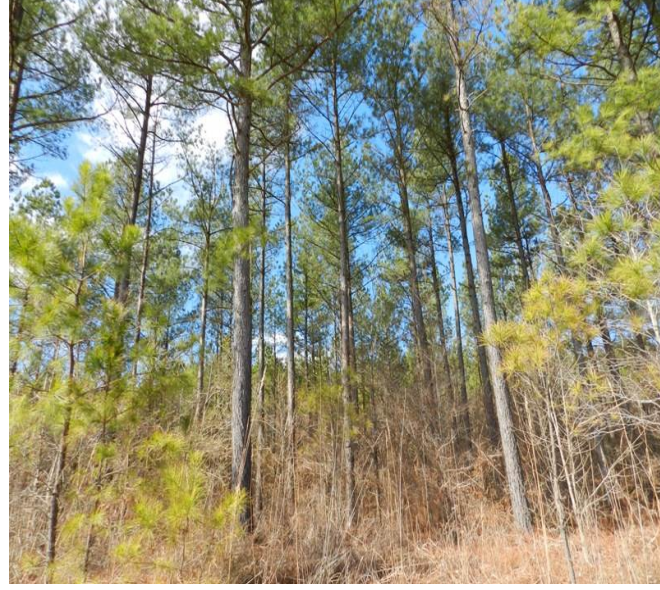
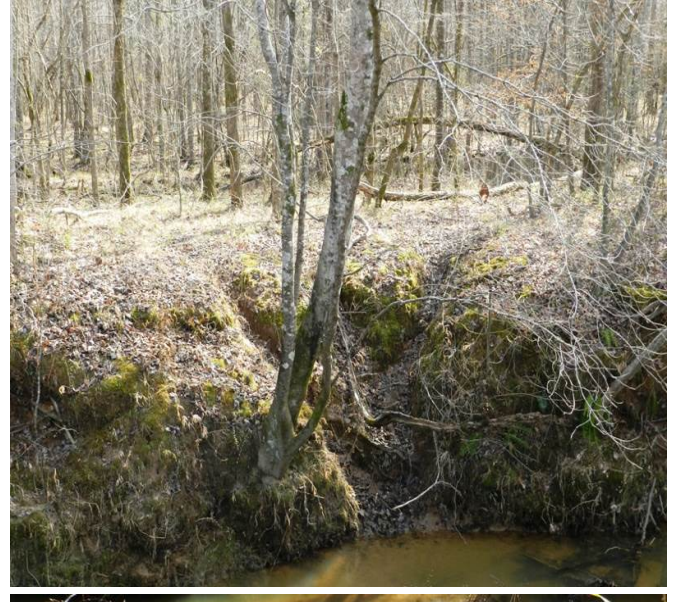
Property Details:

Price : \$374,800
 County : Tippah
 Acreage : 400.00
 Address :
 MOPLS ID : 19566

This property has very good access along a county road for over 1/2 mile with access to the Hatchie River. The diversified timber stands provide a structured income and something for wildlife at all points in the year, Not to mention a great price of less than \$1,000/acre. All offers will be considered! Other Important Information: 75± acres of newly planted (2015) pine seedlings 70± acres of Hardwood Timber 255± acres of 14-17 yr mixed pine/hardwood Showing by Appointment Only. For a private showing or additional information, please contact Nathan McCollum at 256-345-0074 or email at nmccollum@mossyoakproperties.com. We look forward to speaking with you. 400 acre property Dumas, MS whitetail deer creek road frontage

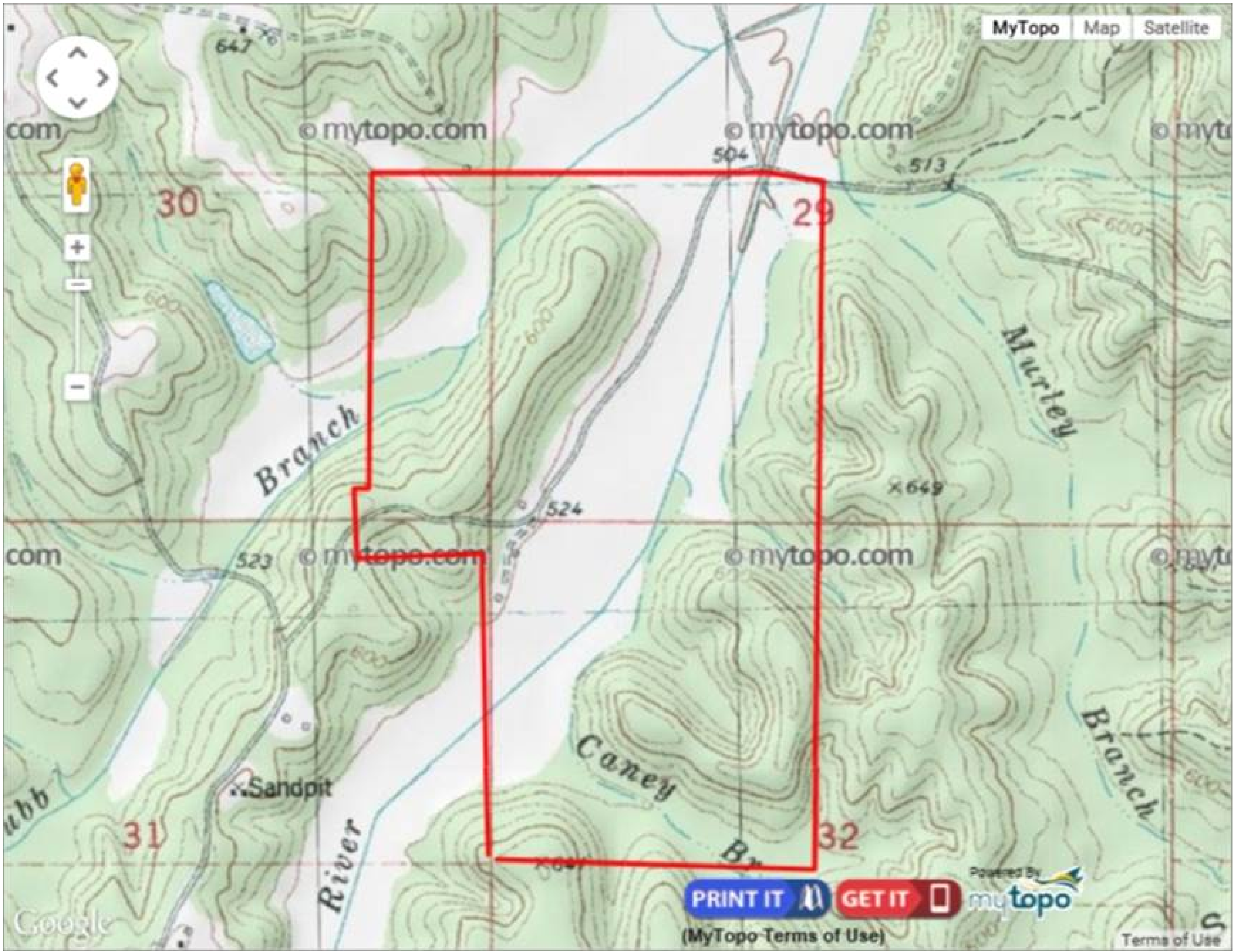
400.00 Acres
 Tippah County
 GPS 34.6187 X -88.7992

Mossy Oak Properties Southeast Land & Wildlife
www.selandandwildlife.com



400.00 Acres
Tippah County
GPS 34.6187 X -88.7992

Mossy Oak Properties Southeast Land & Wildlife
www.selandandwildlife.com



400.00 Acres
Tippah County
GPS 34.6187 X -88.7992

Mossy Oak Properties Southeast Land & Wildlife
www.selandandwildlife.com