

**Property Details:**

Price : \$1  
County : Lawrence  
Acreage : 23.60  
Address :  
MOPLS ID : 33486

TRACT 2

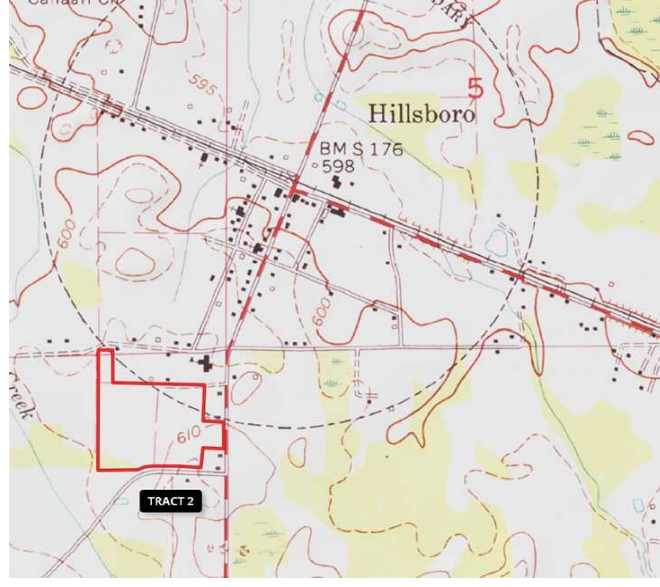
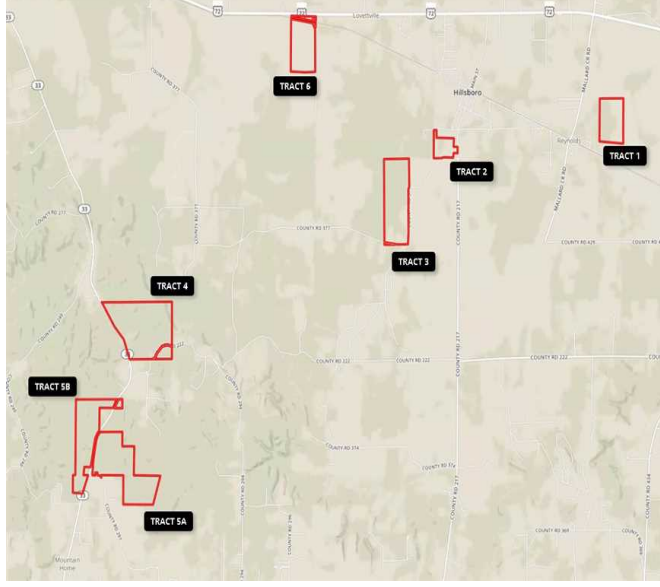
+/-23.6 Acres located in Hillsboro, AL

The property will be sold by SEALED BID on OCTOBER 3, 2017

For additional information, see the attached Bid Package document or call Elton Coley at 256-366-0575 or email [ercoley@bellsouth.net](mailto:ercoley@bellsouth.net)

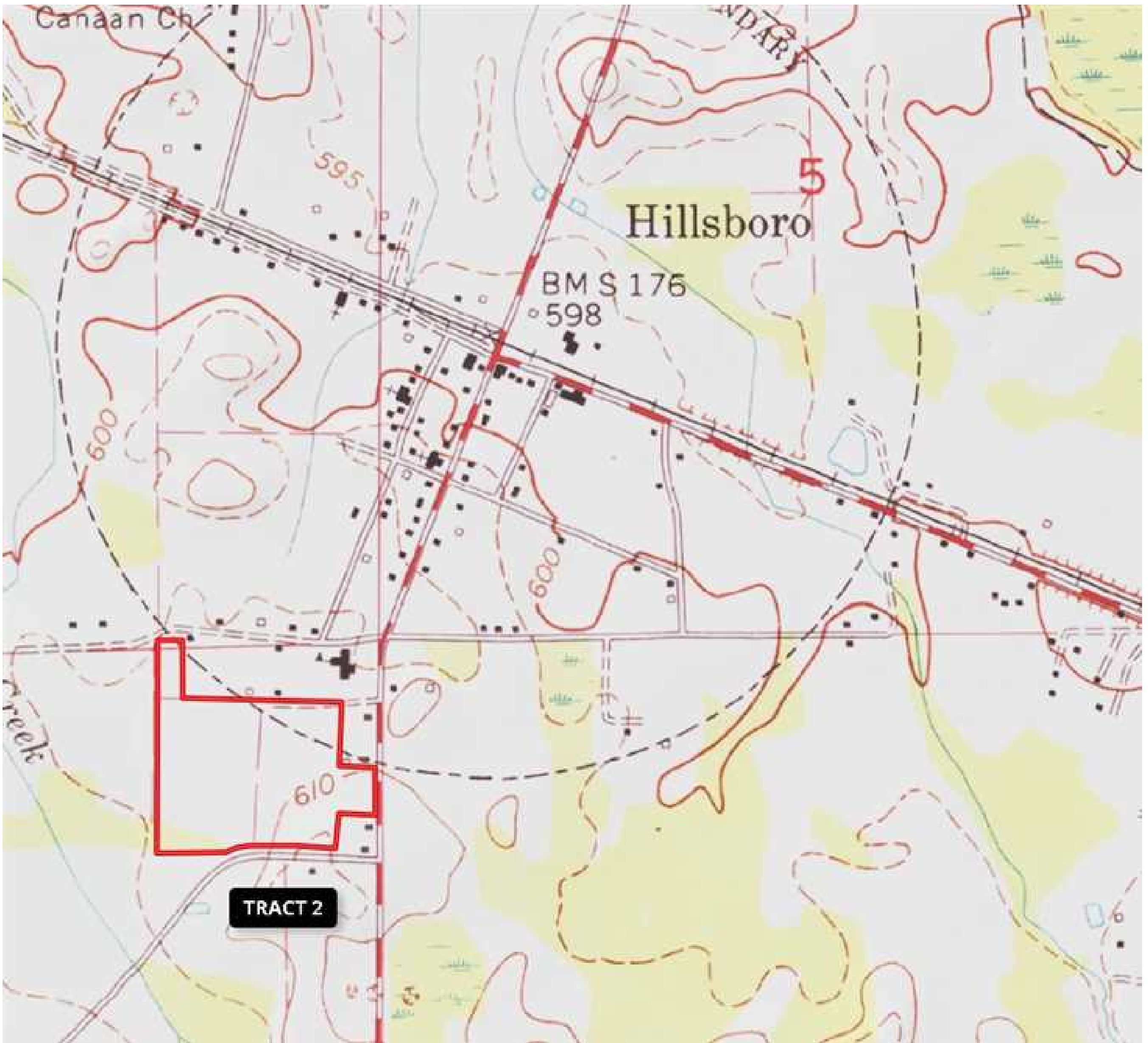
23.60 Acres  
Lawrence County  
GPS 34.6323 X -87.1953

Mossy Oak Properties Southeast Land & Wildlife  
[www.selandandwildlife.com](http://www.selandandwildlife.com)



23.60 Acres  
Lawrence County  
GPS 34.6323 X -87.1953

Mossy Oak Properties Southeast Land & Wildlife  
[www.selandandwildlife.com](http://www.selandandwildlife.com)



23.60 Acres  
Lawrence County  
GPS 34.6323 X -87.1953

Mossy Oak Properties Southeast Land & Wildlife  
[www.selandandwildlife.com](http://www.selandandwildlife.com)