

## JUST LISTED 200 Acres of Excellent Hunting Land for Sale Lamar County, Alabama - Big Bucks!



### Property Details:

Price : \$219,000

County : Lamar

Acreage : 200.00

Address : Blue Bird Road

MOPLS ID : 50851

This 200 acre tract is located just outside of Sulligent, in Lamar County, Alabama. Access to the tract is via a 40 ft. deeded access from Blue Bird road. This property has plenty of good hardwood timber, lots of wildlife and well-maintained roads. Slickum Branch runs throughout the entire length of the property. Whitetail deer and turkey already frequent the many existing food plots which are consistent for producing lots of big deer as evidenced in the photos. The privacy, timber, branch, wildlife, many green fields, and good neighbors make this a great spot for you to build a house and hunt your own property.

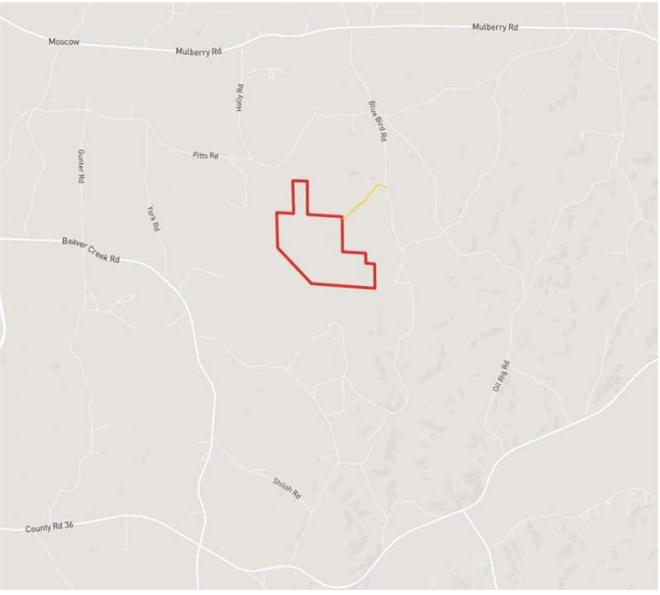
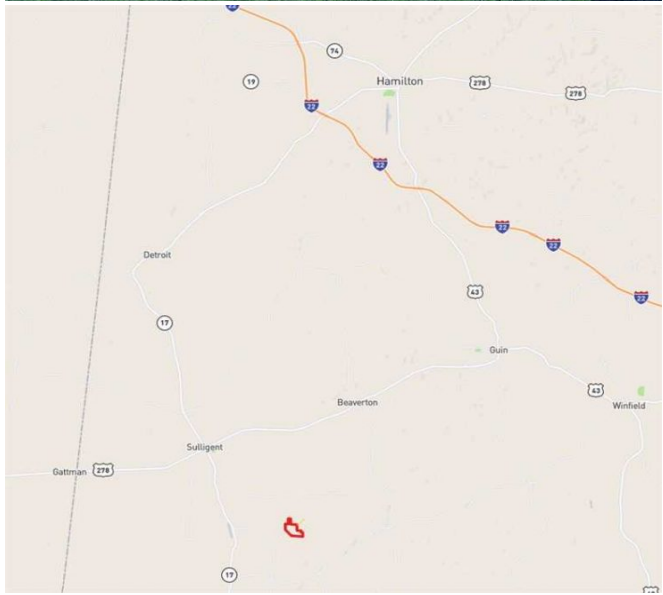
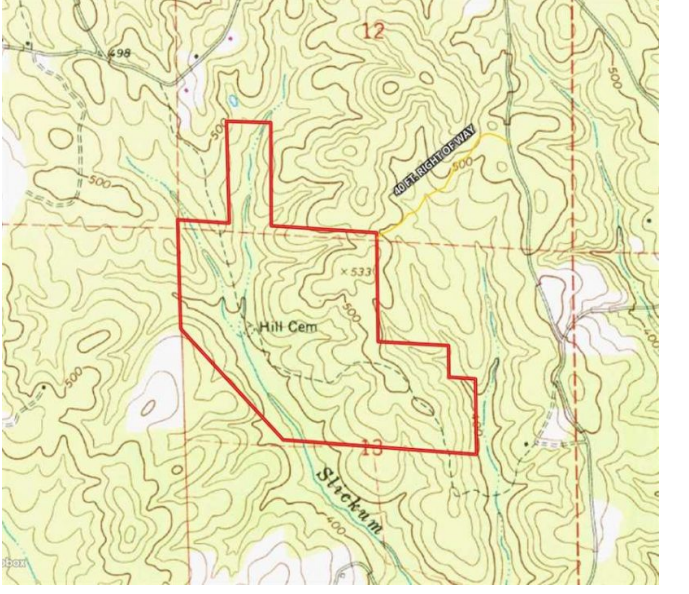
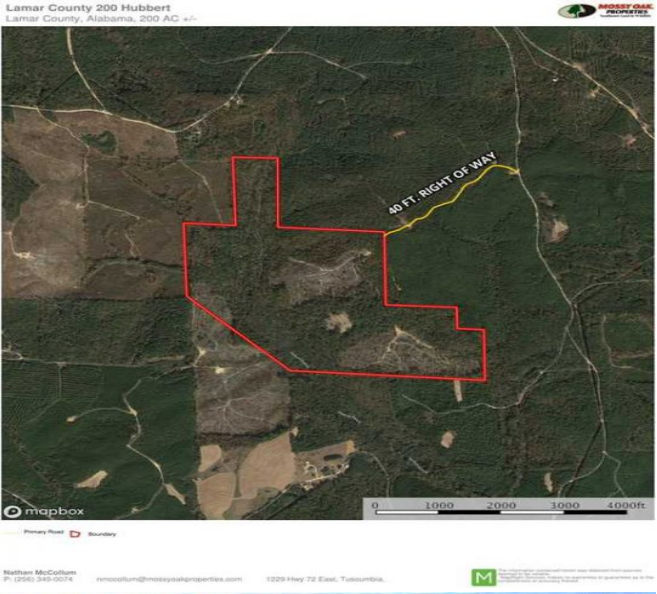
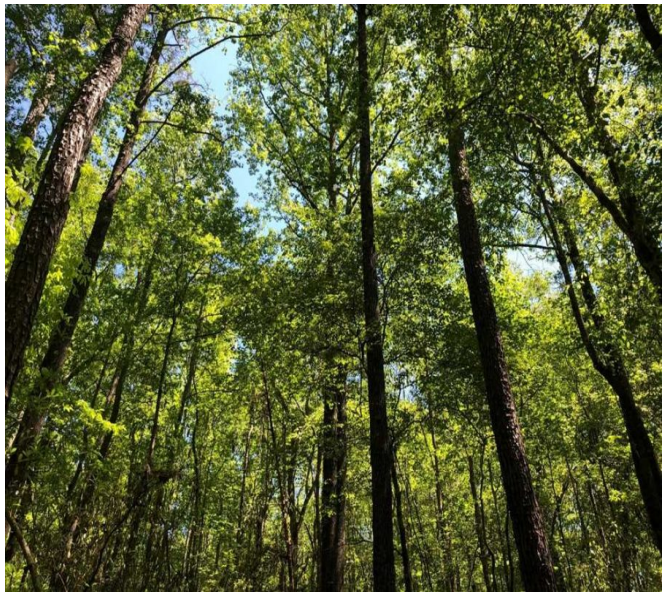
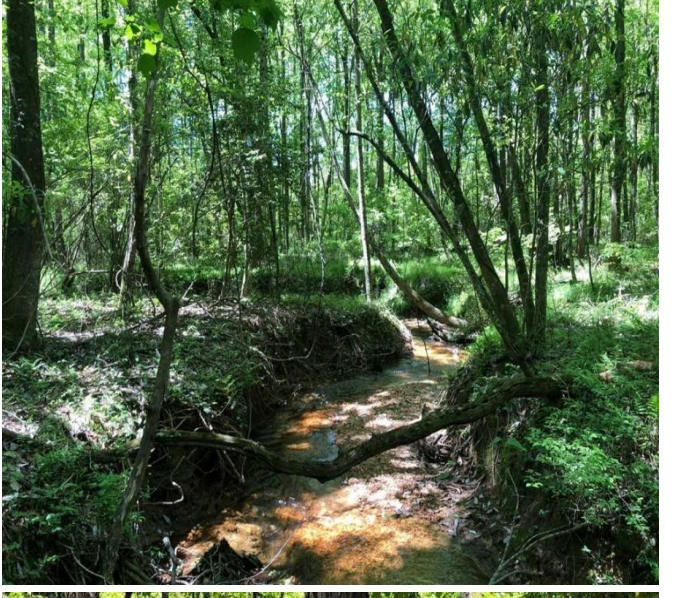
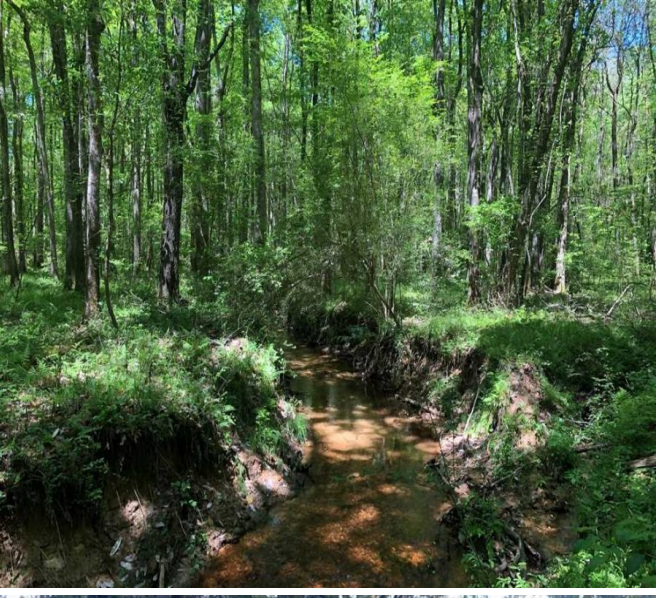
Mossy Oak Properties Southeast Land & Wildlife, LLC has a unique team of professionals with 70 years of combined experience in land brokerage and timber management. By investing in our clients and their properties, we are not just selling property, we are building lifelong friendships. Let us help you "Find Your Favorite Place."

Call Nathan McCollum at (256) 345-0074 or email [nmccollum@mossyoakproperties.com](mailto:nmccollum@mossyoakproperties.com).

200.00 Acres  
Lamar County  
GPS 33.8458 X -88.0720

Mossy Oak Properties Southeast Land & Wildlife  
[www.selandandwildlife.com](http://www.selandandwildlife.com)





200.00 Acres  
Lamar County  
GPS 33.8458 X -88.0720

Mossy Oak Properties Southeast Land & Wildlife  
[www.selandandwildlife.com](http://www.selandandwildlife.com)





200.00 Acres  
Lamar County  
GPS 33.8458 X -88.0720

Mossy Oak Properties Southeast Land & Wildlife  
[www.selandandwildlife.com](http://www.selandandwildlife.com)