



Property Details:

Price : \$149,900
County : Lawrence
Acreage : 44.65
Address :
MOPLS ID : 21802

44.65 acres located less than 1 mile from Lawrenceburg's town square offers frontage along Shoals Creek. The property is located less than 100 yards off Highway 43 and has access via 2 paved roads.

This is a great location for the best of both worlds (city limits and the country feel) and an excellent opportunity for residential development or a small farm right in town. You can literally walk to work!

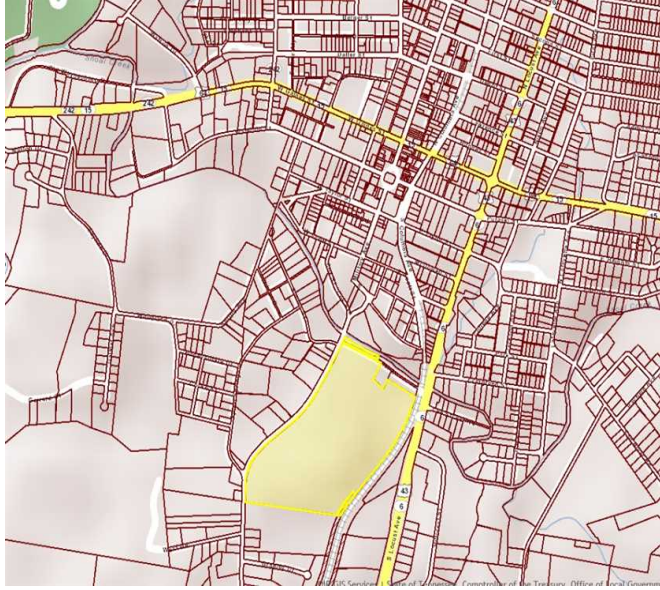
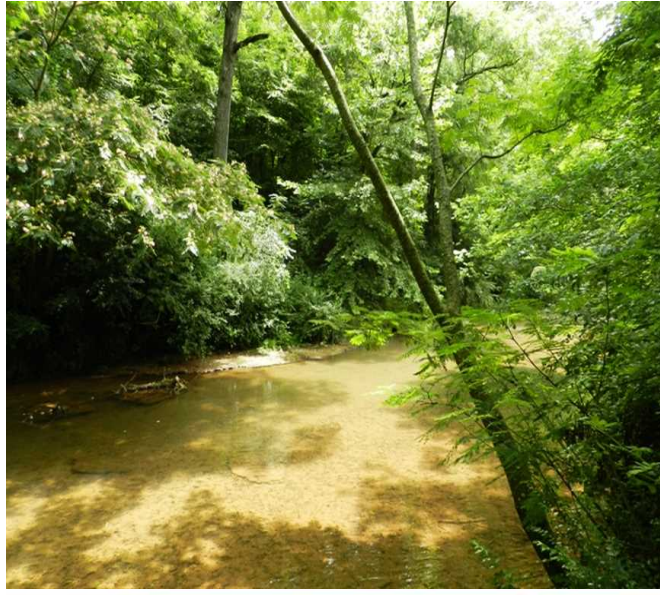
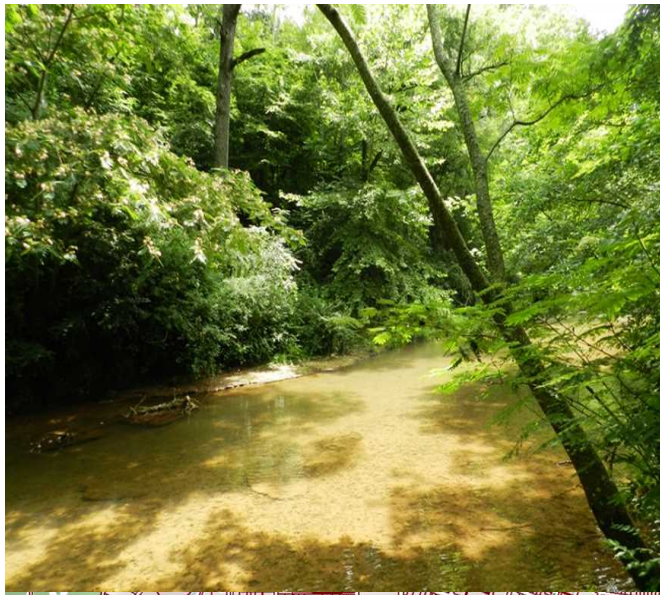
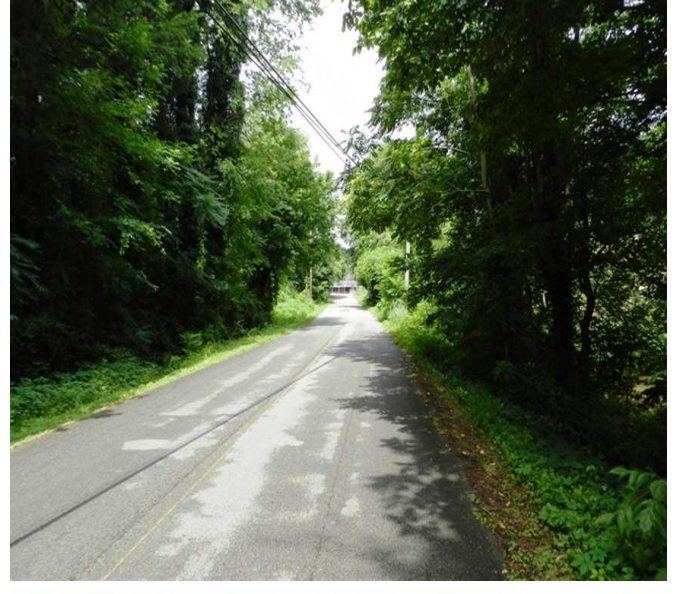
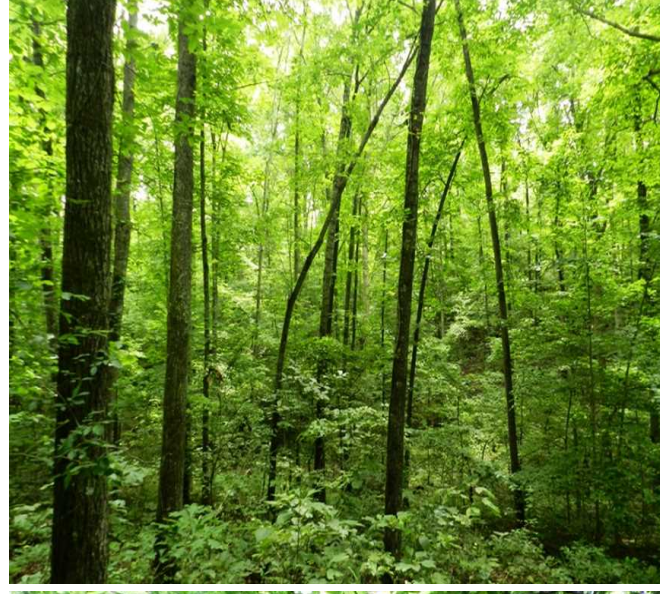
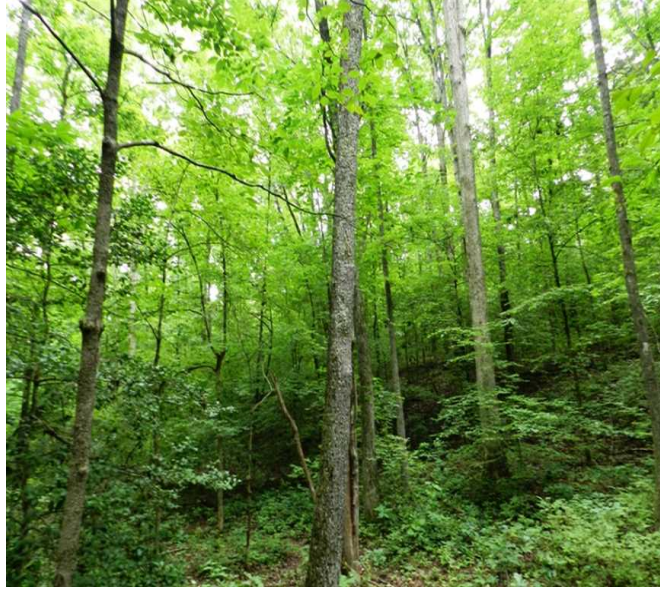
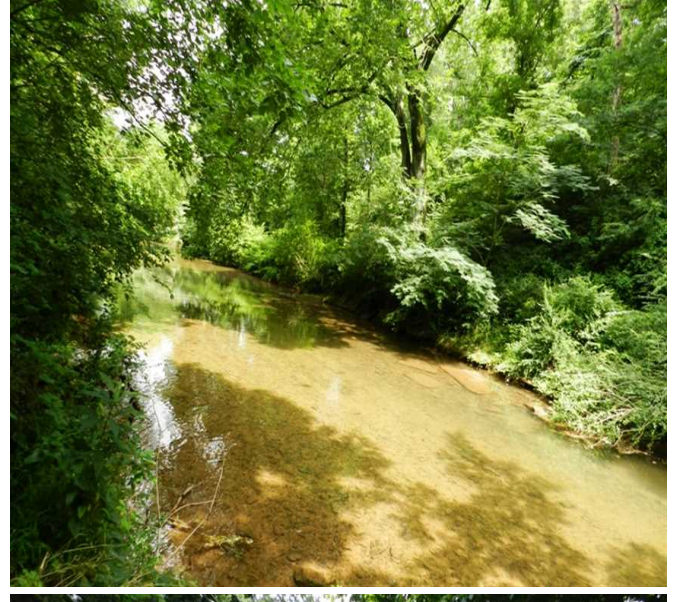
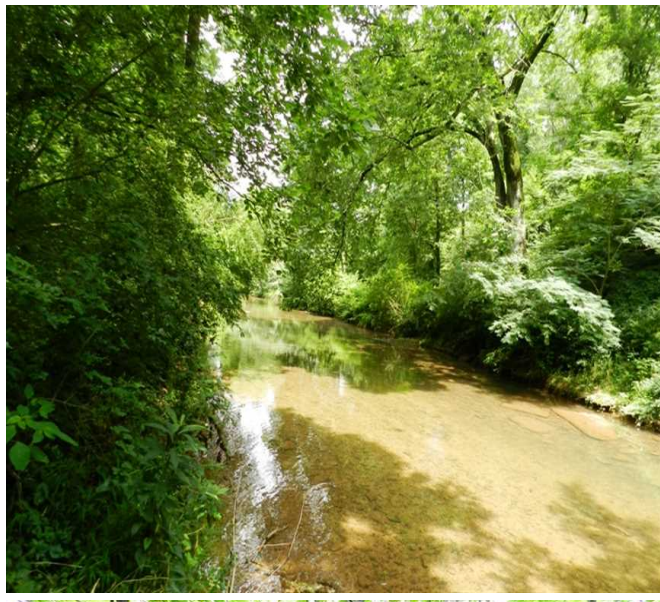
The hardwood timber has significant timber value.

Owner will divide under the right circumstances.

Showing by Appointment Only. For a private showing or additional information, please contact Nathan McCollum at 256-345-0074 or email at nmccollum@mossyoakproperties.com. We look forward to speaking with you.

44.65 Acres
Lawrence County
GPS 35.2353 X -87.3370

Mossy Oak Properties Southeast Land & Wildlife
www.selandandwildlife.com



44.65 Acres
 Lawrence County
 GPS 35.2353 X -87.3370

Mossy Oak Properties Southeast Land & Wildlife
www.selandandwildlife.com



44.65 Acres
Lawrence County
GPS 35.2353 X -87.3370

Mossy Oak Properties Southeast Land & Wildlife
www.selandandwildlife.com