

Row Crop and Pastureland in Franklin County



Property Details:

Price : \$498,750

County : Franklin

Acreage : 250.00

Address : Phil Campbell, AL

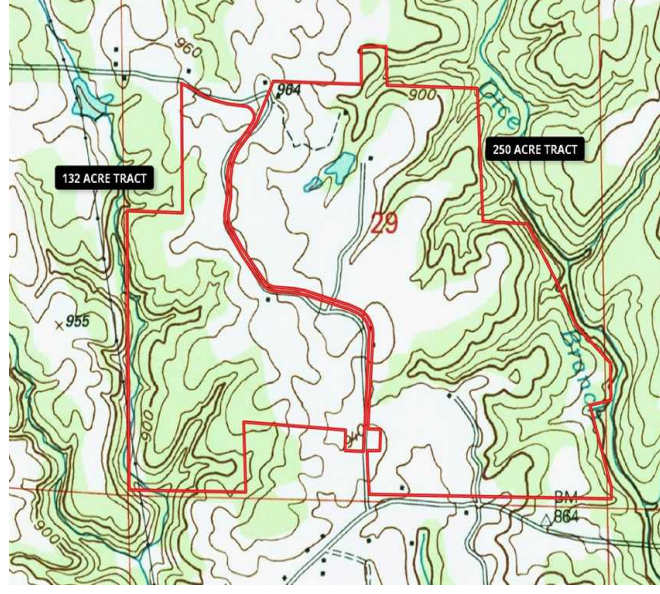
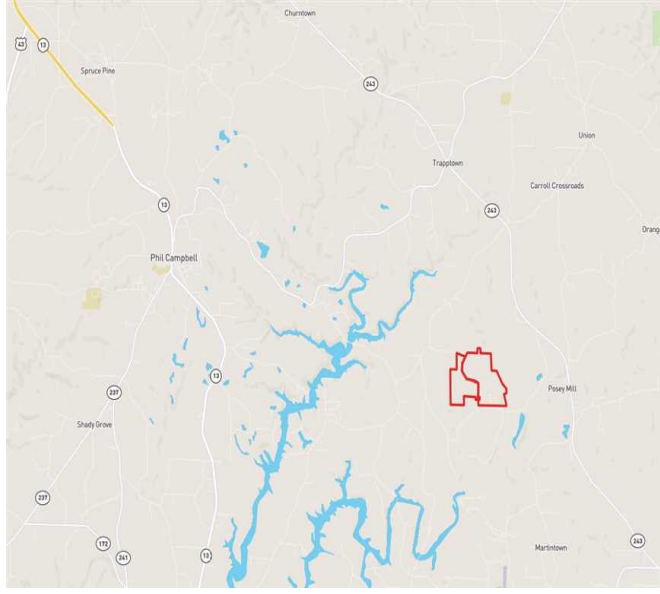
MOPLS ID : 41691

This property has good topography and a mixture of land types, including 49 acres of pine and hardwood timber. 196 acres of fenced and cross fenced pasture/row crop, three ponds and a creek offer enticements for this end of the road setting. On this tract you will enjoy the peaceful, country life, plus amazing wildlife. Property joins Bear Creek Development Authority (BCDA) land. Utilities are available.

For more information or to schedule an appointment to view the property, call Nathan McCollum at (256) 345-0074 or email nmccollum@mossyoakproperties.com. We also have other tracts that are not yet on-line that might fit what you are looking for. Give us a call and we'll help you find something that meets your needs!

250.00 Acres
Franklin County
GPS 34.3217 X -87.6058

Mossy Oak Properties Southeast Land & Wildlife
www.selandandwildlife.com



250.00 Acres
Franklin County
GPS 34.3217 X -87.6058

Mossy Oak Properties Southeast Land & Wildlife
www.selandandwildlife.com



250.00 Acres
Franklin County
GPS 34.3217 X -87.6058

Mossy Oak Properties Southeast Land & Wildlife
www.selandandwildlife.com